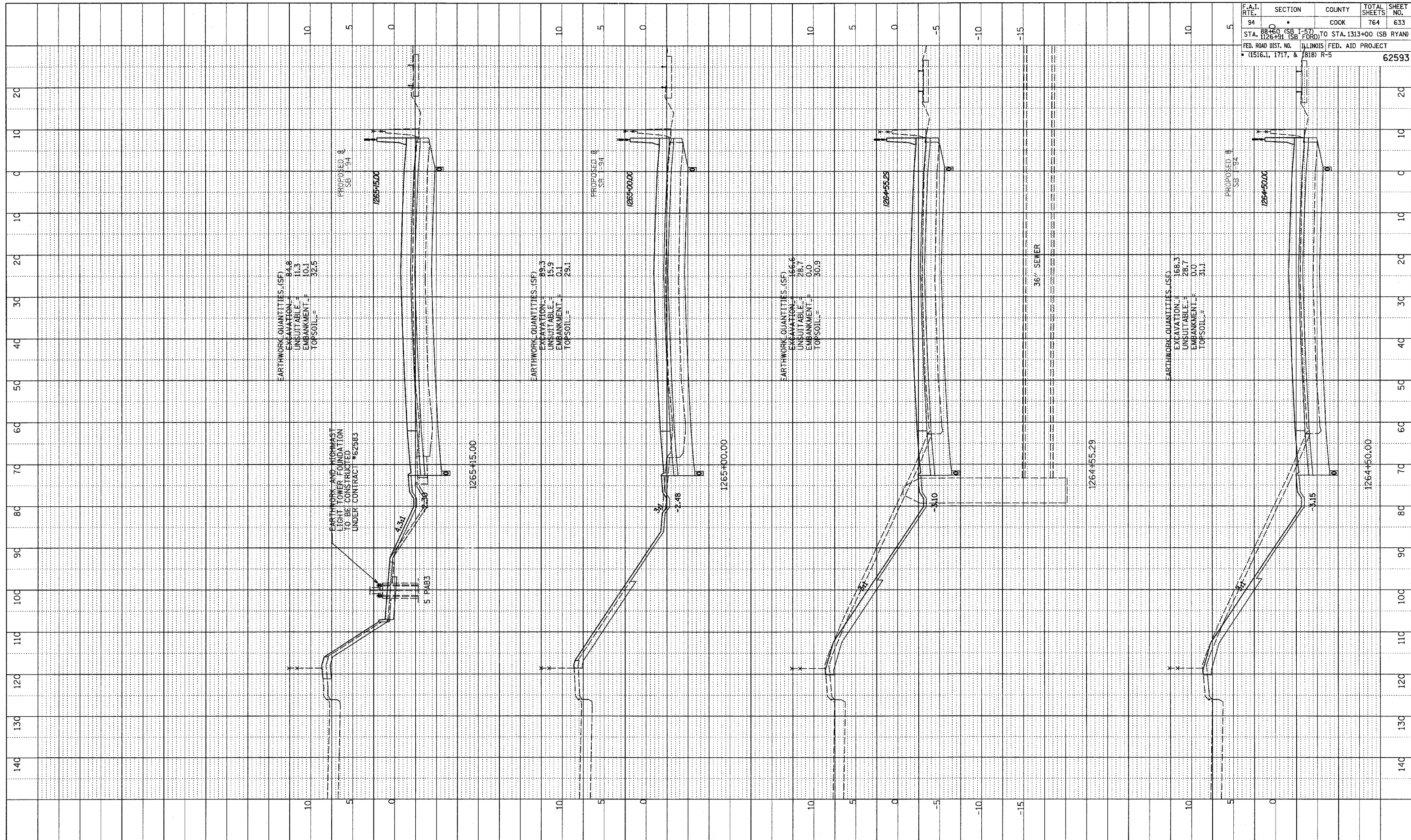
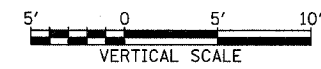


PROFILE SURVEYED  
 PLOTTED AS SHOWN  
 NOTE BOOK NO. \_\_\_\_\_  
 NO. \_\_\_\_\_  
 STRUCTURE NOTATIONS CHFD



F.A.I. RTE.	SECTION	COUNTY	TOTAL SHEETS	SHEET NO.
94	D	COOK	764	633
STA. 1126+00 (SB I-57) TO STA. 1313+00 (SB RYAN)				
FED. ROAD DIST. NO. ILLINOIS FED. AID PROJECT				
• (1516.1, 1717, & 1818) R-5				
				62593

TYLIN INTERNATIONAL



I-94 SOUTHBOUND (DAN RYAN EXPWY)  
 STA. 1264+50 TO STA. 1265+15

P:\02313\road\023\wpk23\ss1817.dwg 02/27/2006 12:34:24 PM