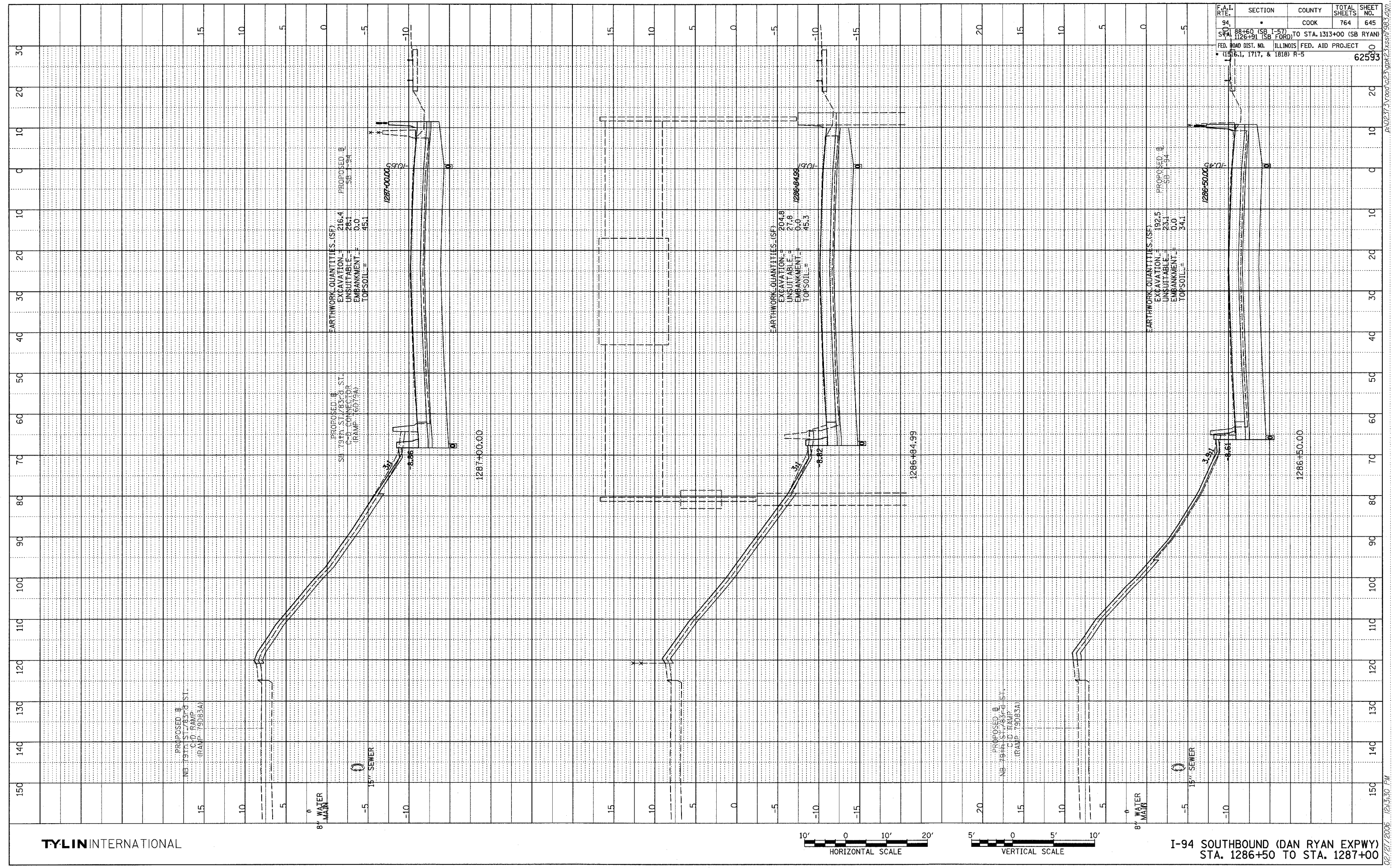
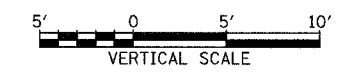
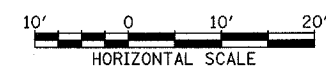


PROFILE
 SURVEYED
 PLATTED
 CHECKED
 DATE NOTED
 STRUCTURE NOTATION CIPCD
 NO.

F.A.I. RTE.	SECTION	COUNTY	TOTAL SHEETS	SHEET NO.
94		COOK	764	645
STA. 1126+91 (SB FORD)	TO STA. 1313+00 (SB RYAN)			
FED. ROAD DIST. NO. ILLINOIS FED. AID PROJECT				62593
(1516.1, 1717, & 1818) R-5				



TYLIN INTERNATIONAL



I-94 SOUTHBOUND (DAN RYAN EXPWY)
 STA. 1286+50 TO STA. 1287+00

02/21/2006 12:33:30 PM
 P:\0217\3\road\023\gpr\23\ssr\93.dgn