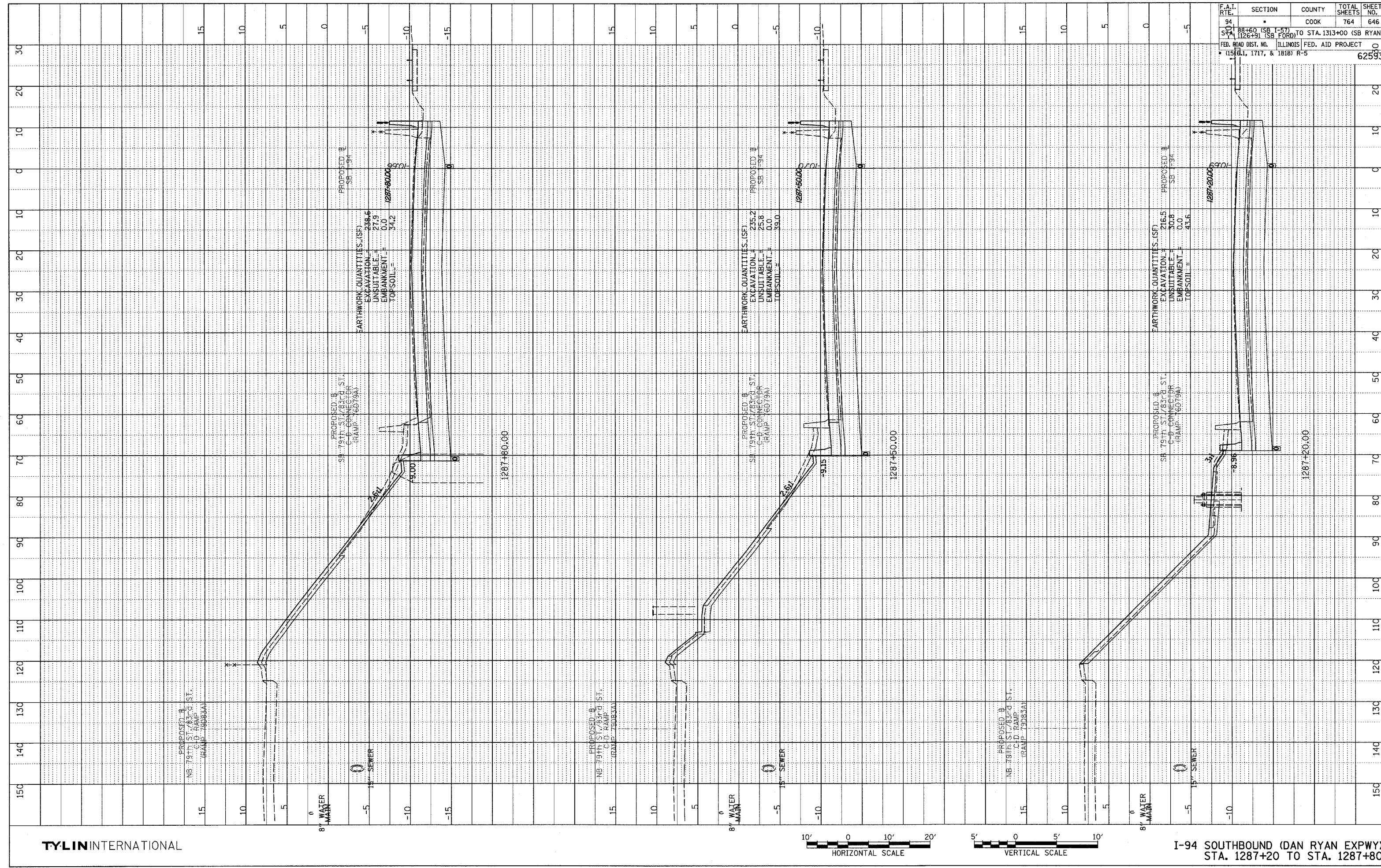
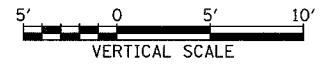


PROFILE SURVEYED
 PLOTTED
 CHECKED
 DATE PLOTTED
 NO. NOTE BOOK
 NO. STRUCTURE NOTATIONS CHND



F.A.I. RTE.	SECTION	COUNTY	TOTAL SHEETS	SHEET NO.
94	•	COOK	764	646
STA. 1287+60 (SB I-57)				
1287+91 (SB FORD)				
FED. ROAD DIST. NO. ILLINOIS FED. AID PROJECT				62593
• (1561, 1717, & 1818) R-5				

TYLIN INTERNATIONAL



I-94 SOUTHBOUND (DAN RYAN EXPWY)
 STA. 1287+20 TO STA. 1287+80

02/27/2006 12:53:31 PM P:\0227\3\road\23\app\23\ssn\983.dgn