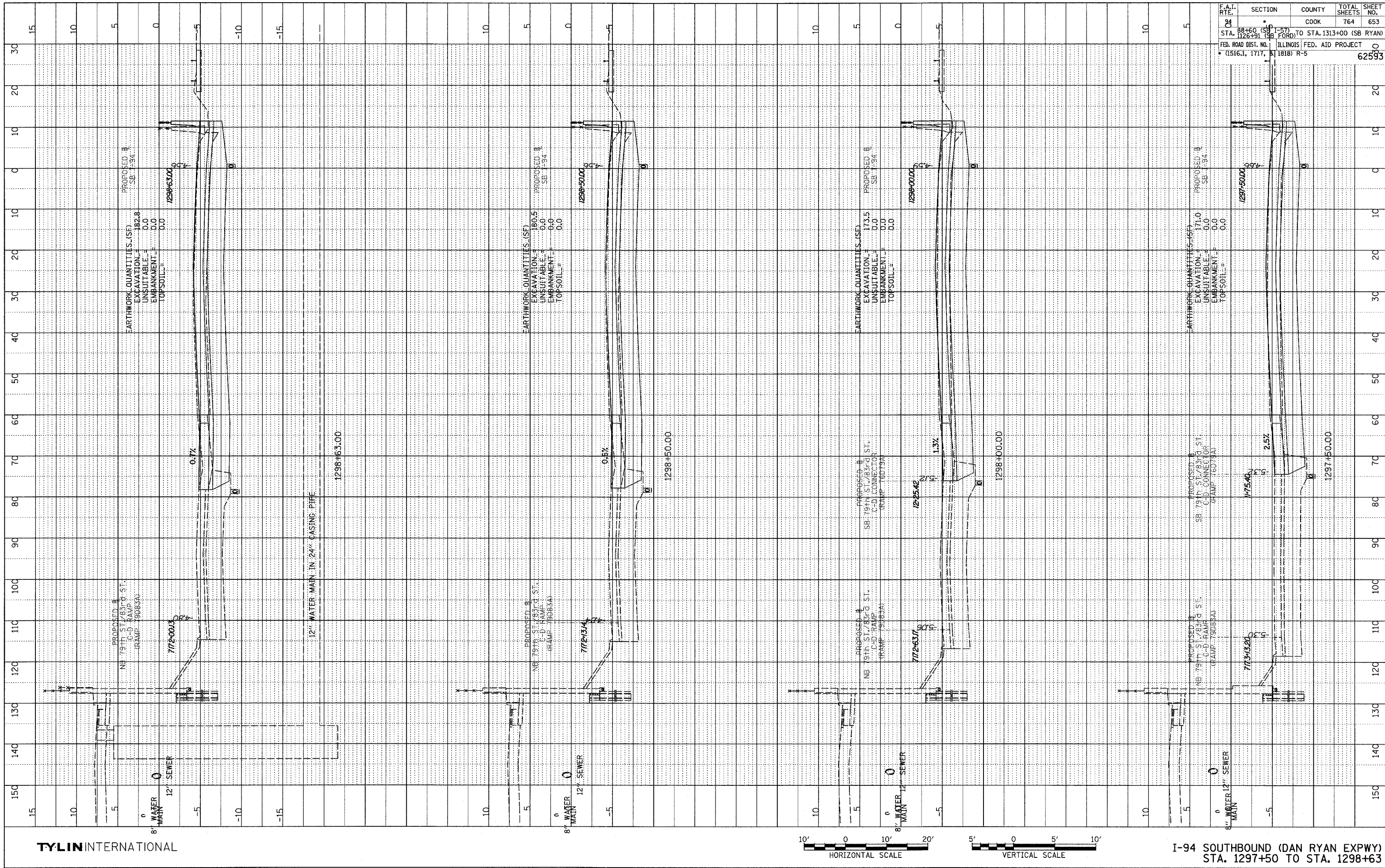
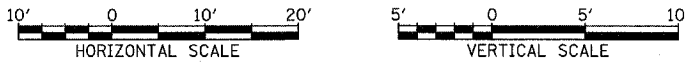


PROFILE SURVEYED
 PLOTTED
 CHECKED
 NOTE BOOK
 NO. STRUCTURE NOTATION CIRCD



F.A.I. RTE.	SECTION	COUNTY	TOTAL SHEETS	SHEET NO.
94	88+60 (SB FORD) TO STA. 1313+00 (SB RYAN)	COOK	764	653
STA. 1126+91 (SB FORD)	ILLINOIS FED. AID PROJECT			
FED. ROAD DIST. NO. (1516.1, 1717, 1818)	R-5			
				62593

TYLIN INTERNATIONAL



I-94 SOUTHBOUND (DAN RYAN EXPWY)
 STA. 1297+50 TO STA. 1298+63

P:\0237\3\000\0237\0237\983.dgn 02/27/2006 12:33:39 PM