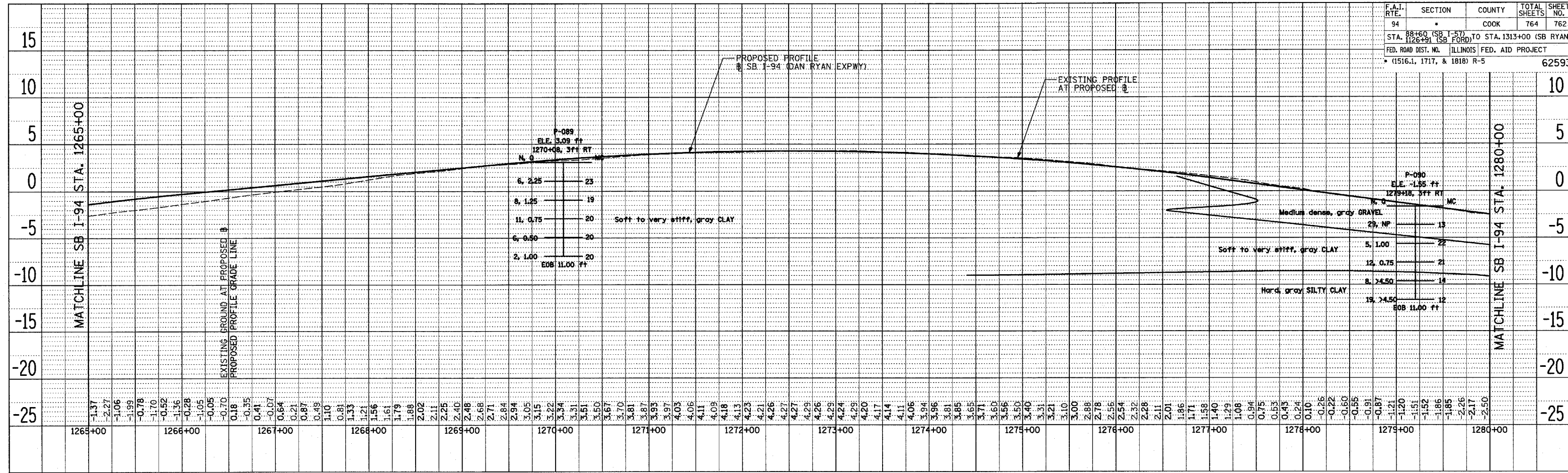


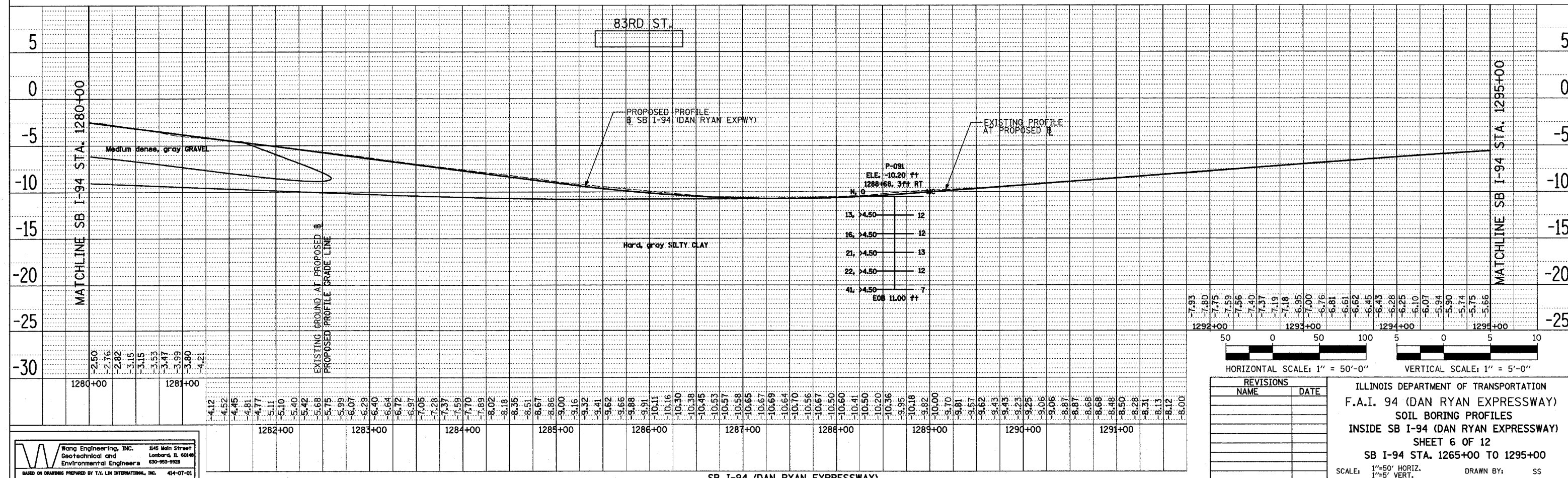
F.A.I. RTE.	SECTION	COUNTY	TOTAL SHEETS	SHEET NO.
94	*	COOK	764	762
STA. 88+60 (SB I-57) TO STA. 1313+00 (SB RYAN)				
FED. ROAD DIST. NO. ILLINOIS FED. AID PROJECT				
* (1516.1, 1717, & 1818) R-5 62593				

PLAN	SURVEYED	BY	DATE
NO.	ALIGNED		
	PLotted		
	Checked		
	RT. OF WAY		
	Checked		
	NO. OF		
	WAY		
	Checked		
	NO.		
	CADD		
	FILE		
	NAME		

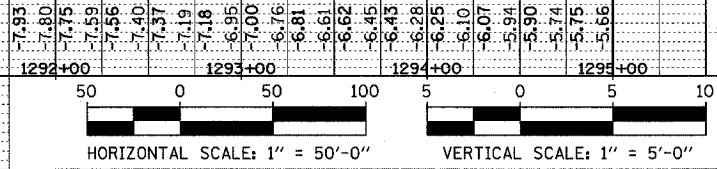


SB I-94 (DAN RYAN EXPRESSWAY)

PLAN	SURVEYED	BY	DATE
NO.	ALIGNED		
	Plotted		
	Checked		
	RT. OF WAY		
	Checked		
	NO. OF		
	WAY		
	Checked		
	NO.		
	CADD		
	FILE		
	NAME		



SB I-94 (DAN RYAN EXPRESSWAY)



REVISIONS	
NAME	DATE

ILLINOIS DEPARTMENT OF TRANSPORTATION
 F.A.I. 94 (DAN RYAN EXPRESSWAY)
 SOIL BORING PROFILES
 INSIDE SB I-94 (DAN RYAN EXPRESSWAY)
 SHEET 6 OF 12
 SB I-94 STA. 1265+00 TO 1295+00
 SCALE: 1"=50' HORIZ. 1"=5' VERT.
 DATE: MARCH 1, 2006
 DRAWN BY: SS
 CHECKED BY: MLS

Wong Engineering, Inc. 1145 North Street
 Geotechnical and Environmental Engineers Lombard, IL 60148
 630-953-9928
 BASED ON DRAWINGS PREPARED BY T.Y. LIN INTERNATIONAL, INC. 414-07-01