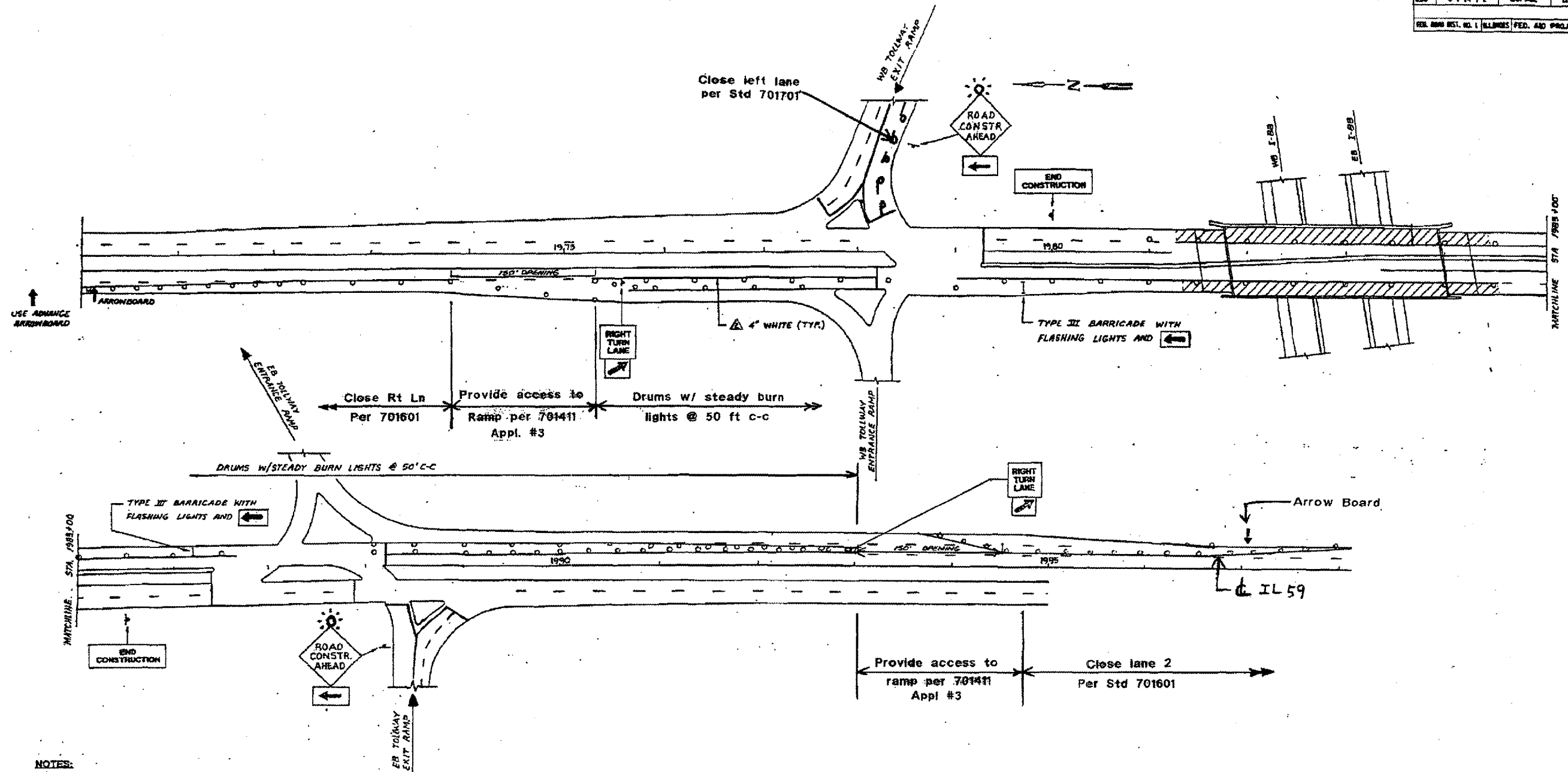


F.A.P. RT.	SECTION	COUNTY	TOTAL SHEETS	SHEET NO.
130	E-1-14-1-2	DAUPHIN	12	5
FED. AID PROJECT				



NOTES:

- TWO (2) ARROWBOARDS SHALL BE USED IN EACH DIRECTION AS DIRECTED BY THE ENGINEER.
- THIS DETAIL SHALL BE USED ALONG WITH AND INCLUDED IN THE COST OF TRAFFIC CONTROL AND PROTECTION - STANDARD 701601 & 701411

3/1/2006 c:\projects\dl105\dl105.dwg

REVISIONS	
NAME	DATE

ILLINOIS DEPARTMENT OF TRANSPORTATION
 IL 59 OVER I-88 BRIDGE
 TRAFFIC CONTROL PLAN
 STAGE I (SN 022-9900)
 SCALE: NONE
 DATE: 2/10/06
 DRAWN BY: SHB
 CHECKED BY: