

SECTION	COUNTY	TOTAL SHEETS	SHEET NUMBER
E-1-14-1-2	Du Page	12	2

**INDEX OF SHEETS**

1	TITLE SHEET
2	INDEX OF SHEETS AND LIST OF STATE STANDARDS AND GENERAL NOTES
3	SUMMARY OF QUANTITIES
4-6	TRAFFIC STAGING DETAILS
7-11	BRIDGE PLANS
12	TRAFFIC CONTROL & PROTECTION FOR SIDE ROADS, INTERSECTIONS & DRIVEWAYS

**LIST OF STATE STANDARD**

<u>STANDARD</u>	<u>DESCRIPTION</u>
701301-02	LANE CLOSURE, 2L 2W, SHORT TIME OPERATION
<del>701401-03</del>	<del>LANE CLOSURE, FREEWAY/EXPRESSWAY</del>
702001-06	TRAFFIC CONTROL DEVICES
701601-04	URBAN LANE CLOSURE, MULTILANE, 1W OR 2W WITH NON-TRAVERSABLE MEDIAN
701701-04	URBAN LANE CLOSURE, MULTILANE INTERSECTION
701411-03	LANE CLOSURE, MULTILANE AT ENTRANCE OR EXIT RAMP FOR SPEED LESS >= 45 MPH

**GENERAL NOTES**


- BEFORE STARTING ANY EXCAVATION, THE CONTRACTOR SHALL CALL "J.U.L.I.E." (JOINT UTILITY LOCATION INFORMATION FOR EXCAVATION) AT (800) 892-0123 FOR FIELD LOCATIONS OF BURIED ELECTRIC, TELEPHONE AND GAS UTILITIES. (48 HOUR NOTIFICATION IS REQUIRED).
- THE CONTRACTOR SHALL COORDINATE CONSTRUCTION ACTIVITIES WITH UTILITY COMPANIES.
- THE CONTRACTOR WILL NOT BE ALLOWED TO SET UP A YARD OR FIELD OFFICE ON STATE PROPERTY WITHOUT WRITTEN PERMISSION FROM THE DEPARTMENT.
- IT SHALL BE THE CONTRACTOR'S RESPONSIBILITY TO VERIFY ALL DIMENSION AND CONDITIONS EXISTING IN THE FIELD PRIOR TO CONSTRUCTION AND ORDERING OF MATERIALS.


- THE CONTRACTOR SHALL CONTACT THE DISTRICT ONE TRAFFIC CONTROL SUPERVISOR AT (847) 705-4470 A MINIMUM OF 72 HOURS IN ADVANCE OF BEGINNING WORK.
- THESE PLANS HAVE BEEN PREPARED FROM NOTES RECEIVED FROM FIELD BRIDGE MAINTENANCE ENGINEERS.
- THE CONTRACTOR SHALL LOCATE AND PROTECT ALL EXISTING ELECTRICAL CONDUIT AND LIGHTING FACILITIES IN AND AROUND THE VICINITY OF THE REPAIR LOCATIONS OF THE BRIDGE.
- DO NOT SCALE PLANS FOR CONSTRUCTION DIMENSIONS

ILLINOIS DEPARTMENT OF TRANSPORTATION

INDEX OF SHEETS  
LIST OF STATE STANDARDS  
GENERAL NOTES

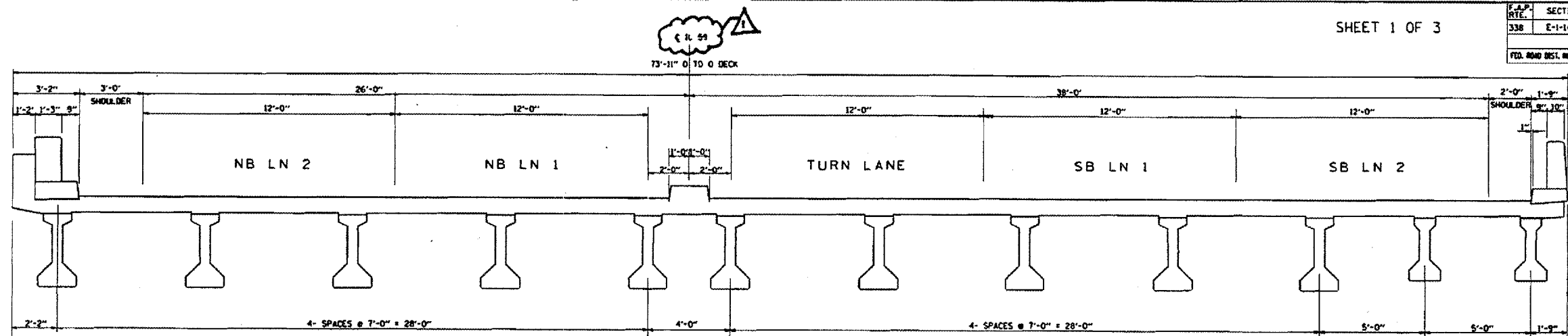
SECTION	COUNTY	TOTAL SHEETS	SHEET NUMBER
E-1-14-I-2	Du Page	12	3

SUMMARY OF QUANTITIES				CONTRACT NO. 62968	
CODE NO	ITEM	UNIT	TOTAL QUANTITIES	URBAN 100% STATE CONSTRUCTION TYPE CODE -SFTY-2A	
				DUPAGE COUNTY	
				LOC 1 022-9900	
50102400	CONCRETE REMOVAL	CU YD	14.2	14.20	
50300255	CONCRETE SUPER STRUCTURE	CU YD	14.2	14.20	
50300300	PROTECTIVE COAT	SQ YD	2040	2040	
50800205	REINFORCEMENT BARS, EPOXY COATED	POUND	1780	1780	
67000400	ENGINEER'S FIELD OFFICE, TYPE A	CAL MO	2.0	2.0	
67100100	MOBILIZATION	L SUM	1.0	1.0	
<del>70100800</del>	<del>TRAFFIC CONTROL AND PROTECTION STANDARD 701401</del>	<del>L SUM</del>	<del>1.0</del>	<del>1.0</del>	
X0325294	PREFORMED JOINT STRIP SEAL	FOOT	149	149	
X0322467	TEMPORARY INFORMATION SIGNING FOR LANE CLOSURE	SQ FT	48	48	
Z0002600	BAR SPLICERS	EACH	28	28	

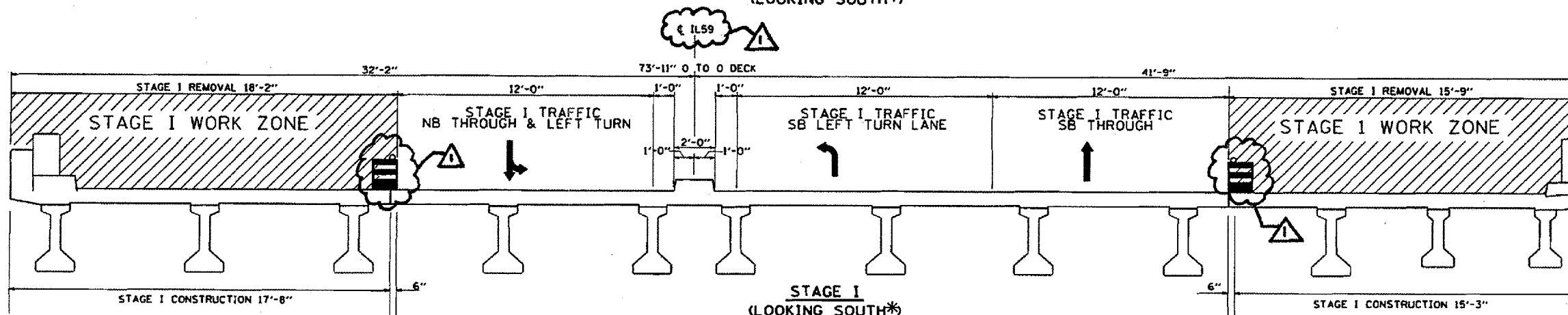
	70102630	TRAFFIC CONTROL AND PROTECTION STD. 701601	L SUM	1	1
	70102635	TRAFFIC CONTROL AND PROTECTION STD. 701701	L SUM	1	1
	70100420	TRAFFIC CONTROL AND PROTECTION STD. 701411	EACH	2	2

ILLINOIS DEPARTMENT OF TRANSPORTATION  
SUMMARY OF QUANTITIES

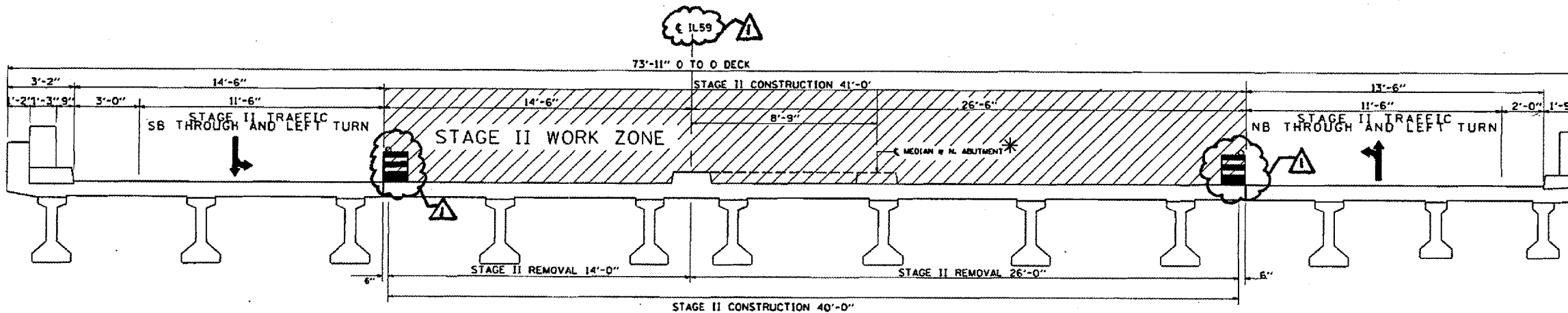
F.A.P. RITE	SECTION	COUNTY	TOTAL SHEETS	SHEET NO.
338	E-1-14-1-2	DUPAGE	12	4
FED. ROAD DIST. NO. 1 ILLINOIS FED. AID PROJECT				



CROSS SECTION  
(LOOKING SOUTH\*)



STAGE I  
(LOOKING SOUTH\*)



STAGE II  
(LOOKING SOUTH\*)

NOTE: ALL DIMENSIONS ARE AT RIGHT ANGLES TO THE C RDWY  
 WORK THIS SHEET WITH TRAFFIC CONTROL PLAN FOR EACH STAGE ON SHEETS 5 & 6  
 \* SHOWING MEDIAN CONFIGURATION & LEFT TURN LANE AT SOUTH ABUTMENT  
 COVER CONFLICTING PAVEMENT MARKINGS WITH BLACK TYPE II TAPE.  
 COST OF TYPE III TAPE & ITS REMOVAL IS INCLUDED IN THE COST OF "TRAFFIC CONTROL & PROTECTION STD 701601"

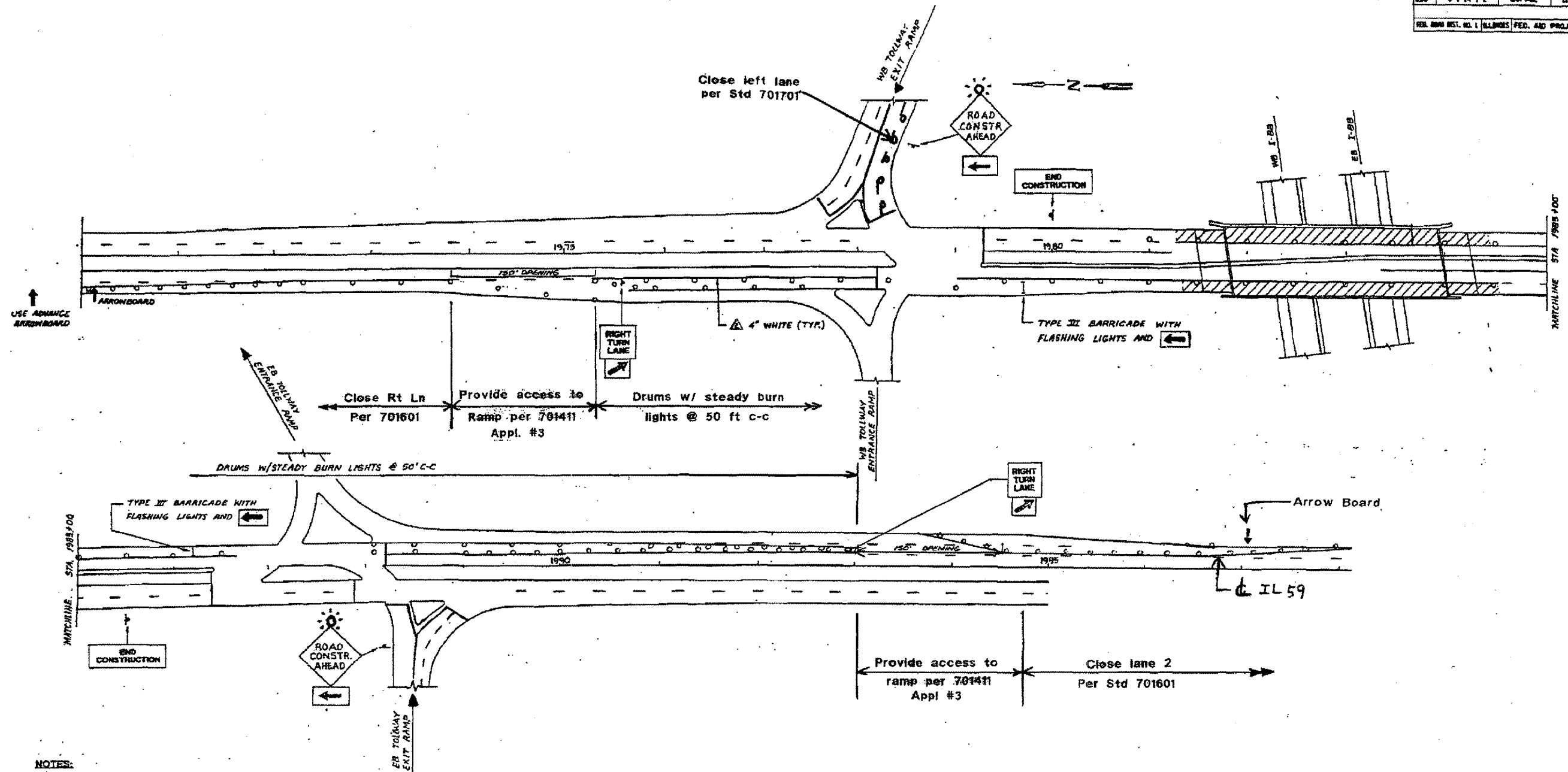
REVISIONS	NAME	DATE

ILLINOIS DEPARTMENT OF TRANSPORTATION  
 IL 59 OVER I-88 BRIDGE  
 STAGING PLAN  
 SN 022-9900

SCALE: NONE  
 DATE: 2/10/06

DRAWN BY: SHB  
 CHECKED BY:

F.A.P. RT.	SECTION	COUNTY	TOTAL SHEETS	SHEET NO.
130	E-1-14-1-2	DAUPHIN	12	5
FED. AID PROJECT				



**NOTES:**

- TWO (2) ARROWBOARDS SHALL BE USED IN EACH DIRECTION AS DIRECTED BY THE ENGINEER.
- THIS DETAIL SHALL BE USED ALONG WITH AND INCLUDED IN THE COST OF TRAFFIC CONTROL AND PROTECTION - STANDARD 701601 & 701411

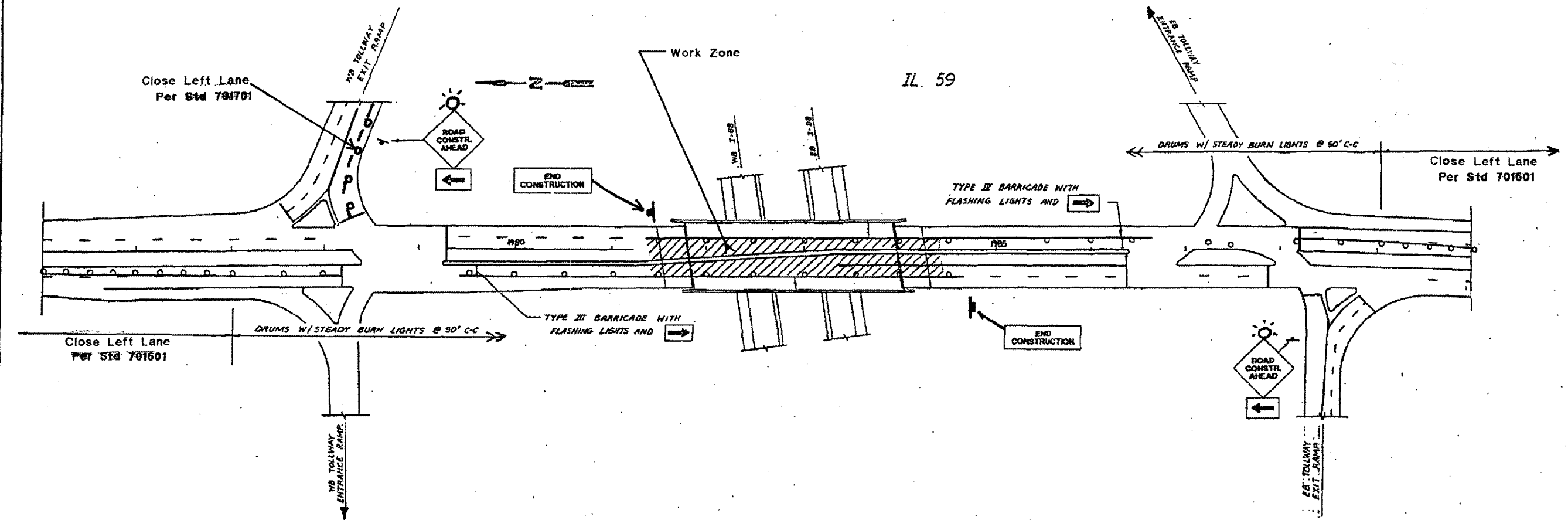
REVISIONS		ILLINOIS DEPARTMENT OF TRANSPORTATION IL 59 OVER I-88 BRIDGE TRAFFIC CONTROL PLAN STAGE I (SN 022-9900)
NAME	DATE	

SCALE: NONE  
DATE: 2/10/06  
DRAWN BY: SHB  
CHECKED BY:

3/1/2006 c:\projects\dl105\dl105.dwg

SECTION	COUNTY	TOTAL SHEETS	SHEET NO.
E-1-14-1-2	DUPAGE	12	6

FED. ROAD DIST. NO. 1 ILLINOIS FED. AID PROJECT



- NOTES:**
- TWO (2) ARROWBOARDS SHALL BE USED IN EACH DIRECTION AS DIRECTED BY THE ENGINEER.
  - THIS DETAIL SHALL BE USED ALONG WITH AND INCLUDED IN THE COST OF TRAFFIC CONTROL AND PROTECTION - STANDARD 701601

REVISIONS	
NAME	DATE

ILLINOIS DEPARTMENT OF TRANSPORTATION  
**IL 59 OVER I-88 BRIDGE**  
**TRAFFIC CONTROL PLAN**  
**STAGE II (SN 022-9900)**

SCALE: NONE  
 DATE: 2/10/06

DRAWN BY: SHB  
 CHECKED BY:

3/1/2006  
 c:\p\o\lect\81011058\01011058.dwg