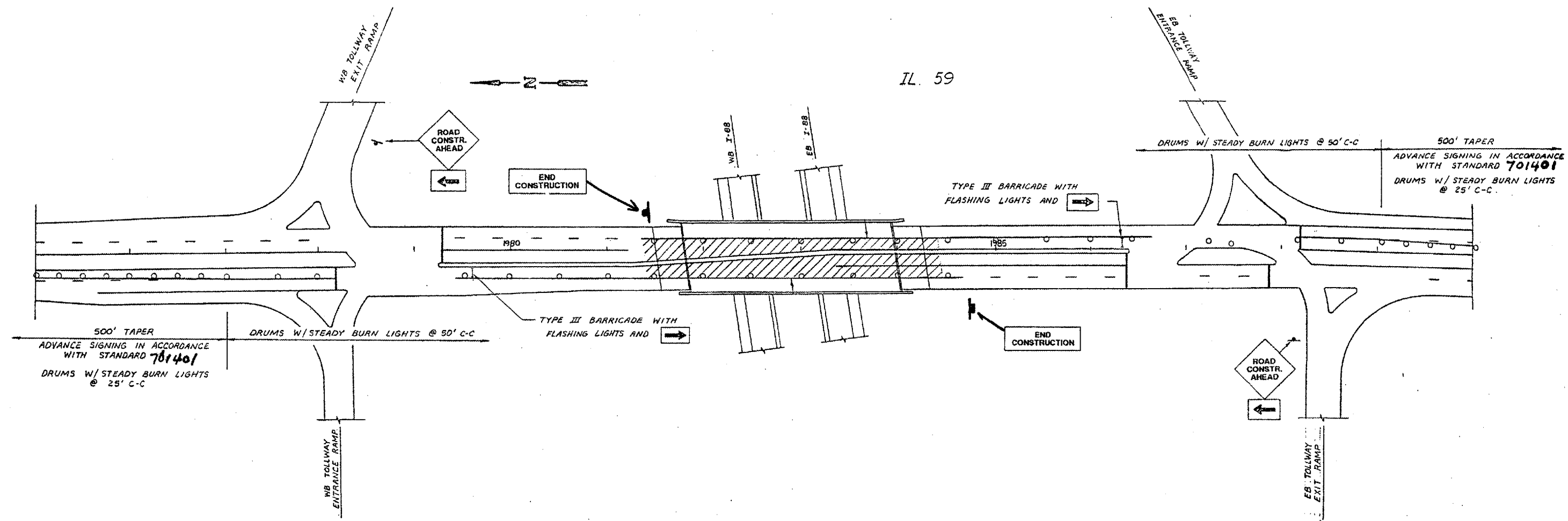


F.A.P. RTE.	SECTION	COUNTY	TOTAL SHEETS	SHEET NO.
338	E-1-14-1-2	DUPAGE	12	6

FED. ROAD DIST. NO. 1 | ILLINOIS | FED. AID PROJECT



NOTES:

- TWO (2) ARROWBOARDS SHALL BE USED IN EACH DIRECTION AS DIRECTED BY THE ENGINEER.
- THIS DETAIL SHALL BE USED ALONG WITH AND INCLUDED IN THE COST OF TRAFFIC CONTROL AND PROTECTION - STANDARD 701401

REVISIONS	
NAME	DATE

ILLINOIS DEPARTMENT OF TRANSPORTATION
 IL 59 OVER I-88 BRIDGE
 TRAFFIC CONTROL PLAN
 STAGE II (SN 022-9900)

SCALE: NONE
 DATE: 2/10/06
 DRAWN BY: SHB
 CHECKED BY:

3/1/2006 c:\projects\dt01105\dt01105a.m32