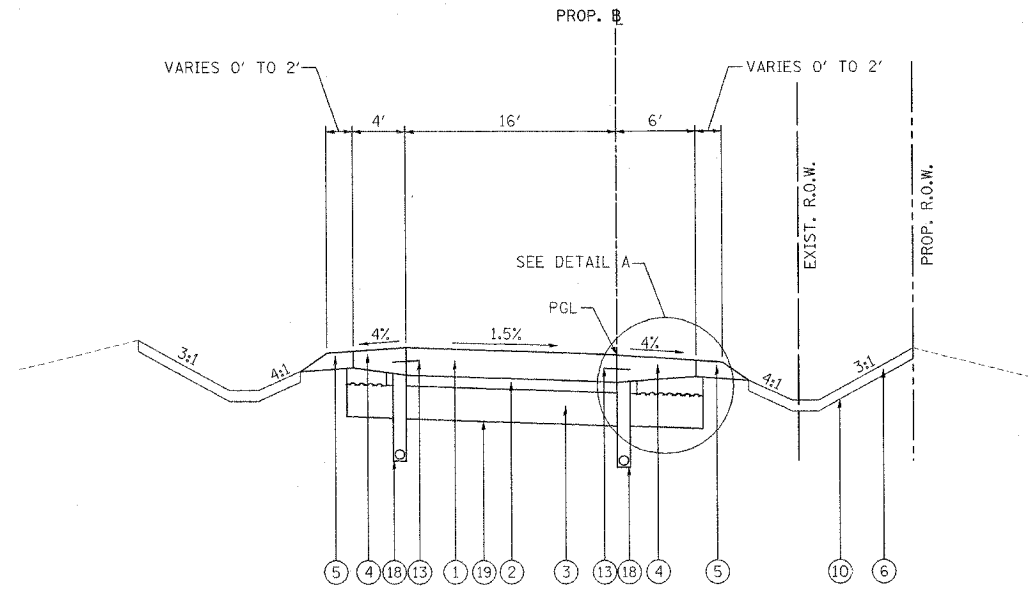
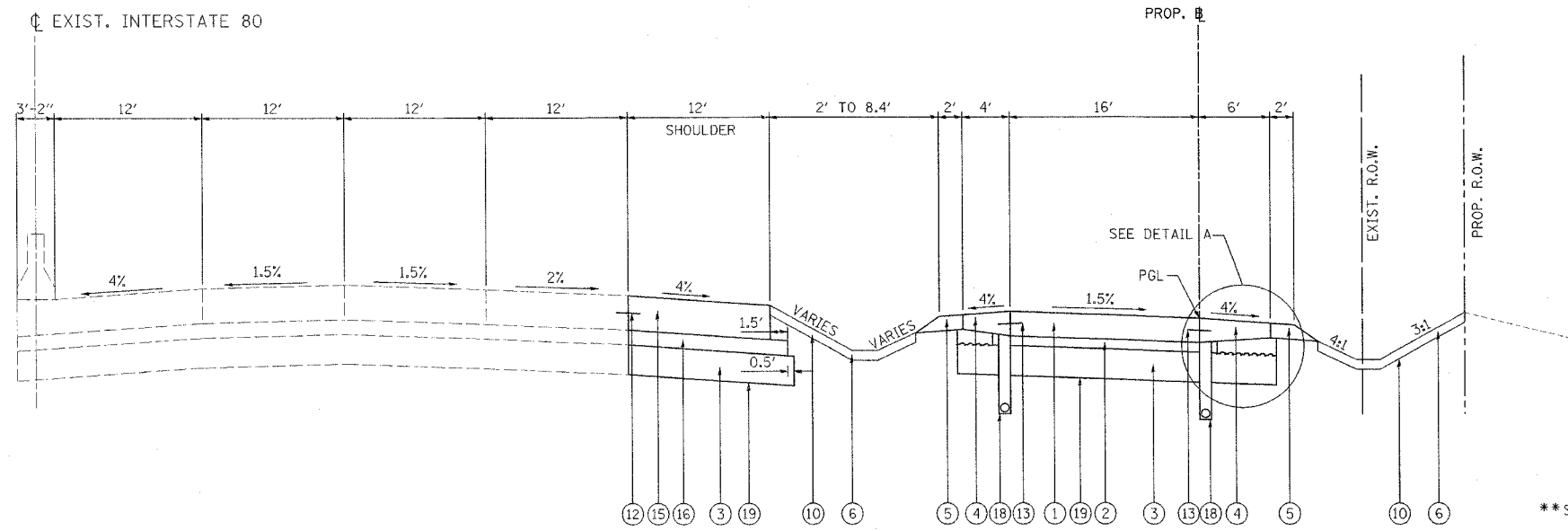
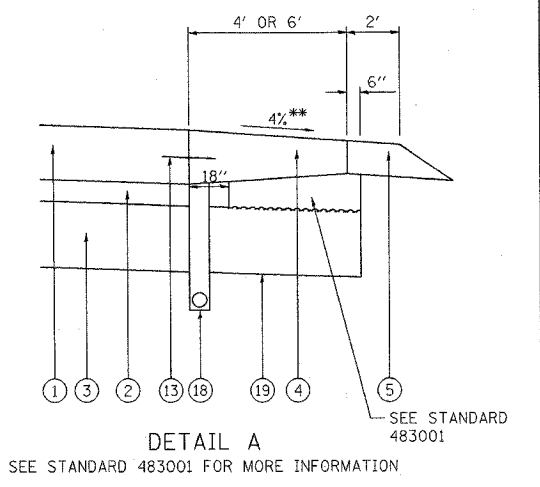
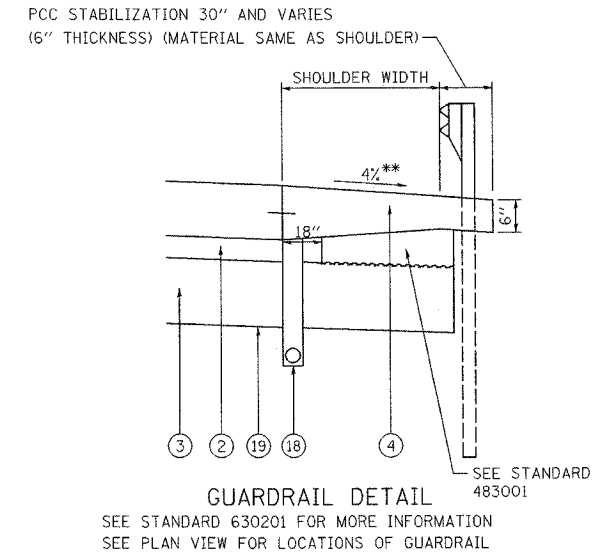


F.A.I. RTE.	SECTION	COUNTY	TOTAL SHEETS	SHEET NO.
80	(32, 47-4)K	KENDALL/GRUNDY	243	17
STA.	TO STA.			
FED. ROAD DIST. NO.	ILLINOIS	FED. AID PROJECT		
CONTRACT NO. 66294				



PROPOSED RAMP TYPICAL TANGENT SECTION
 RAMP A
 401+20.54 TO 401+30.00
 RAMP D
 201+31.40 TO 203+36.00



PROPOSED RAMP TYPICAL TANGENT SECTION
 RAMP C
 190+09.15 TO 191+28.00

- LEGEND:
- ① PORTLAND CEMENT CONCRETE PAVEMENT 10" (JOINTED)
 - ② STABILIZED SUB-BASE 4"
 - ③ AGGREGATE SUBGRADE, 12"
 - ④ PORTLAND CEMENT CONCRETE SHOULDER, 10" OR 14" (MATCH PAVEMENT THICKNESS)
 - ⑤ AGGREGATE SHOULDER TYPE B, 6"
 - ⑥ SEEDING, CLASS 2A
 - ⑦ COMBINATION CONCRETE CURB AND GUTTER, TYPE B-6.24
 - ⑧ CONCRETE MEDIAN, TYPE SB-6.24 (SPECIAL)
 - ⑨ CONCRETE MEDIAN SURFACE, 6"
 - ⑩ TOPSOIL, 4"
 - ⑪ SODDING, SALT TOLERANT
 - ⑫ LONGITUDINAL CONSTRUCTION JOINT, NO. 8 EPOXY COATED TIE BARS 24" LONG AT 24" CENTERS
 - ⑬ LONGITUDINAL CONSTRUCTION JOINT, NO. 6 EPOXY COATED TIE BARS 24" LONG AT 24" CENTERS
 - ⑭ SAWED LONGITUDINAL JOINT WITH NO. 6 x 30 EPOXY COATED DEFORMED TIE BARS AT 30" CENTERS
 - ⑮ CONTINUOUSLY REINFORCED PORTLAND CEMENT CONCRETE PAVEMENT, 14"
 - ⑯ STABILIZED SUB-BASE 6" (BAM)
 - ⑰ AGGREGATE SHOULDER TYPE A, 4"
 - ⑱ PIPE UNDERDRAINS 4" (MODIFIED)
 - ⑲ GEOTECHNICAL FABRIC FOR GROUND STABILIZATION
 - ⑳ GRANULAR SUBGRADE REPLACEMENT
 - ㉑ PORTLAND CEMENT CONCRETE SIDEWALK, 4"

**SLOPE OF SHOULDER SHALL BE THE SAME AS THE SUPERELEVATION RATE BUT NOT LESS THAN 4%.

REVISIONS		ILLINOIS DEPARTMENT OF TRANSPORTATION FAI ROUTE 80 (I-80 AT MINOOKA INTERCHANGE)
NAME	DATE	
		PROPOSED TYPICAL SECTIONS

SCALE: NONE
 DATE: 2/10/06
 DRAWN BY: NJS
 CHECKED BY: JJC

PATRICK
 ENGINEERING INC.
 LISLE, ILLINOIS