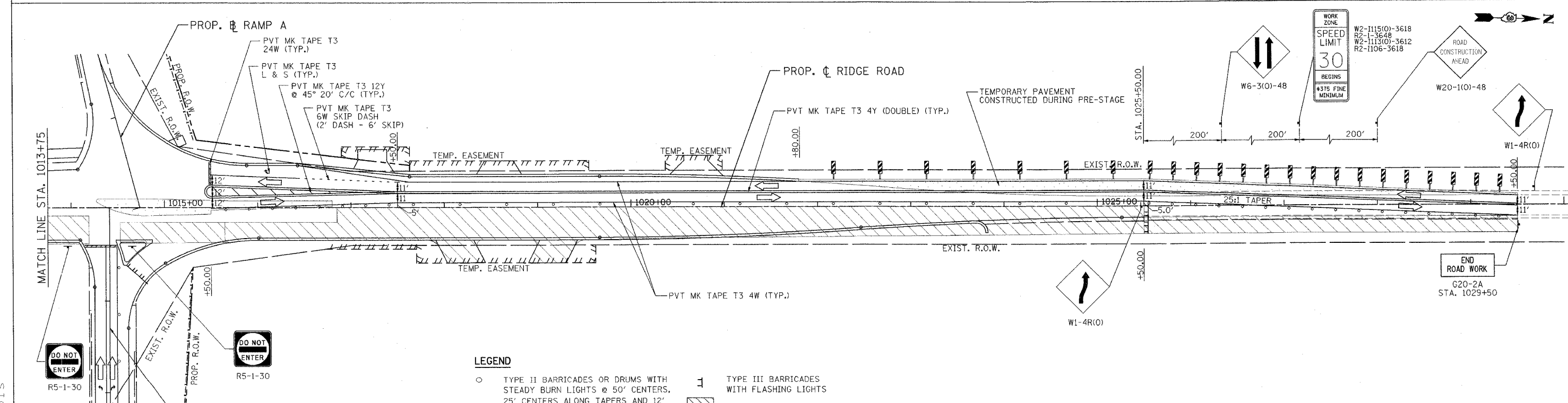
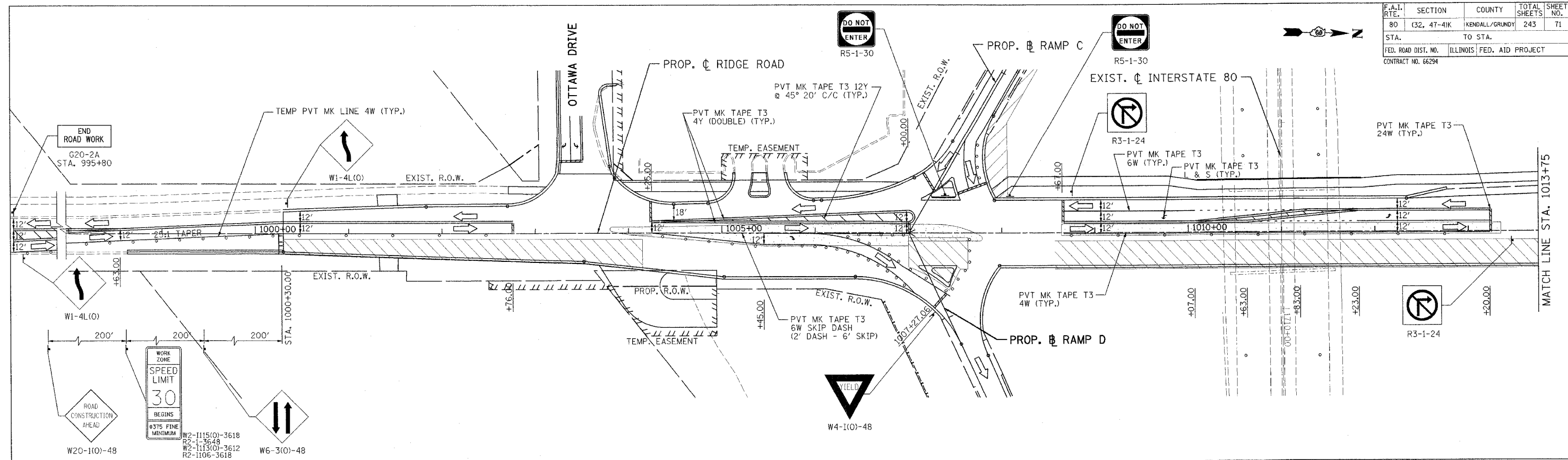


F.A.I. RTE.	SECTION	COUNTY	TOTAL SHEETS	SHEET NO.
80	(32, 47-41K)	KENDALL/GRUNDY	243	71
STA.	TO STA.			
FED. ROAD DIST. NO.	ILLINOIS FED. AID PROJECT			
CONTRACT NO. 66294				



- LEGEND**
- TYPE II BARRICADES OR DRUMS WITH STEADY BURN LIGHTS @ 50' CENTERS, 25' CENTERS ALONG TAPERS AND 12' CENTERS ALONG RADIUS RETURNS
  - ➔ TRAFFIC DIRECTION
  - ▬ VERTICAL PANEL WITH STEADY BURNING LIGHT
  - ⊥ TYPE III BARRICADES WITH FLASHING LIGHTS
  - ▨ WORK ZONE
  - ▤ TEMPORARY PAVEMENT
  - ➡ ARROW BOARD

REVISIONS	
NAME	DATE

ILLINOIS DEPARTMENT OF TRANSPORTATION  
 FAI ROUTE 80 (I-80 AT MINOOKA INTERCHANGE)  
 SUGGESTED STAGING OF CONSTRUCTION & TRAFFIC CONTROL  
 STAGE 2A  
 RIDGE ROAD  
 STA. 1000+00 TO STA. 1029+50  
 SCALE: 1:50  
 DATE: 2/10/06

DRAWN BY: MAT  
 CHECKED BY: JJC

**PATRICK**  
 ENGINEERING INC.  
 LISLE, ILLINOIS