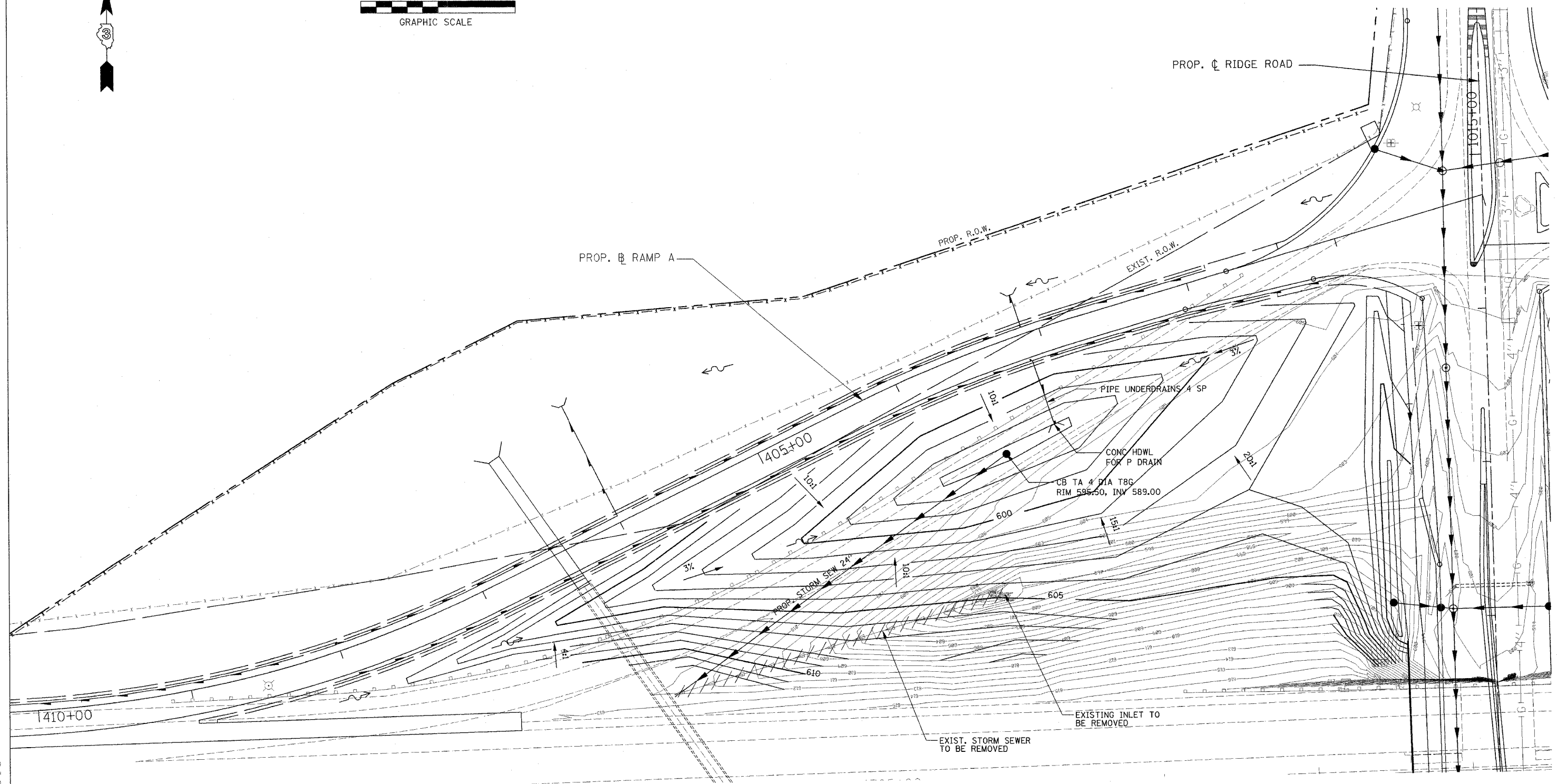
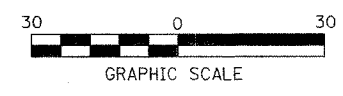


F.A.I. RTE.	SECTION	COUNTY	TOTAL SHEETS	SHEET NO.
80	(32, 47-4)K	KENDALL/GRUNDY	243	100
STA.	TO STA.			
FED. ROAD DIST. NO.	ILLINOIS FED. AID PROJECT			
CONTRACT NO. 66294				



REVISIONS		ILLINOIS DEPARTMENT OF TRANSPORTATION FAI ROUTE 80 (I-80 AT MINOOKA INTERCHANGE)
NAME	DATE	
		PROPOSED GRADING PLAN RAMP A INFELD
SCALE: 1"=30'		DRAWN BY: SRL CHECKED BY: TKL
DATE: 2/10/06		

PATRICK
ENGINEERING INC.
LISLE, ILLINOIS