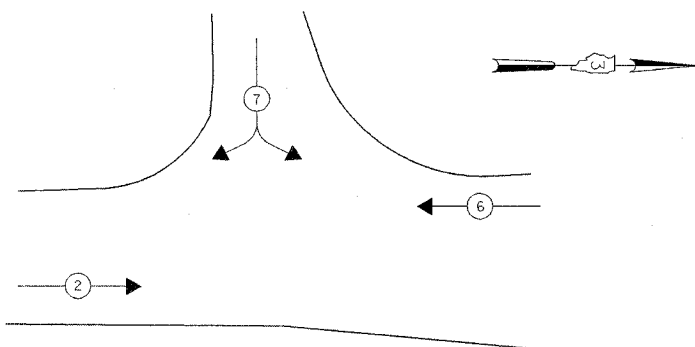


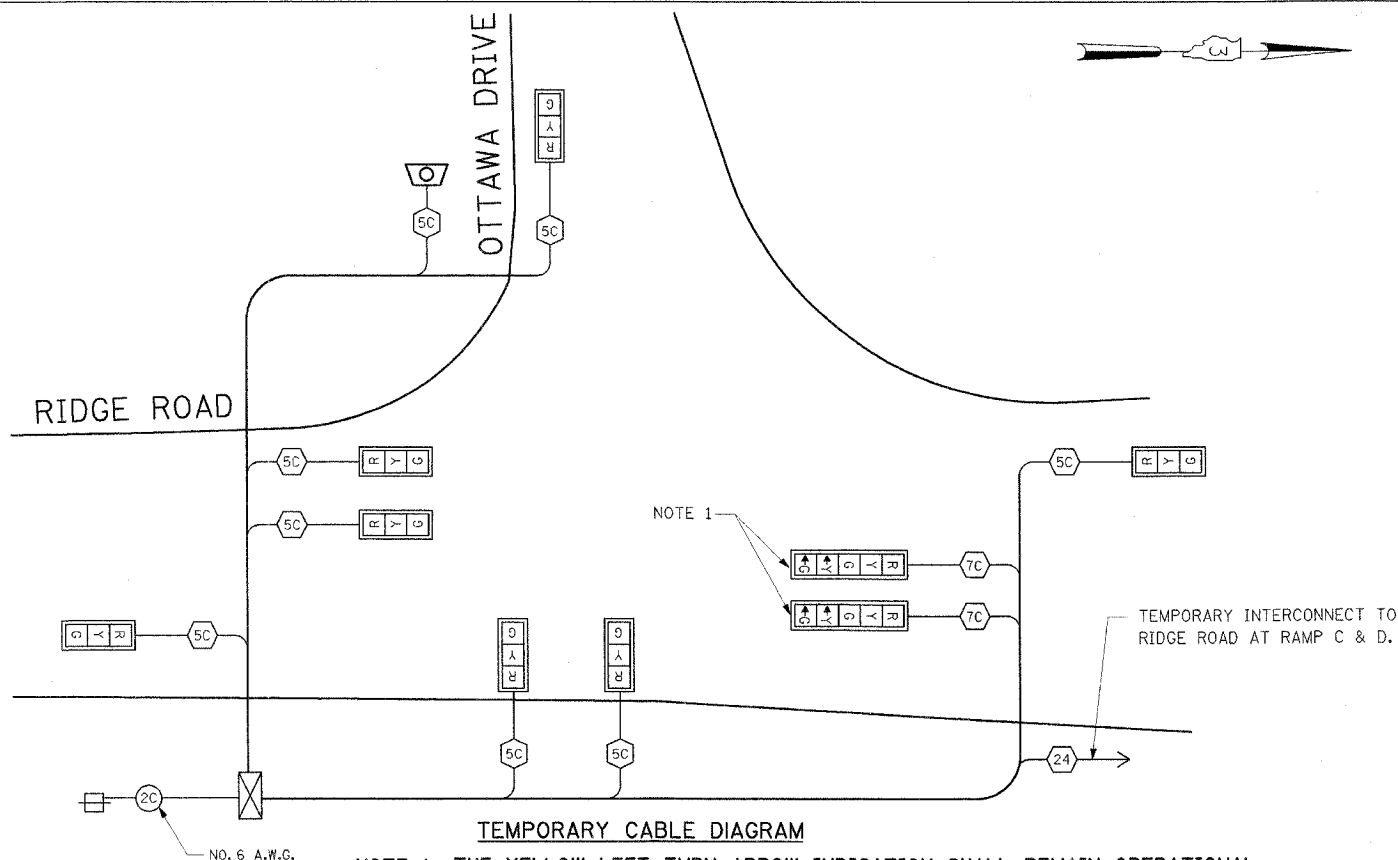
CONTROLLER SEQUENCE

NAME OF INTERSECTION: RIDGE ROAD AT OTTAWA DRIVE
 CONTROLLER SPECIFIED: FULL ACTUATED CONTROLLER,
STANDARD SEQUENCE II, 3 PHASES IN TYPE IV CABINET

REFERRING TO STANDARD 857001, THE VEHICULAR AND PEDESTRIAN PHASES USED ARE DESIGNATED BELOW.
 (SHOW MOVEMENTS AND PHASE NUMBERS)



PHASE DESIGNATION DIAGRAM FOR CONSTRUCTION STAGES 1, 1A, 1B, 2, 2A, AND 3



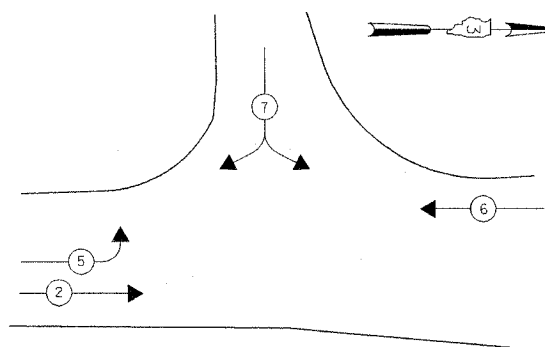
TEMPORARY CABLE DIAGRAM

NOTE 1: THE YELLOW LEFT TURN ARROW INDICATION SHALL REMAIN OPERATIONAL DURING PRE-STAGE OF CONSTRUCTION AND SHALL BE DISCONNECTED AND BAGGED DURING CONSTRUCTION STAGES 1, 1A, 1B, 2, 2A, AND 3.

NOTE 2: PLEASE CALL DAN DEVINE AT 815-434-8505 ON DISCONNECTING THE YELLOW LEFT TURN ARROW DURING CONSTRUCTION STAGES AT RIDGE ROAD WITH OTTAWA DRIVE.

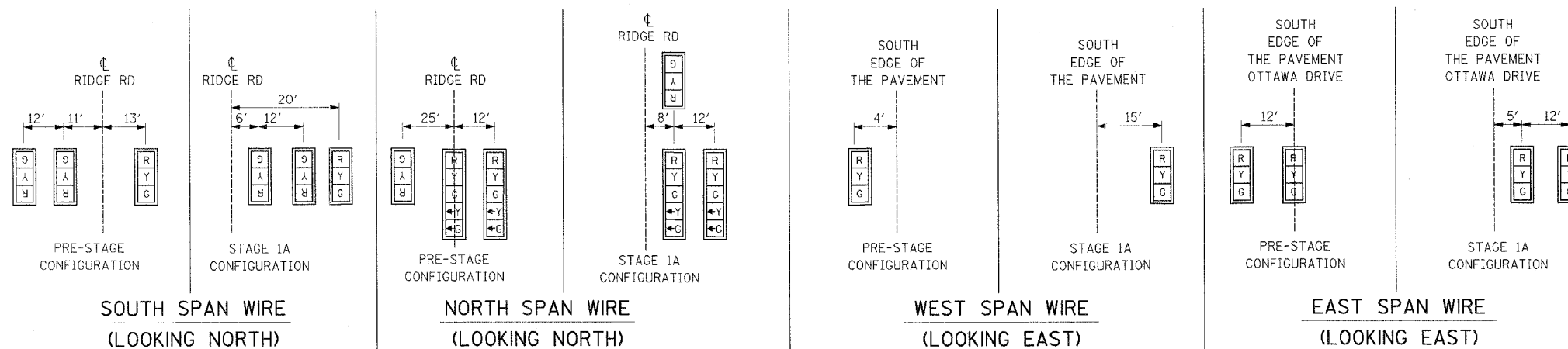
TEMPORARY CABLE DIAGRAM LEGEND

- TEMPORARY CONTROLLER CABINET
- TEMPORARY SERVICE INSTALLATION
- NUMBER OF CONDUCTORS
- PROPOSED CABLE NUMBER
- CABLE NUMBER
- YELLOW TURN ARROW
- GREEN TURN ARROW
- 8" SIGNAL
- 12" SIGNAL
- VEHICLE PEDESTRIAN MOVEMENT TERMINATOR
- WALK / DON'T WALK SECTION
- TRAFFIC SIGNAL BACKPLATE
- PUSHBUTTON DETECTOR
- VEHICLE DETECTOR, INDUCTION LOOP
- OPTICAL DETECTOR
- MICROWAVE DETECTOR, TC 26B



PHASE DESIGNATION DIAGRAM FOR CONSTRUCTION PRE-STAGE ONLY

- ### LEGEND
- DUAL ENTRY PHASE
 - O.L. OVERLAP
 - PEDESTRIAN PHASE
 - * NUMBER REFERS TO ASSOCIATED PHASE



SOUTH SPAN WIRE (LOOKING NORTH)

NORTH SPAN WIRE (LOOKING NORTH)

WEST SPAN WIRE (LOOKING EAST)

EAST SPAN WIRE (LOOKING EAST)

SCHEDULE OF TEMPORARY SIGNAL HEADS

(FOR INFORMATION ONLY, ALL TEMPORARY SIGNALS INCLUDED IN COST OF ITEM: TEMPORARY TRAFFIC SIGNAL INSTALLATION)

ITEM	UNIT	QUANTITY
SIGNAL HEAD, 1-FACE, 3 SECTION, SPAN WIRE MOUNTED	EACH	7
SIGNAL HEAD, 1-FACE, 5 SECTION, SPAN WIRE MOUNTED	EACH	2

THE TRAFFIC SIGNAL CONTROL EQUIPMENT FOR THIS PROJECT SHALL BE "ECONOLITE" TO MATCH THE EXISTING TRAFFIC SIGNAL CONTROLLER IN THE VILLAGE OF MINOOKA.

GO GANDHI AND ASSOCIATES, INC.
 ENGINEERS AND PLANNERS
 6035 N. NORTHWEST HIGHWAY
 SUITE 306
 CHICAGO, ILLINOIS 60631 TEL. (773) 774-5790

REVISIONS	
NAME	DATE

ILLINOIS DEPARTMENT OF TRANSPORTATION
 FAI ROUTE 80 (I-80 AT MINOOKA INTERCHANGE)

TEMPORARY CABLE DIAGRAM AND
 PHASE DESIGNATION DIAGRAM
 RIDGE ROAD AT OTTAWA DRIVE

SCALE: NONE
 DATE: 2/10/06

DRAWN BY: SA/KGP
 CHECKED BY: PKG