

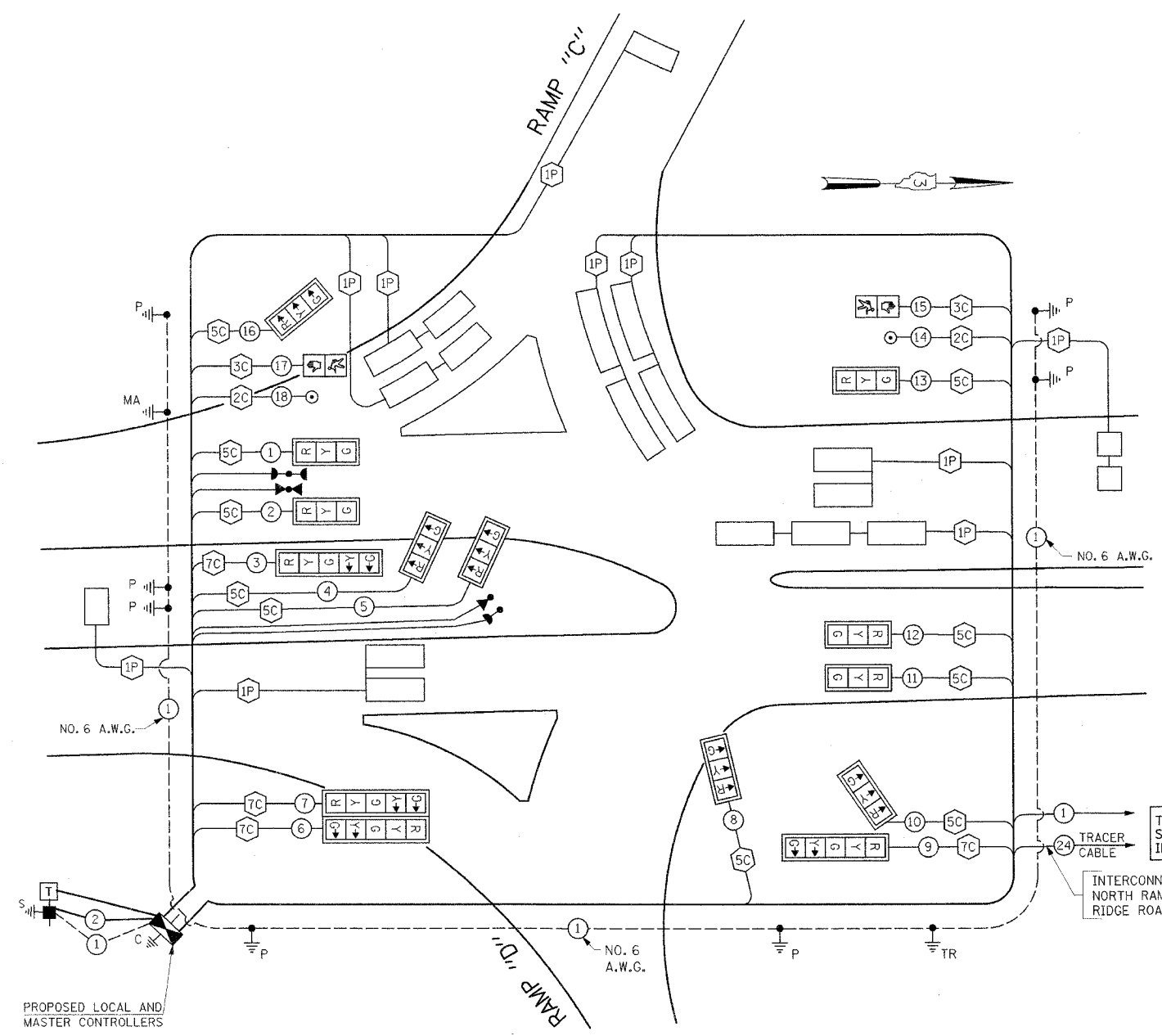
F.A.I. RTE.	SECTION	COUNTY	TOTAL SHEETS	SHEET NO.
80	(32, 47-4)K	KENDALL/GRUNDY	243	121
STA.	TO STA.			
FED. ROAD DIST. NO.	ILLINOIS	FED. AID PROJECT		
CONTRACT NO. 66294				

QUANTITY	UNIT	ITEM
14	SQ FT	SIGN PANEL - TYPE 1
145	FOOT	CONDUIT IN TRENCH, 1 1/4" DIA., PVC
915	FOOT	CONDUIT IN TRENCH, 2" DIA., PVC
196	FOOT	CONDUIT IN TRENCH, 2 1/2" DIA., PVC
73	FOOT	CONDUIT IN TRENCH, 2 1/2" DIA., PVC, SCHEDULE 80
10	FOOT	CONDUIT IN TRENCH, 4" DIA., PVC, SCHEDULE 80
88	FOOT	CONDUIT PUSHED, 3" DIA., PVC, SCHEDULE 80
231	FOOT	CONDUIT PUSHED, 4" DIA., PVC, SCHEDULE 80
11	EACH	CONCRETE HANDHOLE
1	EACH	CONCRETE DOUBLE HANDHOLE
1255	FOOT	TRENCH AND BACKFILL FOR ELECTRICAL WORK
1	EACH	FULL-ACTUATED CONTROLLER AND TYPE IV CABINET, SPECIAL
1	EACH	TRANSCEIVER-FIBER OPTIC
397	FOOT	ELECTRIC CABLE IN CONDUIT, SIGNAL NO. 14 2C
772	FOOT	ELECTRIC CABLE IN CONDUIT, SIGNAL NO. 14 3C
2016	FOOT	ELECTRIC CABLE IN CONDUIT, SIGNAL NO. 14 5C
543	FOOT	ELECTRIC CABLE IN CONDUIT, SIGNAL NO. 14 7C
3088	FOOT	ELECTRIC CABLE IN CONDUIT, LEAD-IN, NO. 14 1 PAIR
37	FOOT	ELECTRIC CABLE IN CONDUIT, SERVICE, NO. 6 2C
1	EACH	TRAFFIC SIGNAL POST, GALVANIZED STEEL 10 FT.
5	EACH	TRAFFIC SIGNAL POST, GALVANIZED STEEL 16 FT.
1	EACH	TRAFFIC SIGNAL POST, GALVANIZED STEEL 18 FT.
1	EACH	STEEL COMBINATION MAST ARM ASSEMBLY AND POLE, 55 FT.
28	FOOT	CONCRETE FOUNDATION, TYPE A
4	FOOT	CONCRETE FOUNDATION, TYPE D
15	FOOT	CONCRETE FOUNDATION, TYPE E 36-INCH DIAMETER
14	FOOT	TRAFFIC SIGNAL BACKPLATE, LOUVERED, FORMED PLASTIC
10	EACH	INDUCTIVE LOOP DETECTOR
1370	FOOT	DETECTOR LOOP, TYPE 1
2	EACH	LIGHT DETECTOR
1	EACH	LIGHT DETECTOR AMPLIFIER
2	EACH	PEDESTRIAN PUSH-BUTTON
1	EACH	TEMPORARY TRAFFIC SIGNAL INSTALLATION
1	EACH	UNINTERRUPTED POWER SUPPLY
1	EACH	SERVICE INSTALLATION, POLE MOUNT
672	FOOT	ELECTRIC CABLE IN CONDUIT, GROUNDING, NO. 6 1C
359	FOOT	ELECTRIC CABLE IN CONDUIT NO. 20 3/C, TWISTED, SHIELDED
8	EACH	SIGNAL HEAD, POLYCARBONATE, LED, 1-FACE, 3-SECTION, BRACKET MOUNTED
2	EACH	SIGNAL HEAD, POLYCARBONATE, LED, 1-FACE, 3-SECTION, MAST ARM MOUNTED
3	EACH	SIGNAL HEAD, POLYCARBONATE, LED, 1-FACE, 5-SECTION, BRACKET MOUNTED
1	EACH	SIGNAL HEAD, POLYCARBONATE, LED, 1-FACE, 5-SECTION, MAST ARM MOUNTED
2	EACH	PEDESTRIAN SIGNAL HEAD, L.E.D., 1-FACE, BRACKET MOUNTED

* 100% COST TO VILLAGE OF MINOOKA

CABLE PLAN LEGEND

- ⊙ NUMBER OF CONDUCTORS
- PROPOSED CABLE NUMBER
- .. CABLE NUMBER
- YELLOW TURN ARROW
- GREEN TURN ARROW
- 8" SIGNAL
- 12" SIGNAL
- VEHICLE PEDESTRIAN MOVEMENT TERMINATOR
- 12' (300mm) PEDESTRIAN SIGNAL SECTION
- ☐ TRAFFIC SIGNAL BACKPLATE
- ☐ CONTROLLER CABINET
- SERVICE INSTALLATION
- VEHICLE DETECTOR, INDUCTION LOOP
- PUSH-BUTTON DETECTOR
- MAGNETIC DETECTOR
- EMERGENCY VEHICLE LIGHT DETECTOR
- CONFIRMATION BEACON
- ☐ TELEPHONE INSTALLATION



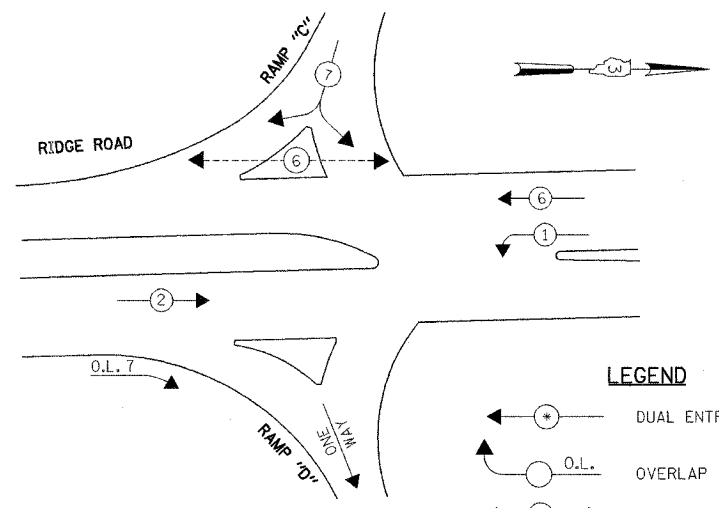
CABLE PLAN

CONTROLLER SEQUENCE

NAME OF INTERSECTION: RIDGE ROAD AT RAMPS "C" AND "D"
 CONTROLLER SPECIFIED: FULL ACTUATED CONTROLLER,
STANDARD SEQUENCE II, 3 PHASES IN TYPE IV CABINET

REFERRING TO STANDARD 857001, THE VEHICULAR AND PEDESTRIAN PHASES USED ARE DESIGNATED BELOW.

(SHOW MOVEMENTS AND PHASE NUMBERS)



PHASE DESIGNATION DIAGRAM

LEGEND

- ⊙ DUAL ENTRY PHASE
- O.L. OVERLAP
- ⊙ PEDESTRIAN PHASE
- * NUMBER REFERS TO ASSOCIATED PHASE

THE TRAFFIC SIGNAL CONTROL EQUIPMENT FOR THIS PROJECT SHALL BE "ECONOLITE" TO MATCH THE EXISTING TRAFFIC SIGNAL CONTROLLER IN THE VILLAGE OF MINOOKA.

REVISIONS	
NAME	DATE

ILLINOIS DEPARTMENT OF TRANSPORTATION
 FAI ROUTE 80 (I-80 AT MINOOKA INTERCHANGE)

CABLE DIAGRAM AND PHASE DESIGNATION DIAGRAM RIDGE ROAD AT RAMPS "C" AND "D"

SCALE: NONE
 DATE: 2/10/06
 DRAWN BY: SA/KGP
 CHECKED BY: PKG