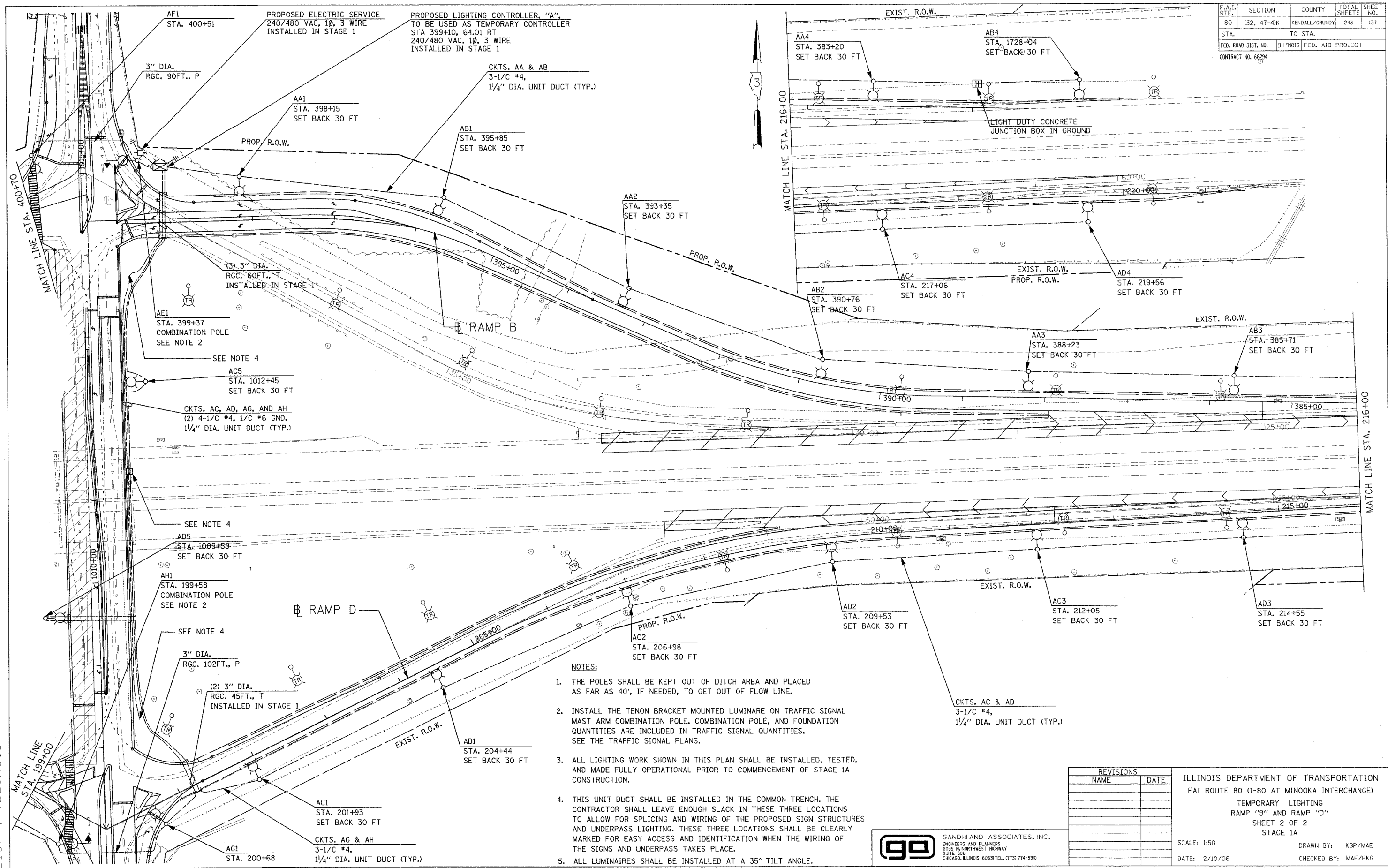


F.A.I. RTE.	SECTION	COUNTY	TOTAL SHEETS	SHEET NO.
80	(32, 47-4)K	KENDALL/GRUNDY	243	137
STA.	TO STA.			
FED. ROAD DIST. NO.	ILLINOIS FED. AID PROJECT			
CONTRACT NO. 66294				



- NOTES:**
1. THE POLES SHALL BE KEPT OUT OF DITCH AREA AND PLACED AS FAR AS 40', IF NEEDED, TO GET OUT OF FLOW LINE.
  2. INSTALL THE TENON BRACKET MOUNTED LUMINAIRE ON TRAFFIC SIGNAL MAST ARM COMBINATION POLE. COMBINATION POLE, AND FOUNDATION QUANTITIES ARE INCLUDED IN TRAFFIC SIGNAL QUANTITIES. SEE THE TRAFFIC SIGNAL PLANS.
  3. ALL LIGHTING WORK SHOWN IN THIS PLAN SHALL BE INSTALLED, TESTED, AND MADE FULLY OPERATIONAL PRIOR TO COMMENCEMENT OF STAGE 1A CONSTRUCTION.
  4. THIS UNIT DUCT SHALL BE INSTALLED IN THE COMMON TRENCH. THE CONTRACTOR SHALL LEAVE ENOUGH SLACK IN THESE THREE LOCATIONS TO ALLOW FOR SPLICING AND WIRING OF THE PROPOSED SIGN STRUCTURES AND UNDERPASS LIGHTING. THESE THREE LOCATIONS SHALL BE CLEARLY MARKED FOR EASY ACCESS AND IDENTIFICATION WHEN THE WIRING OF THE SIGNS AND UNDERPASS TAKES PLACE.
  5. ALL LUMINAIRES SHALL BE INSTALLED AT A 35° TILT ANGLE.

REVISIONS	
NAME	DATE

ILLINOIS DEPARTMENT OF TRANSPORTATION  
 FAI ROUTE 80 (I-80 AT MINOOKA INTERCHANGE)  
 TEMPORARY LIGHTING  
 RAMP "B" AND RAMP "D"  
 SHEET 2 OF 2  
 STAGE 1A

SCALE: 1:50  
 DATE: 2/10/06

DRAWN BY: KGP/MAE  
 CHECKED BY: MAE/PGK

**GO** GANDHI AND ASSOCIATES, INC.  
 ENGINEERS AND PLANNERS  
 6035 N. NORTHWEST HIGHWAY  
 SUITE 300  
 CHICAGO, ILLINOIS 60631 TEL. (773) 774-5910

**PATRICK**  
 ENGINEERING INC.  
 LISLE, ILLINOIS