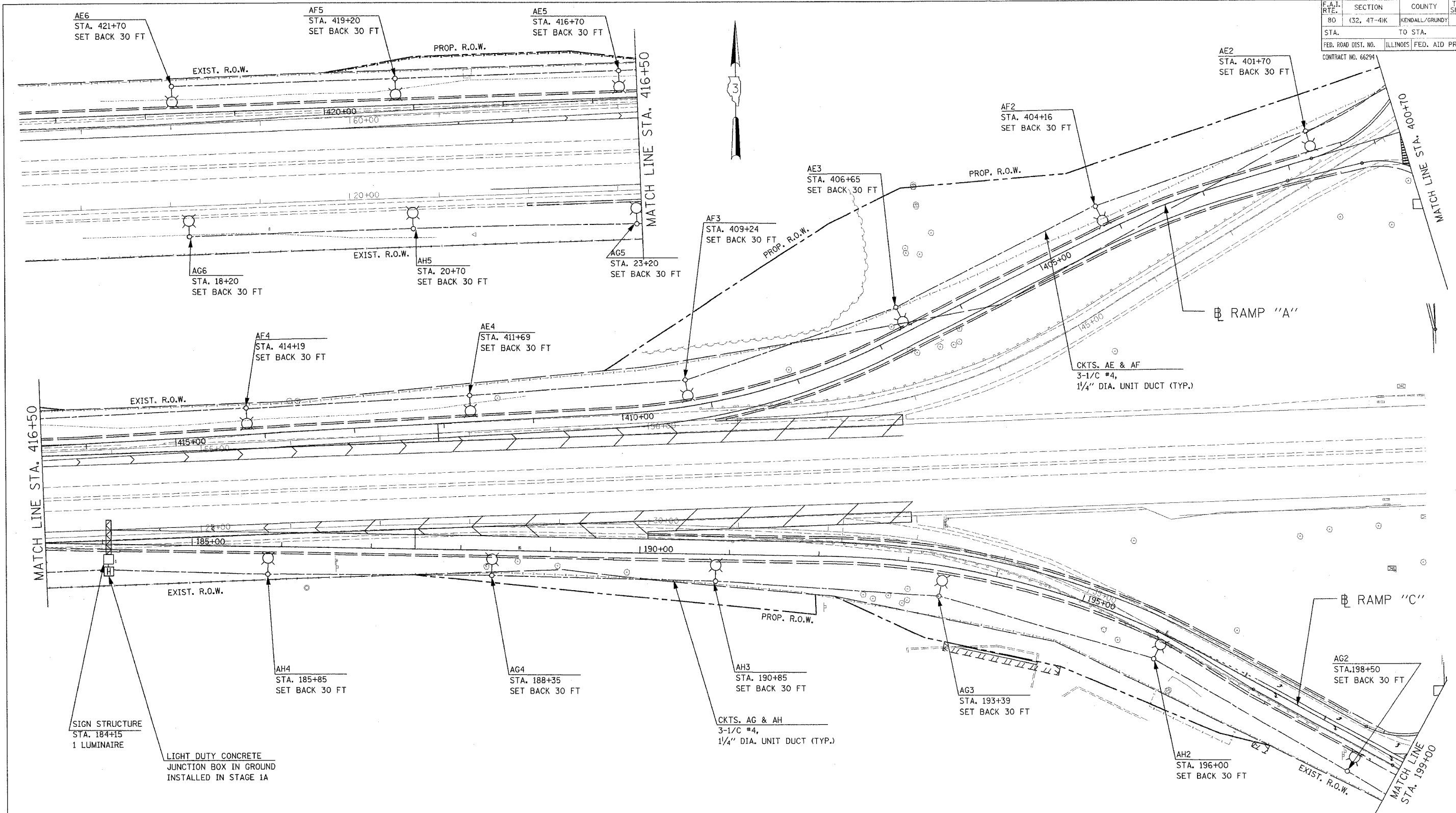


F.A.I. RTE.	SECTION	COUNTY	TOTAL SHEETS	SHEET NO.
80	(32, 47-4)K	KENDALL/GRUNDY	243	140
STA.	TO STA.			
FED. ROAD DIST. NO.	ILLINOIS	FED. AID PROJECT		
CONTRACT NO. 66294				



**NOTES:**

1. THE POLES SHALL BE KEPT OUT OF DITCH AREA AND PLACED AS FAR AS 40' IF NEEDED TO GET OUT OF FLOW LINE.
2. ALL LUMINAIRES SHALL BE INSTALLED AT A 35° TILT ANGLE.

REVISIONS	
NAME	DATE

ILLINOIS DEPARTMENT OF TRANSPORTATION  
 FAI ROUTE 80 (I-80 AT MINOOKA INTERCHANGE)  
 PROPOSED LIGHTING  
 RAMP "A" AND RAMP "C"  
 SHEET 1 OF 2

SCALE: 1:50  
 DATE: 2/10/06  
 DRAWN BY: KGP/MAE  
 CHECKED BY: MAE/PKG

**GO** GANDHI AND ASSOCIATES, INC.  
 ENGINEERS AND PLANNERS  
 6035 N. NORTHWEST HIGHWAY  
 SUITE 306  
 CHICAGO, ILLINOIS 60631 TEL: (773) 774-5900

**PATRICK**  
 ENGINEERING INC.  
 LISLE, ILLINOIS