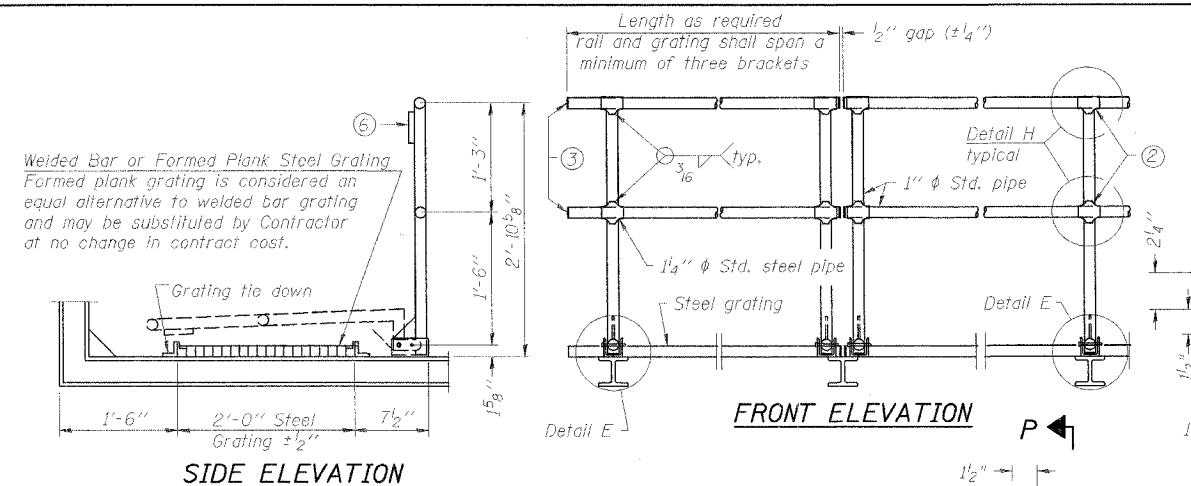


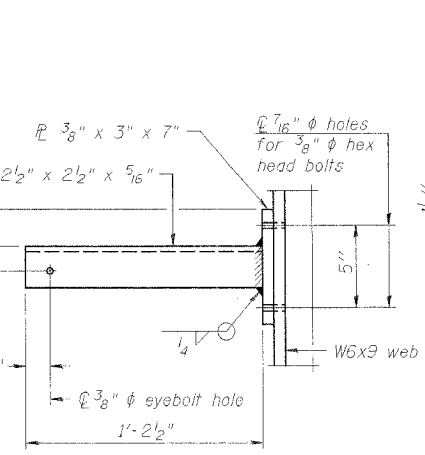
F.A.I. RTE.	SECTION	COUNTY	TOTAL SHEETS	SHEET NO.
80	(32, 47-4K)	KENDALL/GRUNDY	243	170
FED. ROAD DIST. NO.	ILLINOIS FED. AID PROJECT		CONTRACT NO. 66294	



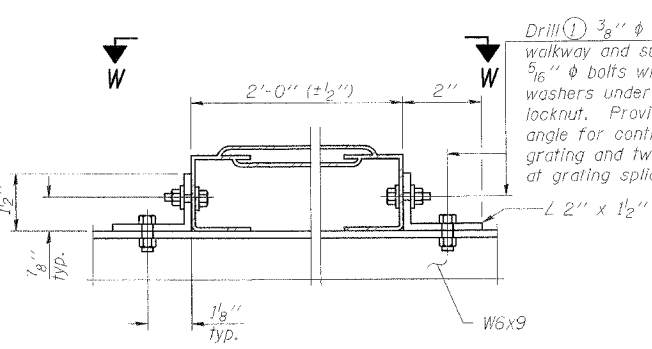
SIDE ELEVATION

FRONT ELEVATION

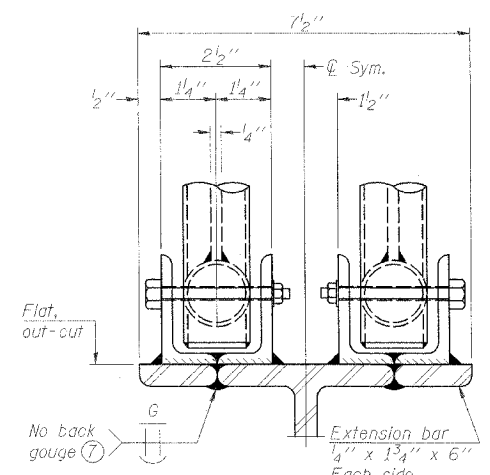
DETAIL D HANDRAIL



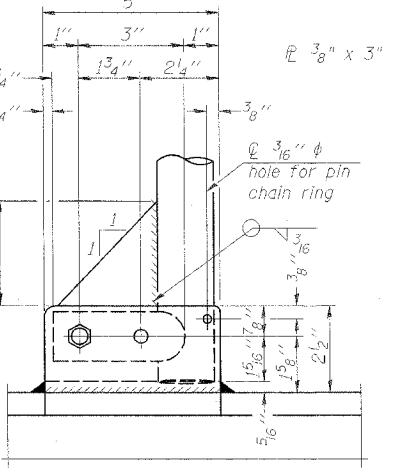
SECTION P-P



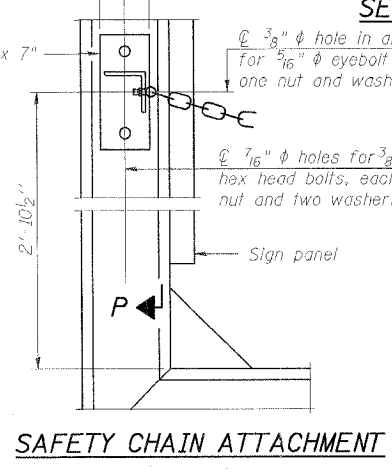
ALTERNATE FORMED PLANK GRATING DETAILS



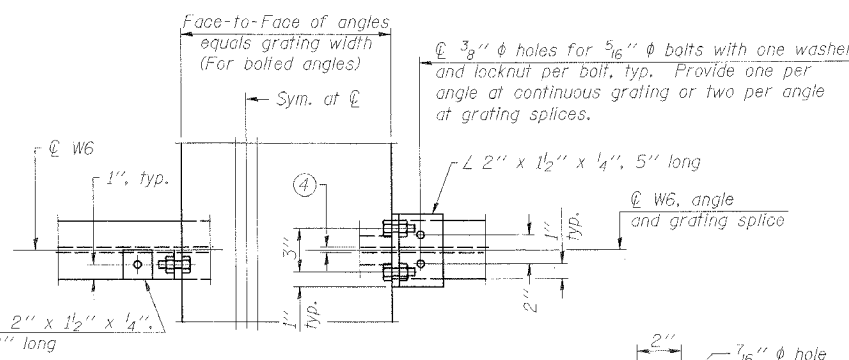
ELEVATION AT HANDRAIL JOINT



SIDE ELEVATION

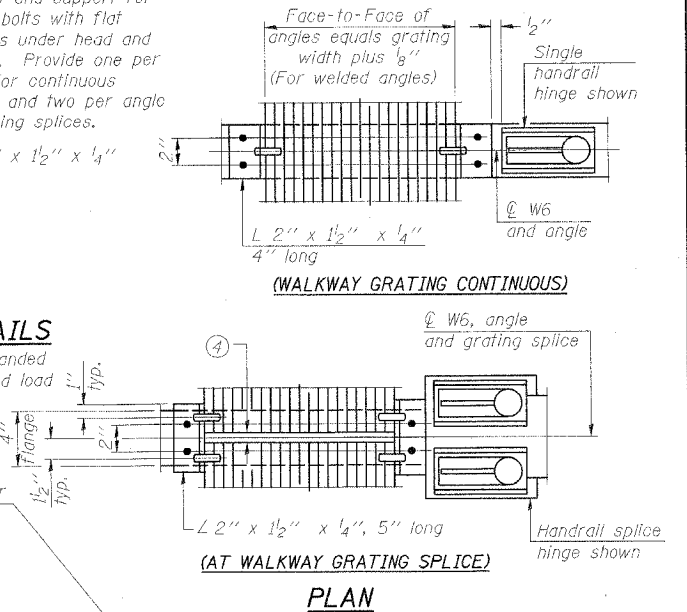


SAFETY CHAIN ATTACHMENT



GRATING CONTINUOUS AT GRATING SPLICE

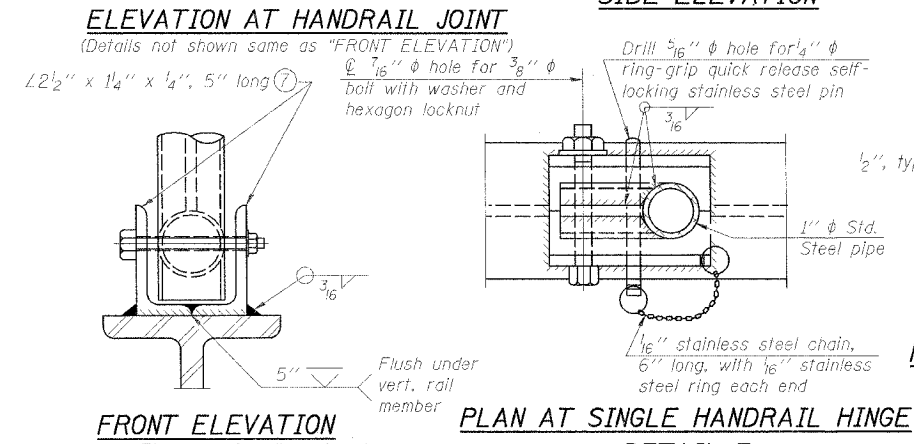
VIEW W-W



(WALKWAY GRATING CONTINUOUS)

(AT WALKWAY GRATING SPLICE)

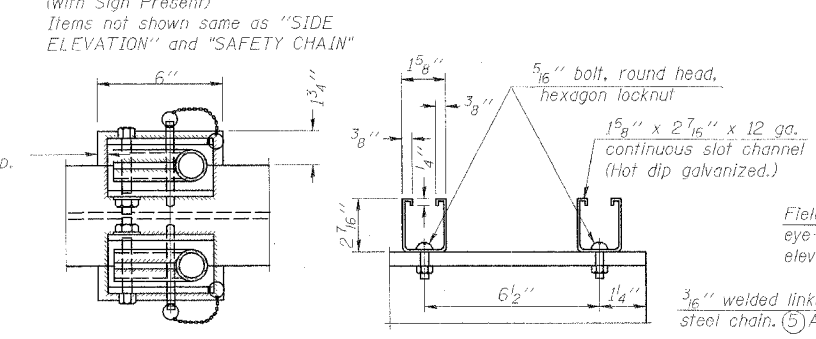
PLAN



FRONT ELEVATION

PLAN AT SINGLE HANDRAIL HINGE

DETAIL E

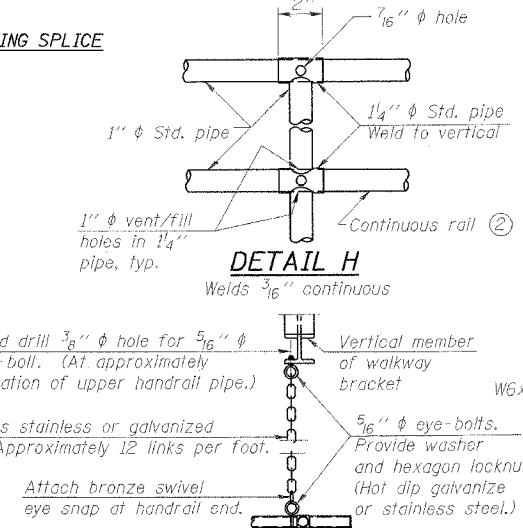


PLAN AT HANDRAIL JOINT

SECTION F-F LIGHTING FIXTURE MOUNTS

(If required)

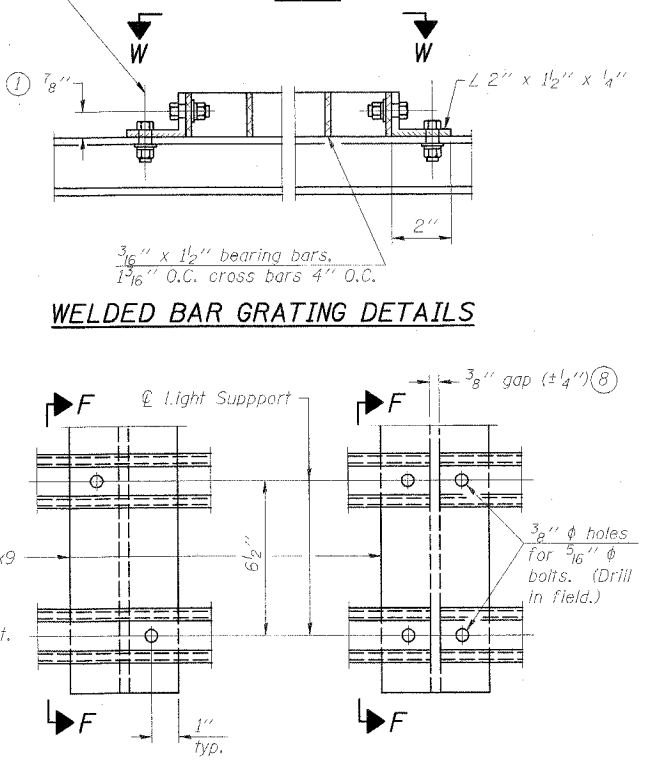
NOTES



DETAIL H

SAFETY CHAIN

One (1) required for each end of each walkway.



WELDED BAR GRATING DETAILS

DETAIL F

DETAIL G

- ① Drilling holes in grating may be done in shop or field, based on Contractor's preference and subject to accurate alignment. Field drilled holes must be touched up with galvanized paint.
- ② Horizontal rail member shall be continuous thru 1 1/4" pipe. Provide 7/16" hole in fitting for 3/8" bolt. Field drill 1/16" hole in horizontal rail member. Provide washer and locknut for bolt. *Use 5/16" eye bolts in 7/16" holes on top rail at ends only.*
- ③ Install standard force-fit end caps or weld 1/8" end plates with 1/8" c.f.w. and grind smooth. *All rail ends.*
- ④ 3/8" ***4" gap between grating panels at splice.
- ⑤ Chain to be hot dip galvanized after manufacture or stainless steel suitable for prolonged exterior exposure. Approximately 3'-6" long chain per location. Maximum sag with handrail erected = 4".
- ⑥ * 1/8" x 1/2" x 2" welded to handrail posts to protect locations that contact grating.
- ⑦ Extrusions may be used in lieu of details shown, with approval by Engineer.
- ⑧ Field cut ends of light support channels shall be free of burrs or hazardous projections and coated with zinc-rich primer or equivalent.

NUMBER	REVISION	DATE

REVISIONS	
NAME	DATE

ILLINOIS DEPARTMENT OF TRANSPORTATION
 FAI ROUTE 80
 (I-80 AT MINOOKA INTERCHANGE)

BRIDGE MOUNT SIGN STRUCTURE
 WALKWAY DETAILS

SCALE: None
 DATE: 2/10/06
 DRAWN BY: M. Tryon
 CHECKED BY: A. Yargocloju

BM-4
 1-7-05
PATRICK
 ENGINEERING INC.
 LISLE, ILLINOIS