

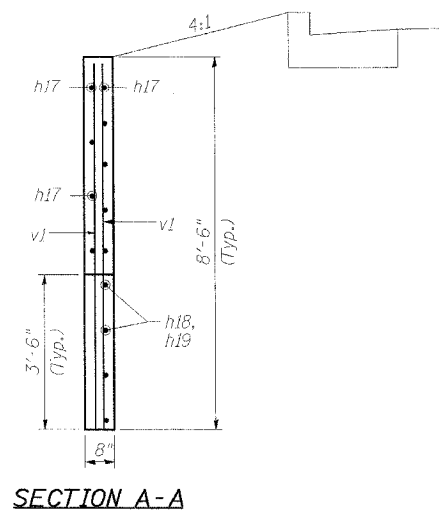
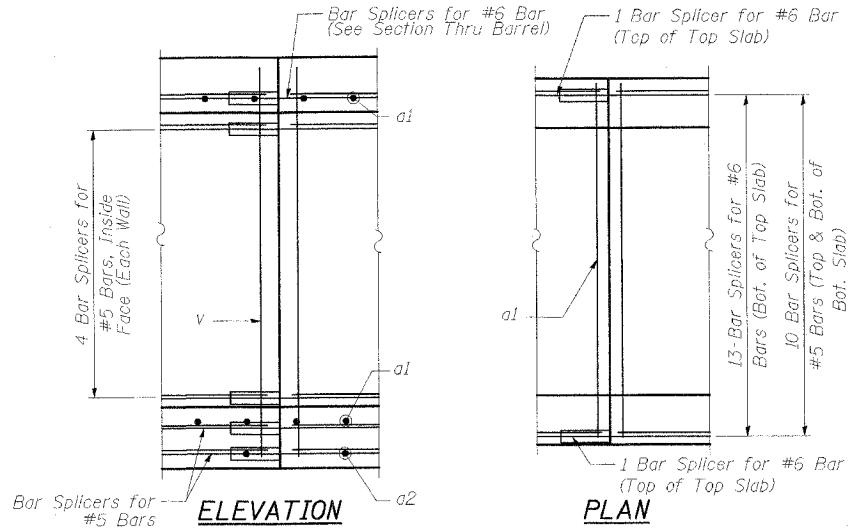
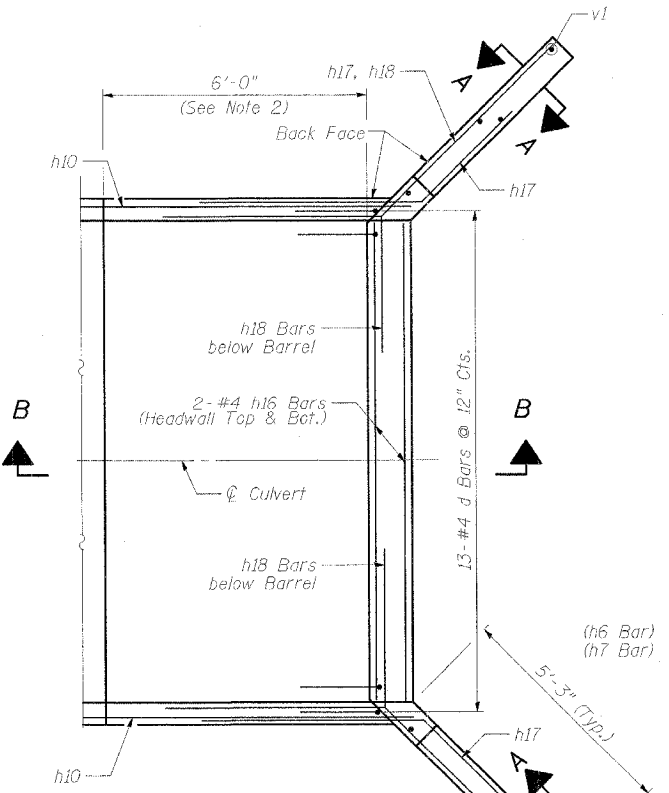
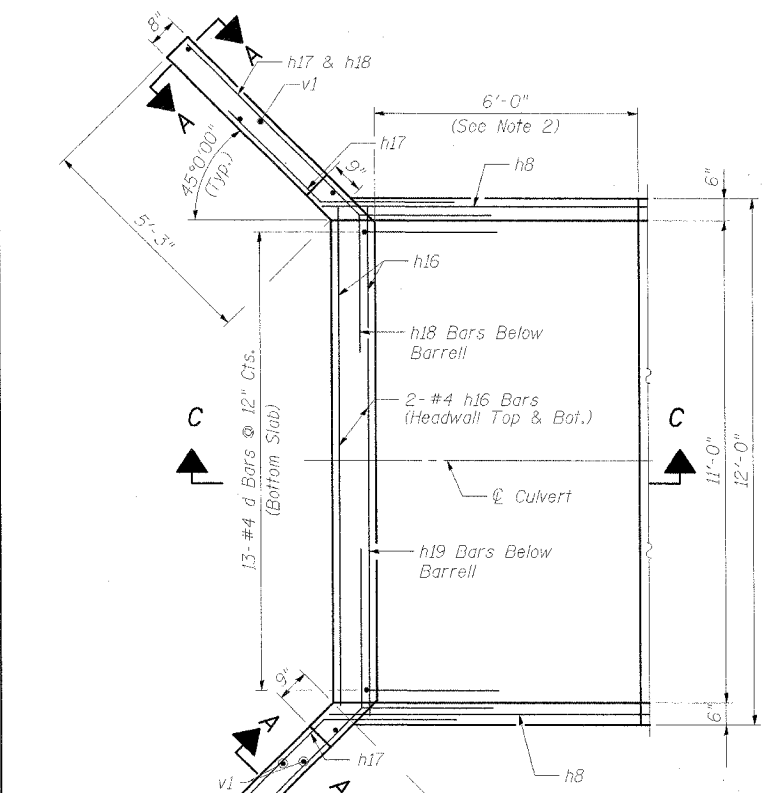
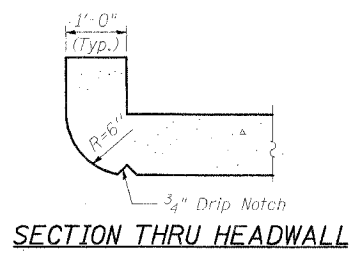
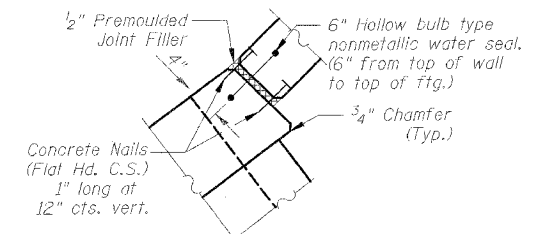
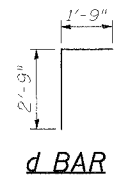
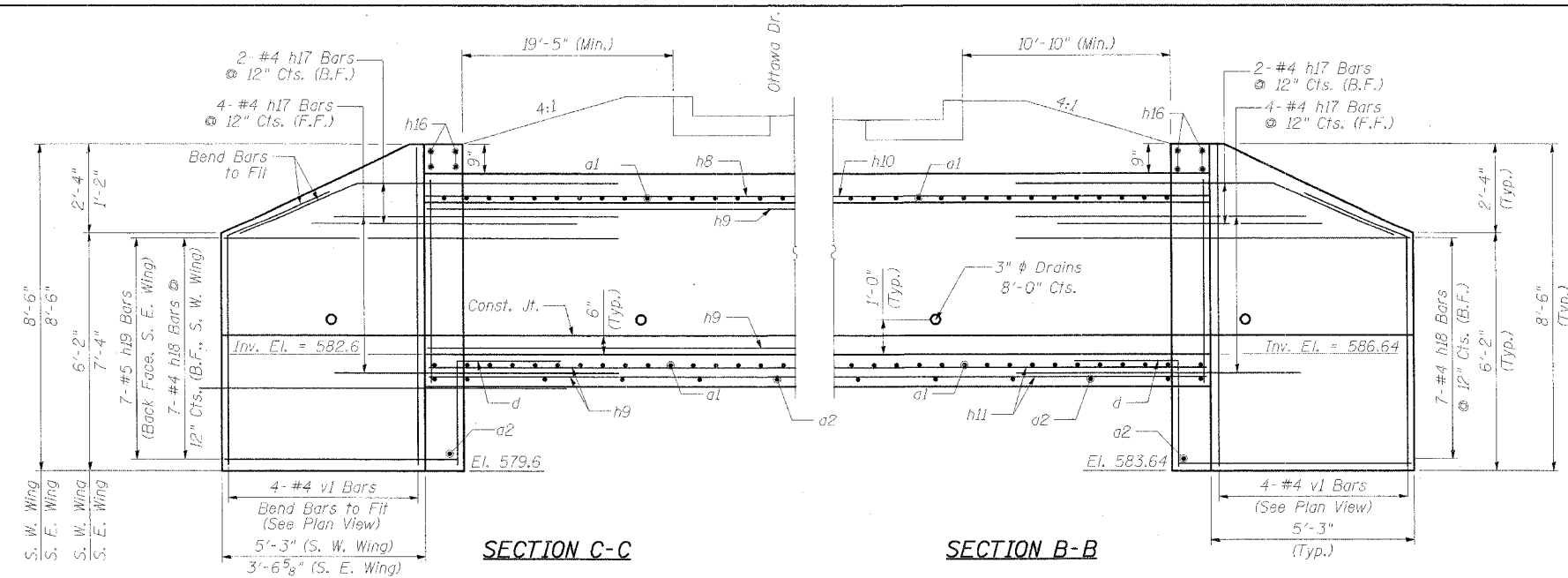
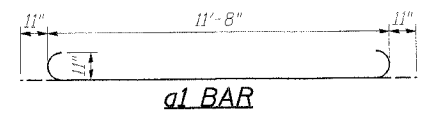
F.A.I. RTE.	SECTION	COUNTY	TOTAL SHEETS	SHEET NO.
80	(32, 47-4)K	KENDALL/GRUNDY	243	173
FED. ROAD DIST. NO.		ILLINOIS FED. AID PROJECT		
CONTRACT NO. 66294				

BILL OF MATERIAL

Bar	No.	Size	Length	Shape
a1	2,208	#8	13'-6"	
a2	282	#4	11'-3"	
d	26	#4	4'-6"	
d1	16	#5	2'-8"	
d2	8	#5	4'-3"	
h	168	#6	32'-6"	
h1	336	#5	32'-2"	
h2	14	#6	25'-5"	
h3	28	#5	25'-0"	
h4	14	#5	26'-0"	
h5	28	#5	26'-0"	
h6	14	#6	17'-4"	
h7	28	#5	16'-11"	
h8	28	#6	25'-2"	
h9	56	#5	24'-11"	
h10	28	#6	23'-0"	
h11	56	#5	28'-9"	
h12	14	#6	17'-9"	
h13	28	#5	17'-9"	
h14	14	#6	29'-4"	
h15	28	#5	29'-4"	
h16	8	#4	11'-8"	
h17	24	#4	8'-0"	
h18	21	#4	8'-1"	
h19	7	#4	6'-10"	
v	1,464	#4	5'-3"	
v1	16	#4	8'-2"	
Reinforcement Bars			Pound	118,100
Concrete Box Culverts			Cu. Yd.	484.7
Bar Splicers			Each	215

d1, d2, h2, h3, h6, h7, h17, h18, h19 BARS
(For 11'x4' Box Culvert)

Bar	A	B	C
d1	11"	1'-9"	7 $\frac{3}{4}$ "
d2	1'-8"	2'-7"	1'-2 $\frac{1}{8}$ "
h2	2'-7"	22'-10"	1'-11"
h3	2'-2"	22'-10"	1'-7 $\frac{1}{4}$ "
h6	2'-7"	14'-9"	2'-8 $\frac{3}{4}$ "
h7	2'-2"	14'-9"	2'-0 $\frac{3}{4}$ "
h17	3'-0"	5'-0"	2'-2 $\frac{1}{8}$ "
h18	3'-0"	5'-1"	2'-2 $\frac{1}{8}$ "
h19	3'-0"	3'-10"	2'-2 $\frac{1}{8}$ "



- NOTES:**
- All dimensions are in feet (ft) except as noted.
 - A distance of 6 ft of the barrel shall be poured monolithically with the horizontal cantilever wingwalls at each end.
 - Work this sheet with S-6 for Outlet Headwall Details.

PATRICK ENGINEERING INC.
LISLE, ILLINOIS

REVISIONS	
NAME	DATE

ILLINOIS DEPARTMENT OF TRANSPORTATION
FAI ROUTE 80
(I-80 AT MINOOKA INTERCHANGE)
CULVERT NO. 1
11' x 4' BOX CULVERT
DETAILS 1

SCALE: None
DATE: 2/10/06
DRAWN BY: M. Tryon
CHECKED BY: A. Yargicodlu