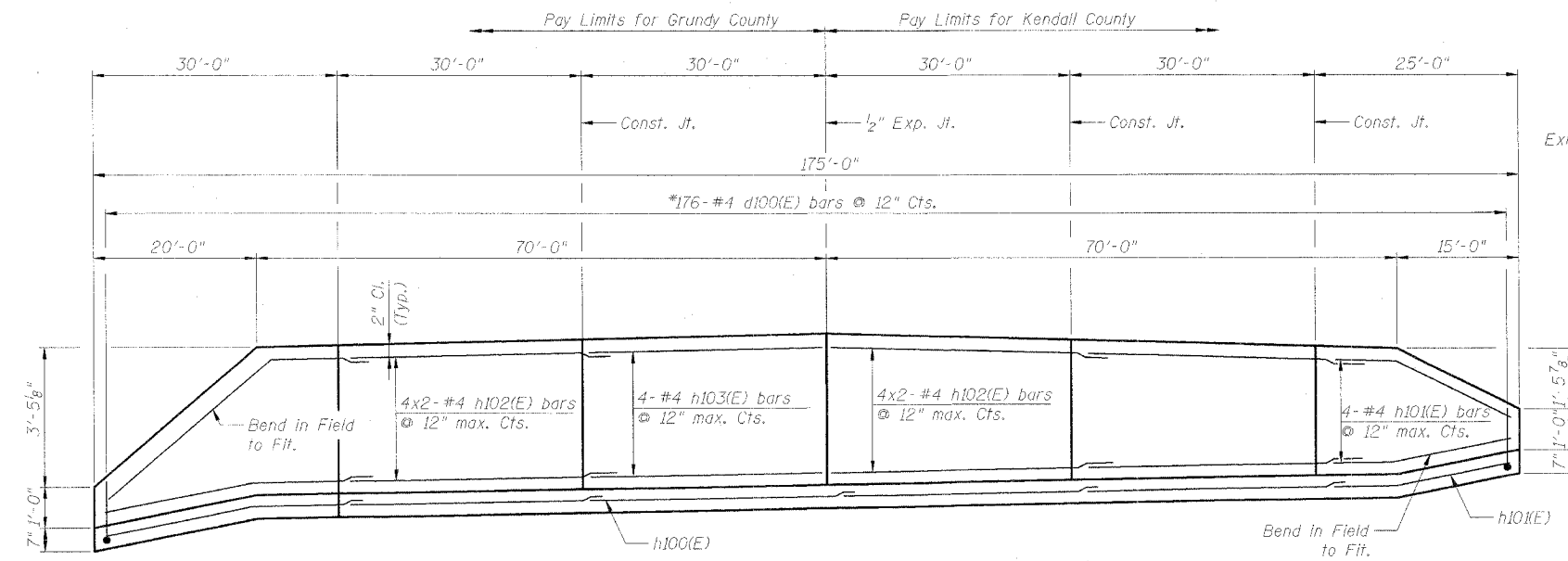
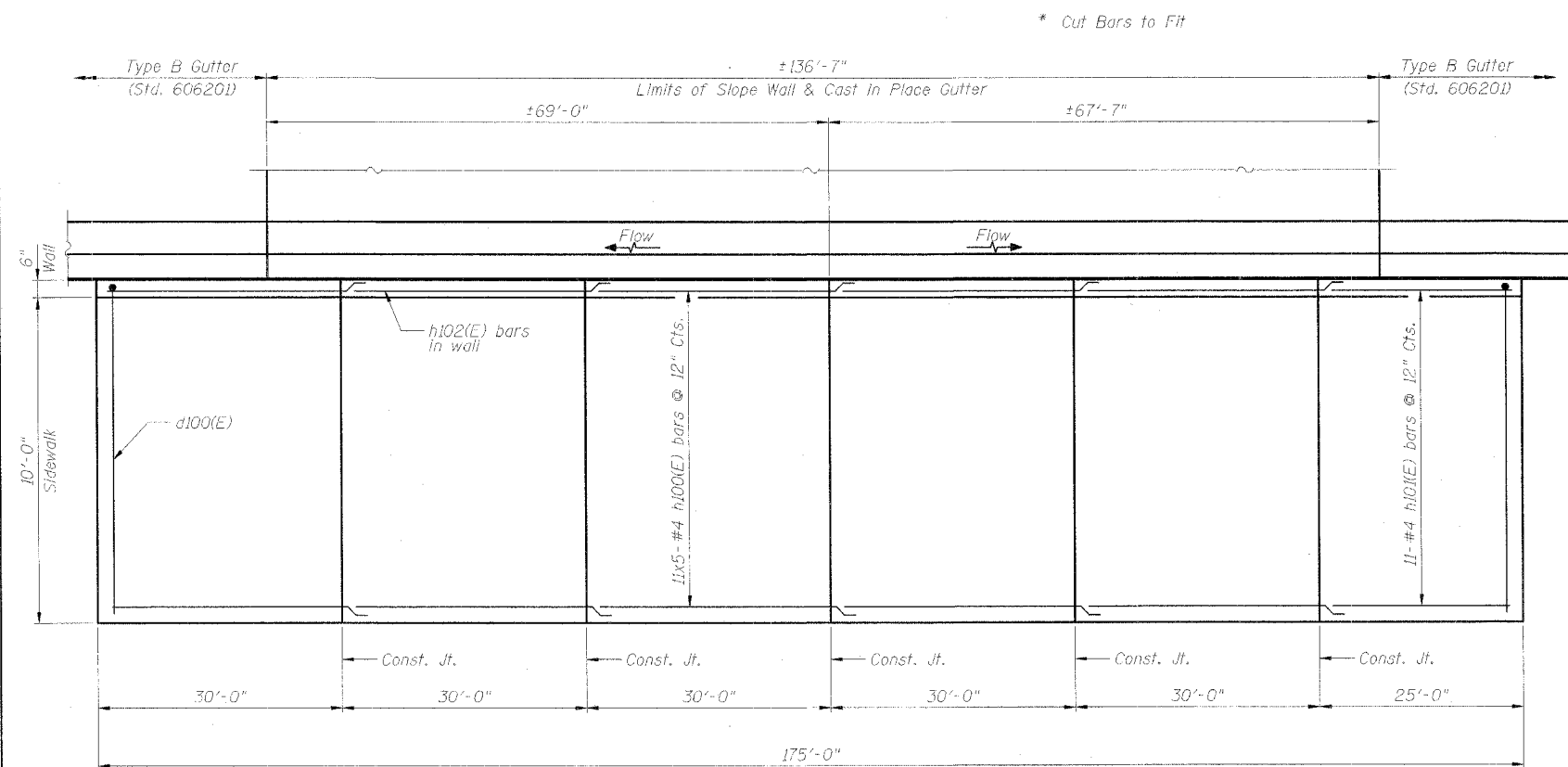


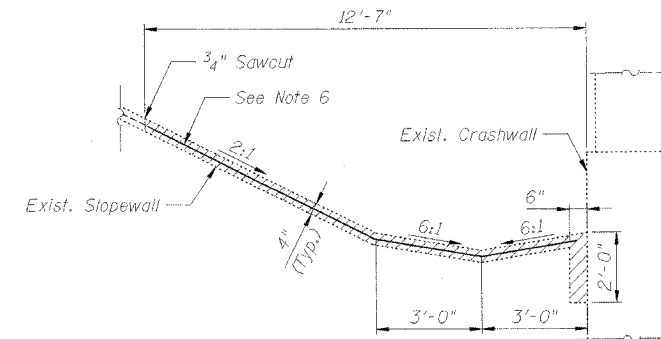
F.A.I. RTE.	SECTION	COUNTY	TOTAL SHEETS	SHEET NO.
80	(32, 47-4)K	KENDALL/GRUNDY	243	183
FED. ROAD DIST. NO.		ILLINOIS FED. AID PROJECT		
CONTRACT NO. 66294				



ELEVATION

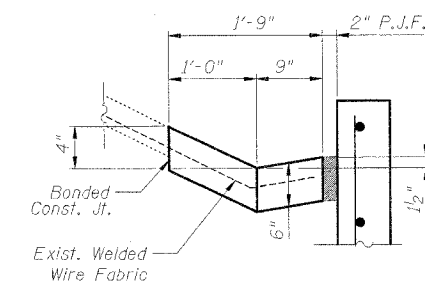


PLAN

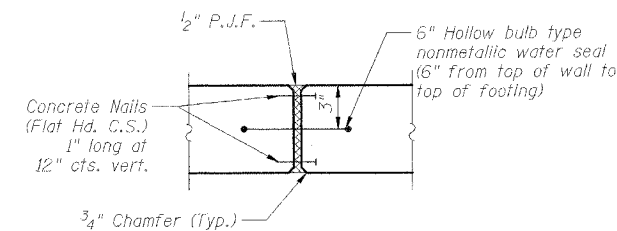


SLOPE WALL REMOVAL DETAIL

Concrete Removal



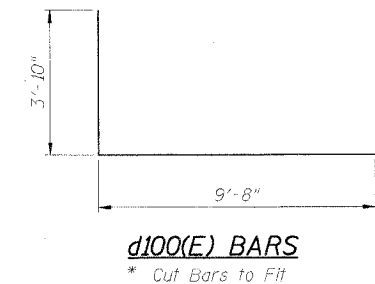
GUTTER DETAIL



EXPANSION JOINT DETAIL

BILL OF MATERIAL

Bar	No.	Size	Length	Shape
d100(E)	126	#4	14'-4"	—
h100(E)	55	#4	31'-4"	—
h10(E)	15	#4	24'-8"	—
h102(E)	16	#4	31'-11"	—
h103(E)	4	#4	29'-8"	—
Item	Unit	Quantity		
Porous Granular Embankment	Cu. Yd.	39		
Concrete Structures	Cu. Yd.	48.3		
Structure Excavation	Cu. Yd.	153		
Reinforcement Bars	Pound	3,410		
Slope Wall Removal	Sq. Yd.	204		
Concrete Gutter, Type B	Ft.	39		



d100(E) BARS

* Cut Bars to Fit

NOTES:

1. Bars designated (E) shall be epoxy coated.
2. Reinforcement Bars shall conform to the requirements of AASHTO M-31, or M-322, Grade 60.
3. Bars indicated thus 12x4-#5 etc. indicates 12 lines of bars with 4 lengths per line.
4. All Construction joints shall be bonded.
5. Work this sheet with W1 of W2.
6. Existing welded wire fabric shall be sand blasted clean and incorporated into new gutter construction. Cost shall be included with the cost of Slope Wall Removal.

REVISIONS	
NAME	DATE

ILLINOIS DEPARTMENT OF TRANSPORTATION
FAI ROUTE 80
(I-80 AT MINOOKA INTERCHANGE)

RETAINING WALL DETAILS

SCALE: None
DATE: 2/10/06
DRAWN BY: M. Tryon
CHECKED BY: A. Yargicoglu