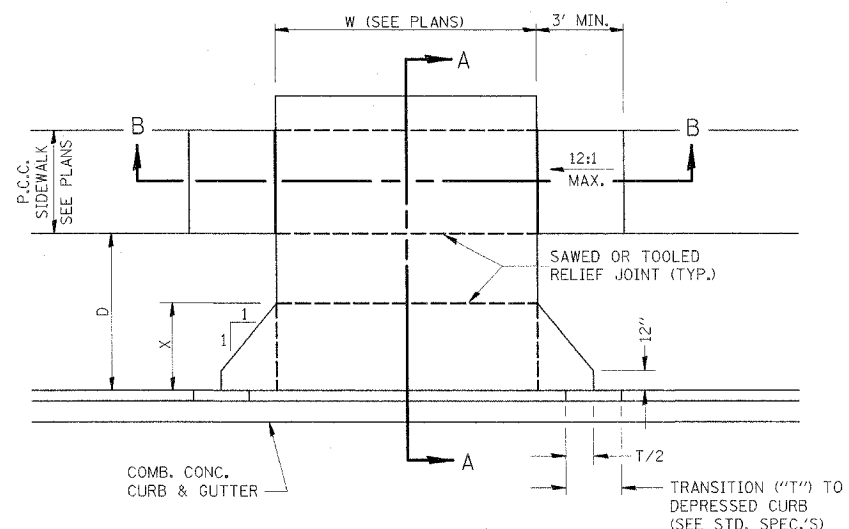
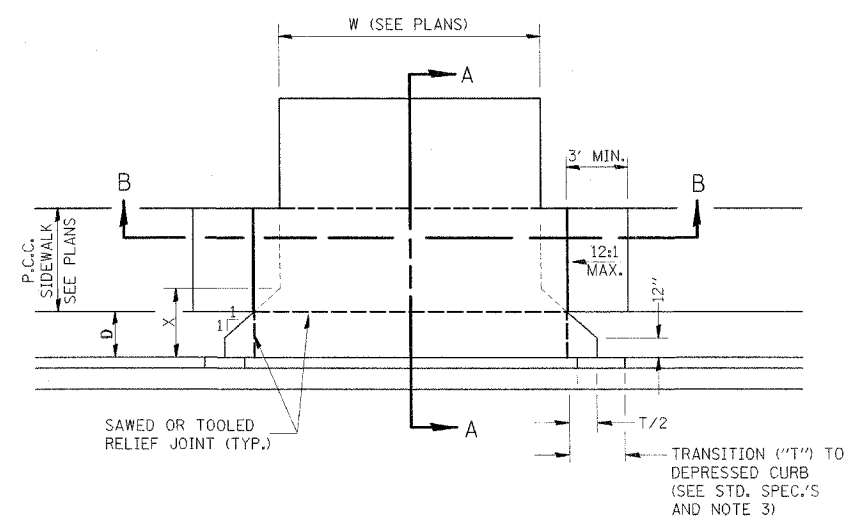


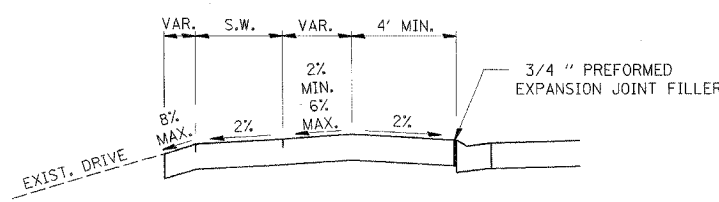
F.A.I. RTE.	SECTION	COUNTY	TOTAL SHEETS	SHEET NO.
80	(32, 47-4)K	KENDALL/GRUNDY	243	191
STA.		TO STA.		
FED. ROAD DIST. NO.		ILLINOIS FED. AID PROJECT		
CONTRACT NO. 66294				



CASE I (D ≥ X)

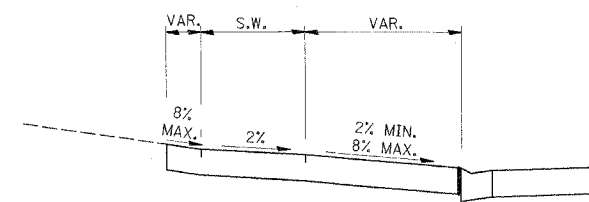


CASE I (D < X)

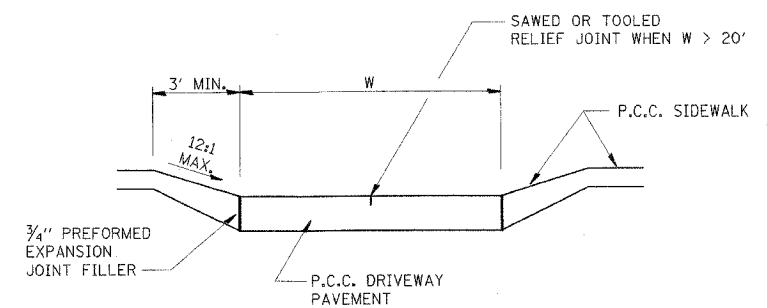


DEPRESSED ENTRANCE*
SECTION A-A

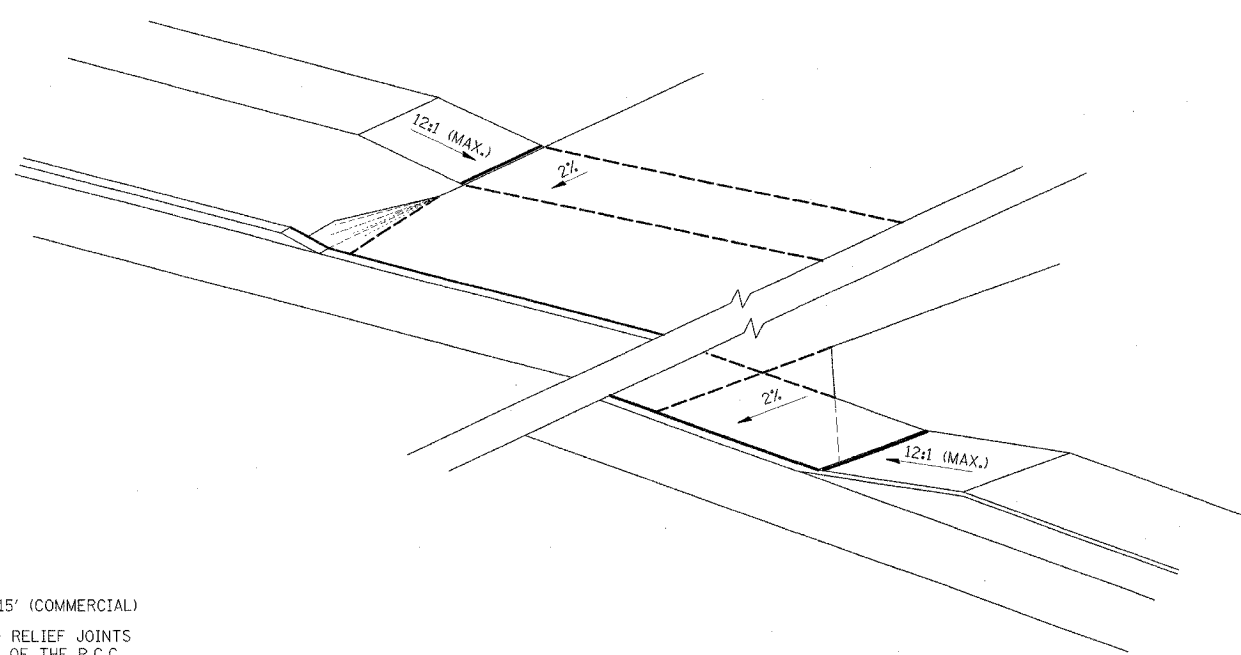
*(SEE X-SECTIONS FOR ENTRANCE PROFILE.)



ELEVATED ENTRANCE*
SECTION A-A



SECTION B-B



- GENERAL NOTES:
- X = 7' (NON-COMMERCIAL) X = 15' (COMMERCIAL)
 - COST OF EXPANSION JOINTS AND RELIEF JOINTS SHALL BE INCLUDED IN THE COST OF THE P.C.C. DRIVEWAY PAVEMENT.
 - AS THE DIMENSION "D" APPROACHES ZERO, THE TRANSITION TO DEPRESSED CURB SHALL BE NO STEEPER THAN 12:1

PCC URBAN ENTRANCES

423-1

REVISIONS		ILLINOIS DEPARTMENT OF TRANSPORTATION FAI ROUTE 80 (I-80 AT MINOOKA INTERCHANGE) DRIVEWAY DETAILS
NAME	DATE	

SCALE: NONE
DATE: 2/10/06
DRAWN BY: TCK
CHECKED BY: JJC

DEC. 2000
DETAILS\600699.DGN
6/1/01