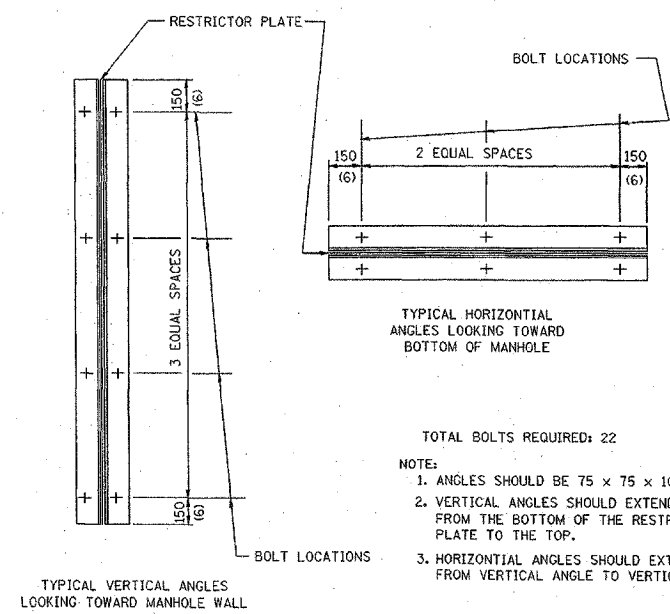
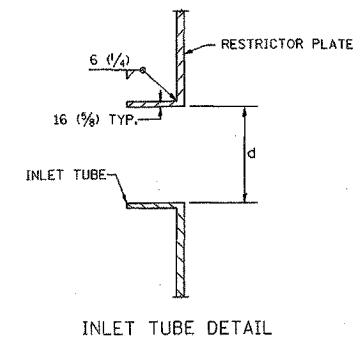


- NOTES:
1. ALL STEEL ANGLES AND PLATES TO BE GALVANIZED AFTER FABRICATION.
 2. ALL RESTRICTOR PLATES, ANGLES AND HARDWARE TO BE INCLUDED IN THE COST OF THE MANHOLE.
 3. BASIS OF PAYMENT: "MANHOLES, TYPE A, 1.8m (6FT.)-DIAMETER, TYPE 1 FRAME, CLOSED LID, RESTRICTOR PLATE" EACH



- TOTAL BOLTS REQUIRED: 22
- NOTE:
1. ANGLES SHOULD BE 75 x 75 x 10 (3x3x3/8)
 2. VERTICAL ANGLES SHOULD EXTEND FROM THE BOTTOM OF THE RESTRICTOR PLATE TO THE TOP.
 3. HORIZONTAL ANGLES SHOULD EXTEND FROM VERTICAL ANGLE TO VERTICAL ANGLE.

| RESTRICTOR TYPE | | | | | |
|-----------------------|-------------|---------------------|--------------------|--------------------|---------|
| 1 | 2 | 3 | 4 | 5 | 6 |
| RE-ENFRANT TUBE | SHARP EDGED | SQUARE EDGED | RE-ENFRANT TUBE | SQUARE EDGED | ROUNDED |
| | | | | | |
| LENGTH: 1/2 TO 1 DIA. | | STREAM CLEARS SIDES | LENGTH: 2-1/2 DIA. | LENGTH: 2-1/2 DIA. | |
| C=.52 | C=.61 | C=.61 | C=.73 | C=.82 | C=.98 |

VALUES OF "C" FOR CIRCULAR AND SQUARE ORIFICES

ALL DIMENSIONS ARE IN MILLIMETERS (INCHES) UNLESS OTHERWISE SHOWN.

| REVISIONS | |
|-----------|------|
| NAME | DATE |
| | |
| | |
| | |
| | |
| | |
| | |
| | |
| | |
| | |

ILLINOIS DEPARTMENT OF TRANSPORTATION
FAI ROUTE 80 (I-80 AT MINOOKA INTERCHANGE)

MANHOLE WITH RESTRICTOR PLATE

SCALE: NONE
DATE: 2/10/06

DRAWN BY: TCK
CHECKED BY: JJC