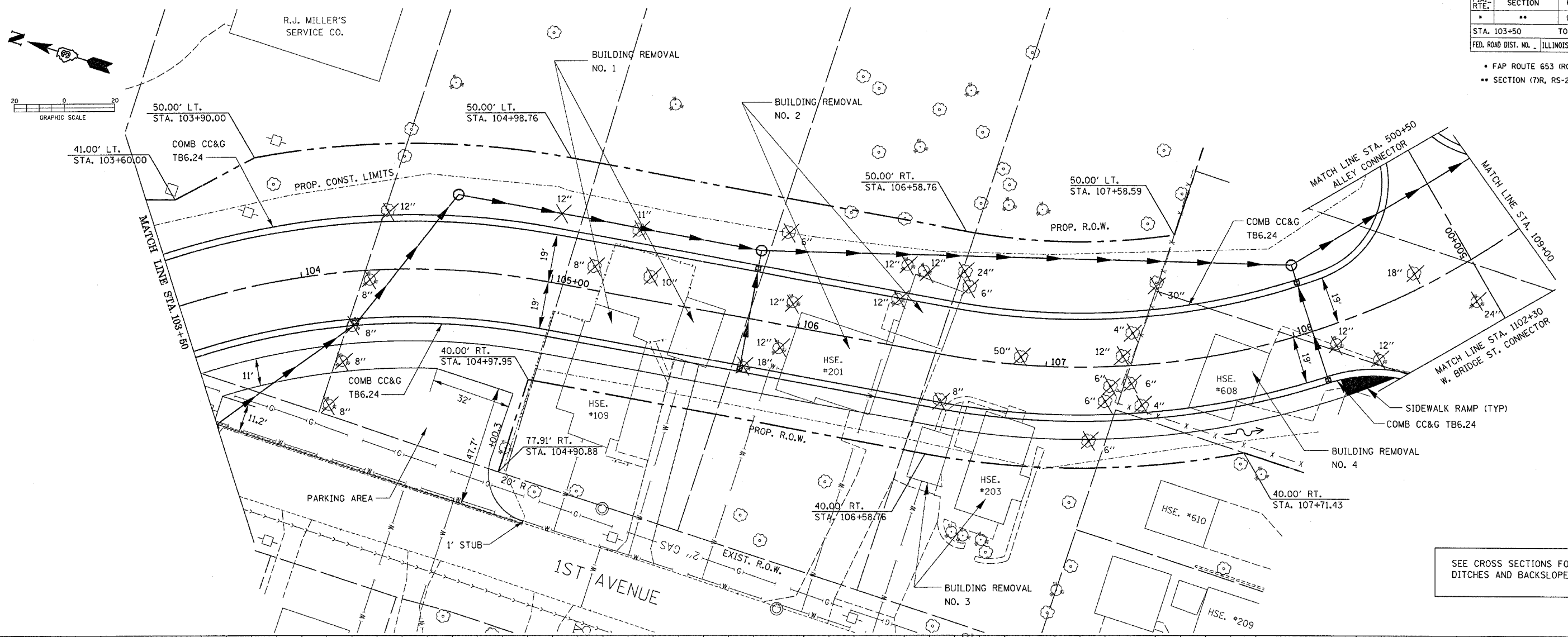
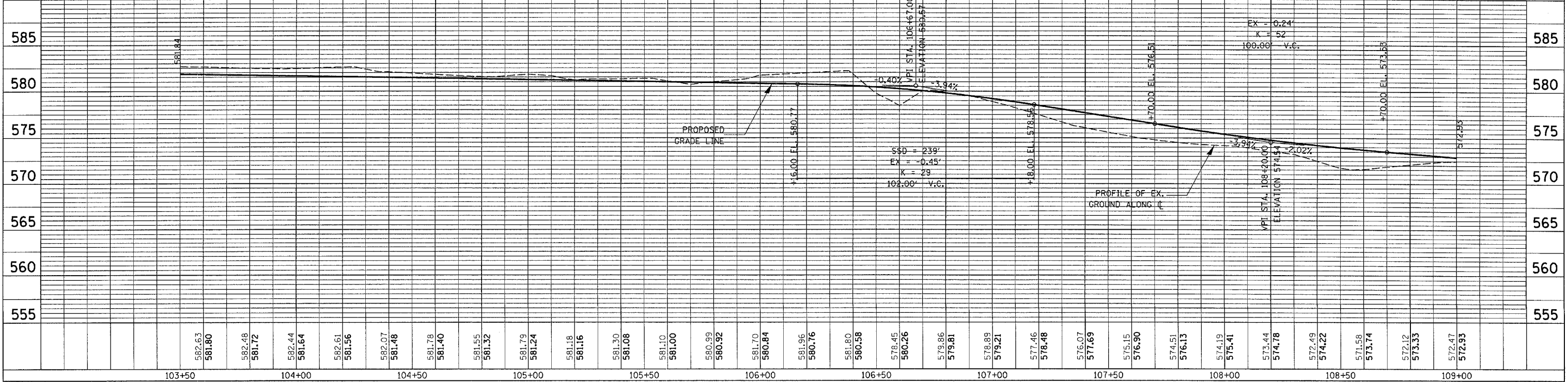


F.A. RTE.	SECTION	COUNTY	TOTAL SHEETS	SHEET NO.
*	**	LASALLE	95	30
STA. 103+50		TO STA. 109+00		
FED. ROAD DIST. NO. _		ILLINOIS FED. AID PROJECT		

- * FAP ROUTE 653 (ROUTE 18 COUPLE)
- ** SECTION (7)R, RS-2; (8)R, RS-1



SEE CROSS SECTIONS FOR SPECIAL DITCHES AND BACKSLOPES.



PLAN & PROFILE SHEET FOR WEST MAINLINE-STA. 103+50 TO STA. 109+00

PLAN	DATE
SURVEYED	
DESIGNED	
CHECKED	
BY	
NOTE BOOK	
RT. OF WAY CHECKED	
PAID FILE NAME	
NO.	

PROFILE	DATE
SURVEYED	
DESIGNED	
CHECKED	
BY	
NOTE BOOK	
S.M. NOTED	
STRUCTURE NOTATIONS OK'D	
NO.	