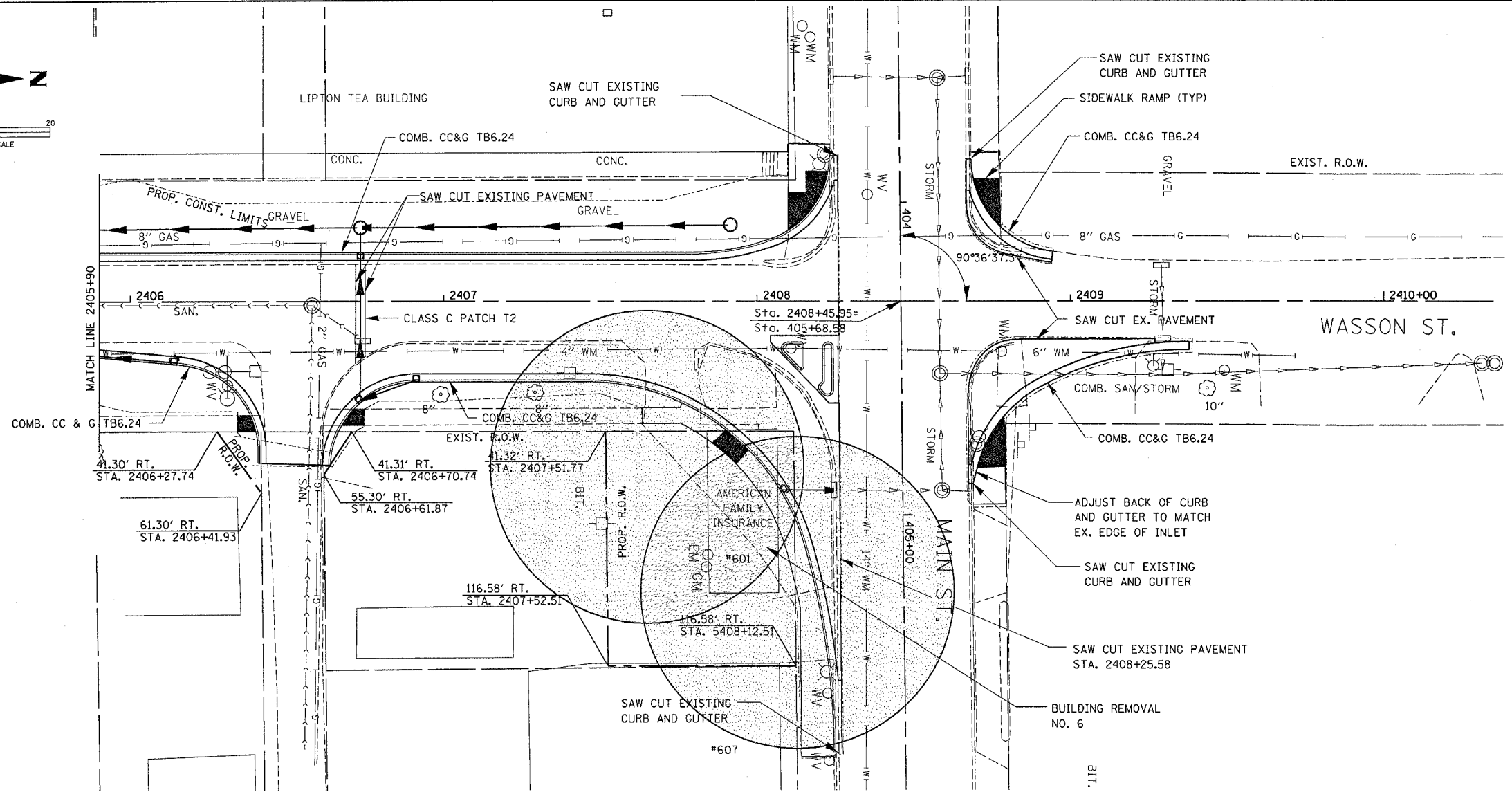
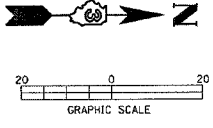


F.A. RTE.	SECTION	COUNTY	TOTAL SHEETS	SHEET NO.
*	**	LASALLE	95	34
STA. 2405+90 TO STA. 2409+37.95				
FED. ROAD DIST. NO. ILLINOIS FED. AID PROJECT				

* FAP ROUTE 653 (ROUTE 18 COUPLE)
 ** SECTION (7)R, RS-2; (8)R, RS-1



NON SPECIAL WASTE, NO GRADING, NO EXCAVATION

TBM-D ELEV = 624.38: TOP BOLT ON FIRE HYDRANT ON EAST SIDE OF WASSON ST. AND SOUTH SIDE OF ALLEY WHICH IS APPROXIMATELY HALFWAY BETWEEN E. BRIDGE AND E. MAIN ST.

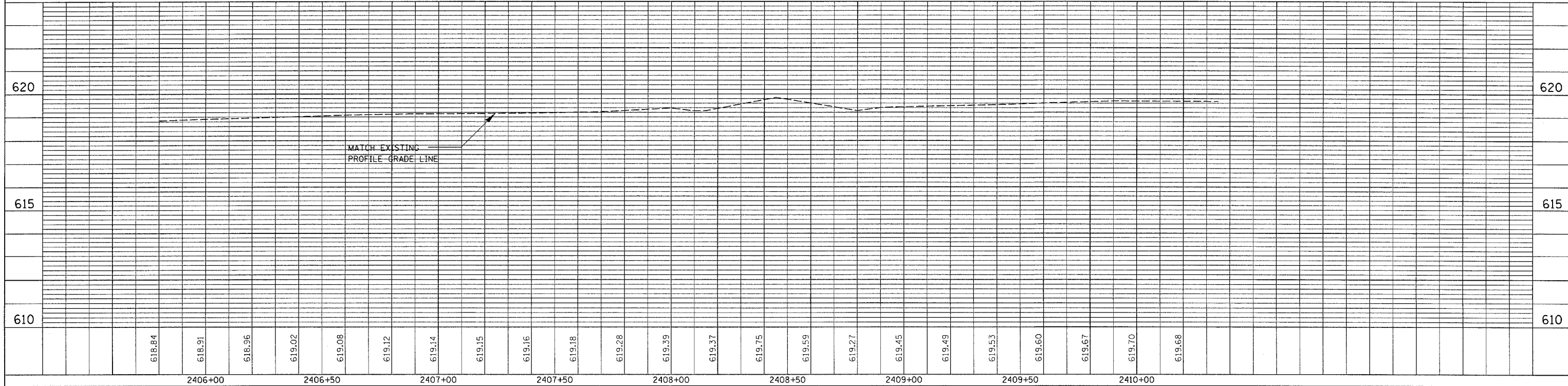
TBM-E ELEV = 625.09: SET CHISELED "X" ON BOTTOM STEP OF LOADING DOCK AT N.E. CORNER OF OLD LIPTON PLANT S.W. CORNER OF E. MAIN ST. AND WASSON ST.

TBM-F ELEV = 626.51: BOLT IN WORD "MUELLER" ON FIRE HYDRANT ON SOUTH SIDE OF E. MAIN ST. AND HALFWAY BETWEEN WASSON ST. AND EVERETT ST.

1:10(V) SCALE = PROFILE

PLAN	SURVEYED	DATE
	PLOTTED	
	NOTED	
	BY	
	NO. OF SHEETS	
	DATE	
	BY	
	NO. OF SHEETS	
	DATE	

PROFILE	SURVEYED	DATE
	PLOTTED	
	NOTED	
	BY	
	NO. OF SHEETS	
	DATE	
	BY	
	NO. OF SHEETS	
	DATE	



PLAN & PROFILE SHEET FOR WASSON ST. - STA. 2405 + 90 TO STA. 2409 + 37.95