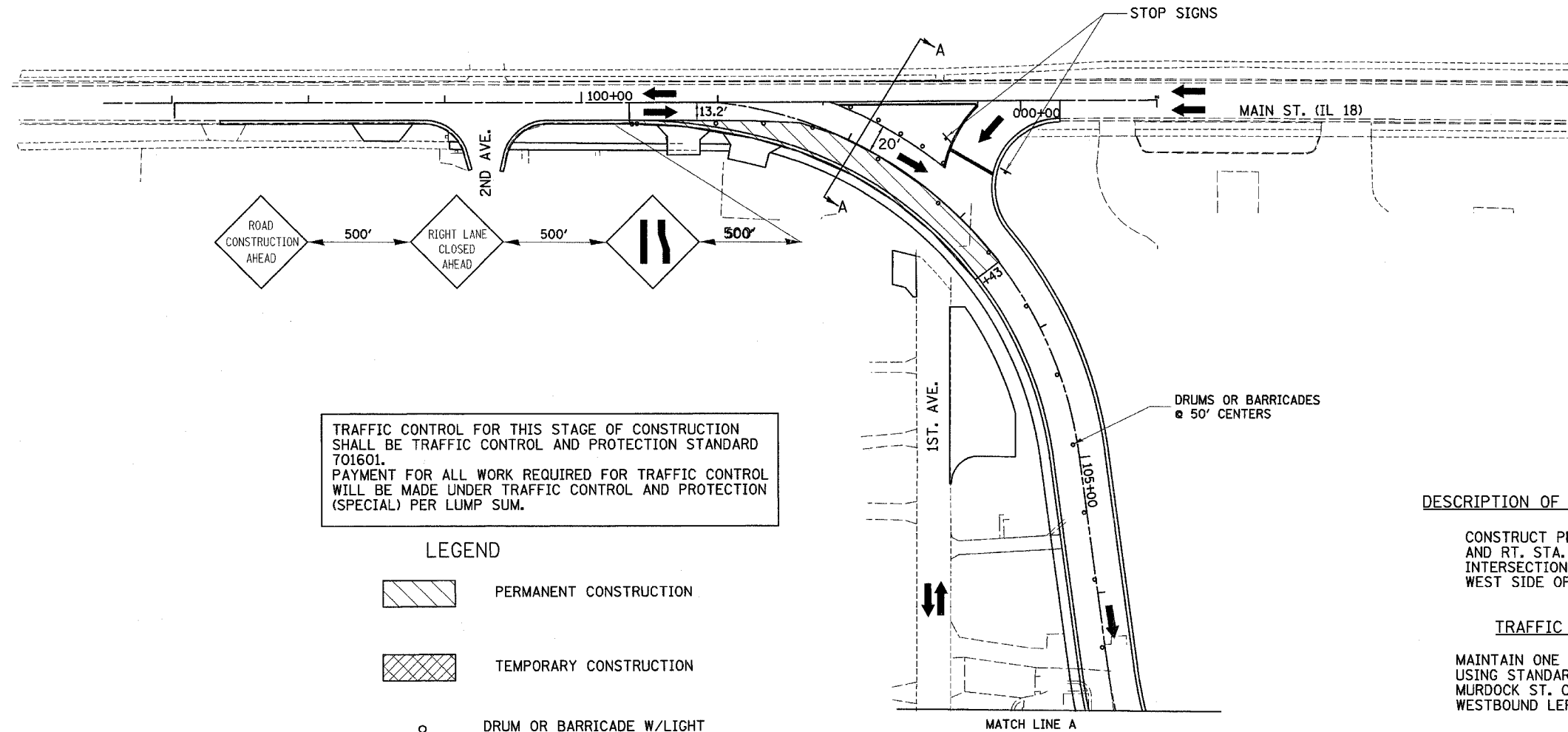
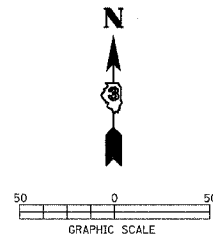


F.A. RTE.	SECTION	COUNTY	TOTAL SHEETS	SHEET NO.
*	**	LASALLE	95	39
STA.		TO STA.		
FED. ROAD DIST. NO.		ILLINOIS	FED. AID PROJECT	
<ul style="list-style-type: none"> * FAP ROUTE 653 (ROUTE 18 COUPLE) ** SECTION (7)R, RS-2; (8)R, RS-1 				



TRAFFIC CONTROL FOR THIS STAGE OF CONSTRUCTION SHALL BE TRAFFIC CONTROL AND PROTECTION STANDARD 701601. PAYMENT FOR ALL WORK REQUIRED FOR TRAFFIC CONTROL WILL BE MADE UNDER TRAFFIC CONTROL AND PROTECTION (SPECIAL) PER LUMP SUM.

LEGEND

- PERMANENT CONSTRUCTION
- TEMPORARY CONSTRUCTION
- DRUM OR BARRICADE W/LIGHT
- TRAFFIC FLOW ARROW

DESCRIPTION OF WORK TO BE COMPLETED (STAGE 3, PHASE 1)

CONSTRUCT PERMANENT PAVING RT. STA. 100+35 - 103+43 AND RT. STA. 109+42 - 110+85. INCLUDING MURDOCK STREET INTERSECTION. ALSO CONSTRUCT DRIVES AND SIDEWALK ALONG WEST SIDE OF MURDOCK STREET.

TRAFFIC CONTROL (STAGE 3, PHASE 1)

MAINTAIN ONE LANE EASTBOUND ON NEWLY CONSTRUCTED CONNECTOR USING STANDARD 701601
 MURDOCK ST. CLOSED AT BRIDGE ST. FOR MAXIMUM THREE WEEKS
 WESTBOUND LEFT TURNS PERMITTED AT MAIN ST. & NEW CONNECTOR

**SEC A-A
STAGE 3 PHASE 1
TYPICAL SECTION**

