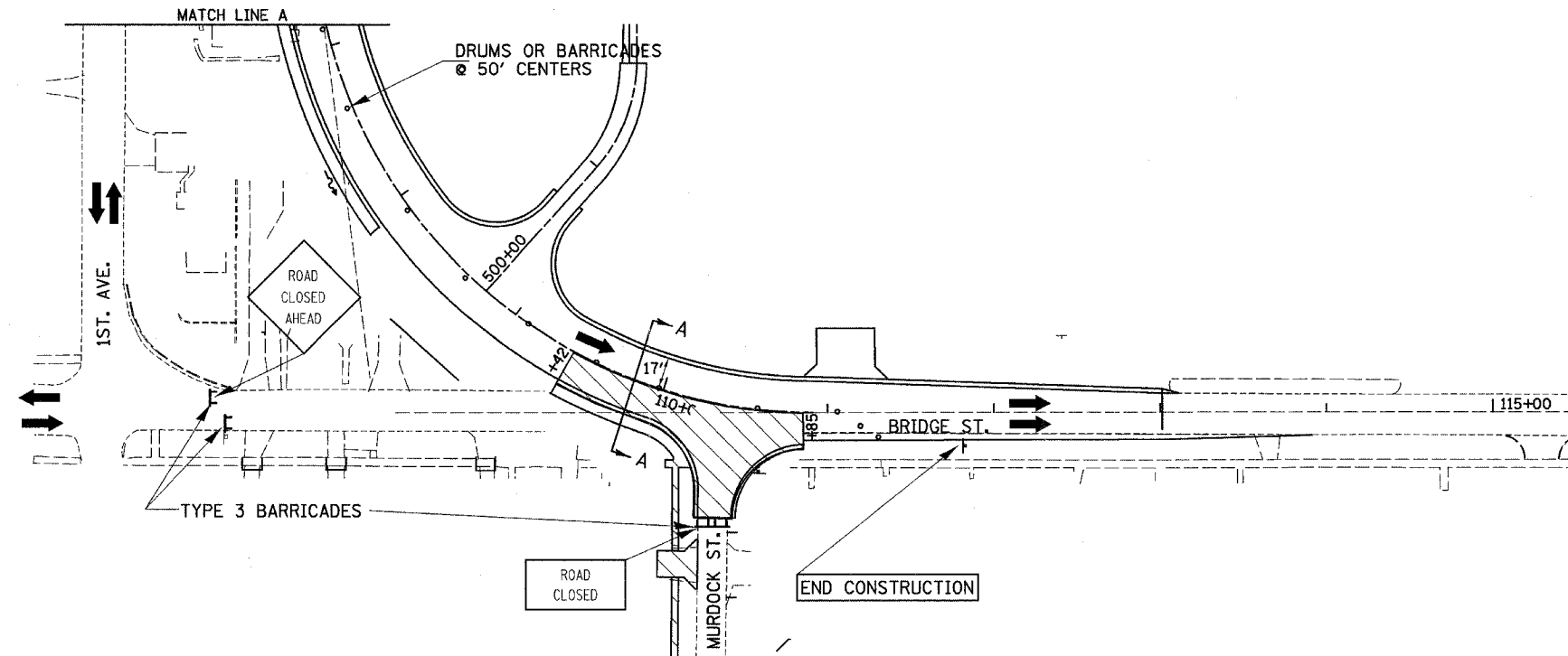
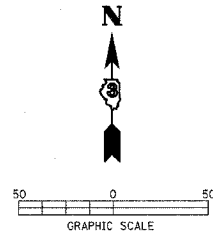
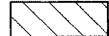





F.A. RTE.	SECTION	COUNTY	TOTAL SHEETS	SHEET NO.
•	••	LASALLE	95	40
STA.		TO STA.		
FED. ROAD DIST. NO.		ILLINOIS FED. AID PROJECT		
• FAP ROUTE 653 (ROUTE 18 COUPLE)				
•• SECTION (7)R, RS-2; (8)R, RS-1				



LEGEND

-  PERMANENT CONSTRUCTION
-  TEMPORARY CONSTRUCTION
-  DRUM OR BARRICADE W/LIGHT
-  TRAFFIC FLOW ARROW

