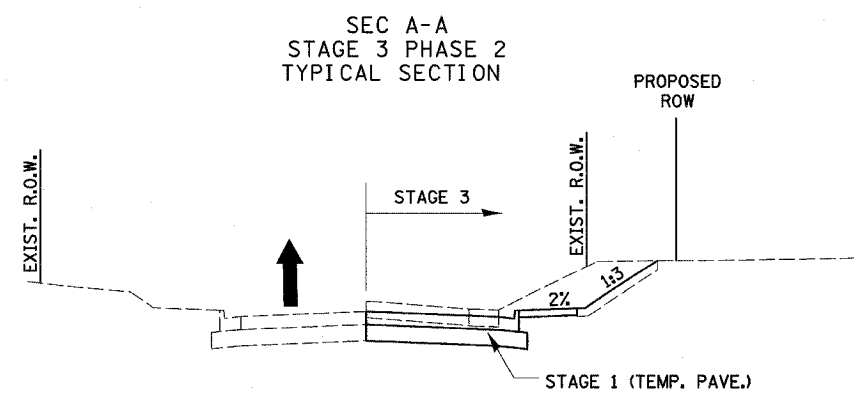
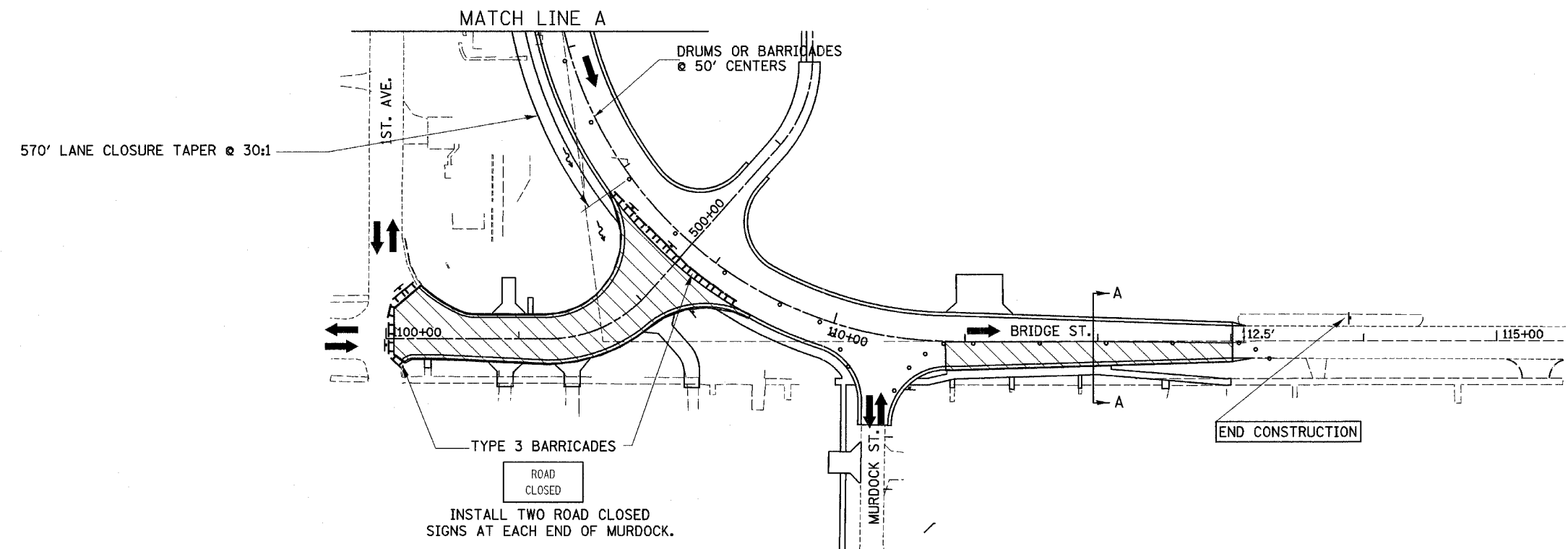
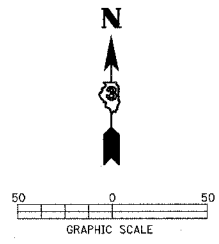


F.A. RTE.	SECTION	COUNTY	TOTAL SHEETS	SHEET NO.
*	**	LASALLE	95	42
STA.		TO STA.		
FED. ROAD DIST. NO.		ILLINOIS FED. AID PROJECT		
<ul style="list-style-type: none"> * FAP ROUTE 653 (ROUTE 18 COUPLE) ** SECTION (7)R, RS-2; (8)R, RS-1 				



- LEGEND**
- PERMANENT CONSTRUCTION
 - TEMPORARY CONSTRUCTION
 - DRUM OR BARRICADE W/LIGHT
 - TRAFFIC FLOW ARROW