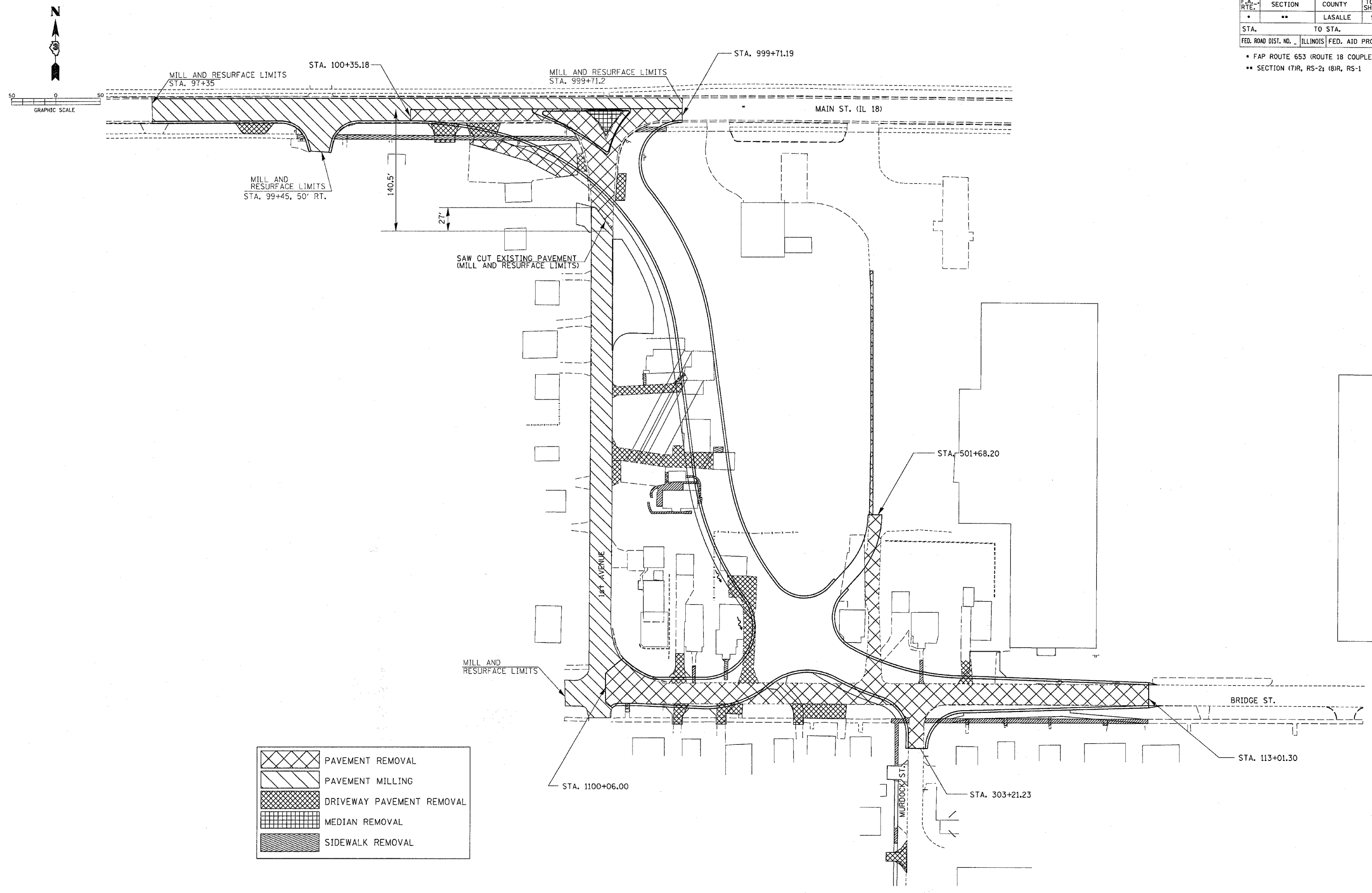


F.A. RTE.	SECTION	COUNTY	TOTAL SHEETS	SHEET NO.
•	••	LASALLE	95	46
STA.	TO STA.			
FED. ROAD DIST. NO.	ILLINOIS	FED. AID PROJECT		
<ul style="list-style-type: none"> • FAP ROUTE 653 (ROUTE 18 COUPLE) •• SECTION (7)R, RS-2; (8)R, RS-1 				



PAVEMENT REMOVAL PLAN – WEST ALIGNMENT