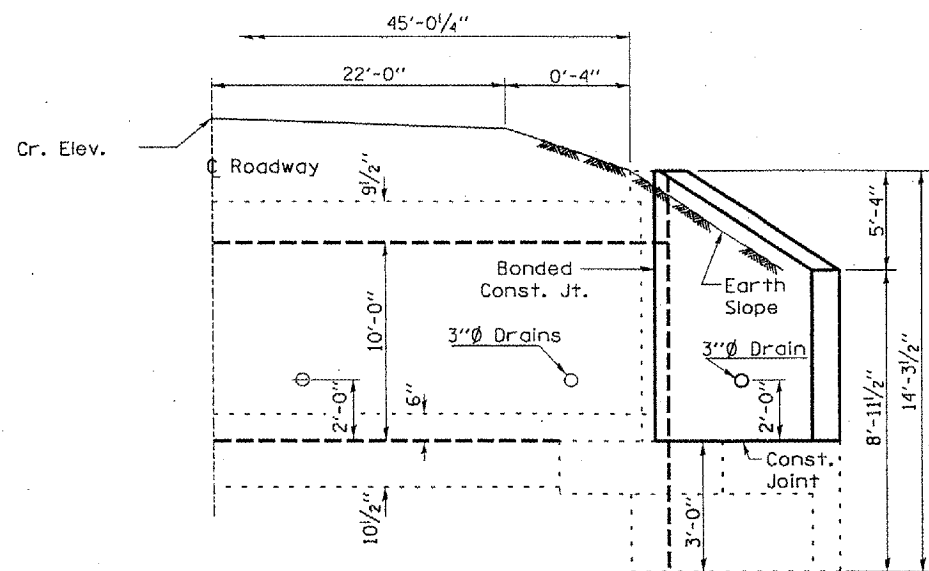


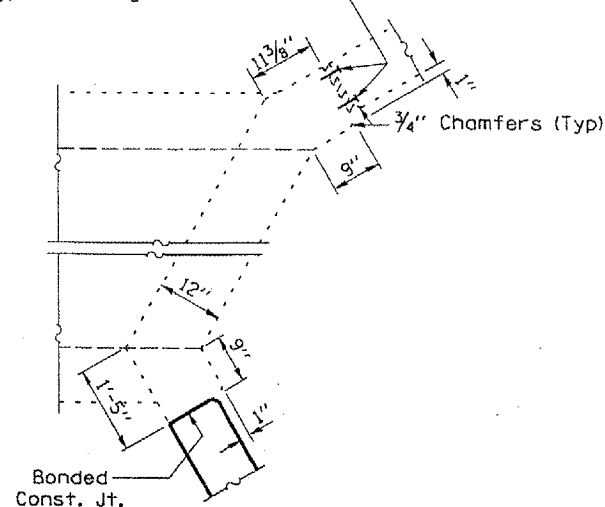
F.A.P. RTE.	SECTION	COUNTY	TOTAL SHEETS	SHEET NO.
623	(30)I-1	LASALLE	12	7
FED. ROAD DIST. NO. - ILLINOIS				



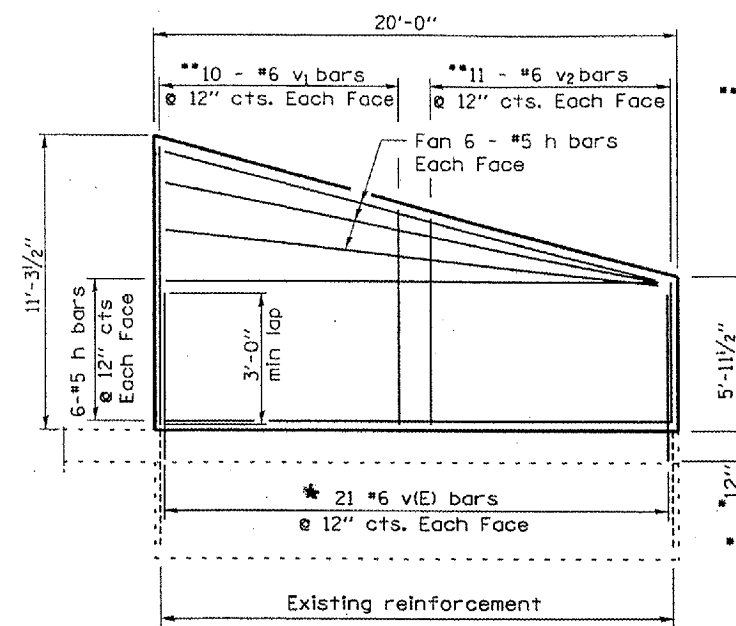
**HALF ELEVATION**

Dimensions at Rt. L's to  $\perp$  Roadway

Concrete Nails (Flat Hd. C.S.)  
1" long at 12" cts. vertical.  
(Typ each wing)



**CORNER DETAIL**



**ELEVATION**

\*\*Order v1 and v2 bars full length and cut to fit in field

\*Drill and epoxy grout #6 v(E) bars into existing footing

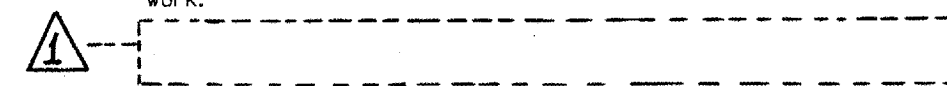
**EXISTING DESIGN STRESSES**

$T_y = 60,000 \text{ psi}$   
 $f'_c = 3,500 \text{ psi}$

**LOADING HS 20**

**NOTES:**

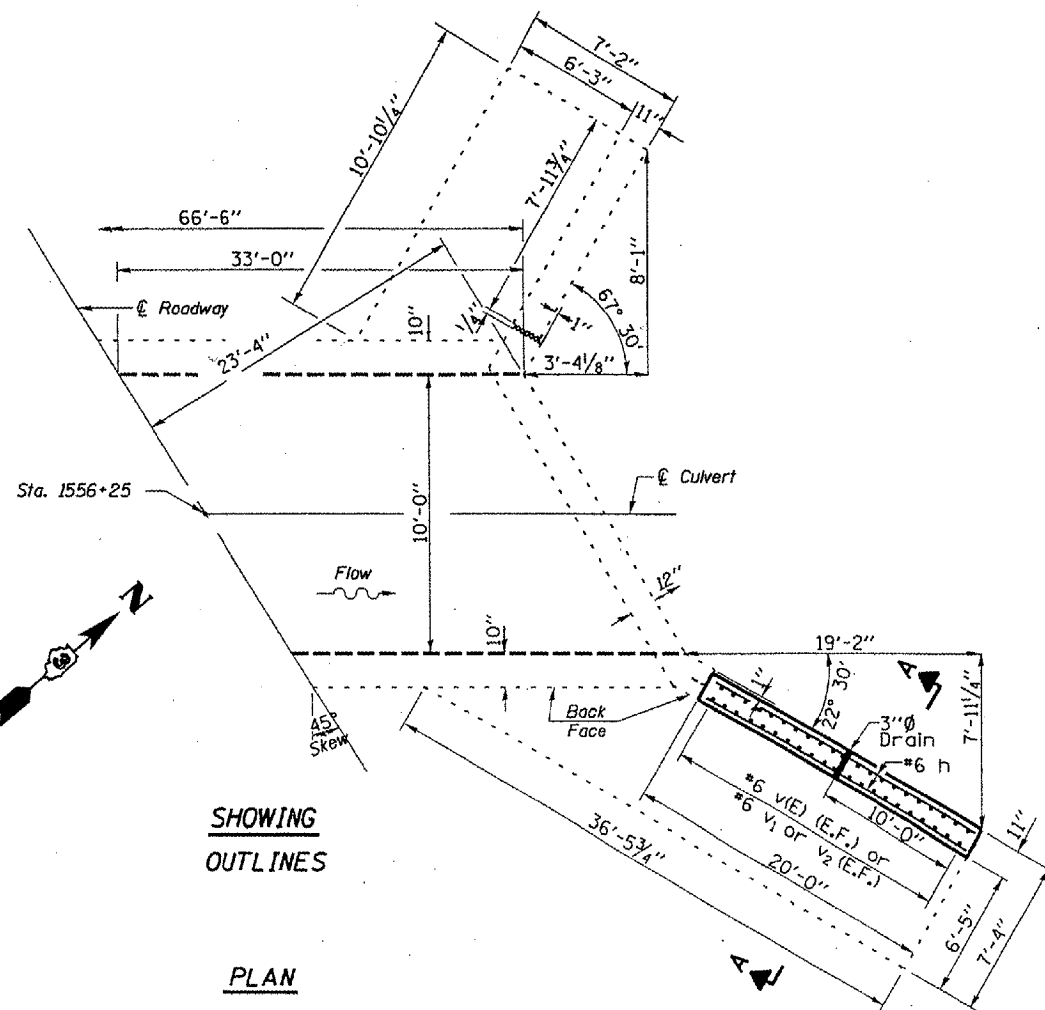
Plan dimensions and details relative to existing structure have been taken from existing plans and are subject to nominal construction variations. It shall be the Contractor's responsibility to verify such dimensions and details in the field and make necessary approved adjustments prior to construction or ordering of materials. Such variations shall not be cause for additional compensation for a change in the scope of the work, however, the Contractor will be paid for the quantity actually furnished at the unit price bid for the work.



Reinforcement bars designated (E) shall be epoxy coated.

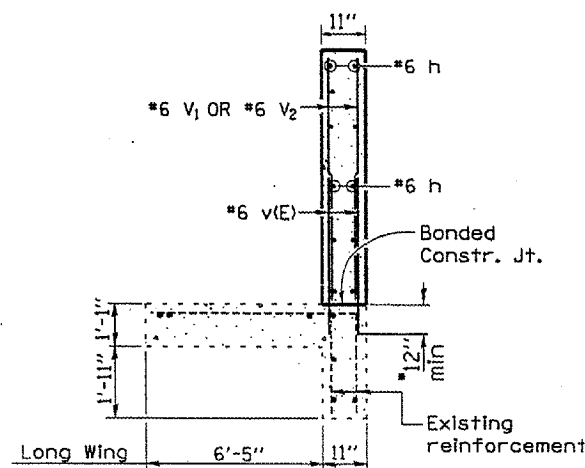
All construction joints shall be bonded.

The top of footing and the back vertical face of the wing wall shall be waterproofed according to the Special Provision for "Waterproofing Membrane Special", plan details and as directed by the Engineer.



**SHOWING OUTLINES**

**PLAN**



**SECTION A-A**

**BILL OF MATERIAL**

Bar	No.	Size	Length	Shape
h	24	#5	19'-9"	—
v(E)	42	#6	4'-6"	—
v1	20	#6	11'-0"	—
v2	22	#6	8'-4"	—
Concrete Structures		Cu. Yd.	5.9	
Reinforcement Bars, Epoxy Coated		Pound	284	
Reinforcement Bars, Epoxy Coated		Pound	1100	

Reinforcement designated (E) shall be Epoxy Coated

REVISIONS	
NAME	DATE

ILLINOIS DEPARTMENT OF TRANSPORTATION

**PROPOSED CULVERT DETAILS**

F.A.P. 623 (U.S. 6) SECTION (30)I-1

LASALLE COUNTY

STA. 1556 + 25

DATE 12/20/2005

DRAWN BY RLW

**VHV** 01/02/06