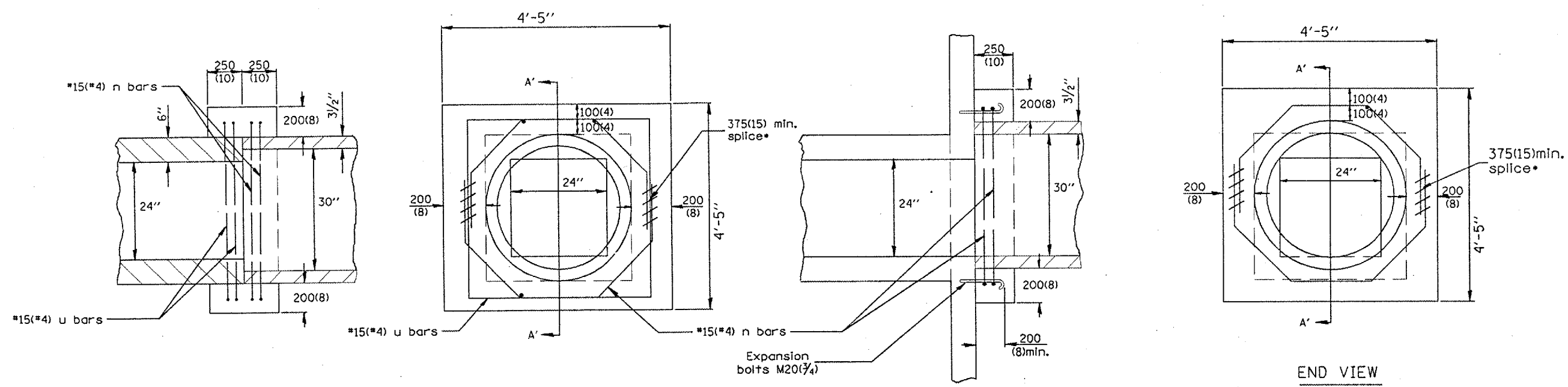


F.A.S. RTE.	SECTION	COUNTY	TOTAL SHEETS	SHEET NO.
380	-	KNOX	35	14
• 04 CULVERT EXT/REPAIR 2006				



SECTION A'-A'

END VIEW

SECTION A'-A'

END VIEW

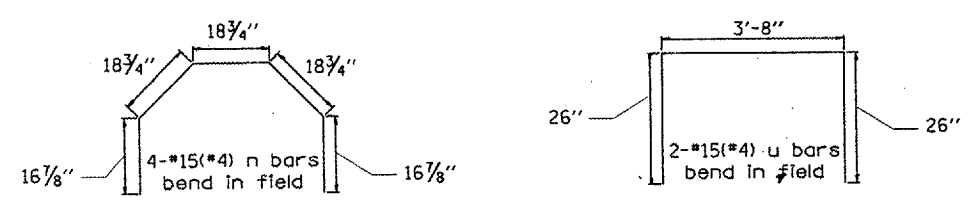
DOWN STREAM

UP STREAM

\* A 15" minimum splice is required for both n and u bars

**BILL OF MATERIAL**

Bar	No.	Size	Length	Shape
n	8	#4	7'-6"	U
u	4	#4	8'-0"	U
Concrete Collars			Cu. Yd.	1.0
Reinforcement Bars			Pound	62



**GENERAL NOTES**

1. The collar shall be constructed entirely of CLASS SI CONCRETE and in accordance with the applicable portions of Section 503 of the Standard Specifications. Reinforcement Bars shall conform to Section 508.
2. Expansion Bolts shall consist of approved Expansion Anchors, and M20(3/4) Hook Bolts which conform to Section 1006.09. These Bolts shall extend at least 200(8) into the new Concrete.

All dimensions are in millimeters (inches) unless otherwise noted.

ILLINOIS DEPARTMENT OF TRANSPORTATION

**COLLAR DETAIL**  
**STA. 1935+45.20**  
**LOCATION 1**