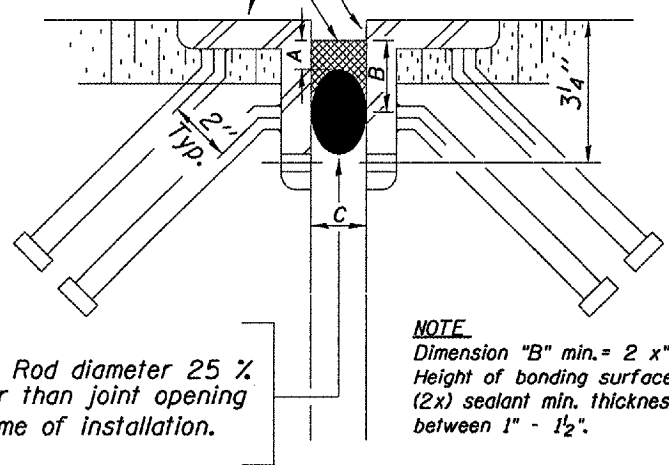


F.A.I. RTE.	SECTION	COUNTY	TOTAL SHEETS	SHEET NO.
155		TAZEWELL	27	22
STA. 18+89.42		TO STA. 21+10.58		
FED. ROAD DIST. NO. 4		ILLINOIS FED. AID PROJECT		

\* 04 Joint Repair 2006

Two-Part, Rapid-Cure 100% Silicone Jt. Sealer

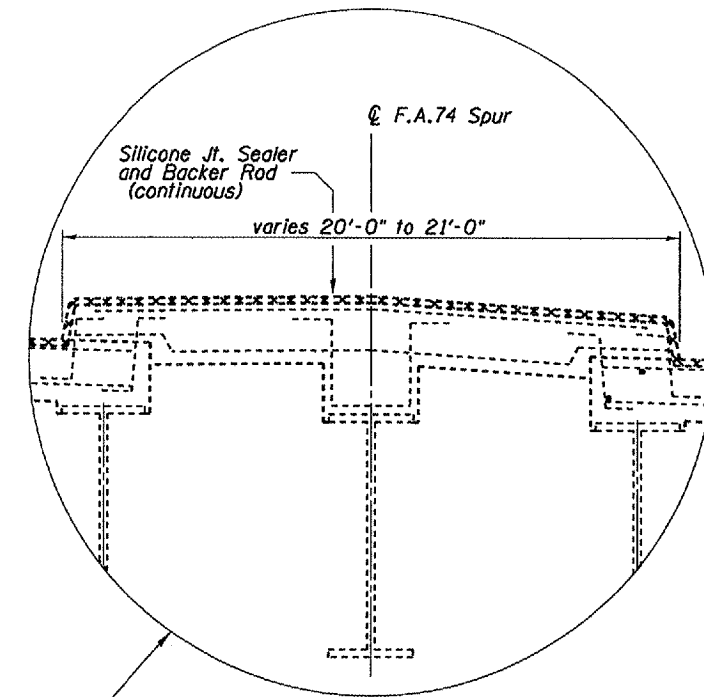
All exposed and accessible steel surfaces shall be blasted to near white condition, then metalized. In sidewalk, median, and parapet wall areas w/o steel, the concrete shall be cleaned by blasting and blowing clean until dust-free and dry prior to sealant application. Metalizing of concrete is not required.



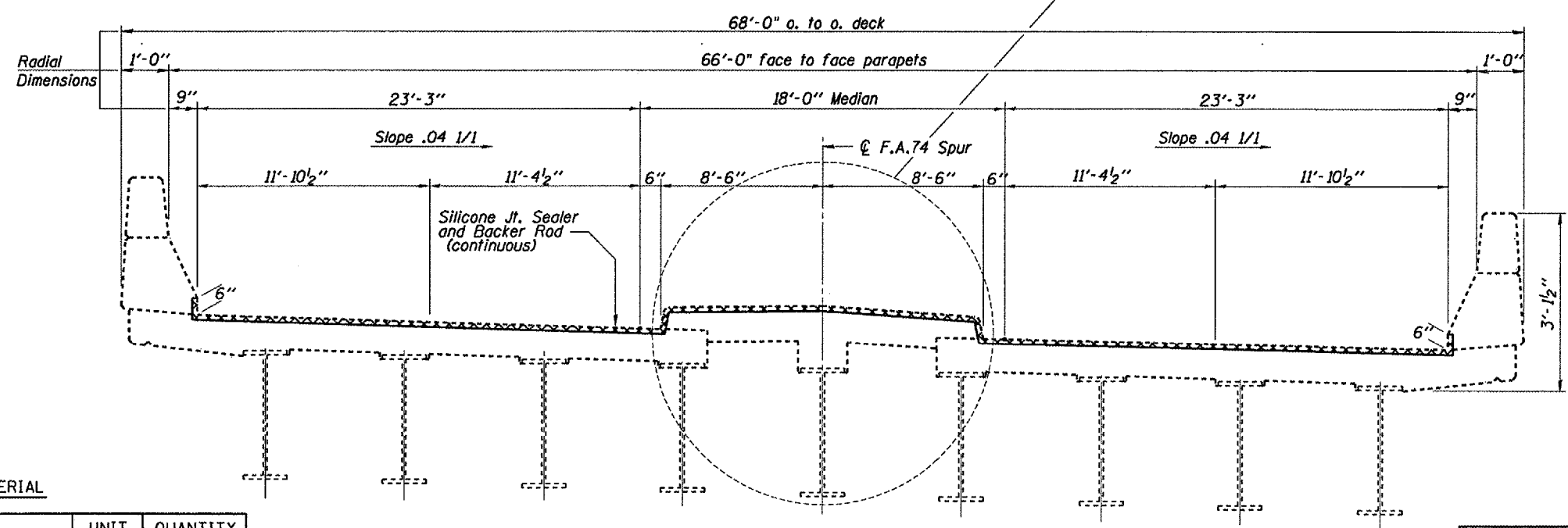
Backer Rod diameter 25 % greater than joint opening at time of installation.

**NOTE**  
Dimension "B" min. = 2 x "A" (where "A" = 3/8" to 5/8"). Height of bonding surface should be approximately (2x) sealant min. thickness. Dimension "C" varies between 1" - 1 1/2".

**PROPOSED BRIDGE JOINT SEALER DETAIL**



**PROPOSED MEDIAN JOINT DETAIL**



**EXISTING BRIDGE DECK CROSS SECTION**  
SN. 090-0095 (Looking East near Abutment)

**BILL OF MATERIAL**

ITEM	UNIT	QUANTITY
BLAST CLEANING BRIDGE JOINT STEEL	FOOT	165
THERMAL SPRAYING (METALIZING) BRIDGE JOINT STEEL	FOOT	115
SILICONE JOINT SEALER	FOOT	165
BITUMINOUS REMOVAL (MISCELLANEOUS)	SQ.YD.	8.0
BITUMINOUS MIXTURE FOR PATCHING	TON	1.0

REVISIONS	
NAME	DATE

SN 090-0095  
Il. 122E over I-155

ILLINOIS DEPARTMENT OF TRANSPORTATION

**DECK & JOINT DETAILS**

SCALE: VERT. \_\_\_\_\_  
HORIZ. \_\_\_\_\_  
DATE 08-16-2005

DRAWN BY CEJ  
CHECKED BY \_\_\_\_\_

**NOTE**  
ALL DIMENSIONS TAKEN AT RIGHT ANGLE TO ROADWAY CENTERLINE.

PLT DATE \* 08/16/05  
FILE NAME \* 081605  
PLOT SCALE \* 1/8"=1'-0"  
REFERENCE \* 081605