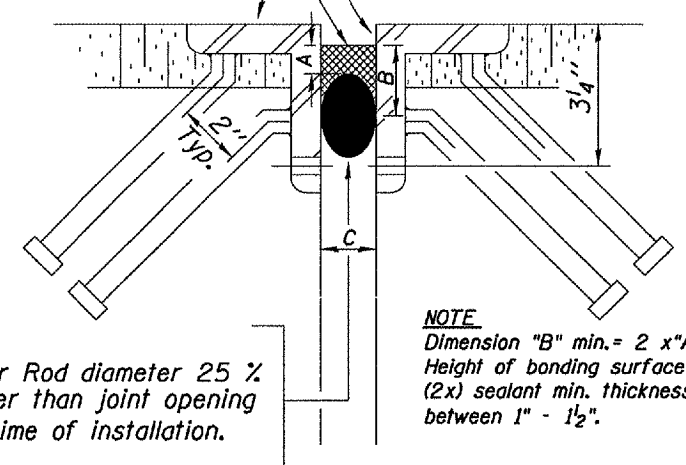


F.A.I. RTE.	SECTION	COUNTY	TOTAL SHEETS	SHEET NO.
155		TAZEWELL	27	26
STA. 744+80.17 TO STA. 746+58.00				
FED. ROAD DIST. NO. 4 ILLINOIS FED. AID PROJECT				
• 04 Joint Repair 2006				

All exposed and accessible steel surfaces shall be blasted to near white condition, then metalized. In sidewalk, median, and parapet wall areas w/o steel, the concrete shall be cleaned by blasting and blowing clean until dust-free and dry prior to sealant application. Metalizing of concrete is not required.

Two-Part, Rapid-Cure 100% Silicone Jt. Sealer

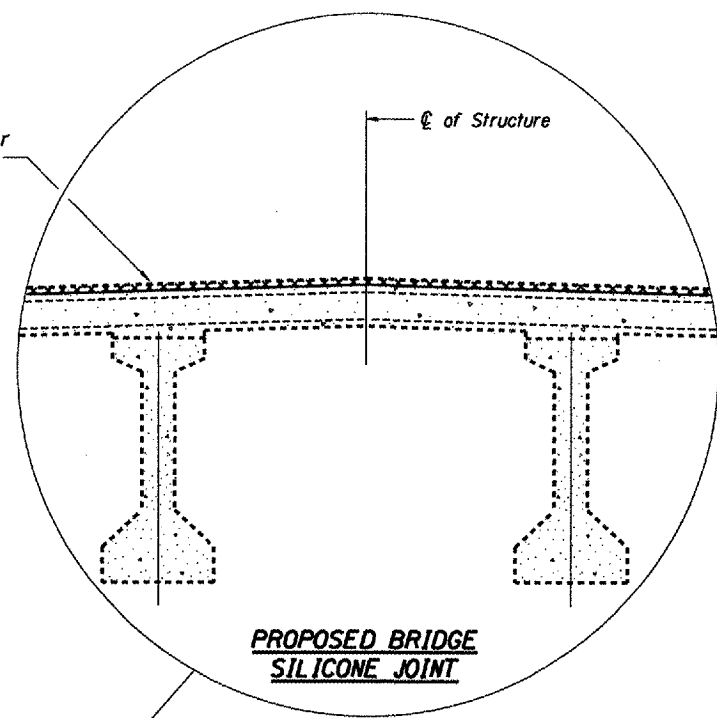


Backer Rod diameter 25 % greater than joint opening at time of installation.

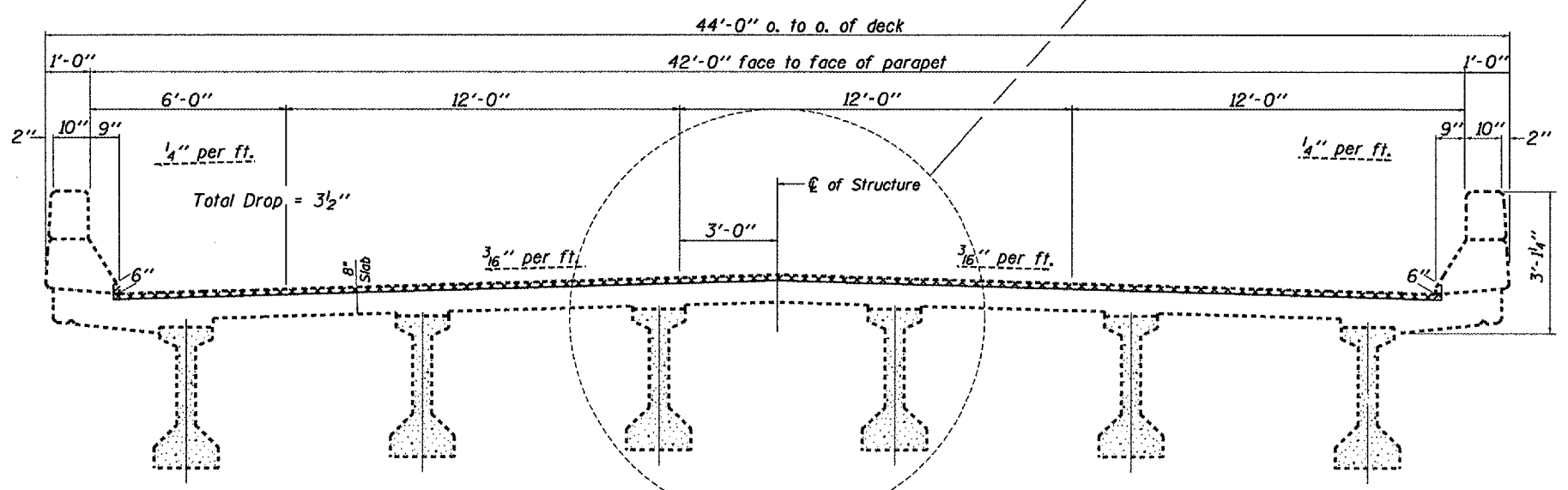
NOTE
Dimension "B" min. = 2 x "A" (where "A" = 3/8" to 5/8"). Height of bonding surface should be approximately (2x) sealant min. thickness. Dimension "C" varies between 1" - 1 1/2".

PROPOSED BRIDGE JOINT SEALER DETAIL

Silicone Jt. Sealer and Backer Rod (continuous)



PROPOSED BRIDGE SILICONE JOINT



NEAR PIER

NEAR MIDSPAN

CROSS SECTION
(Looking S.B. in the direction of traffic)

BILL OF MATERIAL

ITEM	UNIT	QUANTITY
BLAST CLEANING BRIDGE JOINT STEEL	FOOT	85
BLAST CLEANING PPC BEAM ENDS	FOOT	48
THERMAL SPRAYING (METALIZING) BRIDGE JOINT STEEL	FOOT	82
SILICONE JOINT SEALER	FOOT	85
THERMAL SPRAYING (METALIZING) PPC BEAM ENDS	SQ.FT.	279

PLT DATE * DATE *
PLT SCALE * SCALE *
REF * REF *
REFERENCE * REF *

REVISIONS	
NAME	DATE

ILLINOIS DEPARTMENT OF TRANSPORTATION

DECK AND JOINT DETAILS

SCALE: VERT. DRAWN BY CEJ
 HORIZ. CHECKED BY
 DATE 07-21-2005

SN 090-0093
I-155 SB over
Indian Crk.