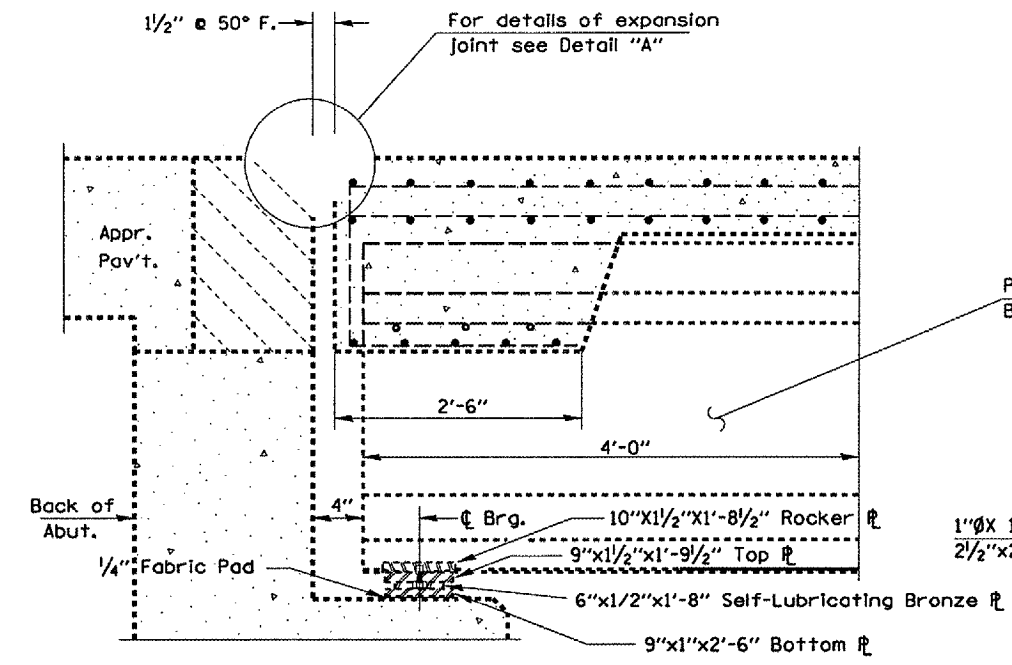
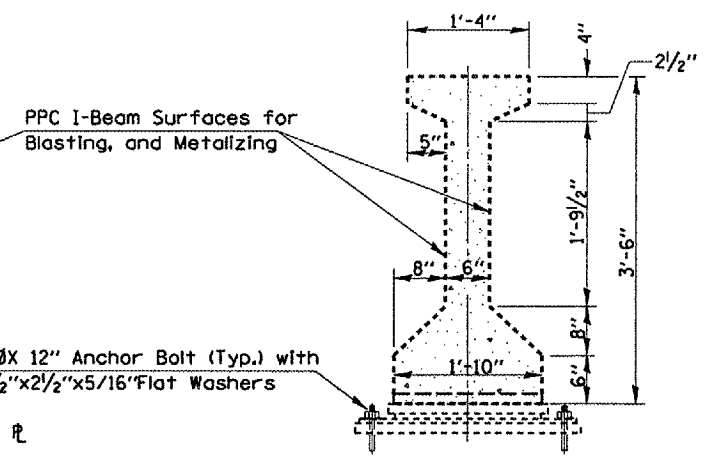


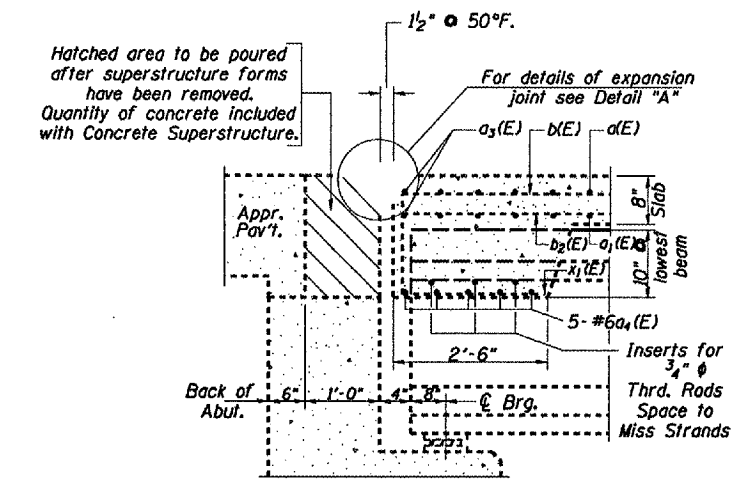
F.A.I. RTE.	SECTION	COUNTY	TOTAL SHEETS	SHEET NO.
155		TAZEWELL	27	27
STA. 744+80.17 TO STA. 746+58.00				
FED. ROAD DIST. NO. 4 ILLINOIS FED. AID PROJECT				
• D4 Joint Repair 2006				



ABUTMENT/I-BEAM END SECTION
(North Abutment)

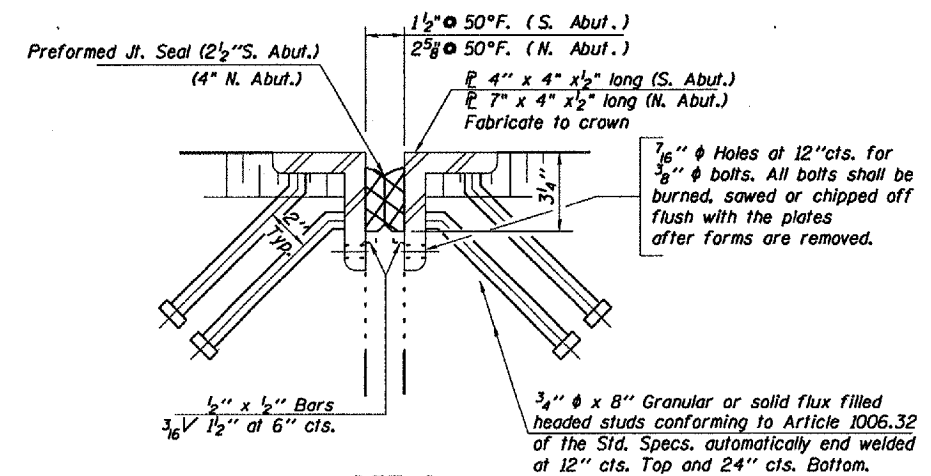


PPC I-BEAM CROSS-SECTION
(6 I-Beams/12 Beam Ends)

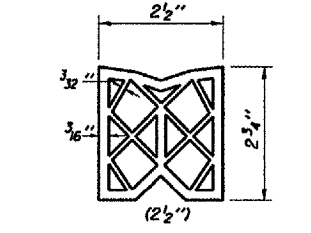


SECTION THRU ABUTMENT

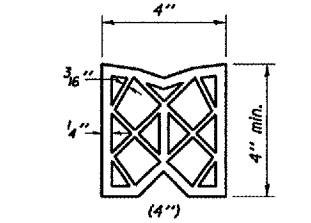
Note
All horizontal dimensions are at right angles to beam ends.



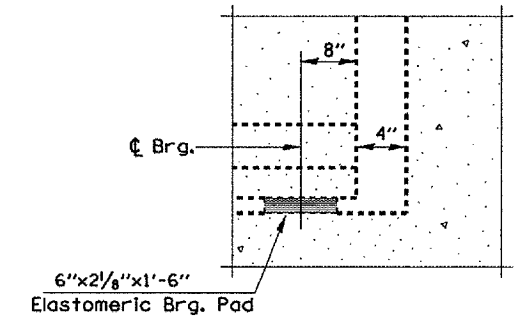
DETAIL A



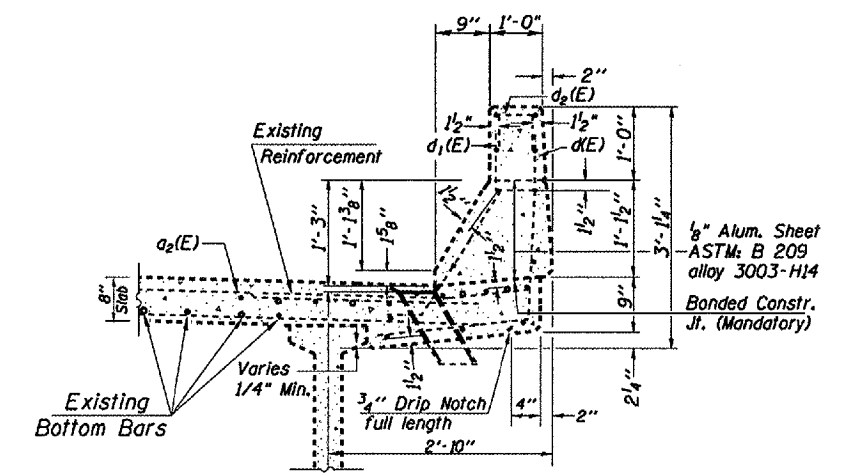
EXISTING PREFORMED JOINT SEAL
(S. Abut. only)



EXISTING PREFORMED JOINT SEAL
(N. Abut. only)



SOUTH ABUTMENT SECTION



SECTION THRU PARAPET

Note:
All horizontal dimensions are at right angles to beam ends. Beam length for metallizing shall be measured 4 feet from end and cover all visible side surfaces. Surface area of I-Beam is 5.8 sq.ft. per lineal beam foot.
All bearings and plates shall have pack rust sand blasted clean prior to being metallized as beam ends are processed. Cost to be included in "THERMAL SPRAYING (METALIZING) PPC BEAM ENDS".

PLOT DATE • DATES
FILE NAME • FILES
REFERENCE • SHEET

REVISIONS	DATE

ILLINOIS DEPARTMENT OF TRANSPORTATION

SUPERSTRUCTURE DETAILS

SCALE: VERT. DATE 07-22-2005
HORIZ. DATE 07-22-2005

DRAWN BY CEJ
CHECKED BY

SN 090-0093
I-155 SB over
Indian Crk.