

DESIGNER: CLARK JONES  
PHONE: (309)671-3452

PROJECT ENGINEER: JIM MILLER  
PHONE: (309)671-3451

F.A. RTE.	SECTION	COUNTY	TOTAL SHEETS	SHEET NO.
VAR		PEO/TAZ	27	1

\* D4 Joint Repair 2006

STATE OF ILLINOIS  
DEPARTMENT OF TRANSPORTATION  
DIVISION OF HIGHWAYS

**PROPOSED  
HIGHWAY PLANS**

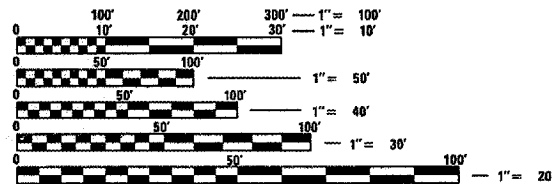
FAP 317/FAI 155 (US 24)/(I-155)  
SECTION D4 JOINT REPAIR 2006  
PEORIA / TAZEWELL COUNTY  
C-94-023-05

**INDEX OF SHEETS:**

- 1. COVER SHEET
- 2. GENERAL NOTES
- 3. SUMMARY OF QUANTITIES
- 4. SCHEDULE OF QUANTITIES
- 5 ~ 9. PLAN SHEETS & DETAILS(072-0012/0133)
- 10 ~ 17. PLAN SHEETS & DETAILS(090-0130)
- 18 ~ 22. PLAN SHEETS & DETAILS(090-0095)
- 23 ~ 27. PLAN SHEETS & DETAILS(090-0093)

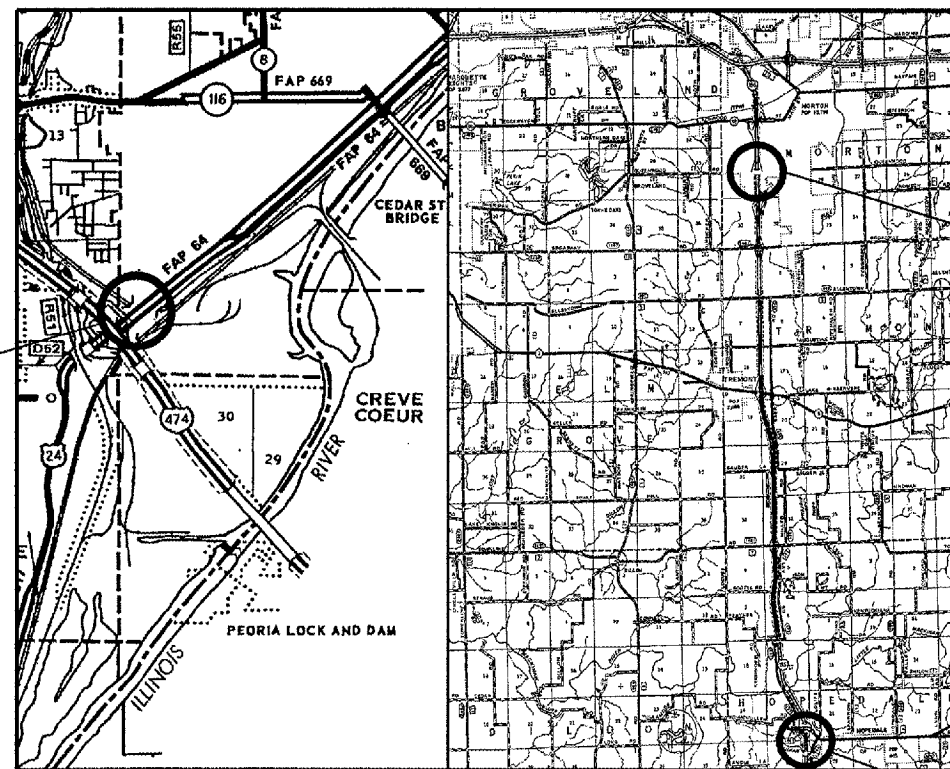
**STANDARDS:**

- 701101-01 701601-04
- 701201-02 702001-06
- 701406-04 701400-02



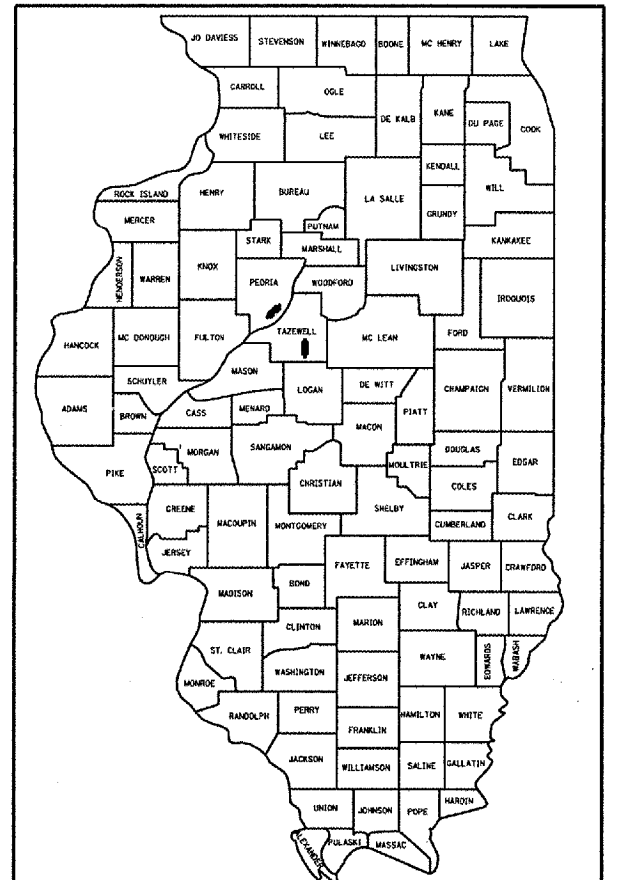
FULL SIZE PLANS HAVE BEEN PREPARED USING STANDARD ENGINEERING SCALES. REDUCED SIZED PLANS WILL NOT CONFORM TO STANDARD SCALES. IN MAKING MEASUREMENTS ON REDUCED PLANS, THE ABOVE SCALES MAY BE USED.

J.U.L.I.E.  
JOINT UTILITY LOCATION INFORMATION FOR EXCAVATION  
1-800-892-0123



PROJECT CONSISTS OF JOINT REMOVAL/REPLACEMENT OF EXPANSION JOINT SEALS WITH POURABLE SEALANTS ON 5 STRUCTURES: (SN 072-0012 AND 072-0133), CARRYING US 24 OVER BU&CNW RR, (SN 090-0130), QUEENWOOD RD. OVER I-155, (SN 090-0095), IL.122E OVER I-155 TWO MILES WEST OF HOPEDALE, AND (SN 090-0093), I-155 SB OVER INDIAN CRK. STRUCTURE 090-0093 ALSO INCLUDES METALING PPC BEAM ENDS.

D-94-021-05



LOCATION OF SECTION INDICATED THUS: -

STATE OF ILLINOIS  
DEPARTMENT OF TRANSPORTATION  
DIVISION OF HIGHWAYS

SUBMITTED October 20, 2005  
*[Signature]*  
DEPUTY DIRECTOR OF HIGHWAYS, REGION ENGINEER

December 9, 2005  
*[Signature]*  
ENGINEER OF DESIGN AND ENVIRONMENT

December 9, 2005  
*[Signature]*  
DEPUTY DIRECTOR OF HIGHWAYS, CHIEF ENGINEER

**PRINTED BY THE AUTHORITY  
OF THE STATE OF ILLINOIS**

F.A.R. RTE.	SECTION	COUNTY	TOTAL SHEETS	SHEET NO.
317	*	PEORIA	27	2
STA. 211+60.95		TO STA. 219+27.65		
FED. ROAD DIST. NO. 4 ILLINOIS FED. AID PROJECT				
• 04 Joint Repair 2006				

## COMMITMENTS

*NO COMMITMENTS HAVE BEEN MADE FOR THIS PROJECT.*

## GENERAL NOTES

*ALL EXISTING PJS EXPANSION JOINT SEALS FOR THESE STRUCTURES SHALL BE REMOVED AS INCIDENTAL TO "BLAST CLEANING BRIDGE JOINT STEEL".*

*THERE SHALL BE NO WORK DONE UNDERNEATH THE BRIDGE DECK ON SN.072-0012 AND 072-0133 OVER, ON, OR NEAR THE RAILROAD. THE STATE HOLDS NO LIABILITY RESPONSIBILITY FOR ANY CLAIMS MADE BY THE RAILROAD FOR ANY ISSUES RESULTING FROM OR PERTAINING TO THE PROPOSED WORK IN THIS CONTRACT.*

PLT DATE \* DATES  
FILE NAME \* FILES  
SCALE \* SHEETS  
REFERENCE \* SHEETS

REVISIONS	
NAME	DATE

ILLINOIS DEPARTMENT OF TRANSPORTATION

### GENERAL NOTES

SCALE: VERT.  
HORIZ.  
DATE 06-14-2005

DRAWN BY CEJ  
CHECKED BY

F.A.P. RTE.	SECTION	COUNTY	TOTAL SHEET SHEETS NO.
317	.	PEORIA	27 3
STA. 211+60.95		TO STA. 219+21.65	
FED. ROAD DIST. NO. 4		ILLINOIS	FED. AID PROJECT
D4 Joint Repair 2006			

US.24I-155

URBAN RURAL

# SUMMARY OF QUANTITIES

100% STATE SAFETY - 2A  
PEORIA/TAZEWELL

CODE NO.	ITEM	UNIT	PEO	TAZ	TOTAL
67100100	MOBILIZATION	LSUM	0.5	0.5	1
70100450	TRAFFIC CONTROL AND PROTECTION, STANDARD 701201	LSUM		1	1
70100700	TRAFFIC CONTROL AND PROTECTION, STANDARD 701406	LSUM		1	1
70102630	TRAFFIC CONTROL AND PROTECTION, STANDARD 701601	LSUM	0.5	0.5	1
X0301424	SILICONE JOINT SEALER	FOOT	687	391	1078
X4409905	BITUMINOUS REMOVAL (MISCELLANEOUS)	SQ. YD.		8	8
Z0004800	BITUMINOUS MIXTURE FOR PATCHING	TON		1	1
X0325215	THERMAL SPRAYING (METALIZING) BRIDGE JOINT STEEL	FOOT	643	329	972
X0325216	THERMAL SPRAYING (METALIZING) PPC BEAM ENDS	SQ. FT.		279	279
X0325217	BLAST CLEANING BRIDGE JOINT STEEL	FOOT	687	391	1078
X0325218	BLAST CLEANING PPC BEAM ENDS	FOOT		48	48
X0325219	BRIDGE MEDIAN EPDM SPECIAL	FOOT	890		890

PLOT DATE  
 DATE  
 PLOT SCALE  
 SCALE  
 REFERENCE

REVISIONS	
NAME	DATE
Clark Jones	10-31-05

ILLINOIS DEPARTMENT OF TRANSPORTATION

## SUMMARY OF QUANTITIES

SCALE: VERT.  
HORIZ.  
DATE 05-18-2005

DRAWN BY CEJ  
CHECKED BY

F.A.R. RTE.	SECTION	COUNTY	TOTAL SHEETS	SHEET NO.
404		PEORIA	27	4
STA. 459+08.81		TO STA. 460+84.25		
FED. ROAD DIST. NO. 4 ILLINOIS FED. AID PROJECT				
• 04 Joint Repair 2006				

# SCHEDULE OF QUANTITIES

## MOBILIZATION

ENTIRE PROJECT = 1.0 LSUM

## T, C, & P, STANDARD 701201

QUEENWOOD JOBSITE = 1.0 LSUM

## T, C, & P, STANDARD 701406

INDIAN CRK. JOBSITE = 1.0 LSUM

## T, C, & P, STANDARD 701601

BARTONVILLE JOBSITE = 0.5 LSUM  
 122E JOBSITE = 0.5 LSUM  
1.0 LSUM

## BLAST CLEANING BRIDGE JOINT STEEL

BRIDGE JOBSITES = 1078 FOOT

## METALIZING BRIDGE JOINT STEEL

BRIDGE JOBSITES = 972 FOOT

## SILICONE JOINT SEALER

BRIDGE JOBSITES = 1078 FOOT

## BRIDGE MEDIAN EPDM SPECIAL

BARTONVILLE JOBSITE = 890 FOOT

## BITUMINOUS REMOVAL (MISCELLANEOUS)

IL. 122E BRIDGE JOBSITE = 8.0 SQ. YD.

## BITUMINOUS MIXTURE FOR PATCHING

IL. 122E BRIDGE JOBSITE = 1.0 TON

## BLAST CLEANING PPC BEAM ENDS

INDIAN CREEK BRIDGE JOBSITE = 48 FOOT

## METALIZING PPC BEAM ENDS

INDIAN CREEK BRIDGE JOBSITE = 279 SQ. FT.

PLAT DATE • NOTES  
 PLOT SCALE • SCALES  
 REFERENCE • REFERENCE

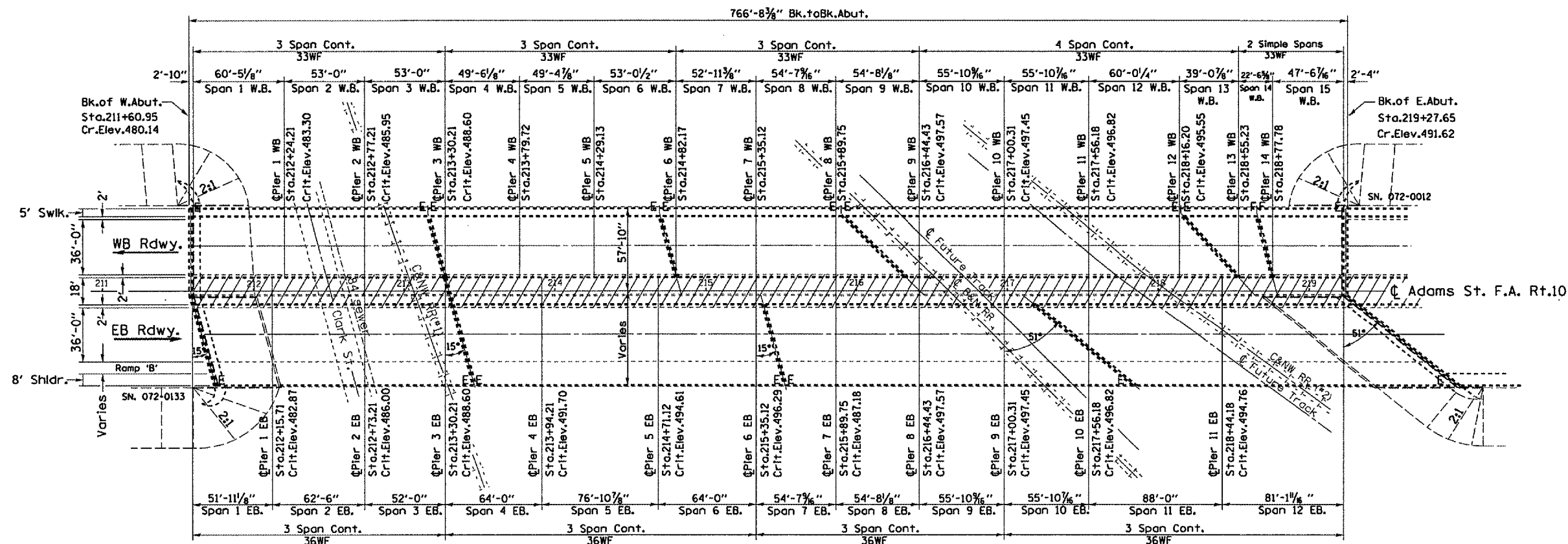
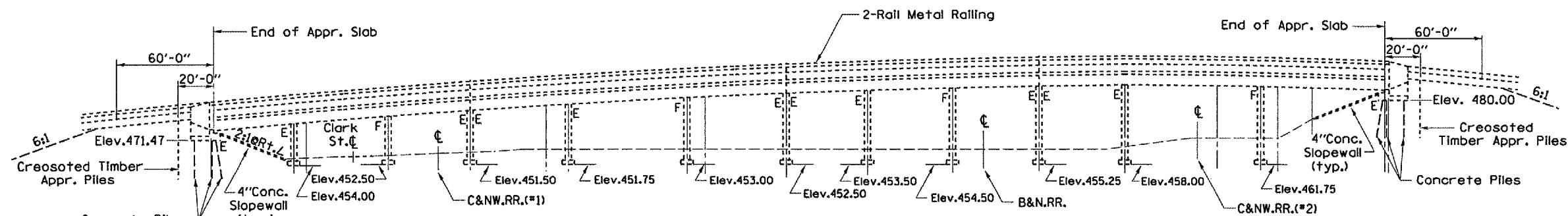
REVISIONS	
NAME	DATE

ILLINOIS DEPARTMENT OF TRANSPORTATION

## SCHEDULE OF QUANTITIES

SCALE: VERT.      DRAWN BY: CEJ  
 HORIZ.              CHECKED BY  
 DATE 01-13-2004

F.A.R. RTE.	SECTION	COUNTY	TOTAL SHEETS	SHEET NO.
317		PEORIA	27	5
STA. 211+60.95 TO STA. 219+27.65				
FED. ROAD DIST. NO. 4 ILLINOIS FED. AID PROJECT				
• D4 Joint Repair 2006				



**GENERAL NOTES**

PLAN DIMENSIONS AND DETAILS RELATIVE TO EXISTING STRUCTURE HAVE BEEN TAKEN FROM EXISTING PLANS AND ARE SUBJECT TO NOMINAL CONSTRUCTION VARIATIONS. IT SHALL BE THE CONTRACTOR'S RESPONSIBILITY TO VERIFY SUCH DIMENSIONS AND DETAILS IN THE FIELD AND MAKE NECESSARY APPROVED ADJUSTMENTS PRIOR TO WORK OR THE ORDERING OF MATERIALS. SUCH VARIATIONS SHALL NOT BE CAUSE FOR ADDITIONAL COMPENSATION FOR A CHANGE IN THE SCOPE OF THE WORK. HOWEVER, THE CONTRACTOR WILL BE PAID FOR THE QUANTITY ACTUALLY FURNISHED AT THE UNIT PRICE BID FOR THE PROJECT.

- USE 2-PART RAPID-CURE 100% SILICONE SEALER ONLY - NO OPTION. SEE SPECIAL PROVISIONS.

FOR INFORMATION ONLY

REVISIONS	
NAME	DATE

SN 072-0012 / 072-0133  
Adams St. over Clark St. & B.N.R.R.

ILLINOIS DEPARTMENT OF TRANSPORTATION

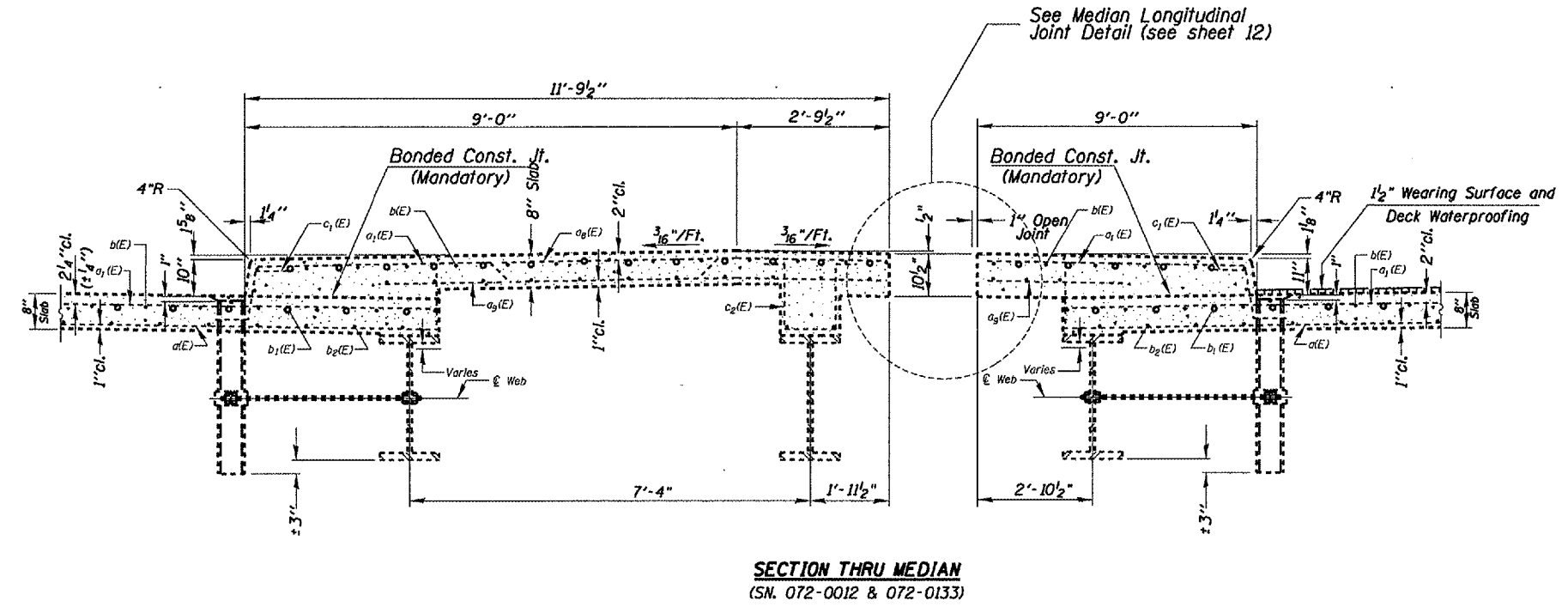
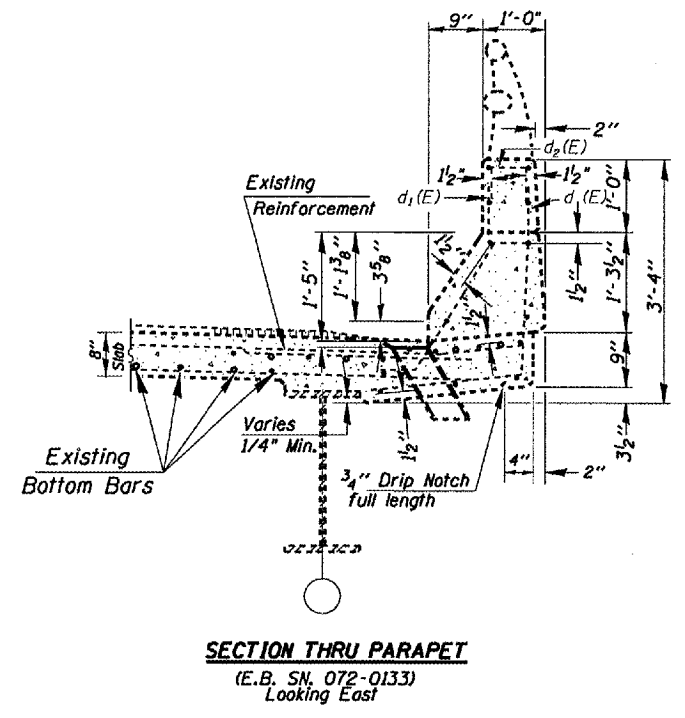
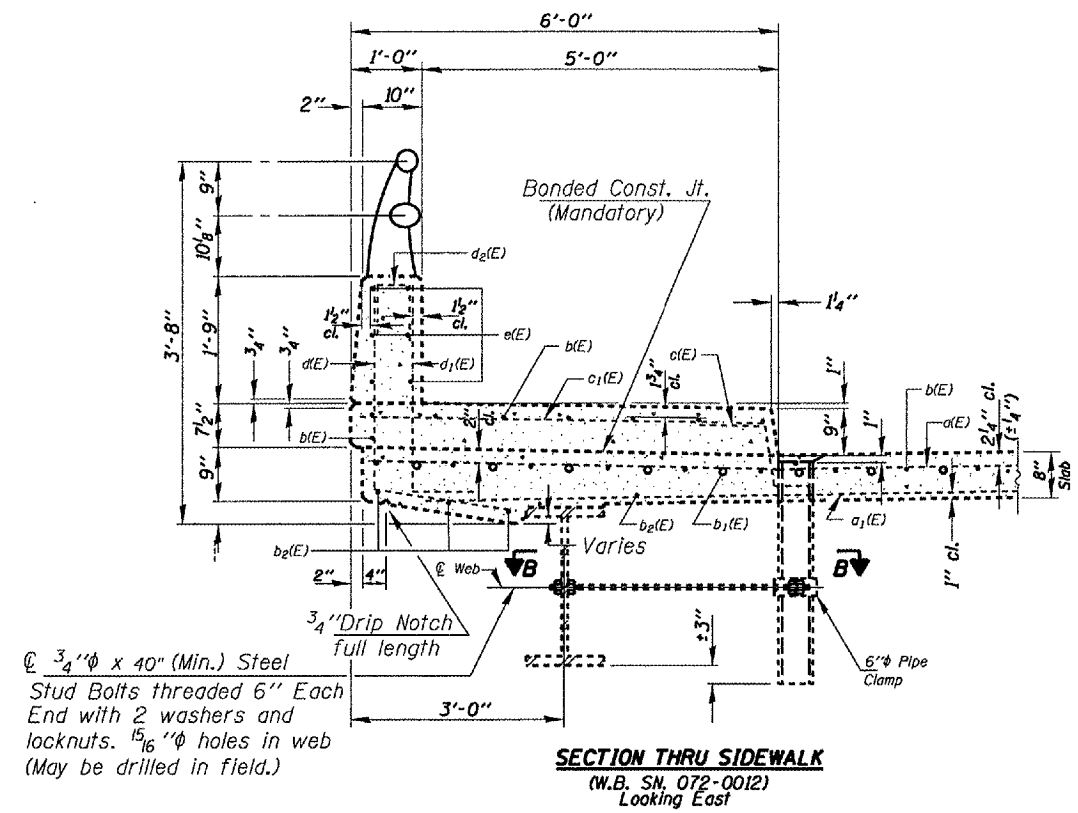
**PLAN AND ELEVATION**

SCALE: VERT. \_\_\_\_\_  
HORIZ. \_\_\_\_\_  
DATE 06-06-2005

DRAWN BY CEJ  
CHECKED BY \_\_\_\_\_

PLT DATE: \_\_\_\_\_  
FILE NAME: \_\_\_\_\_  
PLOT SCALE: \_\_\_\_\_  
REFERENCE: \_\_\_\_\_

F.A.P. RTE.	SECTION	COUNTY	TOTAL SHEETS	SHEET NO.
317		PEORIA	27	6
STA. 211+60.95		TO STA. 219+27.65		
FED. ROAD DIST. NO. 4 ILLINOIS FED. AID PROJECT				
• 04 Joint Repair 2006				



FOR INFORMATION ONLY

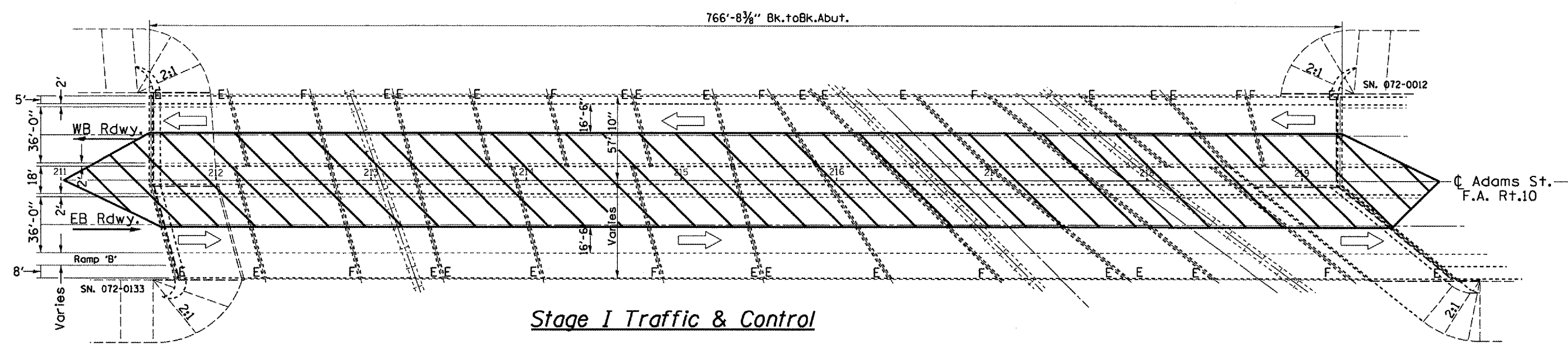
REVISIONS	
NAME	DATE

SN 072-0012 / 072-0133  
Adams St. over Clark St. & B.N.R.R.

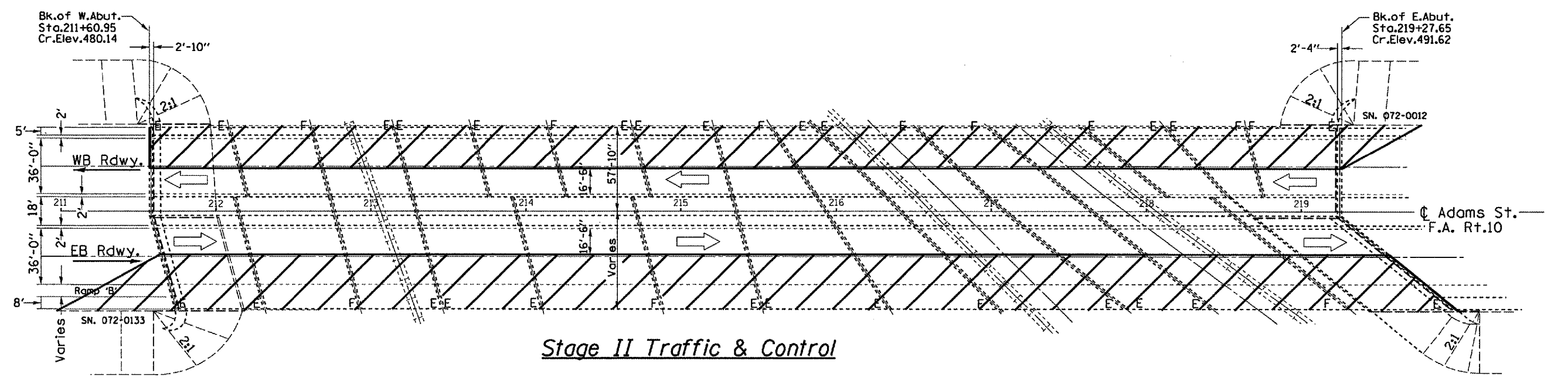
ILLINOIS DEPARTMENT OF TRANSPORTATION  
**SUPERSTRUCTURE  
DETAILS**  
SCALE: VERT.  
HORIZ.  
DATE 06-16-2005  
DRAWN BY CEJ  
CHECKED BY

PLOT DATE \* DATES  
FILE NAME \* FILE#  
PLOT SCALE \* SCALE  
REFERENCE \* SHEETS

F.A.R. RTE.	SECTION	COUNTY	TOTAL SHEETS	SHEET NO.
317		PEORIA	27	7
STA. 211+60.95		TO STA. 219+27.65		
FED. ROAD DIST. NO. 4 ILLINOIS FED. AID PROJECT				
• 04 Joint Report 2006				



Stage I Traffic & Control



Stage II Traffic & Control

	Type III Barricade w/ flashing light		Work Area
	Barricade or Drum with flashing lights		Sign
	Cone, Drum, or Barricade		Arrow Board
	Flagger w/traffic control sign		

**NOTE**  
Refer to Highway Standard 701601 for exact placement of traffic management devices and other clarifications as construction staging symbols and dimensioning were duplicated off of this standard.

REVISIONS	
NAME	DATE

SN 072-0012 / 072-0133  
Adams St. over Clark St. & B.N.R.R.

ILLINOIS DEPARTMENT OF TRANSPORTATION

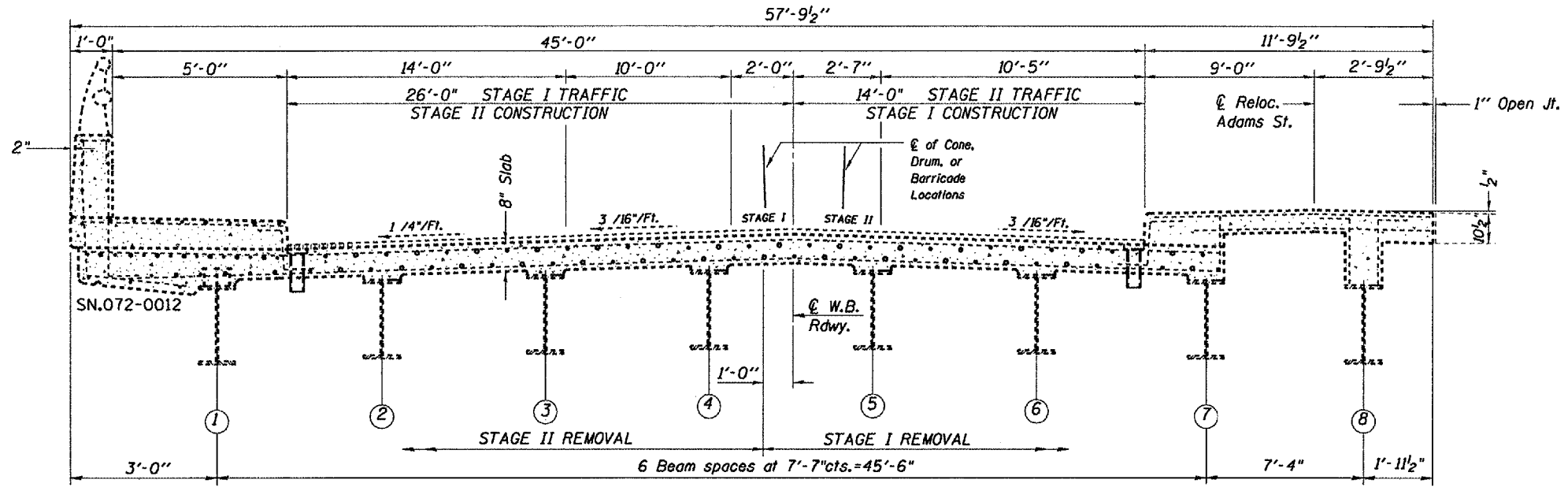
## TRAFFIC STAGING PLAN

SCALE: VERT. \_\_\_\_\_  
HORIZ. \_\_\_\_\_  
DATE: 06-07-2005

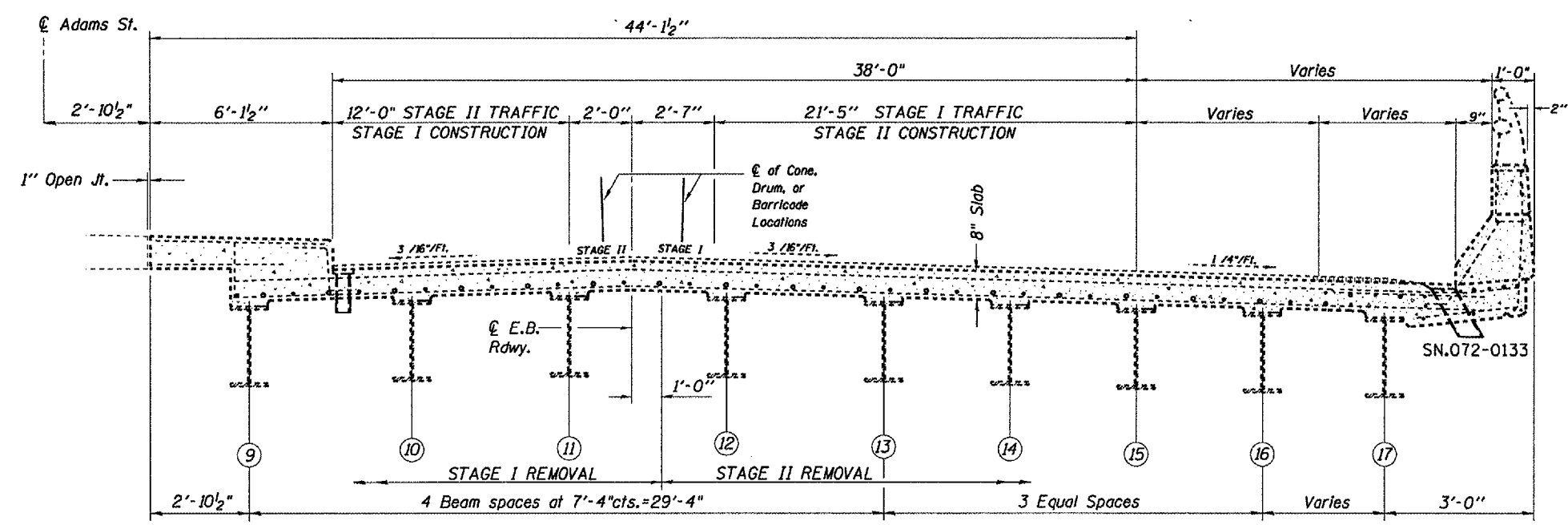
DRAWN BY: CEJ  
CHECKED BY: \_\_\_\_\_

PLOT DATE \* NOTES \*  
 FILE NAME \* FILES \*  
 PLOT SCALE \* SCALES \*  
 REFERENCE \* REFS \*

F.A.R. RTE.	SECTION	COUNTY	TOTAL SHEETS	SHEET NO.
317		PEORIA	27	8
STA. 211+60.95		TO STA. 219+27.65		
FED. ROAD DIST. NO. 4 ILLINOIS FED. AID PROJECT				
• 04 Joint Repair 2006				



**CROSS SECTION**  
(Westbound Deck)



**CROSS SECTION**  
(Eastbound Deck)

REVISIONS	
NAME	DATE

SN 072-0012 / 072-0133  
Adams St. over Clark St. & B.N. R.R.

ILLINOIS DEPARTMENT OF TRANSPORTATION  
**STAGE REMOVAL AND CONSTRUCTION**

SCALE: VERT. \_\_\_\_\_  
HORIZ. \_\_\_\_\_  
DATE: 06-14-2005  
DRAWN BY: CEJ  
CHECKED BY: \_\_\_\_\_

PLT DATE \* SCALES \* SHEETS \* FILE NAME \* PLOT SCALE \* SCALES \* REFERENCE \* REF#



F.A.P. RTE.	SECTION	COUNTY	TOTAL SHEETS	SHEET NO.
317		PEORIA	27	9
STA. 211+60.95		TO STA. 219+27.65		
FED. ROAD DIST. NO. 4		ILLINOIS FED. AID PROJECT		
04 Joint Repair 2006				

Two-Part, Rapid-Cure 100% Silicone Jt. Sealer

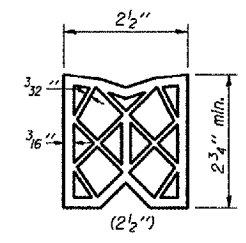
All exposed and accessible (from the top) steel surfaces shall be blasted to near white condition, then metalized. In sidewalk and parapet wall areas w/o steel, the concrete shall be cleaned by blasting and blowing clean until dust-free and dry prior to sealant application; metalizing of concrete is not required.

Backer Rod diameter 25 % greater than joint opening.

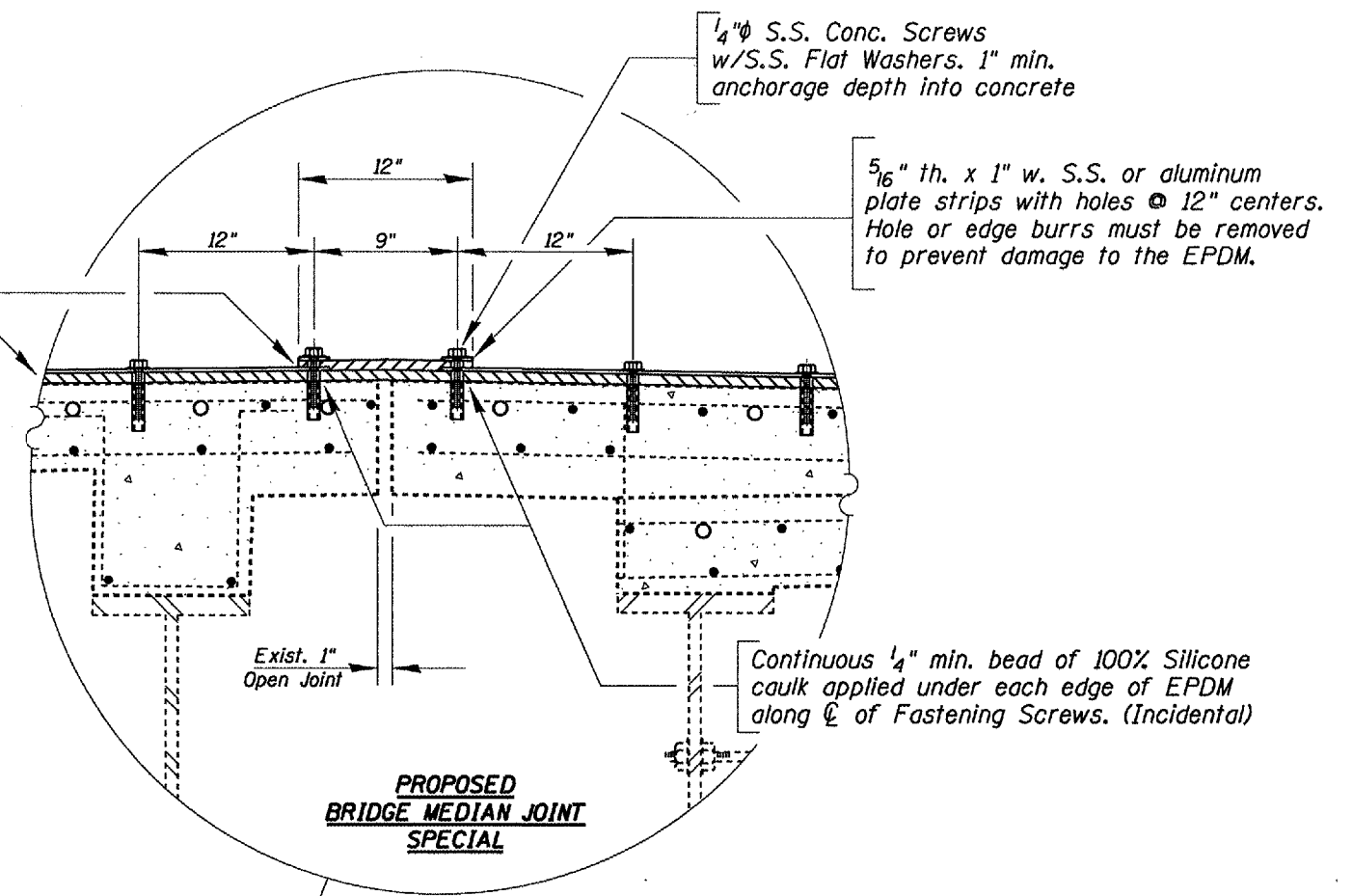
**NOTE**  
Dimension "B" min. = 2 x "A" (where "A" = 3/8" to 5/8"). Height of bonding surface should be approximately (2x) sealant min. thickness. Dimension "C" varies between 1" - 2 1/2".

**PROPOSED BRIDGE JOINT SEALER DETAIL**

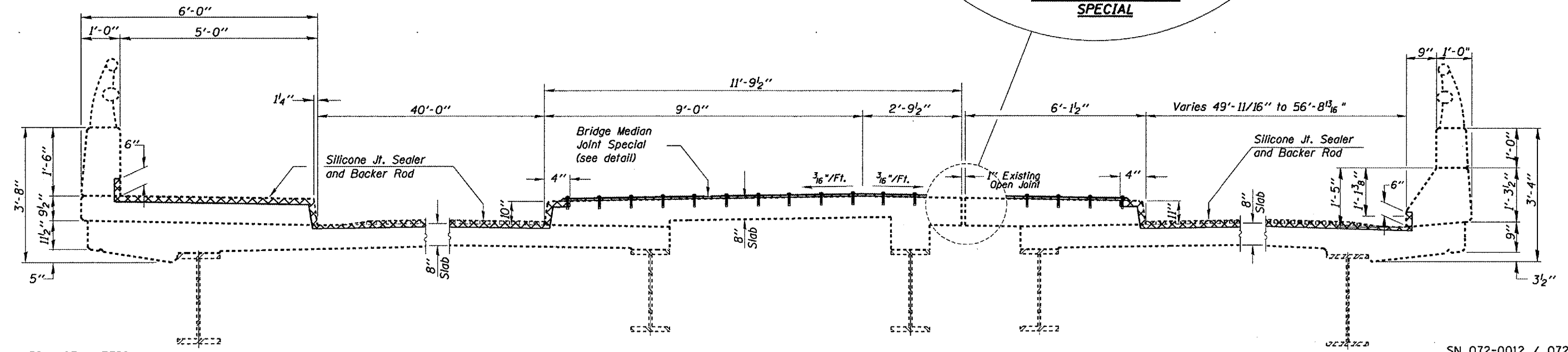
12"w. x .060"th. EPDM. All Transverse & Longitudinal Median Joints only



**EXISTING PREFORMED JOINT SEAL**



**PROPOSED BRIDGE MEDIAN JOINT SPECIAL**



**EXISTING BRIDGE DECK CROSS SECTION**  
(SN. 072-0012 & 072-0133)  
Looking East

**BILL OF MATERIAL**

ITEM	UNIT	QUANTITY
BLAST CLEANING BRIDGE JOINT STEEL	FOOT	687
THERMAL SPRAY (METALIZING) BRIDGE JOINT STEEL	FOOT	643
SILICONE JOINT SEALER	FOOT	687
BRIDGE MEDIAN EPDM SPECIAL	FOOT	890

PLT DATE  
FILE NAME  
PLOT SCALE  
REFERENCE

**NOTE**  
ALL DIMENSIONS TAKEN AT RIGHT ANGLE TO ROADWAY CENTERLINE.

REVISIONS	
NAME	DATE

SN 072-0012 / 072-0133  
Adams St. over Clark St.

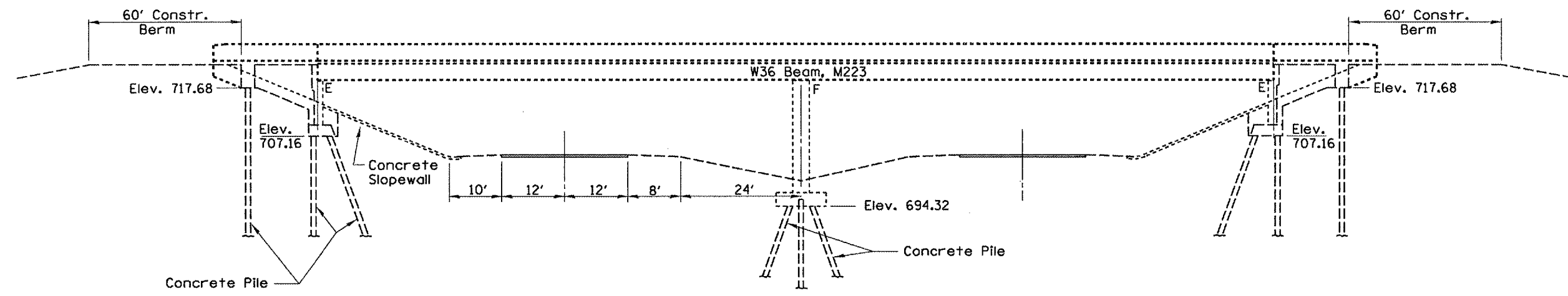
ILLINOIS DEPARTMENT OF TRANSPORTATION

**DECK & JOINT DETAILS**

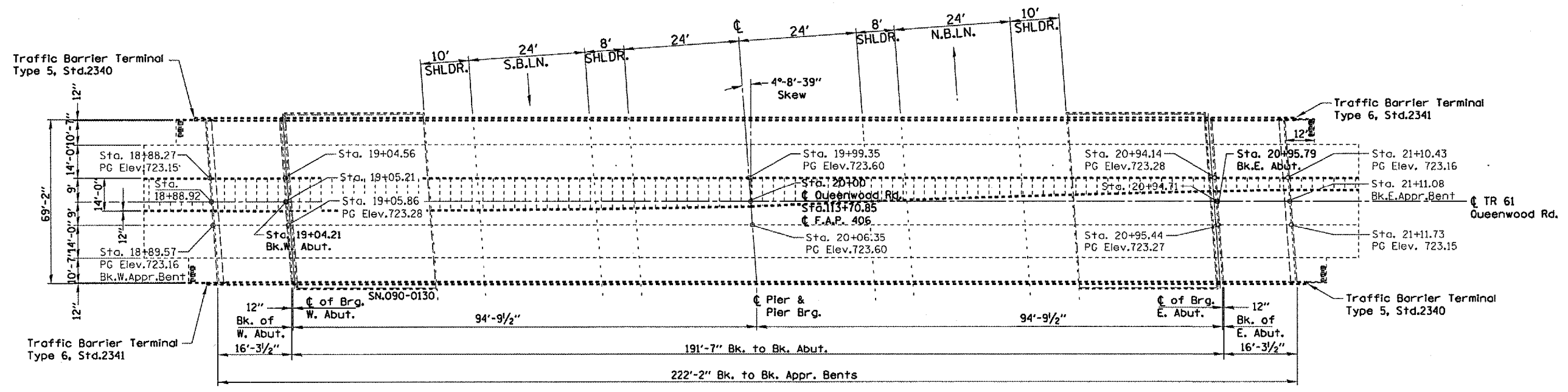
SCALE: VERT. HORIZ. DATE: 08-16-2005

DRAWN BY: CEJ  
CHECKED BY:

F.A.I. RTE.	SECTION	COUNTY	TOTAL SHEETS	SHEET NO.
155		TAZEWELL	27	10
STA. 18+89.42 TO STA. 21+10.58				
FED. ROAD DIST. NO. 1 ILLINOIS FED. AID PROJECT				
• 04 Joint Rep'd 2006				



**ELEVATION**



**PLAN VIEW**

**GENERAL NOTES**

PLAN DIMENSIONS AND DETAILS RELATIVE TO EXISTING STRUCTURE HAVE BEEN TAKEN FROM EXISTING PLANS AND ARE SUBJECT TO NOMINAL CONSTRUCTION VARIATIONS. IT SHALL BE THE CONTRACTOR'S RESPONSIBILITY TO VERIFY SUCH DIMENSIONS AND DETAILS IN THE FIELD AND MAKE NECESSARY APPROVED ADJUSTMENTS PRIOR TO WORK OR THE ORDERING OF MATERIALS. SUCH VARIATIONS SHALL NOT BE CAUSE FOR ADDITIONAL COMPENSATION FOR A CHANGE IN THE SCOPE OF THE WORK. HOWEVER, THE CONTRACTOR WILL BE PAID FOR THE QUANTITY ACTUALLY FURNISHED AT THE UNIT PRICE BID FOR THE PROJECT.

• USE 2-PART RAPID-CURE 100% SILICONE SEALER ONLY - NO OPTION. SEE SPECIAL PROVISIONS.

S.N. 090-0130  
Queenwood Rd.  
over I-155

FOR INFORMATION ONLY

REVISIONS	
NAME	DATE

ILLINOIS DEPARTMENT OF TRANSPORTATION

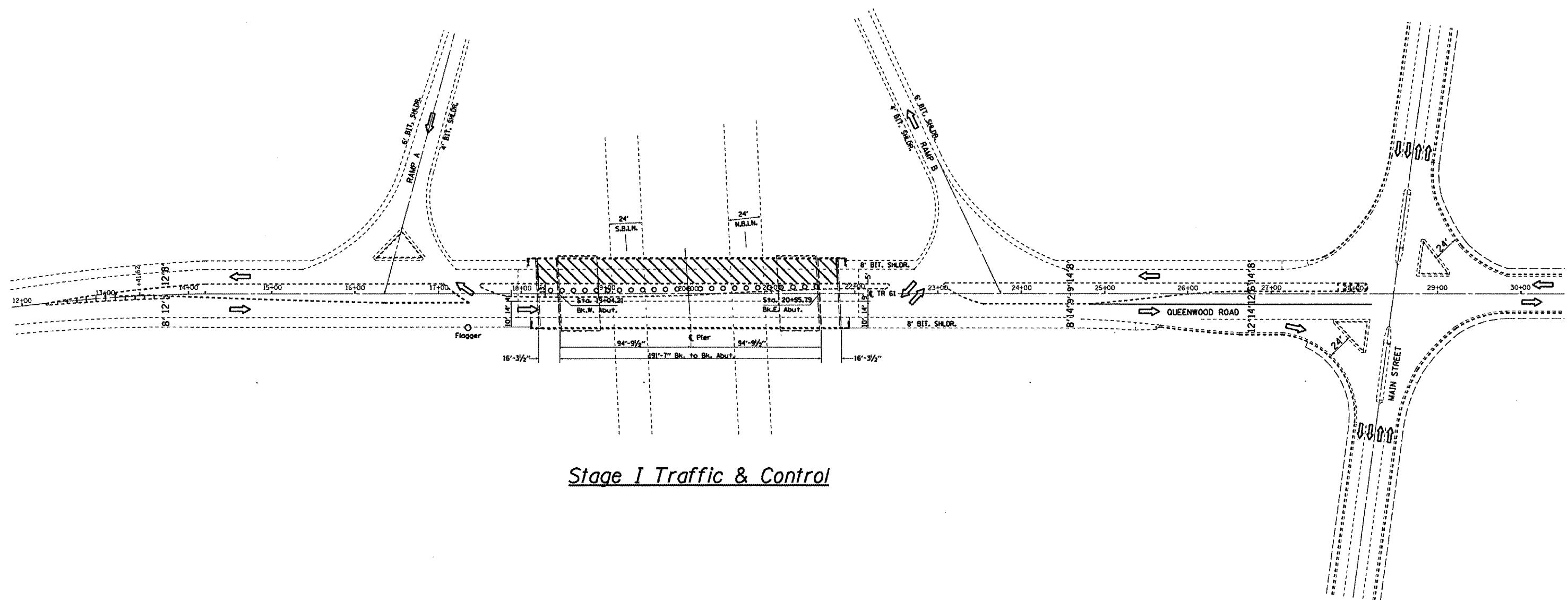
**GENERAL PLAN AND ELEVATION**

SCALE: VERT. HORIZ. DATE 08-30-2004

DRAWN BY CEJ CHECKED BY

PLT DATE: 08/30/04  
FILE NAME: 080804  
PLT SCALE: 1/8"=1'-0"  
REFERENCE: 080804

F.A.I. RTE.	SECTION	COUNTY	TOTAL SHEETS	SHEET NO.
155		TAZEWELL	27	11
STA. 18+89.42 TO STA. 21+10.58				
FED. ROAD DIST. NO. 4 ILLINOIS FED. AID PROJECT				
* 04 Joint Repair 2006				



Stage I Traffic & Control

	Work Area
	Drum w/steady burning light
	Sign
	Type III barricade with flashing lights

NOTE

Refer to Highway Standard 701201 for exact placement of traffic management devices and other clarifications as construction staging symbols and dimensioning were duplicated off of this standard. Additional Type III barricades shall also be placed at each end of the lane closure during work hours.

REVISIONS	
NAME	DATE

ILLINOIS DEPARTMENT OF TRANSPORTATION

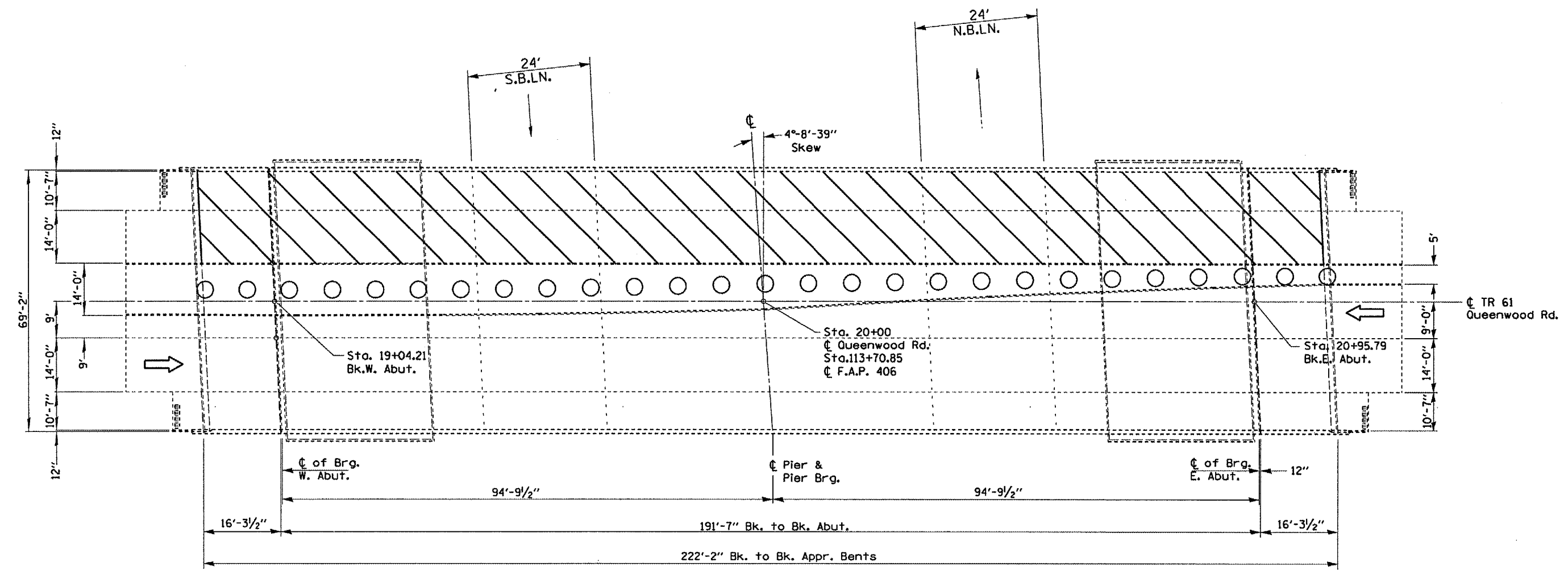
**TRAFFIC STAGING PLAN**

SCALE: VERT. HORIZ. DATE 01-26-2004

DRAWN BY CEJ  
CHECKED BY

DATE  
SCALE  
REFERENCE

F.A. RTE.	SECTION	COUNTY	TOTAL SHEETS	SHEET NO.
155		TAZEWELL	27	12
STA. 18+89.42 TO STA. 21+10.58				
FED. ROAD DIST. NO. 4 ILLINOIS FED. AID PROJECT				
• 04 Joint Report 2006				



Symbols

	Work Area
	Drum w/steady burning light
	Sign
	Type III barricade with flashing lights

Stage I Traffic & Control

NOTE

Refer to Highway Standard 701201 for exact placement of traffic management devices and other clarifications as construction staging symbols and dimensioning were duplicated off of this standard. Additional Type III barricades shall also be placed at each end of the lane closure during work hours.

S.N. 090-0130  
Queenwood Rd.  
over I-155

REVISIONS	
NAME	DATE

ILLINOIS DEPARTMENT OF TRANSPORTATION

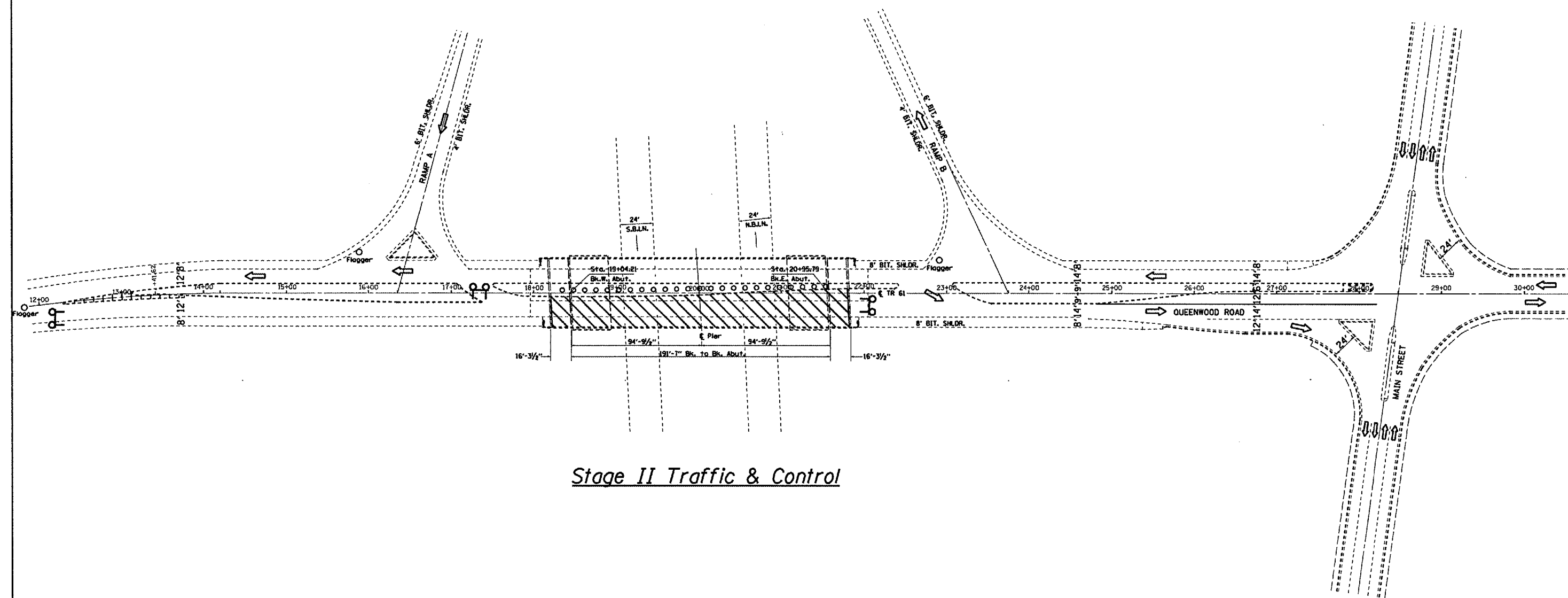
## TRAFFIC STAGING PLAN

SCALE: VERT. \_\_\_\_\_  
HORIZ. \_\_\_\_\_  
DATE 01-26-2004

DRAWN BY CEJ  
CHECKED BY \_\_\_\_\_

PLOT DATE: 1/26/04  
 PLOT SCALE: 1/8"=1'-0"  
 REFERENCE: 01-26-2004

F.A.I. RTE.	SECTION	COUNTY	TOTAL SHEETS	SHEET NO.
155	*	TAZEWELL	27	13
STA. 18+89.42 TO STA. 21+10.58				
FED. ROAD DIST. NO. 4 ILLINOIS FED. AID PROJECT				
* 04 Joint Repair 2006				



Stage II Traffic & Control

	Work Area
	Drum w/steady burning light
	Sign
	Type III barricade with flashing lights

**NOTE**  
 Refer to Highway Standard 701201 for exact placement of traffic management devices and other clarifications as construction staging symbols and dimensioning were duplicated off of this standard.  
 Additional Type III barricades shall also be placed at each end of the lane closure during work hours.

REVISIONS	
NAME	DATE

ILLINOIS DEPARTMENT OF TRANSPORTATION

**TRAFFIC STAGING PLAN**

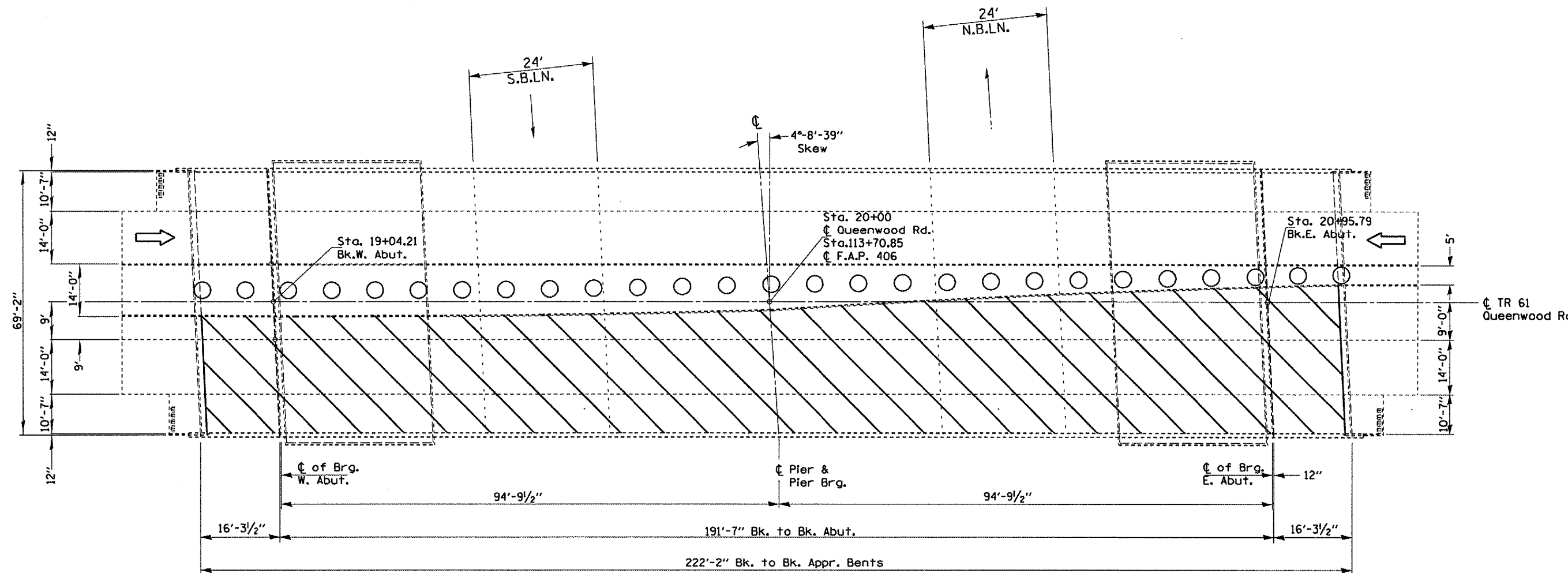
SCALE: VERT. 1"=40'  
 HORIZ. 1"=40'  
 DATE 01-28-2004

DRAWN BY CEJ  
 CHECKED BY

PLOT DATE \* MONTE \*  
 PLOT SCALE \* 1"=40' \*  
 PLOT SCALE \* 1"=40' \*  
 REFERENCE \* REF \*

S.N. 090-0130  
 Queenwood Rd.  
 over I-155

F.A.I. RTE.	SECTION	COUNTY	TOTAL SHEETS	SHEET NO.
155		TAZEWELL	27	14
STA. 18+89.42		TO STA. 21+10.58		
FED. ROAD DIST. NO. 4		ILLINOIS FED. AID PROJECT		
• 04 Joint Repol r 2006				



**Stage II Traffic & Control**

**Symbols**

	Work Area
	Drum w/steady burning light
	Sign
	Type III barricade with flashing lights

**NOTES**

Refer to Highway Standard 701201 for exact placement of traffic management devices and other clarifications as construction staging symbols and dimensioning were duplicated off of this standard. Additional Type III barricades shall also be placed at each end of the lane closure during work hours.

S.N. 090-0130  
Queenwood Rd.  
over I-155

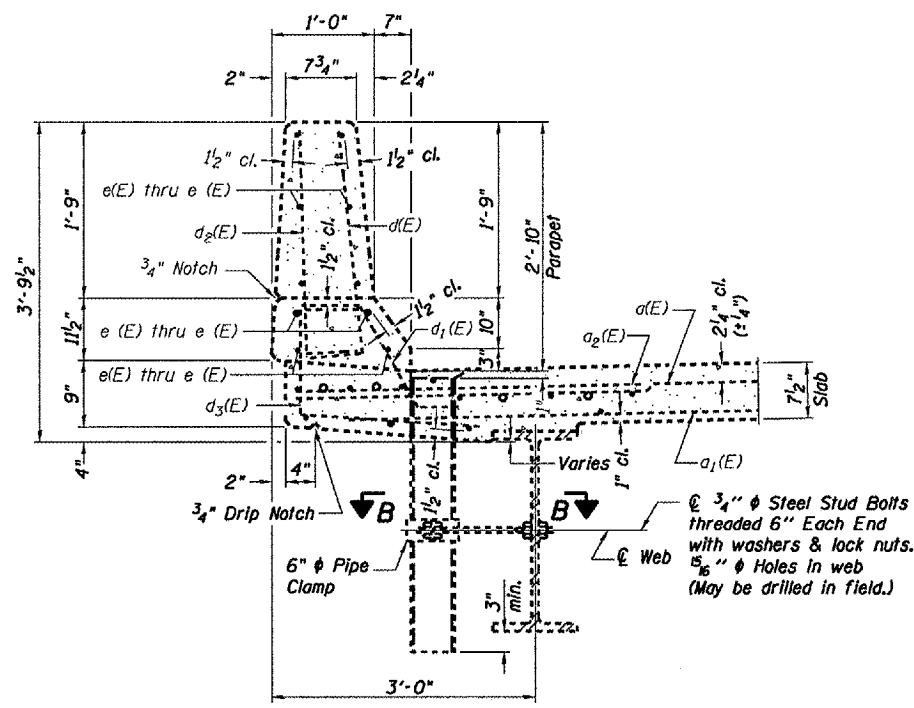
REVISIONS	
NAME	DATE

ILLINOIS DEPARTMENT OF TRANSPORTATION  
**TRAFFIC STAGING PLAN**  
SCALE: VERT. 1"=20'  
HORIZ. 1"=40'  
DATE 01-28-2004  
DRAWN BY CEJ  
CHECKED BY

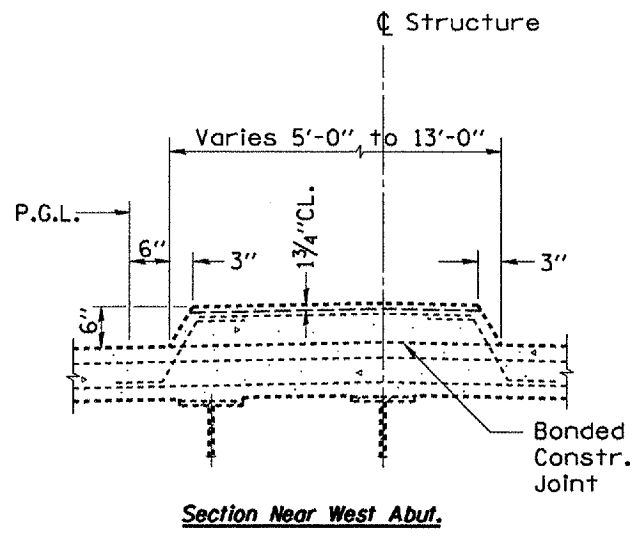
PLOT DATE \* NOTES  
FILE NAME \* FILES  
PLOT SCALE \* SCALES  
REFERENCE \* REFS



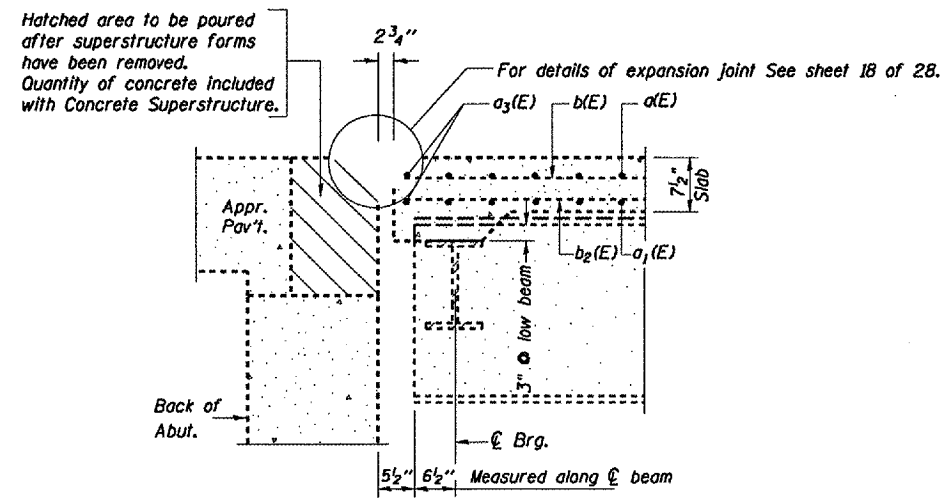
F.A.I. RTE.	SECTION	COUNTY	TOTAL SHEETS	SHEET NO.
155		TAZEWELL	27	16
STA. 18+89.42		TO STA. 21+10.58		
FED. ROAD DIST. NO. 4 ILLINOIS FED. AID PROJECT				
• 04 Joint Repair 2006				



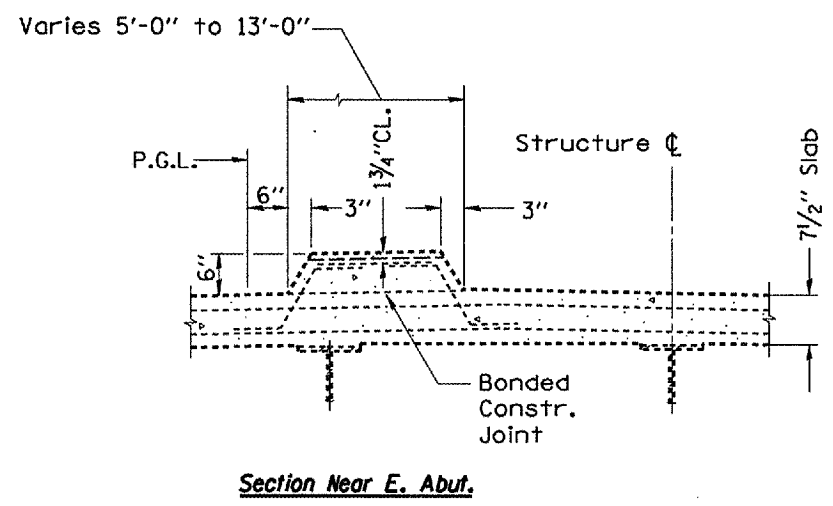
**SECTION THRU PARAPET**



**Section Near West Abut.**



**SECTION A-A**



**Section Near E. Abut.**

FOR INFORMATION ONLY

DATE  
FILE NAME  
PLOT SCALE  
REFERENCE

REVISIONS	
NAME	DATE

ILLINOIS DEPARTMENT OF TRANSPORTATION  
**SUPERSTRUCTURE DETAILS**  
SCALE: VERT. DATE 06-16-2005  
DRAWN BY CEJ  
CHECKED BY

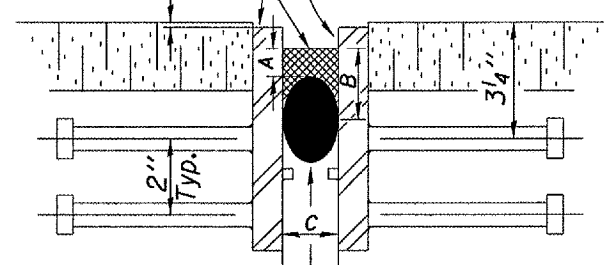
S.N. 090-0130  
Queenwood Rd.  
over I-155



F.A.I. RTE.	SECTION	COUNTY	TOTAL SHEETS	SHEET NO.
155		TAZEWELL	27	17
STA. 18+89.42 TO STA. 21+10.58				
FED. ROAD DIST. NO. 4 ILLINOIS FED. AID PROJECT				
• 04 Joint Repair 2006				

All exposed and accessible steel surfaces shall be blasted to near white condition, then metalized. In sidewalk, median, and parapet wall areas w/o steel, the concrete shall be cleaned by blasting and blowing clean until dust-free and dry prior to sealant application. Metalizing of concrete is not required.

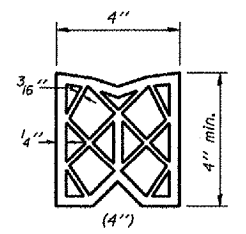
Two-Part, Rapid-Cure 100% Silicone Jt. Sealer



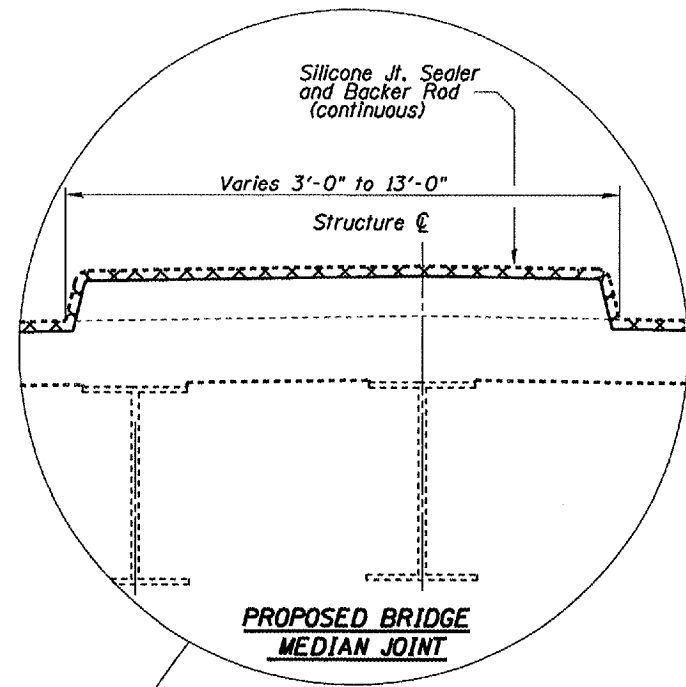
Backer Rod diameter 25 % greater than joint opening at time of installation.

**NOTE**  
 Dimension "B" min. = 2 x "A" (where "A" = 3/8" to 5/8")  
 Height of bonding surface should be twice the sealant min. thickness.  
 Dimension "C" varies between 2"-2 1/2".

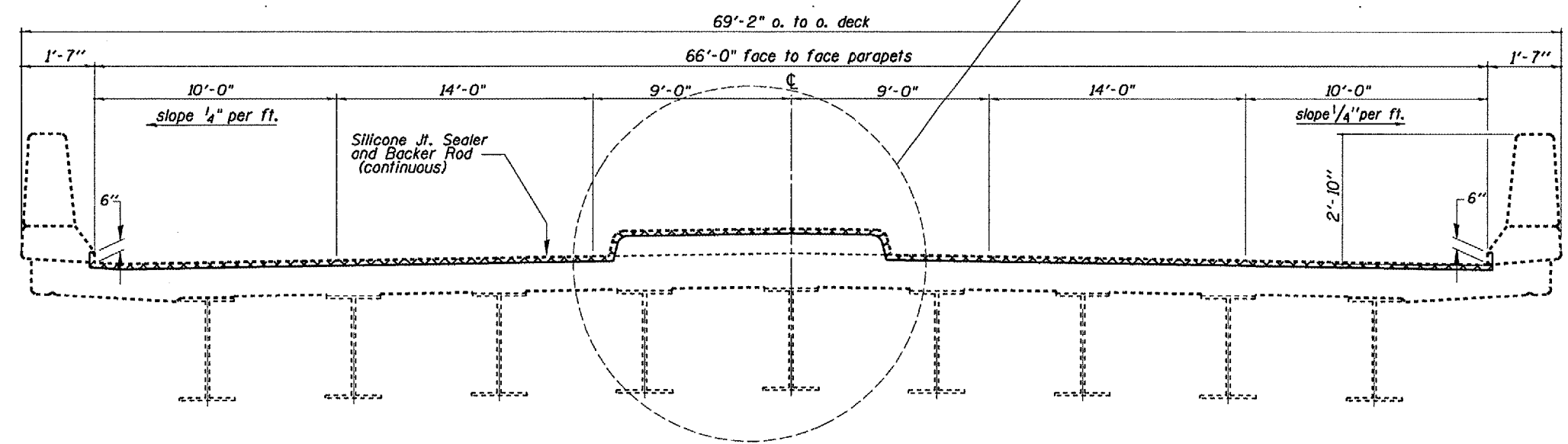
**PROPOSED BRIDGE JOINT SEALER DETAIL**



**EXISTING PREFORMED JOINT SEAL**



**PROPOSED BRIDGE MEDIAN JOINT**



**EXISTING BRIDGE DECK CROSS SECTION**  
 SN. 090-0130 (Looking East near Abutment)

**BILL OF MATERIAL**

ITEM	UNIT	QUANTITY
BLAST CLEANING BRIDGE JOINT STEEL	FOOT	141
THERMAL SPRAYING (METALIZING) BRIDGE JOINT STEEL	FOOT	132
SILICONE JOINT SEALER	FOOT	141

PLOT DATE \* NOTES  
 FILE NAME \* WFLS  
 PLOT SCALE \* 800/1  
 REFERENCE \* REF'S

REVISIONS	
NAME	DATE

ILLINOIS DEPARTMENT OF TRANSPORTATION

**DECK & JOINT DETAILS**

SCALE: VERT. 1"=1'-0"  
 HORIZ. 1"=10'-0"  
 DATE 08-16-2005

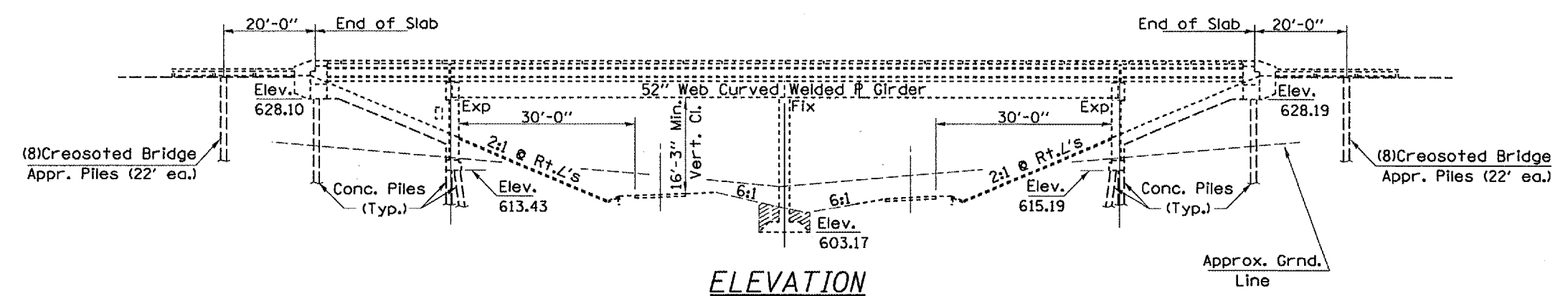
S.N. 090-0130  
 Queenwood Rd.  
 over I-155

DRAWN BY CEJ  
 CHECKED BY

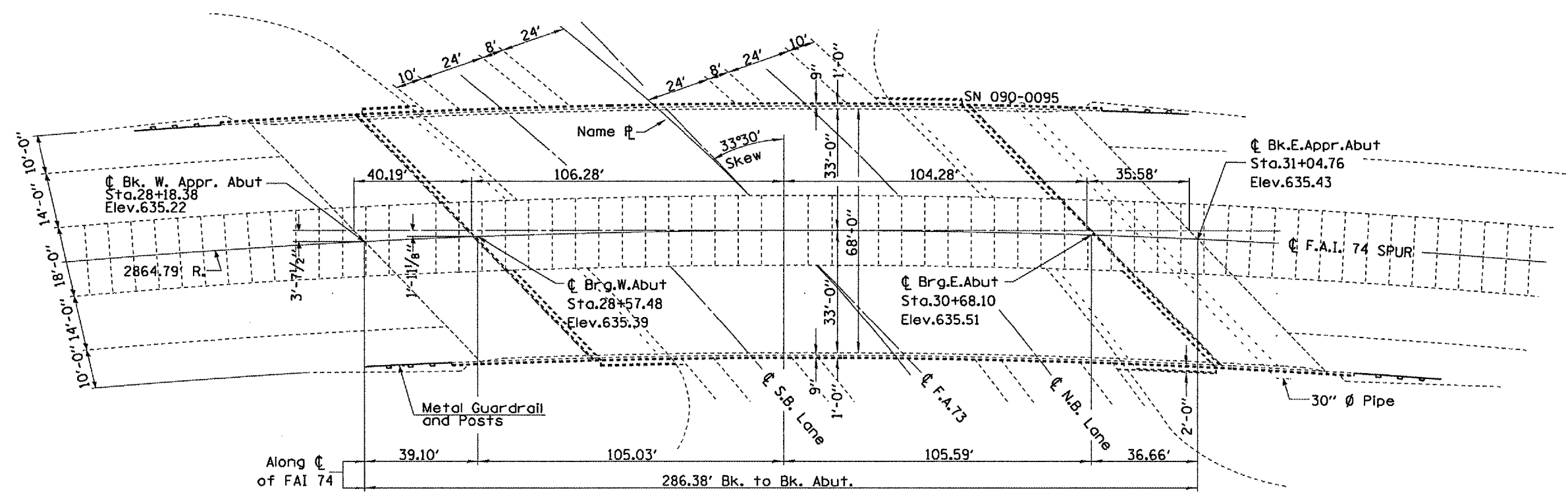
**NOTE**  
 ALL DIMENSIONS TAKEN AT RIGHT ANGLE TO ROADWAY CENTERLINE.

F.A.I. RTE.	SECTION	COUNTY	TOTAL SHEETS	SHEET NO.
155	-	TAZEWELL	27	18
STA. 28+18.38		TO STA. 31+04.76		
FED. ROAD DIST. NO. 4 ILLINOIS FED. AID PROJECT				
• 04 Joint Repair 2006				

B.M. #29A Sta. 716+10  
Chiseled "□" in S. end of  
W. headwall A.R.C.  
Elev. 616.43



**ELEVATION**



**PLAN VIEW**

**GENERAL NOTES**

PLAN DIMENSIONS AND DETAILS RELATIVE TO EXISTING STRUCTURE HAVE BEEN TAKEN FROM EXISTING PLANS AND ARE SUBJECT TO NOMINAL CONSTRUCTION VARIATIONS. IT SHALL BE THE CONTRACTOR'S RESPONSIBILITY TO VERIFY SUCH DIMENSIONS AND DETAILS IN THE FIELD AND MAKE NECESSARY APPROVED ADJUSTMENTS PRIOR TO WORK OR THE ORDERING OF MATERIALS. SUCH VARIATIONS SHALL NOT BE CAUSE FOR ADDITIONAL COMPENSATION FOR A CHANGE IN THE SCOPE OF THE WORK. HOWEVER, THE CONTRACTOR WILL BE PAID FOR THE QUANTITY ACTUALLY FURNISHED AT THE UNIT PRICE BID FOR THE PROJECT.

- USE 2-PART RAPID-CURE 100% SILICONE SEALER ONLY - NO OPTION. SEE SPECIAL PROVISIONS.

**FOR INFORMATION ONLY**

PLT NAME  
SCALE  
DATE  
REFERENCE

REVISIONS	
NAME	DATE

ILLINOIS DEPARTMENT OF TRANSPORTATION

**PLAN AND ELEVATION**

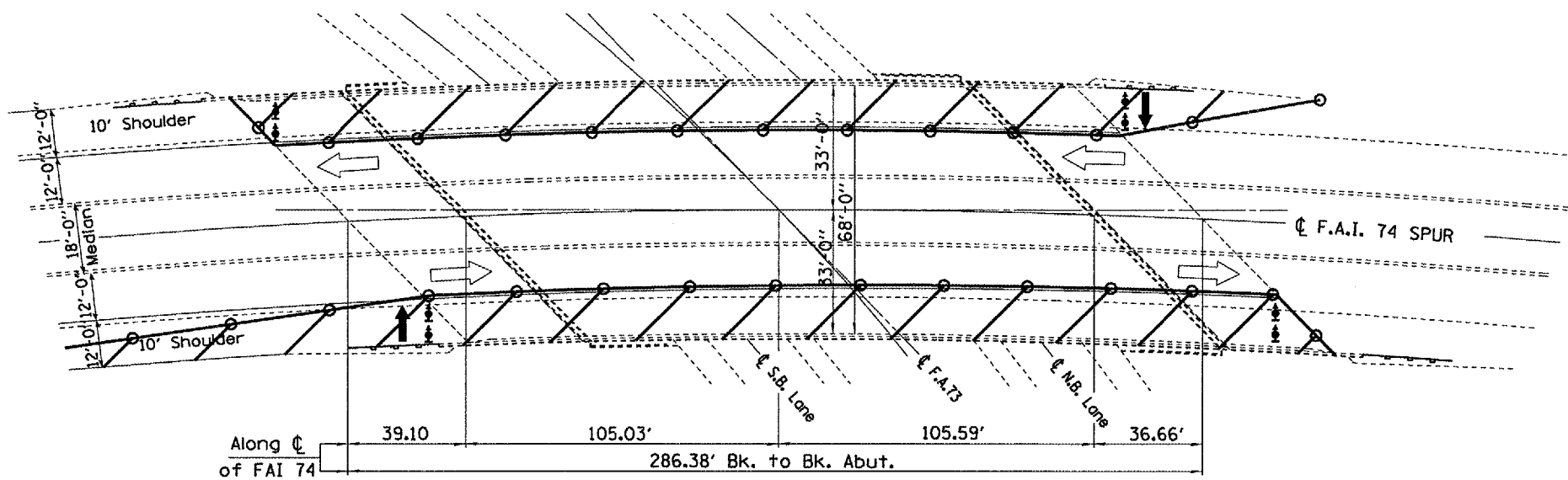
SCALE: VERT. 1"=10'  
HORIZ. 1"=40'

DATE 06-22-2005

DRAWN BY CEJ  
CHECKED BY

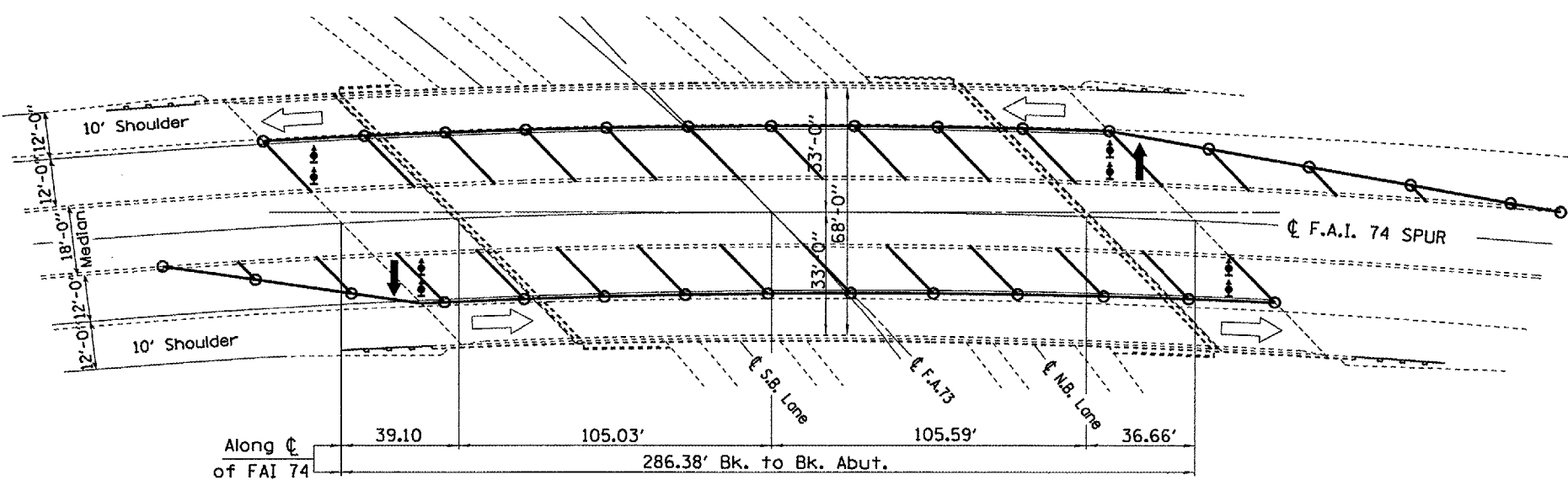
SN 090-0095  
Il. 122E over I-155

F.A.I. RTE.	SECTION	COUNTY	TOTAL SHEETS	SHEET NO.
155		TAZEWELL	27	19
STA. 28+18.38		TO STA. 31+04.76		
FED. ROAD DIST. NO. 4 ILLINOIS FED. AID PROJECT				
• 04 Joint Repair 2006				



Stage I  
Traffic & Control

- Arrow Board
- Work Area
- Sign
- Direction Indicator barricade with steady burn monodirectional light
- Cone, Drum, or Barricade
- Flagger w/traffic control sign
- Type III barricade w/flashing lights



Stage II  
Traffic & Control

**NOTE**  
Refer to Highway Standard 701601 for exact placement of traffic management devices and other clarifications as construction staging symbols and dimensioning were duplicated off of this standard.

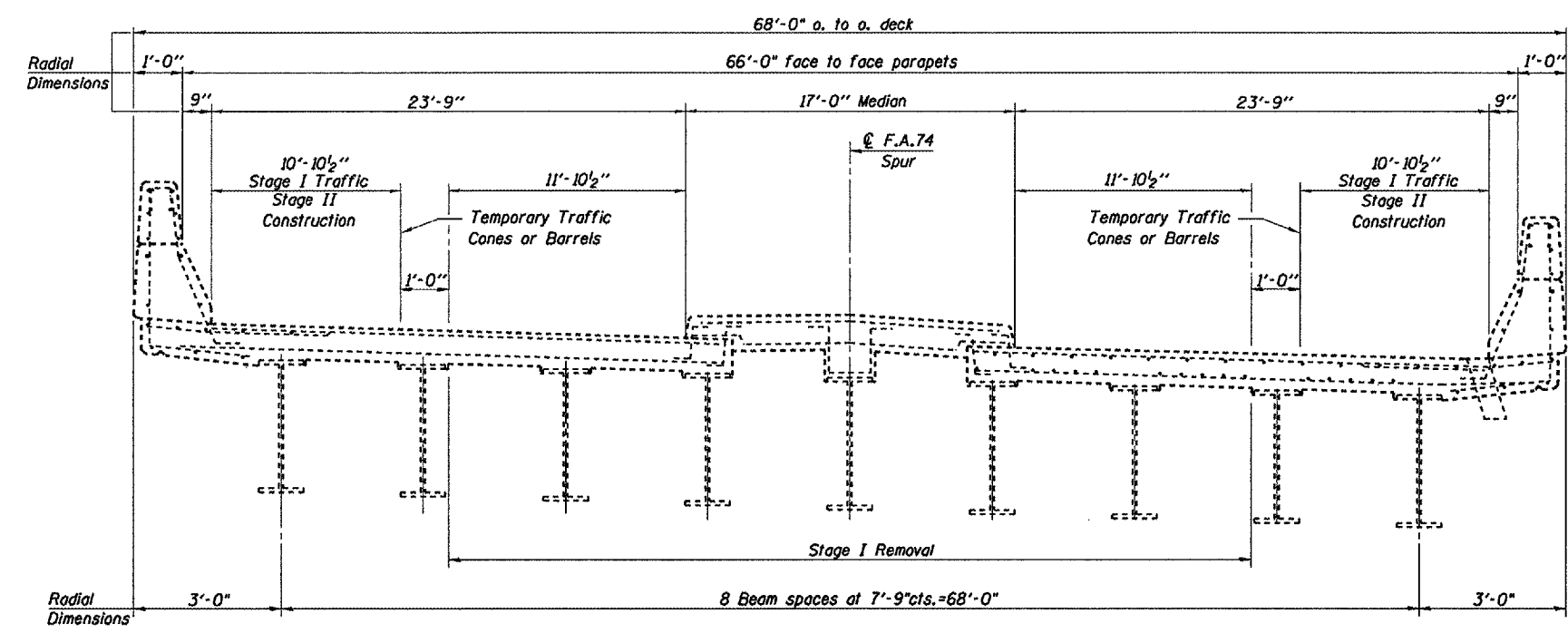
SN 090-0095  
Il. 122E over I-155

REVISIONS		ILLINOIS DEPARTMENT OF TRANSPORTATION
NAME	DATE	
		TRAFFIC STAGING PLAN

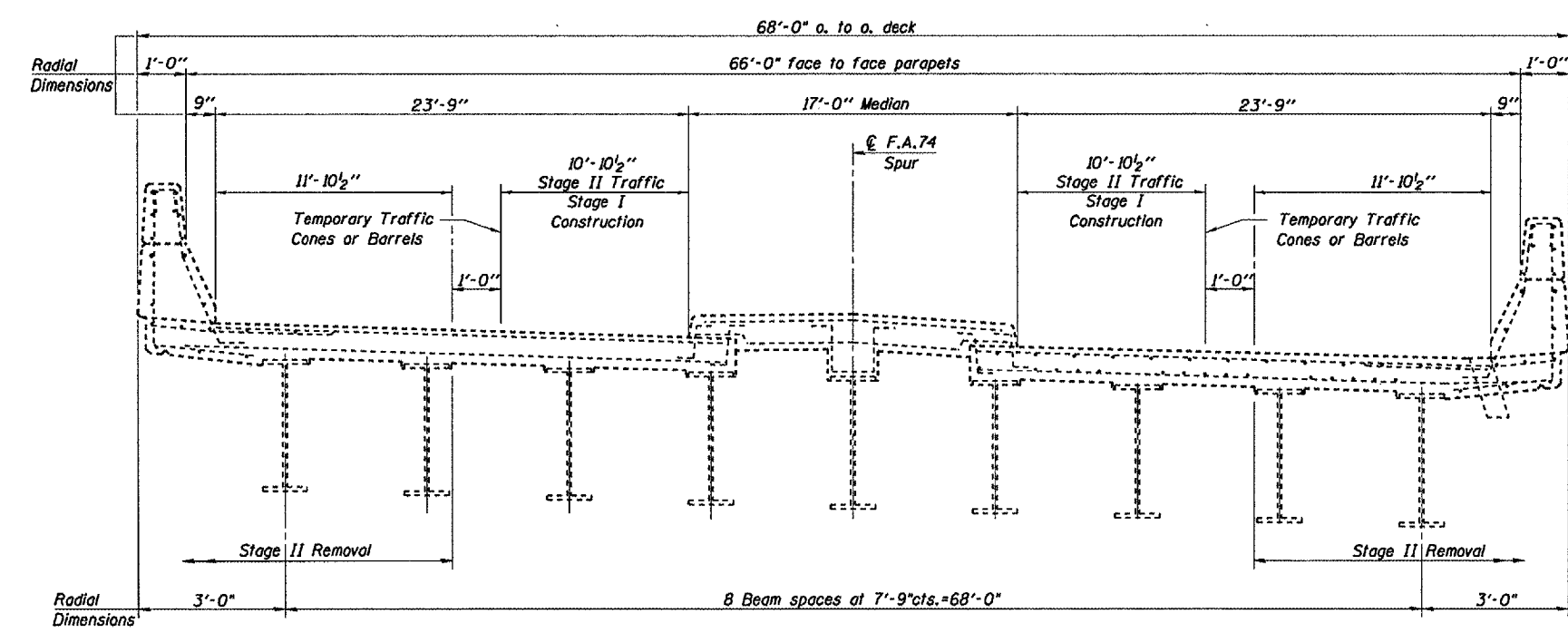
SCALE: VERT.      DRAWN BY CEJ  
 HORIZ.              CHECKED BY  
 DATE 06-24-2005

PLT DATE \* SHEETS \*  
 FILE NAME \* SHEETS \*  
 PLOT SCALE \* SCALES \*  
 REFERENCE \* REF \*

F.A.I. RTE.	SECTION	COUNTY	TOTAL SHEETS	SHEET NO.
155		TAZEWELL	27	20
STA. 28+18.38		TO STA. 31+04.76		
FED. ROAD DIST. NO. 4 ILLINOIS FED. AID PROJECT				
• 04 Joint Repair 2005				



**CROSS SECTION**  
(Stage I)



**CROSS SECTION**  
(Stage II)

SN 090-0095  
Il. 122E over I-155

REVISIONS	
NAME	DATE

ILLINOIS DEPARTMENT OF TRANSPORTATION

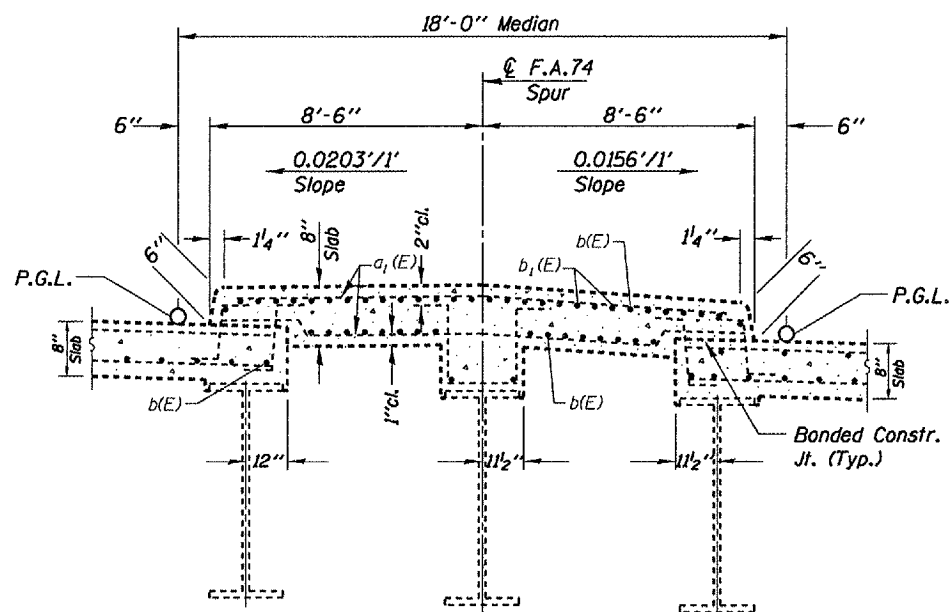
**STAGE REMOVAL AND CONSTRUCTION**

SCALE: VERT. \_\_\_\_\_  
HORIZ. \_\_\_\_\_  
DATE 06-29-2005

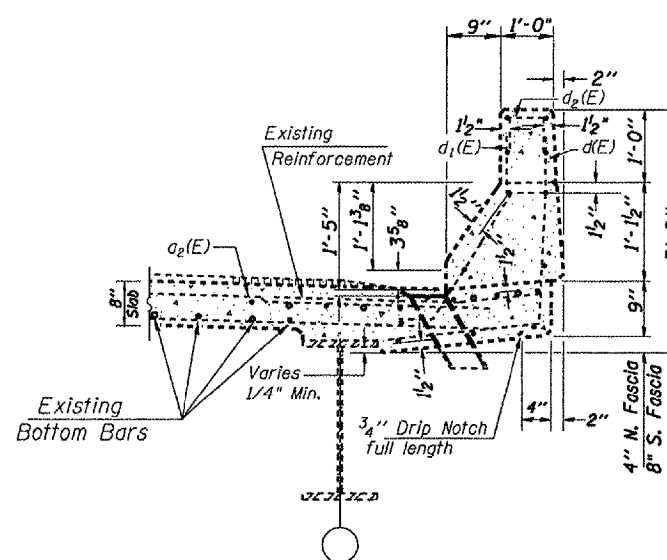
DRAWN BY CEJ  
CHECKED BY \_\_\_\_\_

PLOT DATE \* DATE \*  
PLOT SCALE \* SCALE \*  
REFERENCE \* REF \*

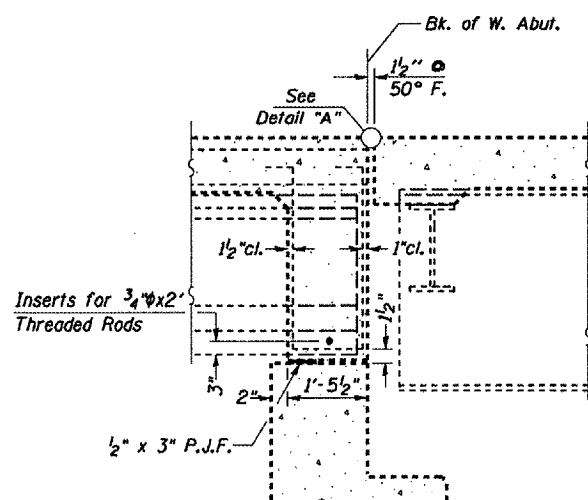
F.A.I. RTE.	SECTION	COUNTY	TOTAL SHEETS	SHEET NO.
155		TAZEWELL	27	21
STA. 28+18.38		TO STA. 31+04.76		
FED. ROAD DIST. NO. 4		ILLINOIS FED. AID PROJECT		
* 04 Joint Repair 2006				



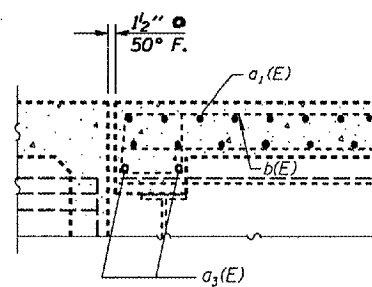
**SECTION THRU MEDIAN**  
(Looking East)



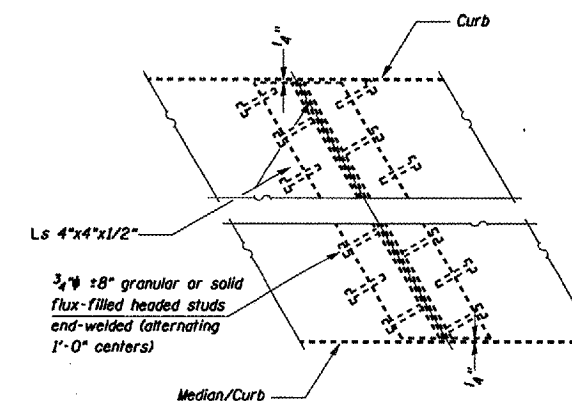
**SECTION THRU PARAPET**



**SECTION A-A**



**SECTION C-C**



**Plan of Expansion Angles**

REVISIONS	
NAME	DATE

ILLINOIS DEPARTMENT OF TRANSPORTATION  
**SUPERSTRUCTURE DETAILS**  
 SCALE: VERT. \_\_\_\_\_  
 HORIZ. \_\_\_\_\_  
 DATE 06-30-2005  
 DRAWN BY CEJ  
 CHECKED BY \_\_\_\_\_

FOR INFORMATION ONLY

PLT DATE \* DATE \*  
 PLT SCALE \* SCALE \*  
 REFERENCE \* REFERENCE \*  
 REFERENCE \* REFERENCE \*

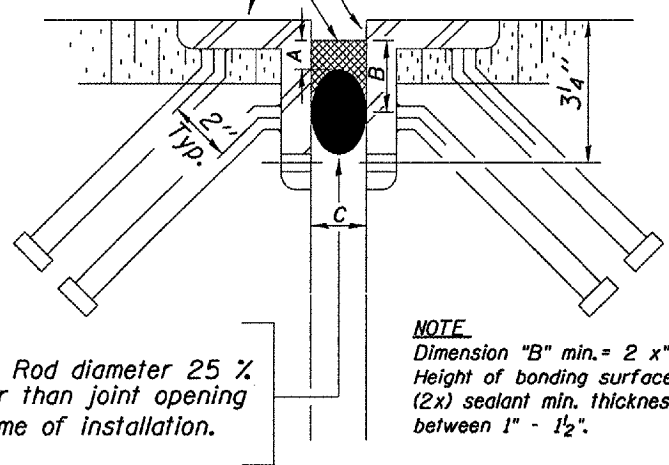
SN 090-0095  
 Il. 122E over I-155

F.A.I. RTE.	SECTION	COUNTY	TOTAL SHEETS	SHEET NO.
155		TAZEWELL	27	22
STA. 18+89.42		TO STA. 21+10.58		
FED. ROAD DIST. NO. 4		ILLINOIS FED. AID PROJECT		

\* 04 Joint Repair 2006

Two-Part, Rapid-Cure 100% Silicone Jt. Sealer

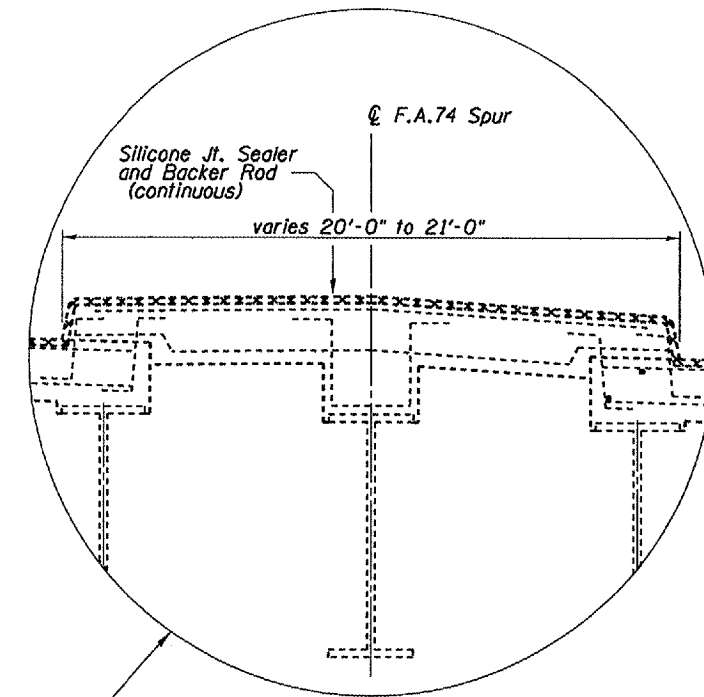
All exposed and accessible steel surfaces shall be blasted to near white condition, then metalized. In sidewalk, median, and parapet wall areas w/o steel, the concrete shall be cleaned by blasting and blowing clean until dust-free and dry prior to sealant application. Metalizing of concrete is not required.



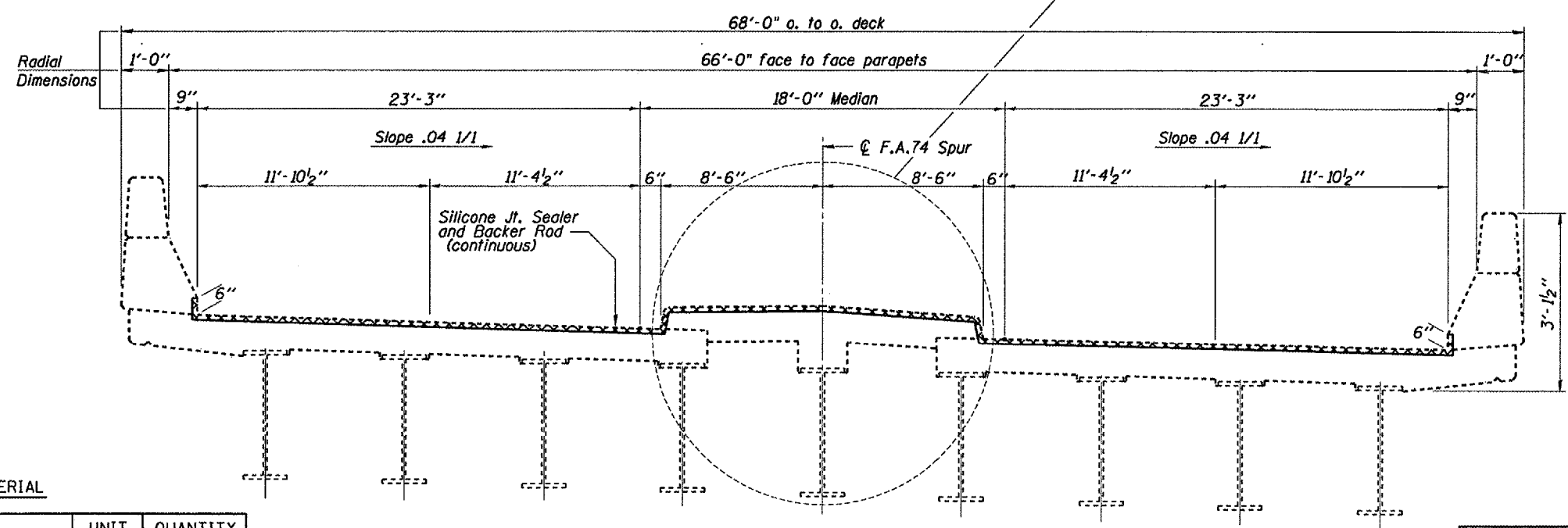
Backer Rod diameter 25 % greater than joint opening at time of installation.

**NOTE**  
Dimension "B" min. = 2 x "A" (where "A" = 3/8" to 5/8"). Height of bonding surface should be approximately (2x) sealant min. thickness. Dimension "C" varies between 1" - 1 1/2".

**PROPOSED BRIDGE JOINT SEALER DETAIL**



**PROPOSED MEDIAN JOINT DETAIL**



**EXISTING BRIDGE DECK CROSS SECTION**  
SN. 090-0095 (Looking East near Abutment)

**BILL OF MATERIAL**

ITEM	UNIT	QUANTITY
BLAST CLEANING BRIDGE JOINT STEEL	FOOT	165
THERMAL SPRAYING (METALIZING) BRIDGE JOINT STEEL	FOOT	115
SILICONE JOINT SEALER	FOOT	165
BITUMINOUS REMOVAL (MISCELLANEOUS)	SQ.YD.	8.0
BITUMINOUS MIXTURE FOR PATCHING	TON	1.0

DATE  
FILE NAME  
PLOT SCALE  
REFERENCE

REVISIONS	
NAME	DATE

SN 090-0095  
Il. 122E over I-155

ILLINOIS DEPARTMENT OF TRANSPORTATION

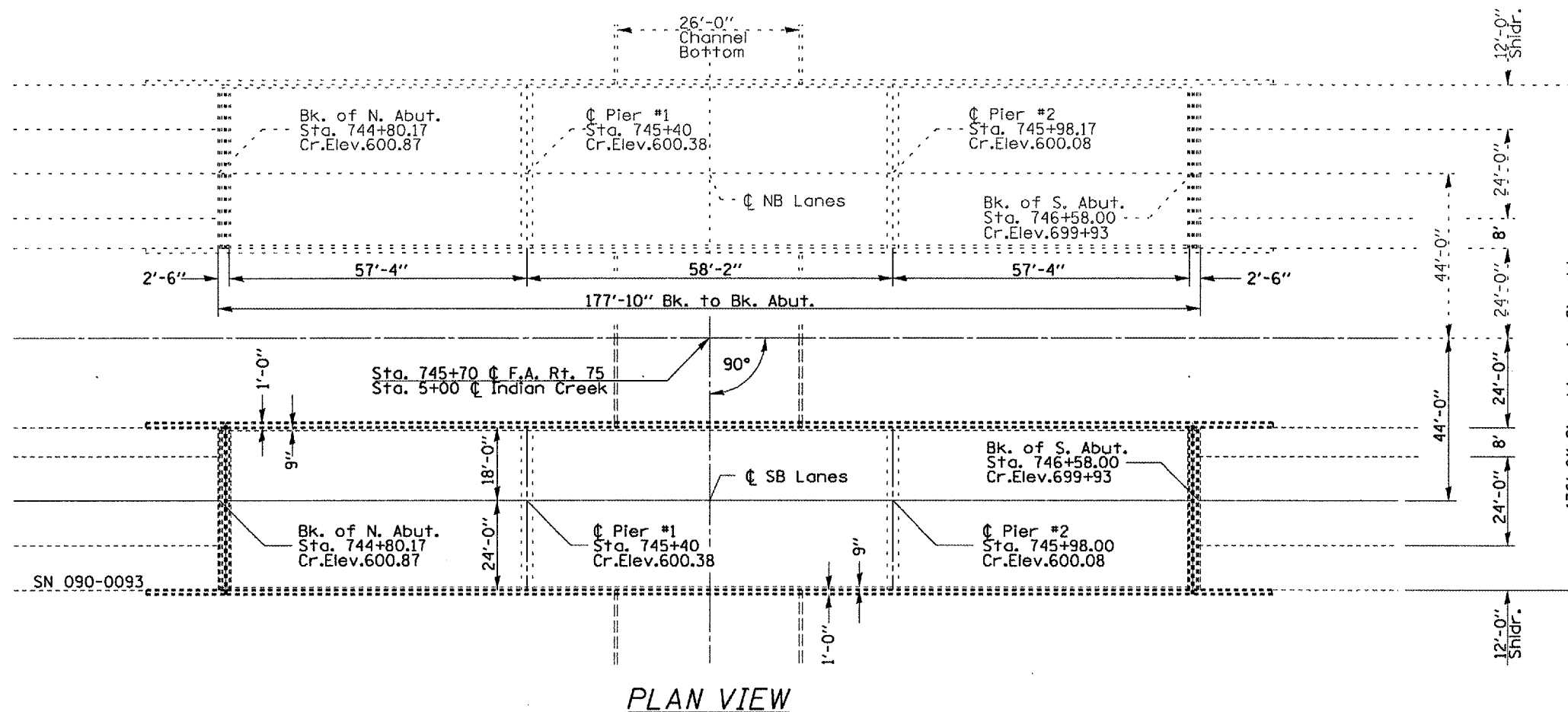
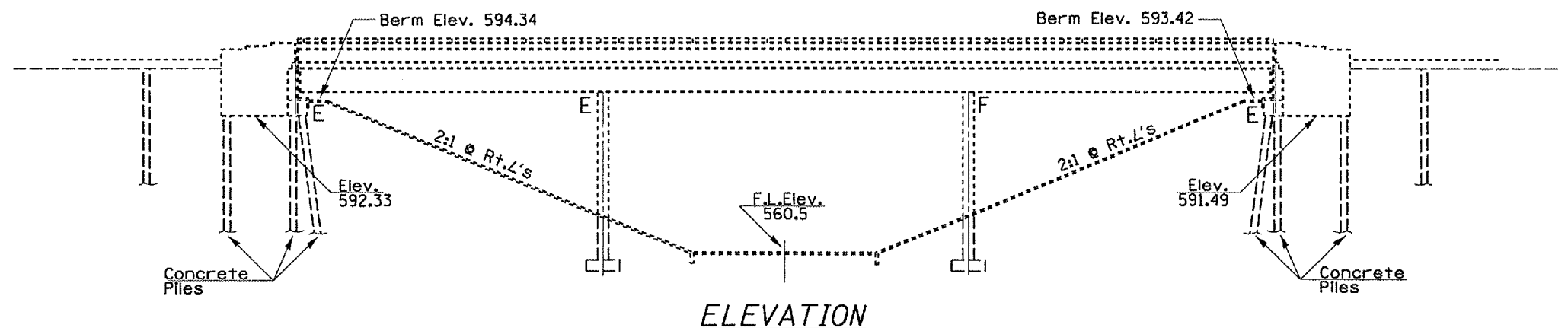
**DECK & JOINT DETAILS**

SCALE: VERT. \_\_\_\_\_  
HORIZ. \_\_\_\_\_  
DATE 08-16-2005

DRAWN BY CEJ  
CHECKED BY \_\_\_\_\_

**NOTE**  
ALL DIMENSIONS TAKEN AT RIGHT ANGLE TO ROADWAY CENTERLINE.

F.A.I. RTE.	SECTION	COUNTY	TOTAL SHEETS	SHEET NO.
155	-	TAZEWELL	27	23
STA. 744+80.17 TO STA. 746+58.00				
FED. ROAD DIST. NO. 4 ILLINOIS FED. AID PROJECT				
• 04 Joint Repair 2006				



**GENERAL NOTES**

PLAN DIMENSIONS AND DETAILS RELATIVE TO EXISTING STRUCTURE HAVE BEEN TAKEN FROM EXISTING PLANS AND ARE SUBJECT TO NOMINAL CONSTRUCTION VARIATIONS. IT SHALL BE THE CONTRACTOR'S RESPONSIBILITY TO VERIFY SUCH DIMENSIONS AND DETAILS IN THE FIELD AND MAKE NECESSARY APPROVED ADJUSTMENTS PRIOR TO WORK OR THE ORDERING OF MATERIALS. SUCH VARIATIONS SHALL NOT BE CAUSE FOR ADDITIONAL COMPENSATION FOR A CHANGE IN THE SCOPE OF THE WORK. HOWEVER, THE CONTRACTOR WILL BE PAID FOR THE QUANTITY ACTUALLY FURNISHED AT THE UNIT PRICE BID FOR THE PROJECT.

- USE 2-PART RAPID-CURE 100% SILICONE SEALER ONLY - NO OPTION. SEE SPECIAL PROVISIONS.

FOR INFORMATION ONLY

REVISIONS	
NAME	DATE

ILLINOIS DEPARTMENT OF TRANSPORTATION

**PLAN AND ELEVATION**

SCALE: VERT. 1"=10'  
HORIZ. 1"=40'

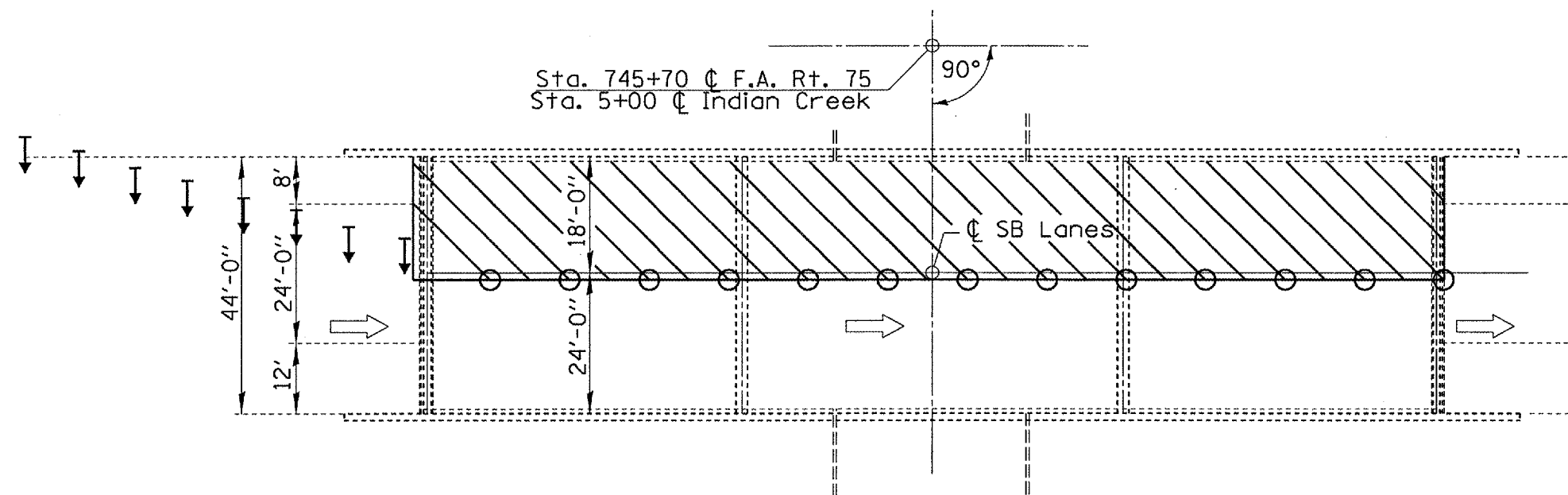
DATE 07-14-2005

DRAWN BY CEJ  
CHECKED BY


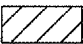
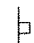



SN 090-0093  
I-155 SB over  
Indian Crk.

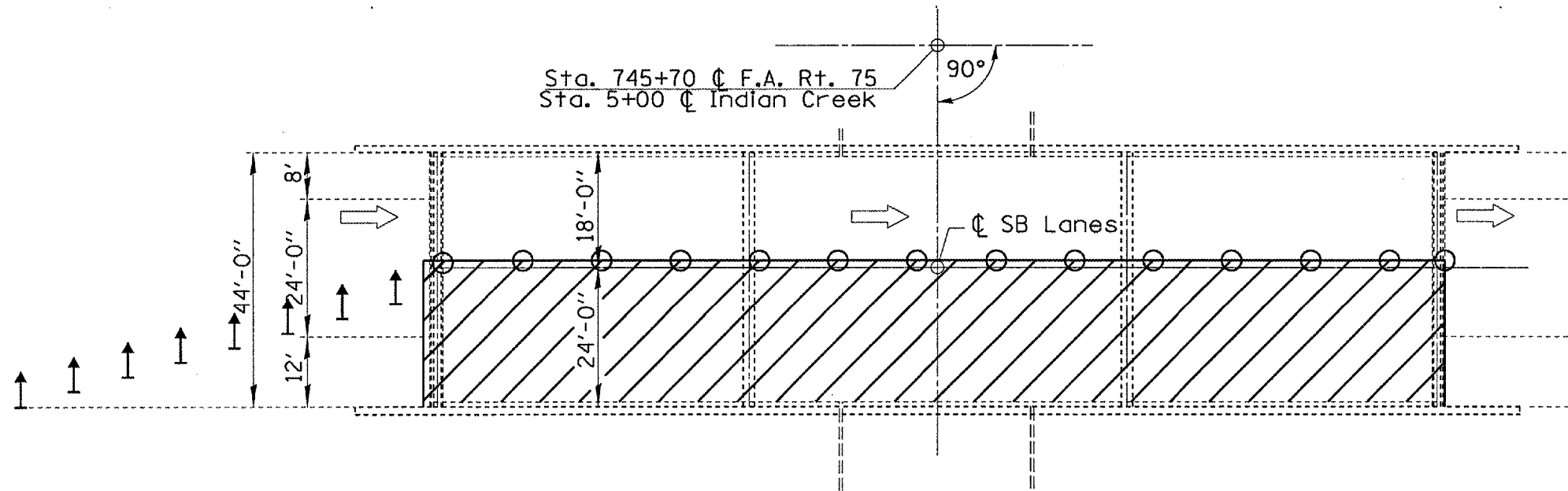
PLT DATE \* NOTES  
FILE NAME \* REF#  
PLOT SCALE \* SCALES  
REFERENCE \* REF#

F.A. RTE.	SECTION	COUNTY	TOTAL SHEETS	SHEET NO.
155	*	TAZEWELL	27	24
STA. 744+80.17 TO STA. 746+58.00				
FED. ROAD DIST. NO. 4 ILLINOIS FED. AID PROJECT				
* 04 Joint Repair 2006				



Stage I  
Traffic & Control

-  Arrow Board
-  Work Area
-  Sign
-  Direction Indicator Barrier
-  Cone, Drum, or Barricade
-  Flagger w/Traffic Control Sign



Stage II  
Traffic & Control

NOTE:  
Refer to Highway Standard 701101 for exact placement of traffic management devices and other clarifications as construction staging symbols and dimensioning were duplicated off of this standard. Reference Highway Standard 701406 for joint removal and replacement.

SN 090-0093  
I-155 SB over  
Indian Crk.

REVISIONS	
NAME	DATE

ILLINOIS DEPARTMENT OF TRANSPORTATION

TRAFFIC  
STAGING PLAN

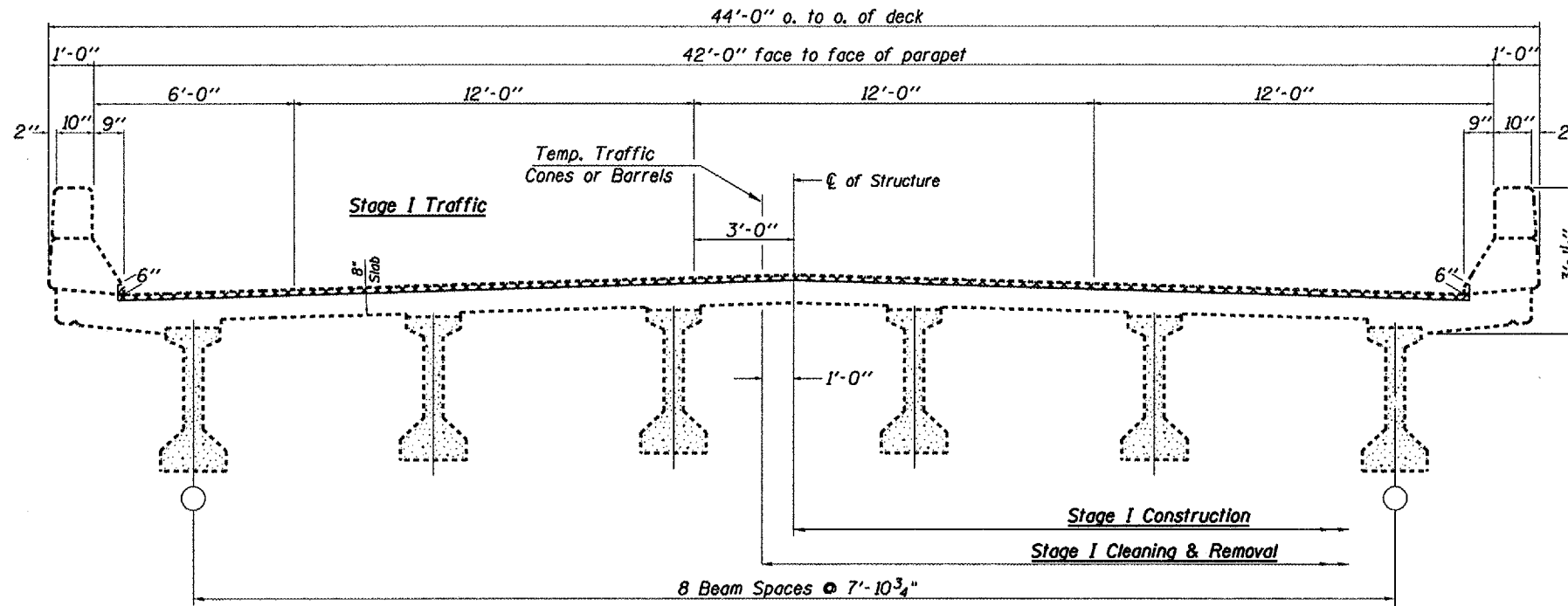
VERT.  
SCALE: HORIZ.  
DATE 06-24-2005

DRAWN BY CEJ  
CHECKED BY

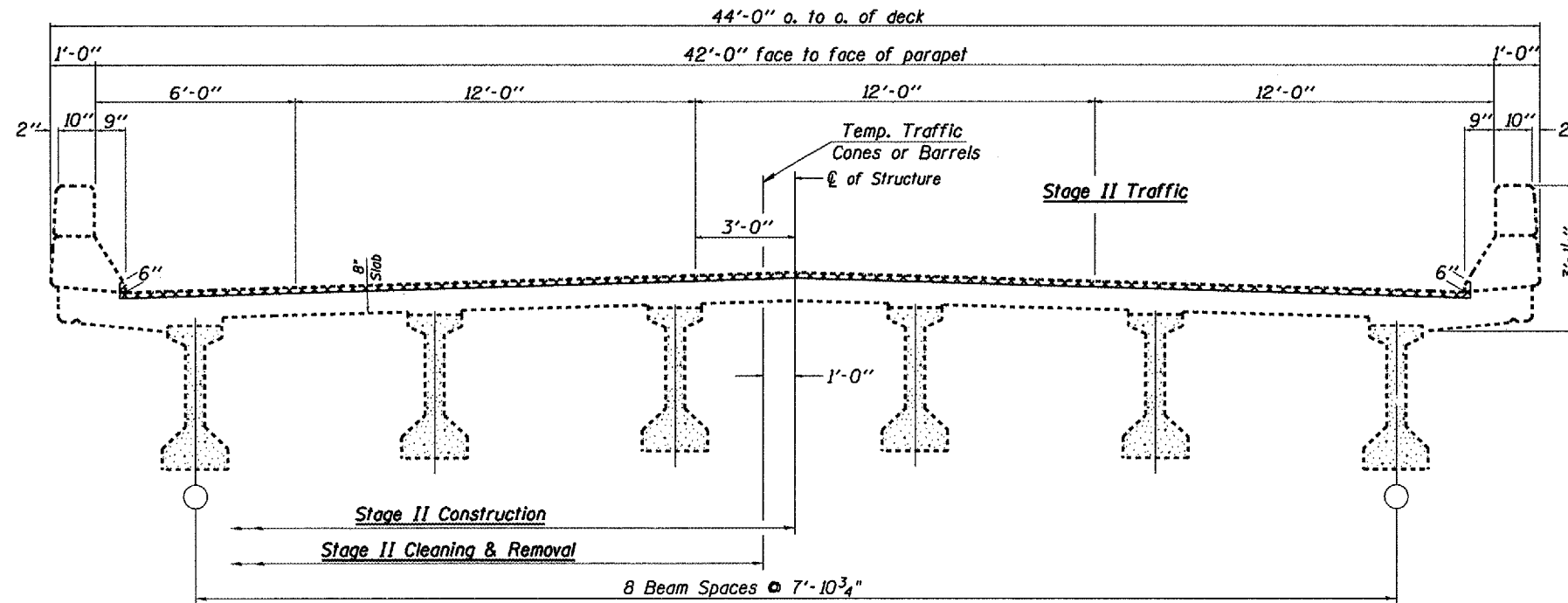
PLOT DATE: \* DATE \*  
FILE NAME: \* #FILE \*  
PLOT SCALE: \* SCALE \*  
REFERENCE: \* REF \*



F.A.I. RTE.	SECTION	COUNTY	TOTAL SHEETS	SHEET NO.
155	-	TAZEWELL	27	25
STA. 744+80.17 TO STA. 746+58.00				
FED. ROAD DIST. NO. 4 ILLINOIS FED. AID PROJECT				
• D4 Joint Repair 2006				



**CROSS SECTION**  
(Looking S.B. in the direction of traffic)



**CROSS SECTION**  
(Looking S.B. in the direction of traffic)

SN 090-0093  
I-155 SB over  
Indian Crk.

REVISIONS	
NAME	DATE

ILLINOIS DEPARTMENT OF TRANSPORTATION

**TRAFFIC STAGING PLAN**

SCALE: VERT.  
HORIZ.  
DATE 06-29-2005

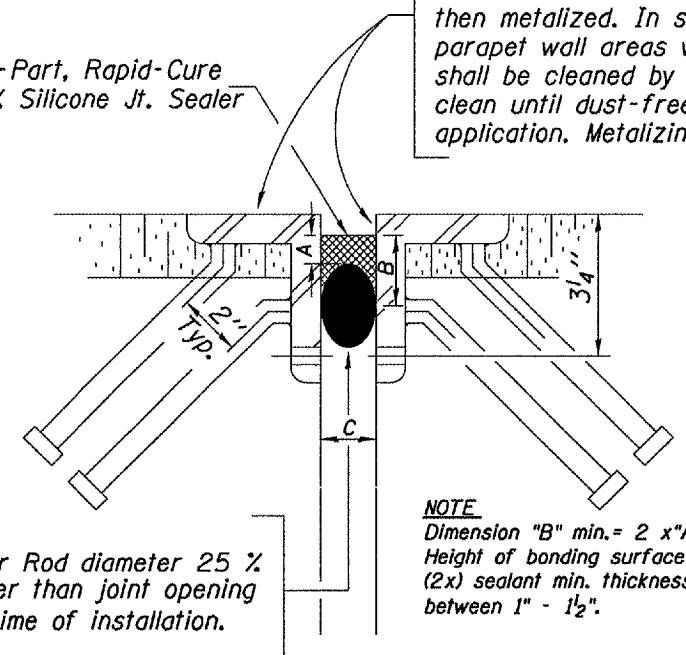
DRAWN BY CEJ  
CHECKED BY

PLOT DATE  
FILE NAME  
PLOT SCALE  
REFERENCE

F.A.I. RTE.	SECTION	COUNTY	TOTAL SHEETS	SHEET NO.
155		TAZEWELL	27	26
STA. 744+80.17 TO STA. 746+58.00				
FED. ROAD DIST. NO. 4 ILLINOIS FED. AID PROJECT				
• 04 Joint Repair 2006				

All exposed and accessible steel surfaces shall be blasted to near white condition, then metalized. In sidewalk, median, and parapet wall areas w/o steel, the concrete shall be cleaned by blasting and blowing clean until dust-free and dry prior to sealant application. Metalizing of concrete is not required.

Two-Part, Rapid-Cure 100% Silicone Jt. Sealer

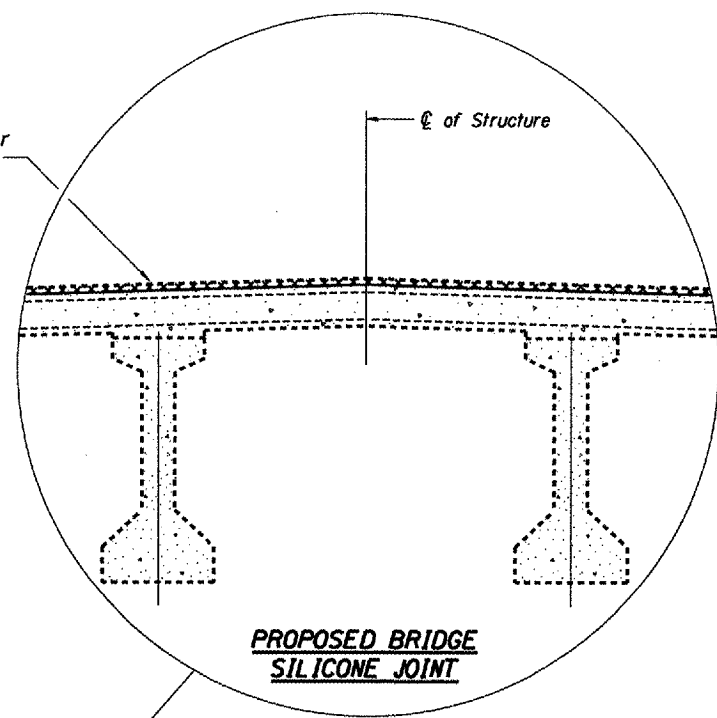


Backer Rod diameter 25 % greater than joint opening at time of installation.

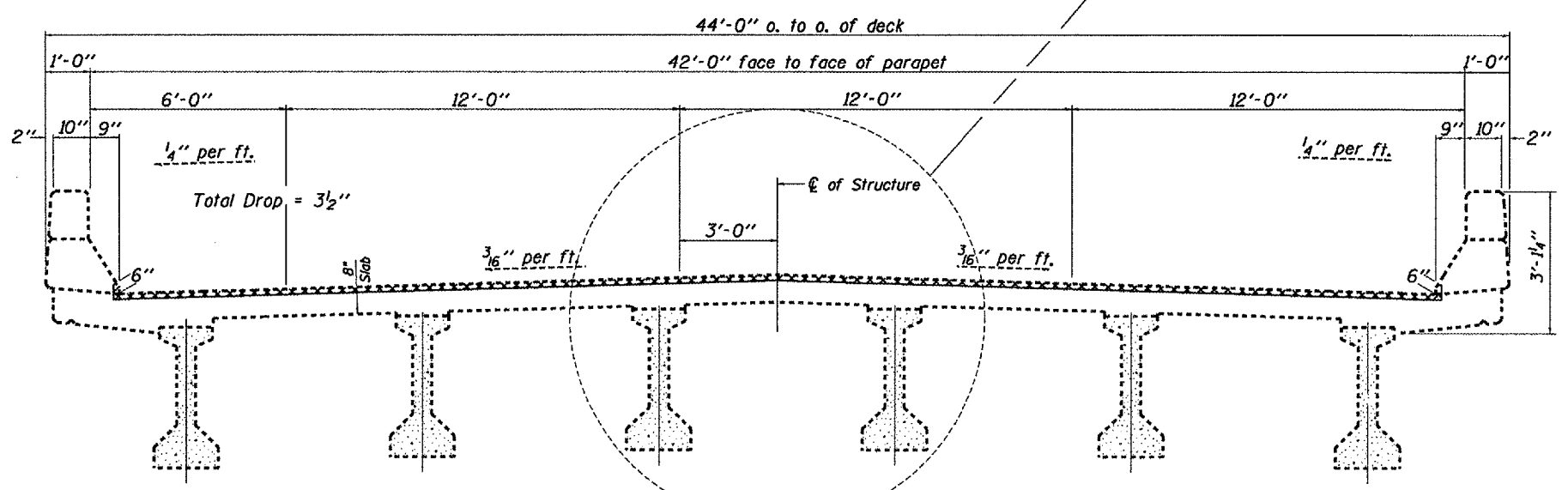
**NOTE**  
Dimension "B" min. = 2 x "A" (where "A" = 3/8" to 5/8"). Height of bonding surface should be approximately (2x) sealant min. thickness. Dimension "C" varies between 1" - 1 1/2".

**PROPOSED BRIDGE JOINT SEALER DETAIL**

Silicone Jt. Sealer and Backer Rod (continuous)



**PROPOSED BRIDGE SILICONE JOINT**



**NEAR PIER**

**NEAR MIDSPAN**

**CROSS SECTION**  
(Looking S.B. in the direction of traffic)

**BILL OF MATERIAL**

ITEM	UNIT	QUANTITY
BLAST CLEANING BRIDGE JOINT STEEL	FOOT	85
BLAST CLEANING PPC BEAM ENDS	FOOT	48
THERMAL SPRAYING (METALIZING) BRIDGE JOINT STEEL	FOOT	82
SILICONE JOINT SEALER	FOOT	85
THERMAL SPRAYING (METALIZING) PPC BEAM ENDS	SQ.FT.	279

PLT DATE \* DATE \*  
PLT SCALE \* SCALES \*  
REFERENCE \* REF \*

REVISIONS	
NAME	DATE

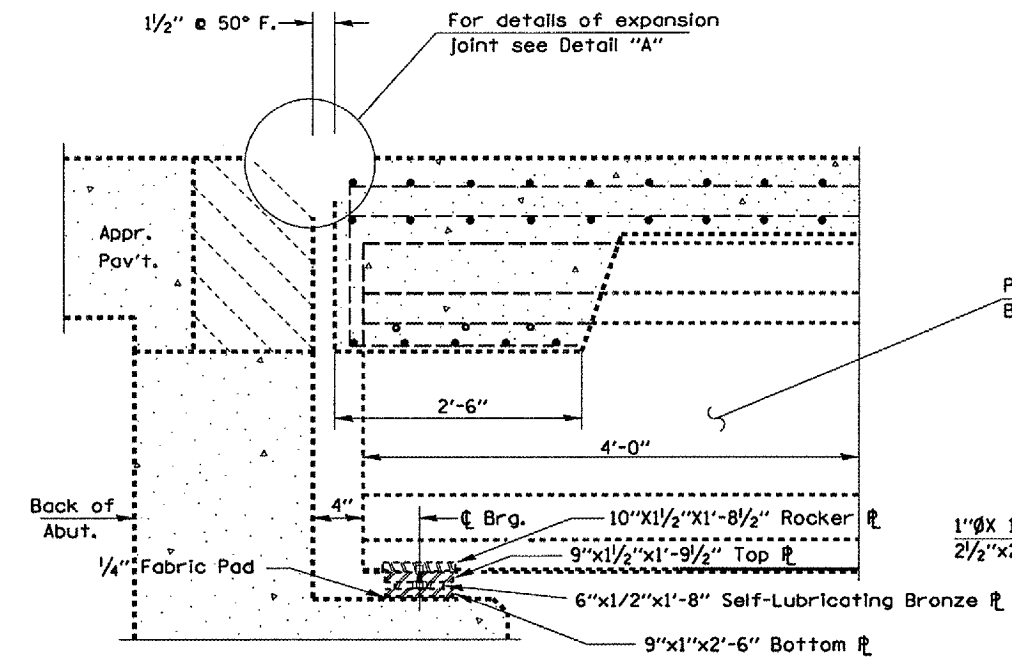
ILLINOIS DEPARTMENT OF TRANSPORTATION

**DECK AND JOINT DETAILS**

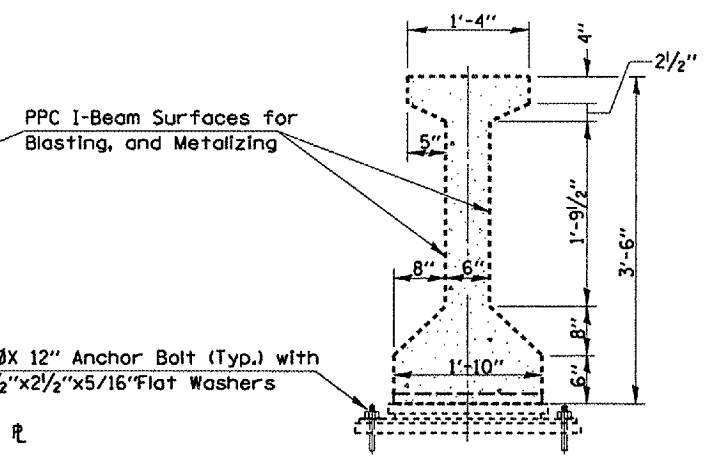
SCALE: VERT.      DRAWN BY CEJ  
 HORIZ.              CHECKED BY  
 DATE 07-21-2005

SN 090-0093  
I-155 SB over  
Indian Crk.

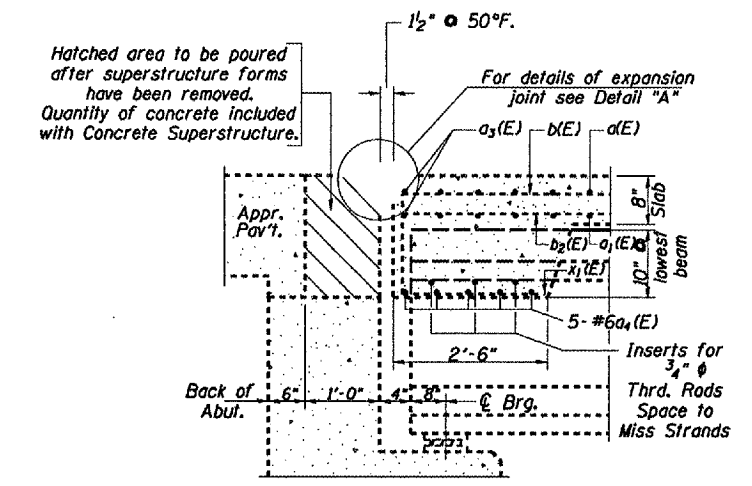
F.A.I. RTE.	SECTION	COUNTY	TOTAL SHEETS	SHEET NO.
155		TAZEWELL	27	27
STA. 744+80.17 TO STA. 746+58.00				
FED. ROAD DIST. NO. 4 ILLINOIS FED. AID PROJECT				
• D4 Joint Repair 2006				



**ABUTMENT/I-BEAM END SECTION**  
(North Abutment)

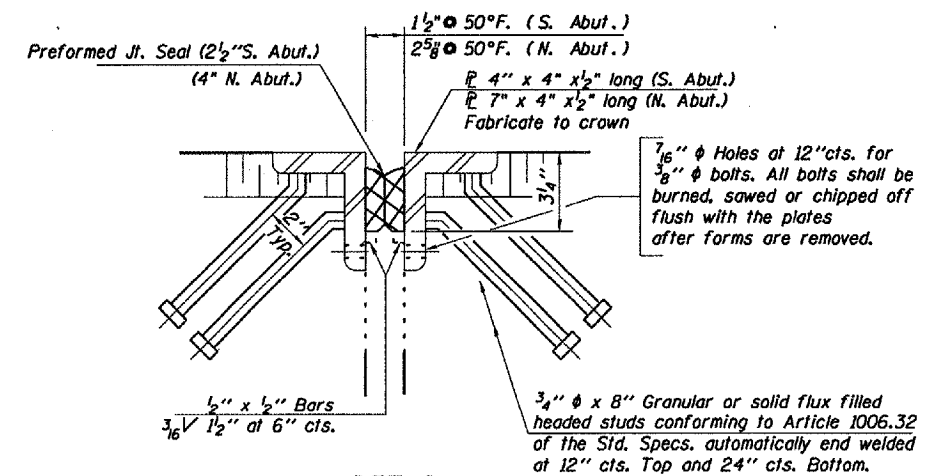


**PPC I-BEAM CROSS-SECTION**  
(6 I-Beams/12 Beam Ends)

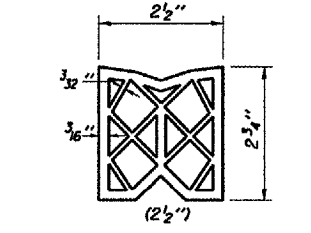


**SECTION THRU ABUTMENT**

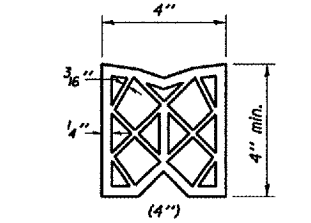
Note  
All horizontal dimensions are at right angles to beam ends.



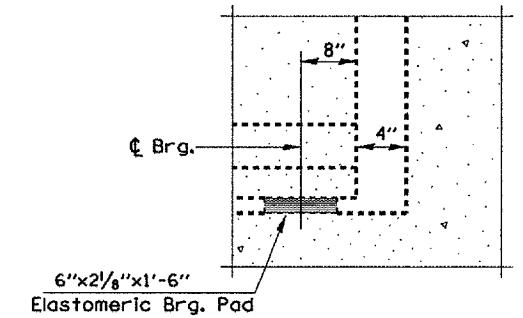
**DETAIL A**



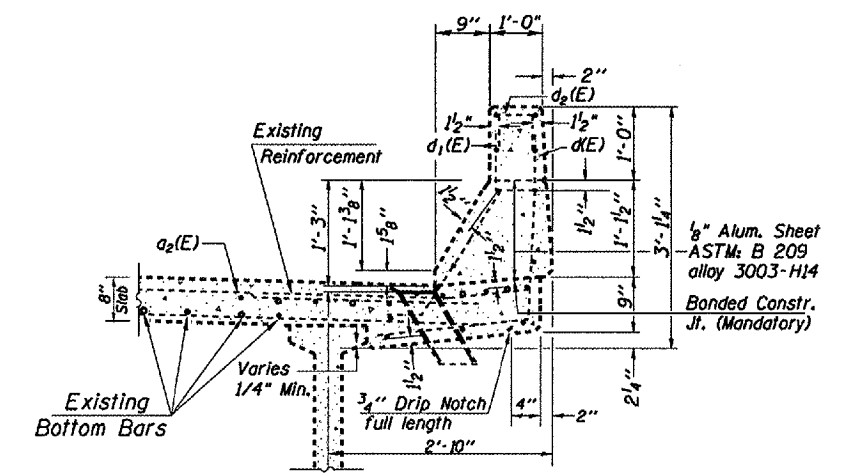
**EXISTING PREFORMED JOINT SEAL**  
(S. Abut. only)



**EXISTING PREFORMED JOINT SEAL**  
(N. Abut. only)



**SOUTH ABUTMENT SECTION**



**SECTION THRU PARAPET**

Note:  
All horizontal dimensions are at right angles to beam ends. Beam length for metallizing shall be measured 4 feet from end and cover all visible side surfaces. Surface area of I-Beam is 5.8 sq.ft. per lineal beam foot.  
All bearings and plates shall have pack rust sand blasted clean prior to being metallized as beam ends are processed. Cost to be included in "THERMAL SPRAYING (METALIZING) PPC BEAM ENDS".

PLOT DATE • DATES  
FILE NAME • FILES  
REFERENCE • SHEET

REVISIONS	DATE

ILLINOIS DEPARTMENT OF TRANSPORTATION

**SUPERSTRUCTURE DETAILS**

SCALE: VERT. DATE 07-22-2005  
HORIZ. DATE 07-22-2005

DRAWN BY CEJ  
CHECKED BY

SN 090-0093  
I-155 SB over  
Indian Crk.