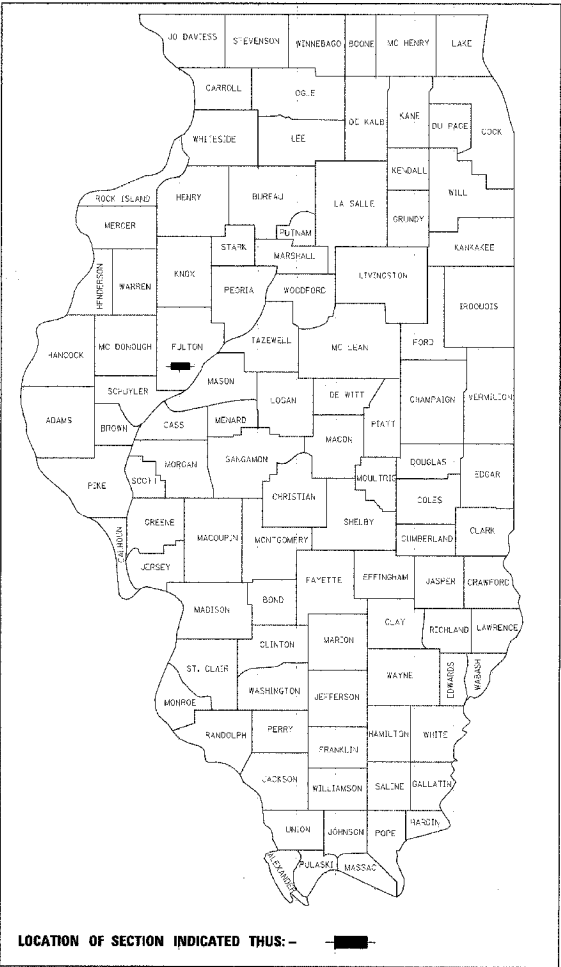


| FAP RTE.              | SECTION | COUNTY   | TOTAL SHEETS     | SHEET NO. |
|-----------------------|---------|----------|------------------|-----------|
| 685                   | (39BR)  | FULTON   | 22               | 1         |
| FED. ROAD DIST. NO. 4 |         | ILLINOIS | FED. AID PROJECT |           |

CONTRACT NO. 68497  
 CATALOG NO. 033095-00D  
 D-94-079-05



STATE OF ILLINOIS  
 DEPARTMENT OF TRANSPORTATION  
 DIVISION OF HIGHWAYS  
**PROPOSED  
 HIGHWAY PLANS**

FAP ROUTE 685 (IL RTE 9)  
 SECTION (39BR)I  
 PROJECT NO. BHF-0685(022)  
 FULTON COUNTY  
 DECK BEAM REPLACEMENT  
 C-94-105-05

INDEX OF SHEETS

- 1 COVER SHEET
- 2 GENERAL NOTES
- 3 SUMMARY OF QUANTITIES
- 4 TYPICAL SECTIONS
- 5 GENERAL SITE PLAN
- 6 RESURFACING DETAIL (BRIDGE APPROACH TAPERBUTT JOINT)
- 7-8 STAGING PLANS
- 9 WIDE LOAD SIGNING
- 10-22 BRIDGE PLANS

STANDARDS

- 420401-05
- 630001-06
- 630301-03
- 631032-02
- 635006-02
- 635011-01
- 701306-01
- 701321-08
- 702001-06
- 704001-02
- 780001-01
- 781001-02
- 615001-02

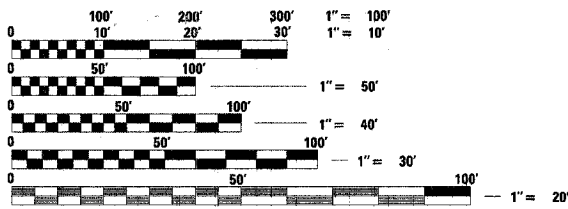
COMMITMENTS

NONE

PLAN = 1" = 30'  
 PROFILE HORIZ. = 1" = 30'  
 PROFILE VERT. = 1" = 5'  
 CROSS SECTIONS = 1" = 10' HORIZ.  
 1" = 5' VERT.

DESCRIPTION OF WORK

THE PROPOSED IMPROVEMENTS CONSIST OF REMOVAL OF THE EXISTING BRIDGE SUPERSTRUCTURE AND REPLACING WITH PRECAST, PRESTRESSED CONCRETE DECK BEAMS, CONCRETE WEARING SURFACE AND OTHER APPURTENANT ITEMS OF WORK. THE CONTRACTOR SHALL BE RESPONSIBLE FOR FURNISHING ALL LABOR, EQUIPMENT AND MATERIALS NECESSARY TO SATISFACTORILY CONSTRUCT THE PROJECT IN ACCORDANCE WITH THE PLANS, SPECIFICATIONS AND PROVISIONS STATED HEREIN.



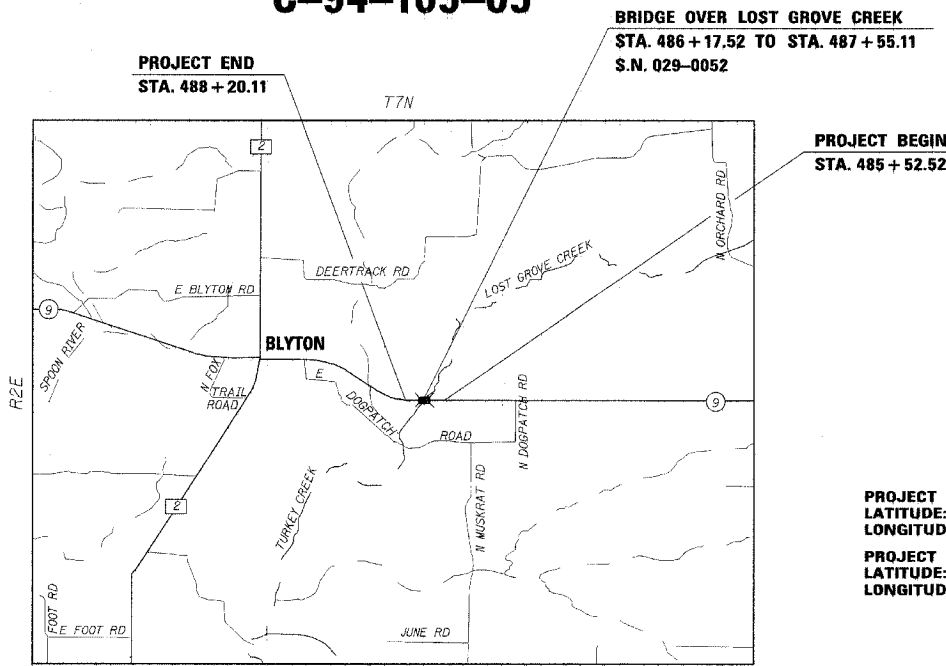
FULL SIZE PLANS HAVE BEEN PREPARED USING STANDARD ENGINEERING SCALES. REDUCED SIZED PLANS WILL NOT CONFORM TO STANDARD SCALES, IN MAKING MEASUREMENTS ON REDUCED PLANS, THE ABOVE SCALES MAY BE USED.

J.U.L.I.E.  
 JOINT UTILITY LOCATION INFORMATION FOR EXCAVATION  
 1-800-892-0123

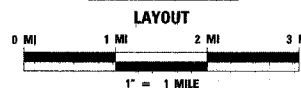
CONTRACT NO. 68497

LENGTH OF PROJECT  
 GROSS LENGTH: 286 FT = 0.05 MILES  
 NET LENGTH: 268 FT = 0.05 MILES

QA/QC BITUMINOUS SUPERPAVE PROJECT

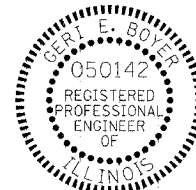


LOCATION MAP



2004 ADT = 1500  
 2024 ADT = 1830

PROJECT BEGIN (APPROX.)  
 LATITUDE: 40° 33' 38" N  
 LONGITUDE: 91° 15' 27" W  
 PROJECT END (APPROX.)  
 LATITUDE: 40° 33' 38" N  
 LONGITUDE: 90° 15' 27" W



STATE OF ILLINOIS  
 DEPARTMENT OF TRANSPORTATION  
 DIVISION OF HIGHWAYS

SUBMITTED FEB 10 20 06  
 DEPUTY DIRECTOR OF HIGHWAYS, REGION 3 ENGINEER

PASSED March 24, 20 06  
 ENGINEER OF DESIGN AND ENVIRONMENT

APPROVED March 24, 20 06  
 DIRECTOR, DIVISION OF HIGHWAYS

PRINTED BY THE AUTHORITY  
 OF THE STATE OF ILLINOIS

Gert E. Boyer 2/9/2006  
 GERT E. BOYER, P.E.  
 LICENSE NO. 062-050142  
 EXPIRES 11-30-2007

PREPARED BY:  
 THOUVENOT, WADE & MOERCHEN, INC.

PROJECT ENGINEER: JAMES MILLER  
 SQUAD CONTACT: (309) 671-3451