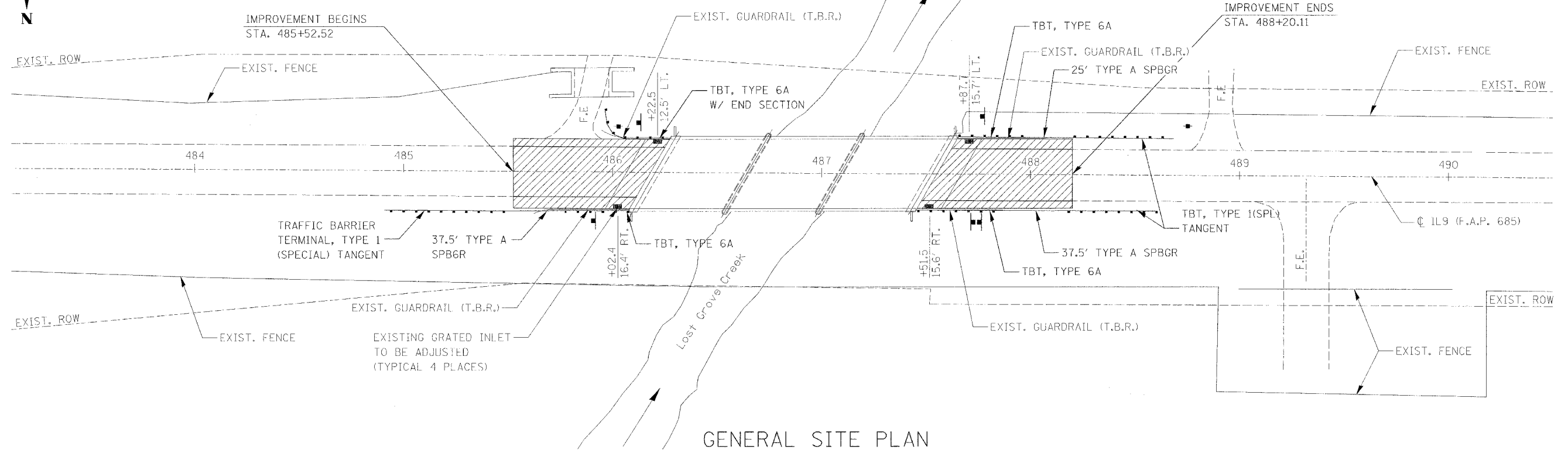


FAP ROUTE	SECTION	COUNTY	TOTAL SHEETS	SHEET NO.
685	(39BR)	FULTON	22	5
STA.	TO STA.			
EXISTING CONDITIONS:				
CONTRACT NO. 68497				

NOTE:
CONTRACTOR SHALL MAINTAIN ACCESS TO FIELD ENTRANCES AT ALL TIMES DURING CONSTRUCTION.



GENERAL SITE PLAN

STATION TO STATION	SPBGR TYPE A (FOOT)	TRAF. BARRIER TERM. TYPE 1 (SPECIAL) (TANGENT) (EACH)	TRAF. BARRIER TERM., TYPE 6A (EACH)	SPBGR REMOVAL (FOOT)	GUARDRAIL MARKERS T-A (EACH)	BARRIER WALL MARKER T-A (EACH)	TERM. MARKER DIRECT APPLIED (EACH)
485+63.00 RT. TO 486+08.00 RT.				45			
486+02.00 LT. TO 486+27.00 LT.				25			
487+46.00 RT. TO 487+91.00 RT.				45			
487+63.00 LT. TO 488+10.00 LT.				45			
484+90.00 RT. TO 486+08.00 RT.	37.5	1	1		1		1
486+02.00 LT. TO 486+27.00 LT.			1		1		
487+46.00 RT. TO 488+65.00 RT.	37.5	1	1		1		1
487+65.00 RT. TO 488+72.00 RT.	25	1	1		1		1
486+08.00 RT. TO 487+46.00 RT.						2	
486+27.00 LT. TO 487+65.00 LT.						2	
TOTAL:	100	3	4	160	4	4	3

STATION TO STATION	BIT MATERIALS PRIME COAT (GALLON)	AGGREGATE PRIME COAT (TON)	BITUMINOUS SURFACE REMOVAL BUTT JOINT (SQ YD)	AGGREGATE SHOULDERS TYPE B (TON)	BIT. CONC. SURFACE COURSE SUPERPAVE MIX D (TON)	BINDER COURSE SUPERPAVE N50 (TON)
485+52.52 TO 486+17.52	74	0.5	80	1	18.5	4
487+55.11 TO 488+20.11	74	0.5	80	1	18.5	4
TOTAL:	148	1	160	2	37	8

STATION TO STATION	EARTH EXCAVATION (CU. YD.)	EARTH EXCAVATION ADJUSTED FOR SHRINKAGE BARRIER (CU. YD.)	EMBANKMENT (CU. YD.)	EARTHWORK BALANCE WASTE (+), SHORTAGE (-) (CU. YD.)
484+90.00 RT. TO 486+08.00 RT.	0	0	25.2	-25.2
487+46.00 RT. TO 488+65.00 RT.	0	0	25.2	-25.2
487+65.00 LT. TO 488+72.00 LT.	0	0	25.2	-25.2
TOTAL:	0	0	75.6	-75.6

STATION TO STATION	SHORT TERM PAVEMENT MARKINGS (SQ FT)	TEMPORARY PAVEMENT MARKING LINE 4" (FT)	WORK ZONE PVMT. MARKING REMOVAL (SQ FT)	EPOXY PVMT. MARKING LINE 4" (FOOT)	PAVMENT MARKING REMOVAL (SQ FT)
482+45.00 C TO 491+25.00 C			59	1760	
482+45.00 RT. TO 491+25.00 RT.	176	1760	586.5	880	
482+45.00 LT. TO 491+25.00 LT.		1760	586.5	880	
482+45.00 RT. TO 491+25.00 RT. (STAGE 1 & 2)		1760	586.5		586.5
482+45.00 LT. TO 491+25.00 LT. (STAGE 1 & 2)		1760	586.5		586.5
SUB TOTAL:					
TOTAL:	176	7040	2405	3520	1173

NAME	DATE

ILLINOIS DEPARTMENT OF TRANSPORTATION
GENERAL SITE PLAN
FAP ROUTE 685
SECTION (39BR)
FULTON COUNTY
SCALE: NONE
DATE: 2/10/2006
DRAWN BY: KBF
CHECKED BY: BWP

\$FILES\$
 \$DATE\$
 \$TIME\$