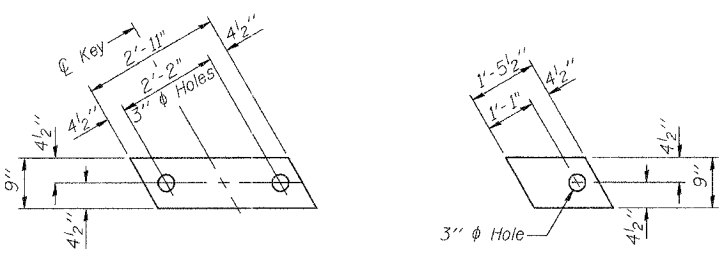


STATE OF ILLINOIS  
DEPARTMENT OF TRANSPORTATION

ROUTE NO.	SECTION	COUNTY	TOTAL SHEETS	SHEET NO.
F.A.P. 685	(39BR)	FULTON	22	13
FED. ROAD DIST. NO. 7		ILLINOIS	FED. AID PROJECT	

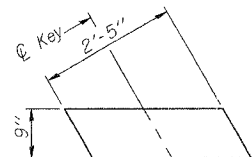
Contract # 68497



FABRIC BEARING PAD  
(Interior)

FABRIC BEARING PAD  
(Exterior)

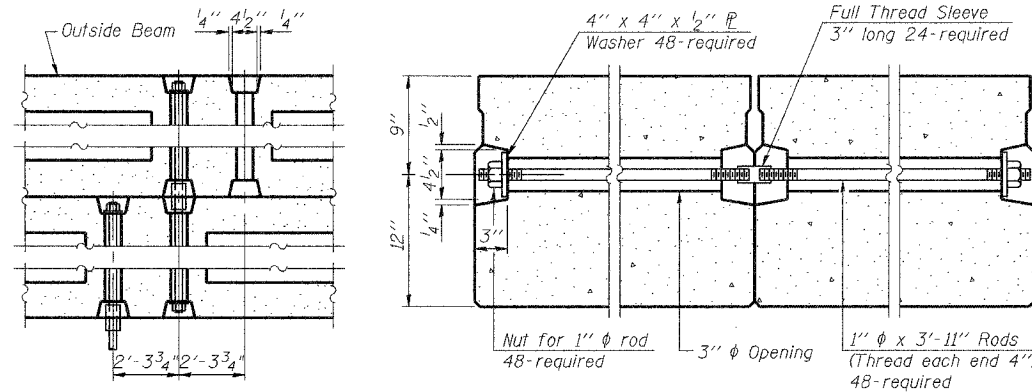
FIXED



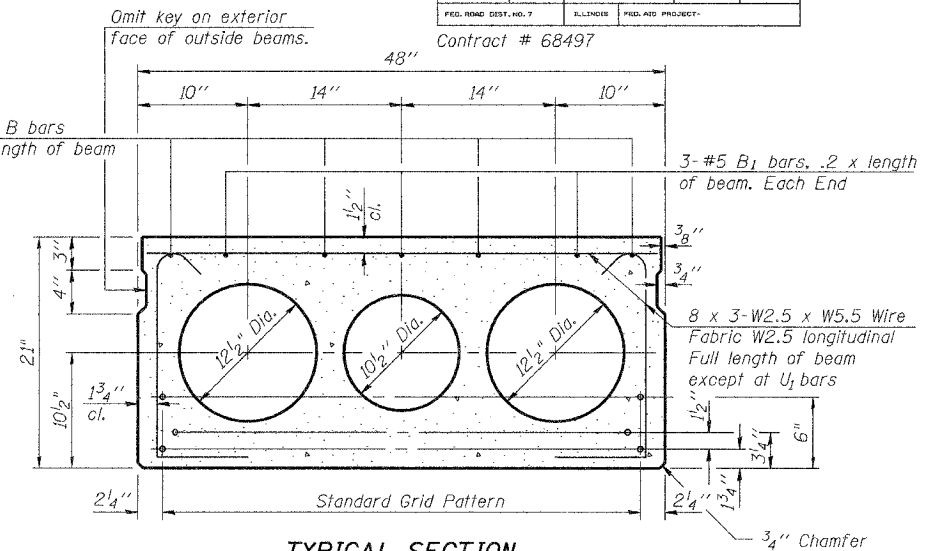
FABRIC BEARING PAD  
(Interior)

FABRIC BEARING PAD  
(Exterior)

EXPANSION



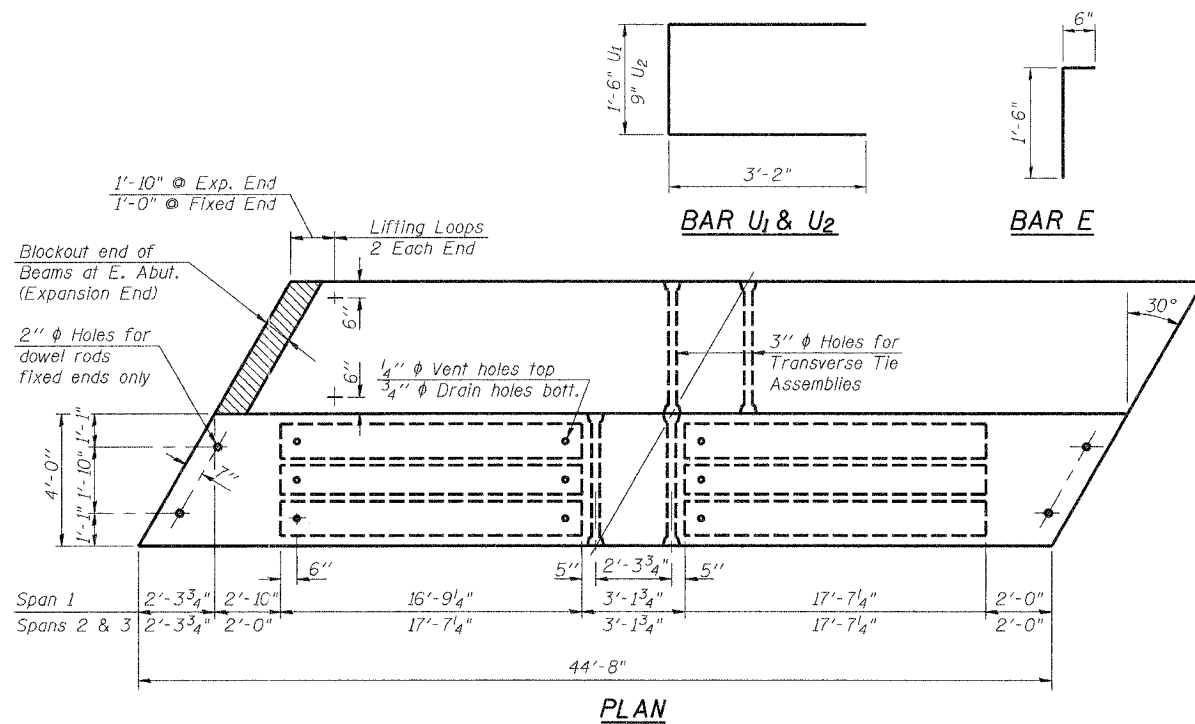
TYPICAL TRANSVERSE TIE ASSEMBLY



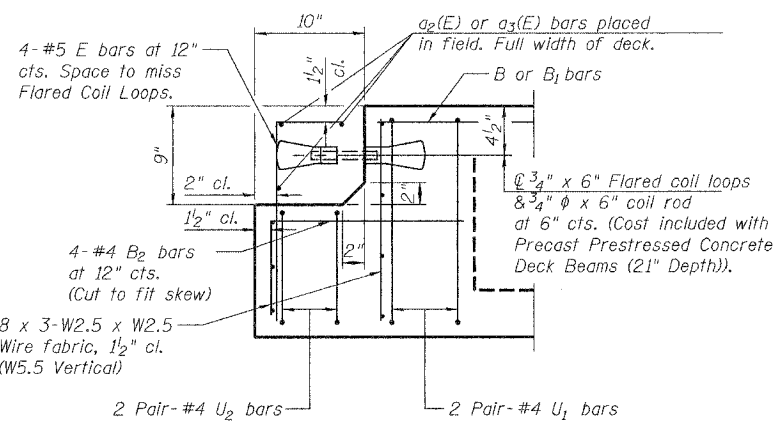
TYPICAL SECTION

1/2"  $\phi$  Strands, Each Strand Stressed to 30,900 Lbs.  
8-Strands 1 3/4" up, 7-Strands 3/4" up, 2-Strands 6" up

Note:  
Place strands symmetrically about  $\phi$  of beam.

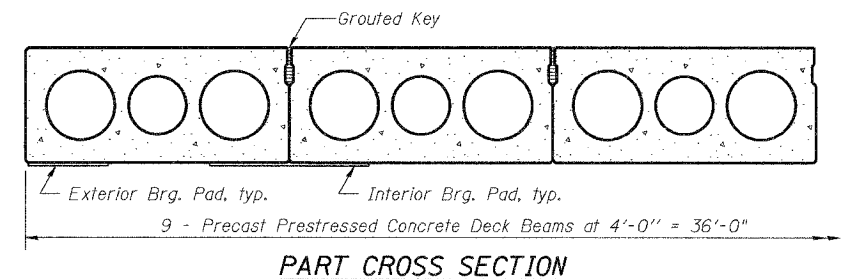


PLAN

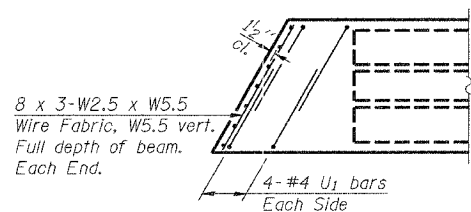


END OF BEAM (EXP. END)

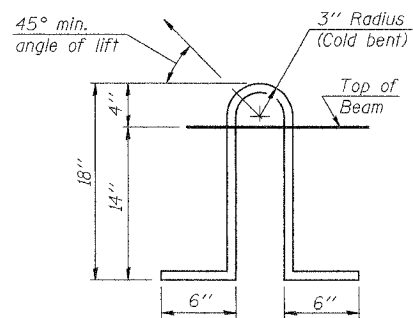
(Dimensions are at Rt. L's)



PART CROSS SECTION



END PLAN  
(Fixed End)



LIFTING LOOP DETAIL

NOTES

Prestressing steel shall be uncoated high strength, low relaxation 7-wire strand, Grade 270. The nominal diameter shall be 1/2" and the nominal cross-sectional area shall be 0.153 sq. in. Lifting loops shall be 2-1/2"  $\phi$  270 ksi strands, as shown. The 1"  $\phi$  rods in the transverse tie assembly shall be tightened to a snug fit and the threads set. Pockets that receive transverse tie bar on outside shall be filled with grout after transverse tie assembly is in place. The bearing seat surfaces shall be adjusted by shimming to assure firm and even bearing. Two 1/8" fabric adjusting shims of the dimensions of the Exterior Bearing Pad shall be provided for each bearing. Keyway surfaces shall be cleaned to remove form oil or other bond breaking material prior to shipment of the beams. Cleaning shall be done by sandblasting the keyway areas between top of the beam and the bottom edge of the key. Corrosion Inhibitor, as covered in the Special Provisions, shall be used in the concrete for precast prestressed concrete deck beams. Required Release Strength, f'ci, shall be 4,000 p.s.i.

BILL OF MATERIAL

Precast Prestressed Concrete Deck Beams (21" Depth)	Sq. Ft.	4824
---	---------	------

**SUPERSTRUCTURE**  
**ILLINOIS ROUTE 9 OVER**  
**LOST GROVE CREEK**  
**F.A.P. ROUTE 685 SECTION (39BR)**  
**FULTON COUNTY**  
**SN 029-0052**

DESIGNED	BWP
CHECKED	KPC
DRAWN	BWP
CHECKED	KPC