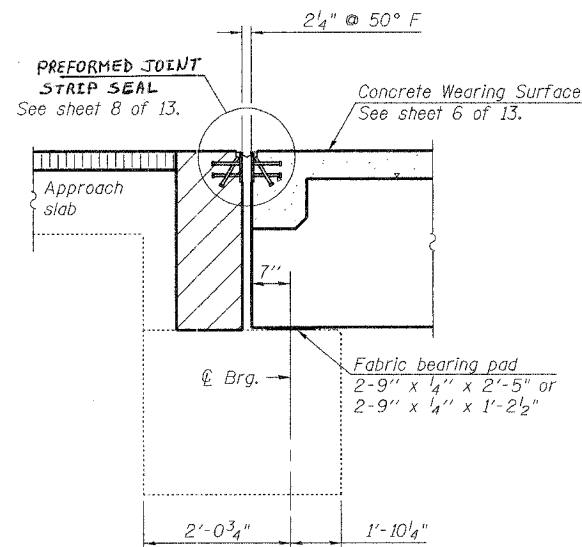


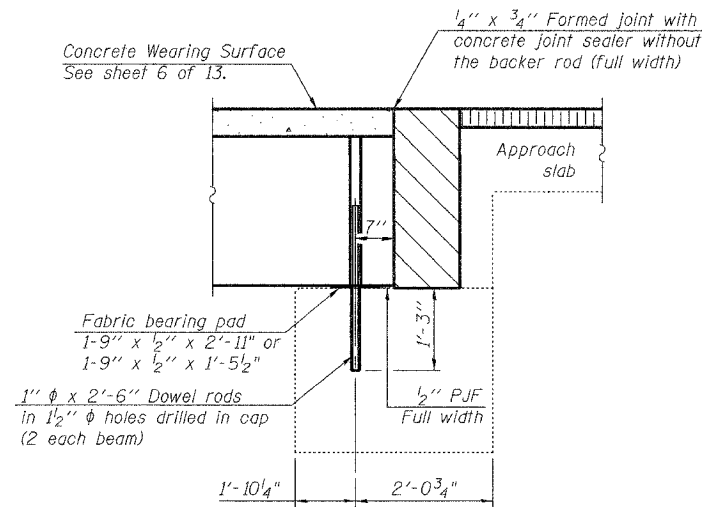
STATE OF ILLINOIS  
DEPARTMENT OF TRANSPORTATION

ROUTE NO.	SECTION	COUNTY	SHEETS	SHEET NO.	SHEET NO. 5
F.A.P. 685	(39BR)I	FULTON	22	14	13 SHEETS
FED. ROAD DIST. NO. 7	ILLINOIS	FED. AID PROJECT			

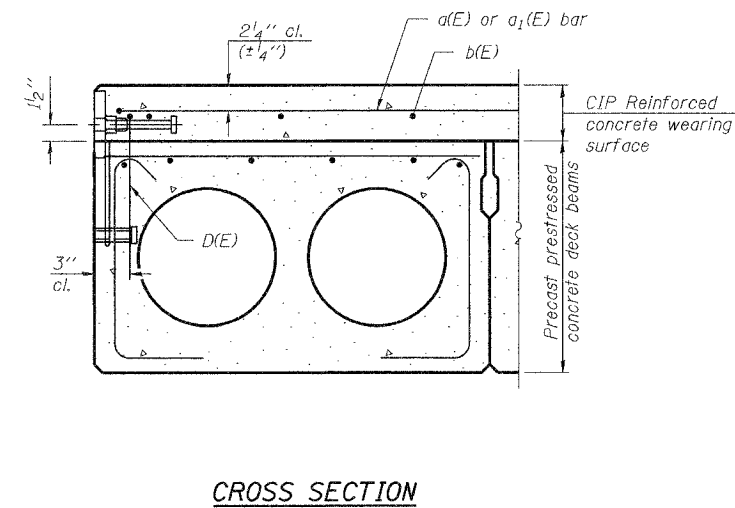
Contract # 68497



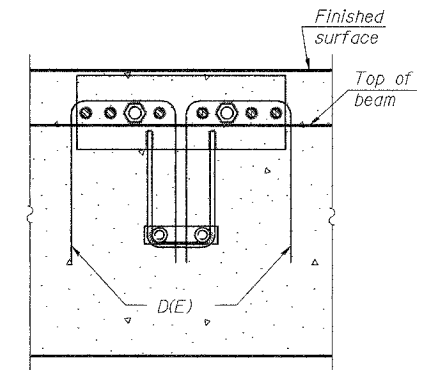
SECTION THRU EAST ABUTMENT



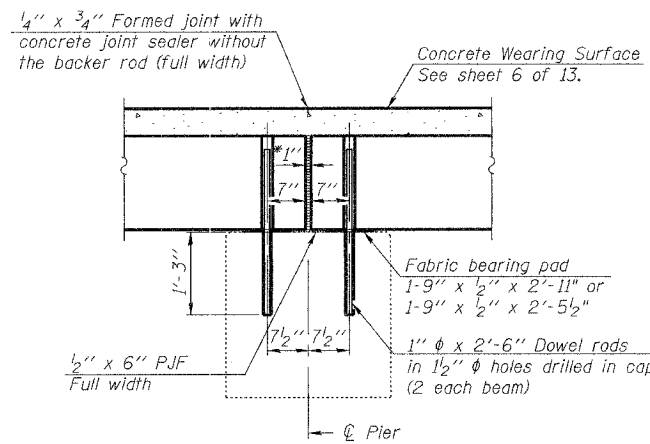
SECTION THRU WEST ABUTMENT



CROSS SECTION



SECTION A-A

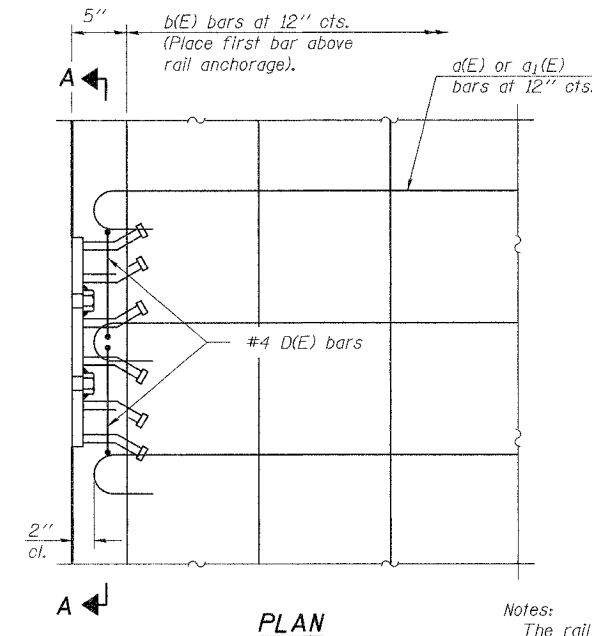


SECTION THRU PIERS

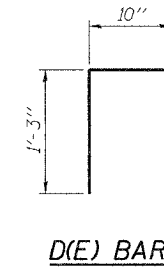
\* 1" Jt. shall be filled with non-shrink grout. 1" dimension may vary to accommodate tolerance in beam lengths.

Notes:

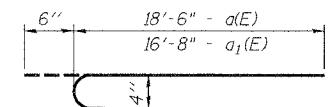
- Ends of beams shall be aligned at the expansion joint. Any lineal variation in the beam lengths shall be placed at the fixed joint (Pier 1).
- After beams have been erected, temporary retainers shall be installed, holes shall be drilled into substructure and anchor dowels placed. Dowel holes shall be filled with non-shrink grout to top of beam and allowed to cure min. 24 hrs. prior to grouting the shear keys.
- Concrete wearing surface (including blockout) to be poured after grouting the shear keys.
- Hatched area to be poured after concrete wearing surface (including blockout) is in place.
- Dowel rods drilled in cap are included in the cost of Precast Prestressed Concrete Deck Beams (21" Depth).
- All horizontal dimensions are at right angles to beam ends. See sheet 4 of 13 for bearing pad details.



PLAN



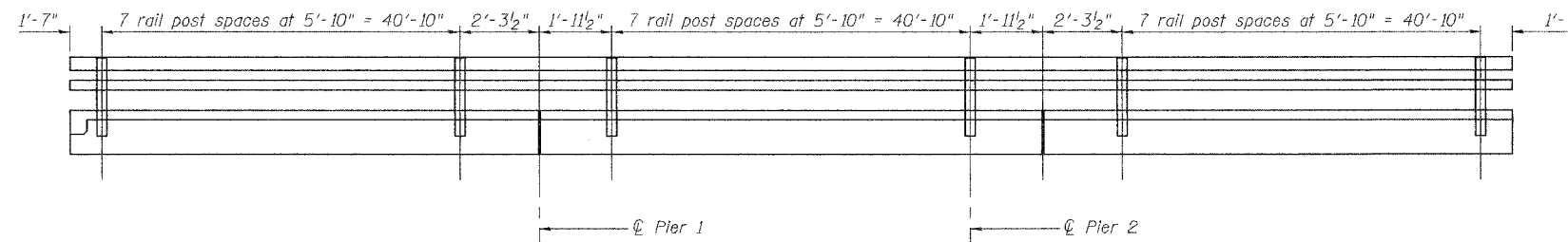
D(E) BAR



a(E), a1(E) BAR

Notes:

- The rail anchorage shall be cast with the beam and the wearing surface shall be cast in the field.
- Formwork necessary for the wearing surface may be secured utilizing the bottom rail anchorage inserts and/or additional inserts cast into the beam. Drilling into the beam will not be permitted.



RAIL POST SPACING

DESIGNED	BWP
CHECKED	KPC
DRAWN	BWP
CHECKED	KPC

SUPERSTRUCTURE DETAILS  
ILLINOIS ROUTE 9 OVER  
LOST GROVE CREEK  
F.A.P. ROUTE 685 SECTION (39BR)I  
FULTON COUNTY  
SN 029-0052