

STATE OF ILLINOIS
DEPARTMENT OF TRANSPORTATION

ROUTE NO.	SECTION	COUNTY	TOTAL SHEETS	SHEET	SHEET NO.
F.A.P. 685	(39BR)I	FULTON	22	17	13 SHEETS
FED. ROAD DIST. NO. 7	ILLINOIS	FED. AID PROJECT-			

Contract # 68497

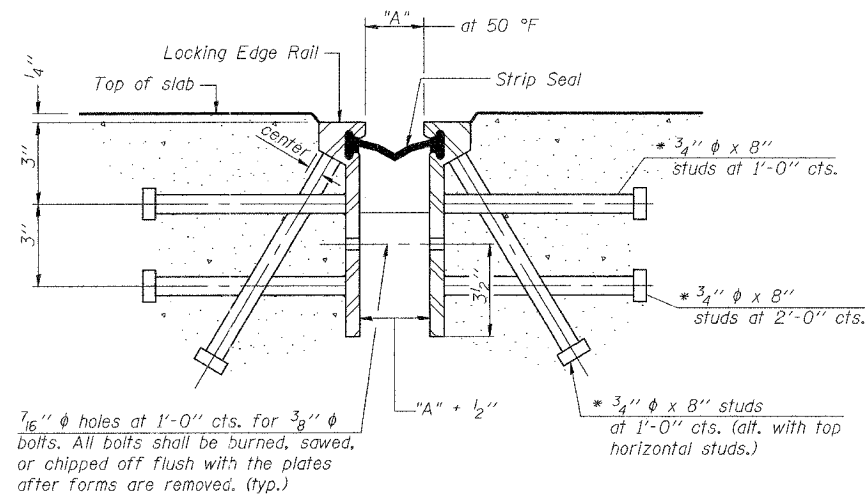
GENERAL NOTES

The strip seal shall be made continuous and shall have a minimum thickness of 1/4". The configuration of the strip seal shall match the configuration of the Locking Edge Rails.

The height and thickness of the Locking Edge Rails shown are minimum dimensions. The actual configuration of the Locking Edge Rails and matching strip seal may vary from manufacturer to manufacturer. Flanged edge rails will not be allowed.

Locking Edge Rails may be spliced at slope discontinuities and stage construction joints.

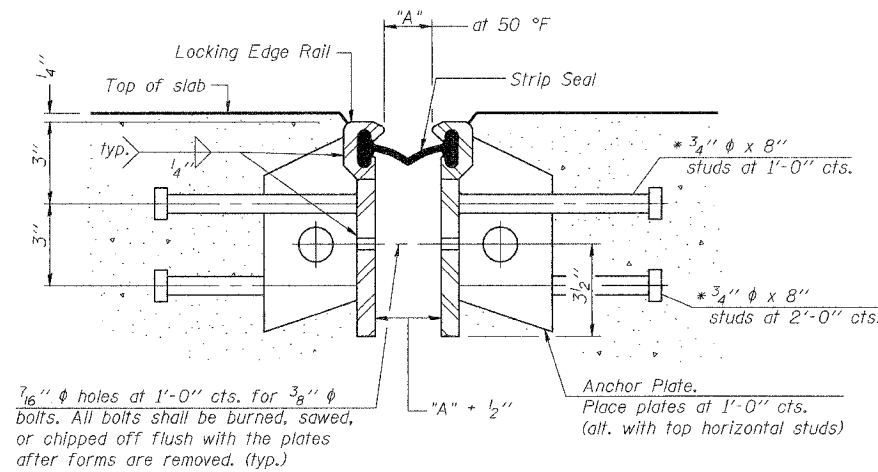
The manufacturer's recommended installation methods shall be followed.



SECTION THRU ROLLED RAIL EXP. JOINT

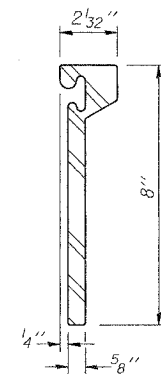
(94 Studs Required-Stage I)
(84 Studs Required-Stage II)

* Granular or solid flux filled headed studs conforming to Article 1006.32 of the Std. Specs., automatically end welded.

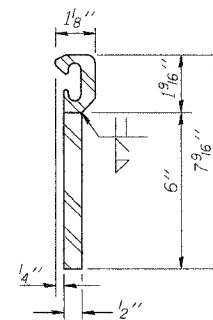


SECTION THRU WELDED RAIL EXP. JOINT

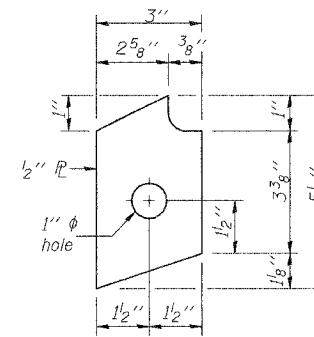
(58 Studs Required-Stage I, 52 Studs Required-Stage II)
(36 Anchor Plates Required-Stage I), (32 Anchor Plates Required-Stage II)



ROLLED (EXTRUDED) RAIL

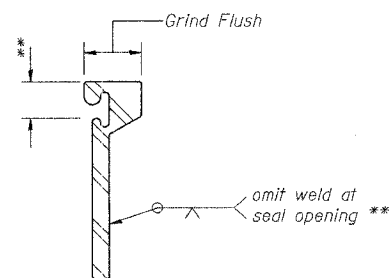


WELDED RAIL



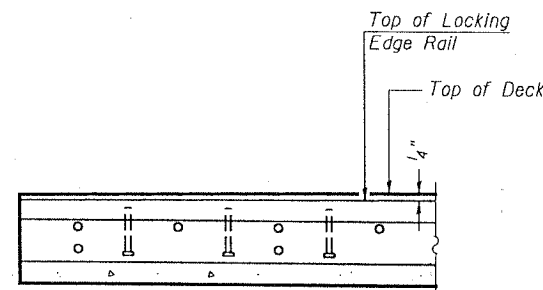
ANCHOR PLATE
(for welded rail)

LOCKING EDGE RAILS



LOCKING EDGE RAIL SPLICE

The inside of the locking edge rail groove shall be free of weld residue.



AT EDGE OF DECK
TYPICAL END TREATMENTS

STRIP SEAL EXPANSION JOINT ASSEMBLY
ILLINOIS ROUTE 9 OVER
LOST GROVE CREEK
F.A.P. ROUTE 685 SECTION (39BR)I
FULTON COUNTY
SN 029-0052

DESIGNED	BWP
CHECKED	KPC
DRAWN	BWP
CHECKED	KPC

EJ-BJS

10-22-04