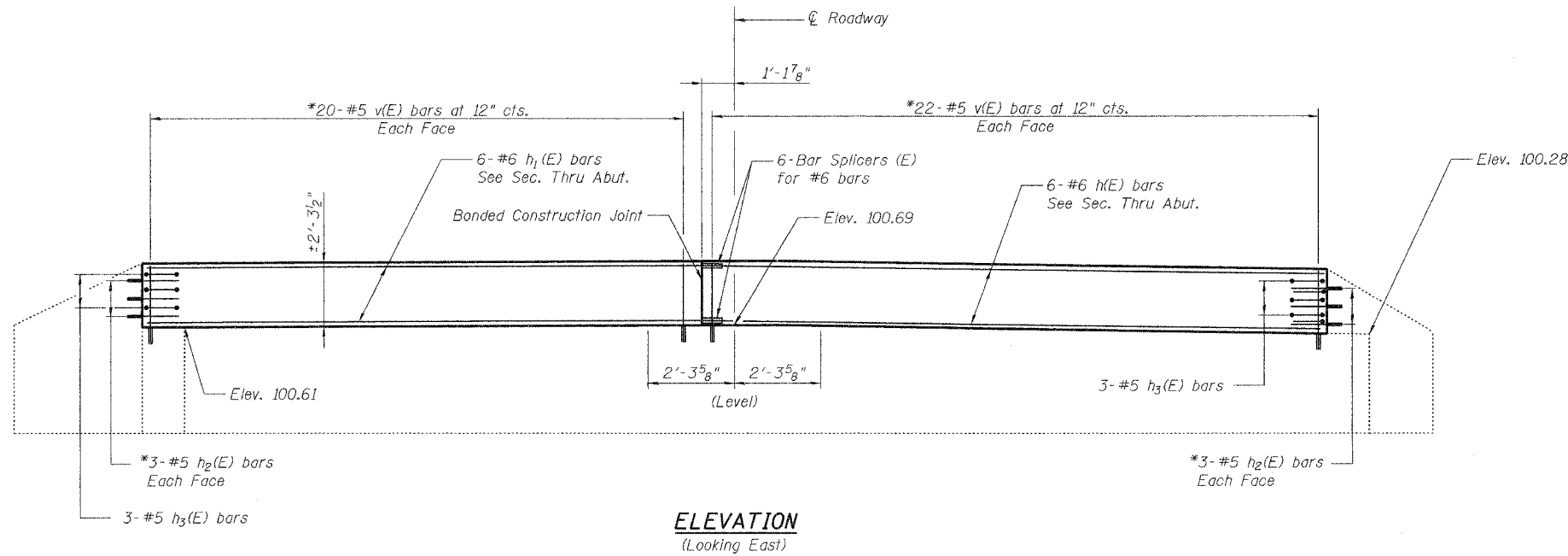


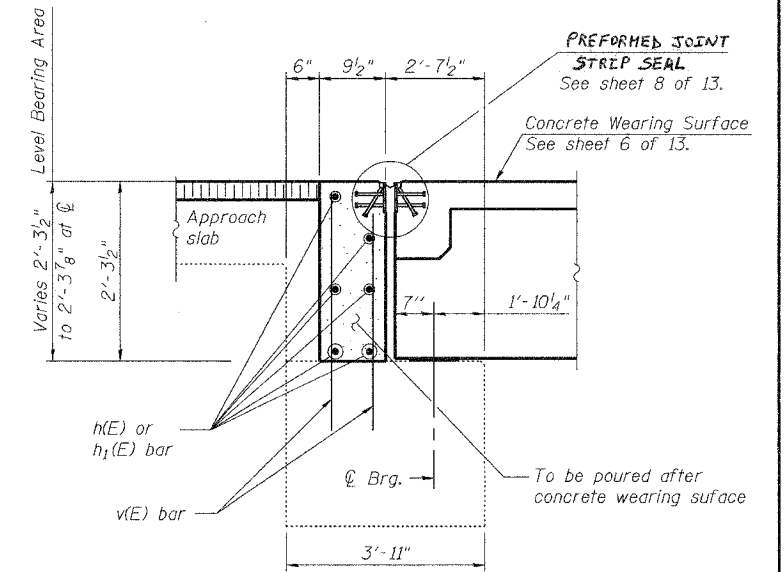
STATE OF ILLINOIS  
DEPARTMENT OF TRANSPORTATION

ROUTE NO.	SECTION	COUNTY	SHEETS	SHEET	SHEET NO.
F.A.P. 685	(39BR)I	FULTON	22	19	10
FED. ROAD DIST. NO. 7		ILLINOIS	FED. AID PROJECT-		

Contract # 68497

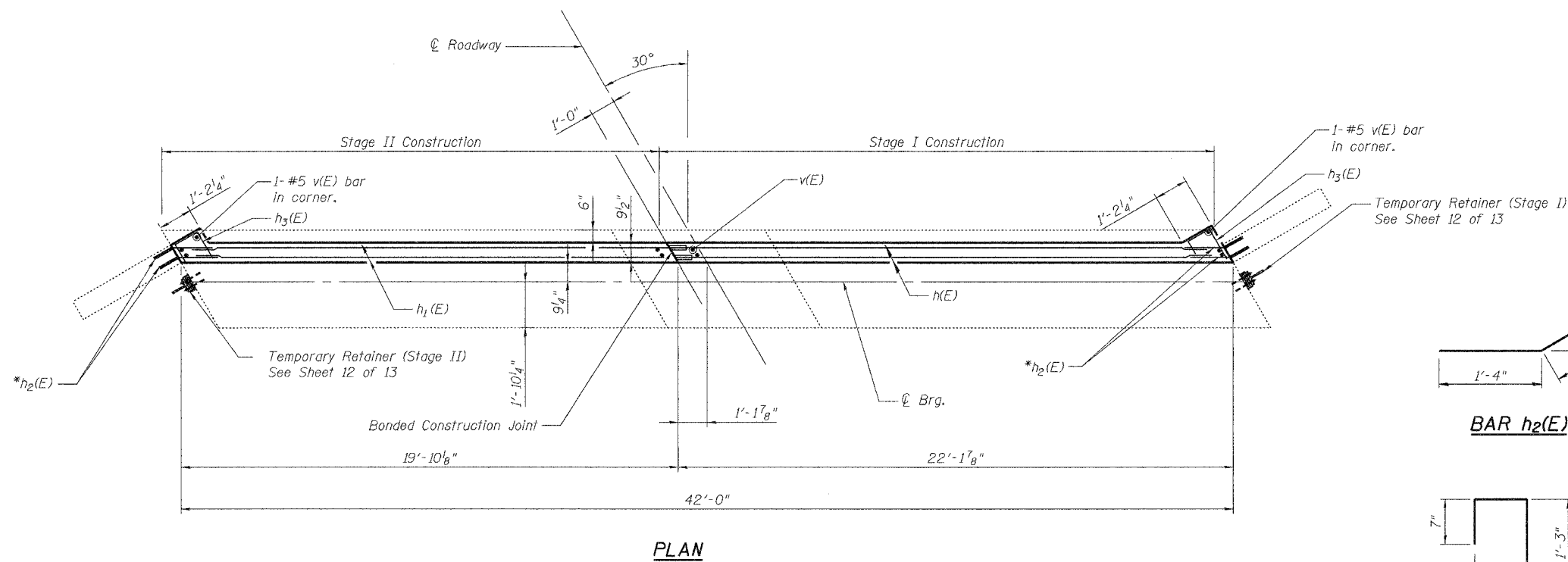


**ELEVATION**  
(Looking East)

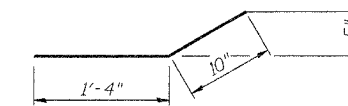


**SECTION THRU EAST ABUTMENT**

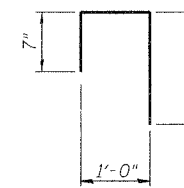
\* Epoxy grout v(E) and h2(E) bars in 9" (Min.) drilled holes according to Section 584 of the Standard Specification



**PLAN**



**BAR h2(E)**



**BAR h3(E)**

**BILL OF MATERIAL**

Bar	No.	Size	Length	Shape
h(E)	6	#6	21'-8"	—
h1(E)	6	#6	19'-6"	—
h2(E)	12	#5	2'-2"	—
h3(E)	6	#5	2'-10"	┌
v(E)	86	#5	2'-11"	—
Concrete Structures			Cu. Yd.	3.0
Reinforcement Bars, Epoxy Coated			Pound	680

**EAST ABUTMENT**  
**ILLINOIS ROUTE 9 OVER**  
**LOST GROVE CREEK**  
**F.A.P. ROUTE 685 SECTION (39BR)I**  
**FULTON COUNTY**  
**SN 029-0052**

DESIGNED	BWP
CHECKED	KPC
DRAWN	BWP
CHECKED	KPC