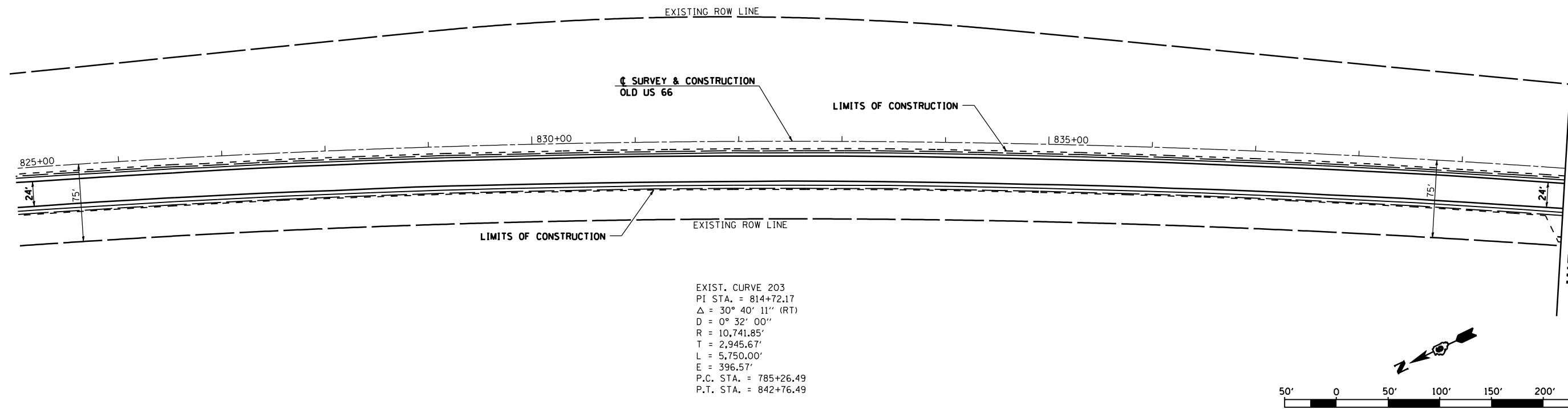


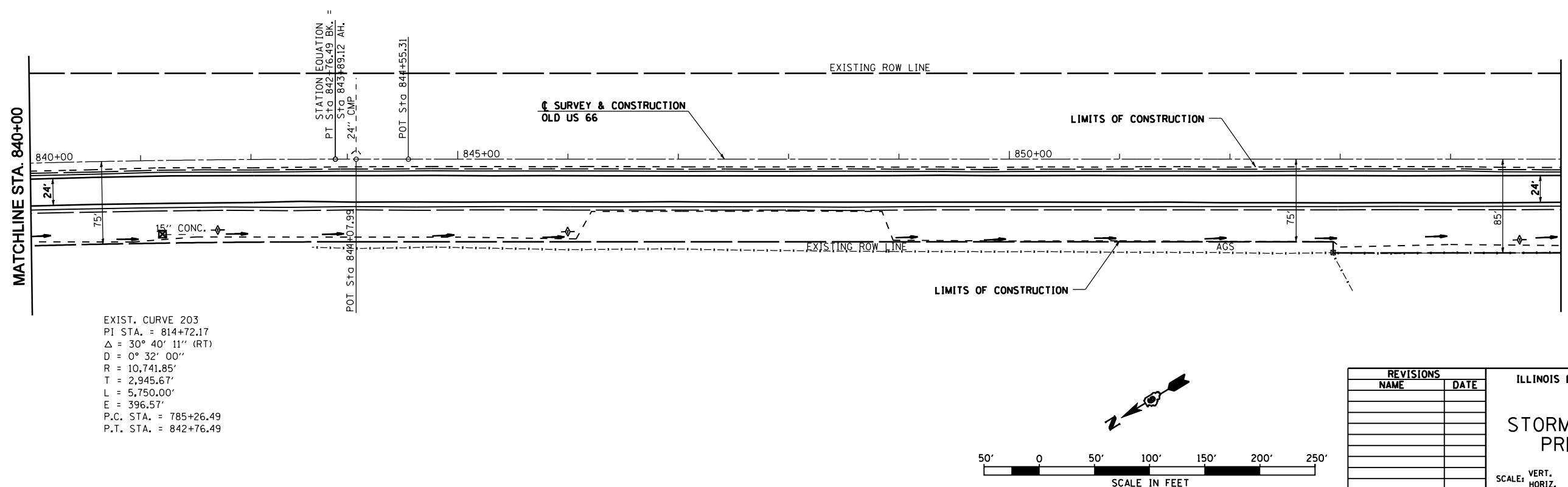
SEC 17, T 8 N, R 5 W, 3RD PM

F.A.S. RTE.	SECTION	COUNTY	TOTAL SHEETS	SHEET NO.
1767	RS,R	.	302	122
STA. 825+00		TO STA. 855+00		
FED. ROAD DIST. NO.	ILLINOIS	FED. AID PROJECT		
• MACOUPIN & MONTGOMERY COUNTIES				
<b>CONTRACT NO. 72526</b>				



EXIST. CURVE 203  
 PI STA. = 814+72.17  
 $\Delta = 30^\circ 40' 11''$  (RT)  
 $D = 0^\circ 32' 00''$   
 $R = 10,741.85'$   
 $T = 2,945.67'$   
 $L = 5,750.00'$   
 $E = 396.57'$   
 P.C. STA. = 785+26.49  
 P.T. STA. = 842+76.49

SEC 17, T 8 N, R 5 W, 3RD PM



EXIST. CURVE 203  
 PI STA. = 814+72.17  
 $\Delta = 30^\circ 40' 11''$  (RT)  
 $D = 0^\circ 32' 00''$   
 $R = 10,741.85'$   
 $T = 2,945.67'$   
 $L = 5,750.00'$   
 $E = 396.57'$   
 P.C. STA. = 785+26.49  
 P.T. STA. = 842+76.49

REVISIONS	
NAME	DATE

ILLINOIS DEPARTMENT OF TRANSPORTATION  
**STORMWATER POLLUTION PREVENTION PLAN**  
 SCALE: VERT. HORIZ.  
 DATE 2/8/2006  
 DRAWN BY TJD  
 CHECKED BY AWM