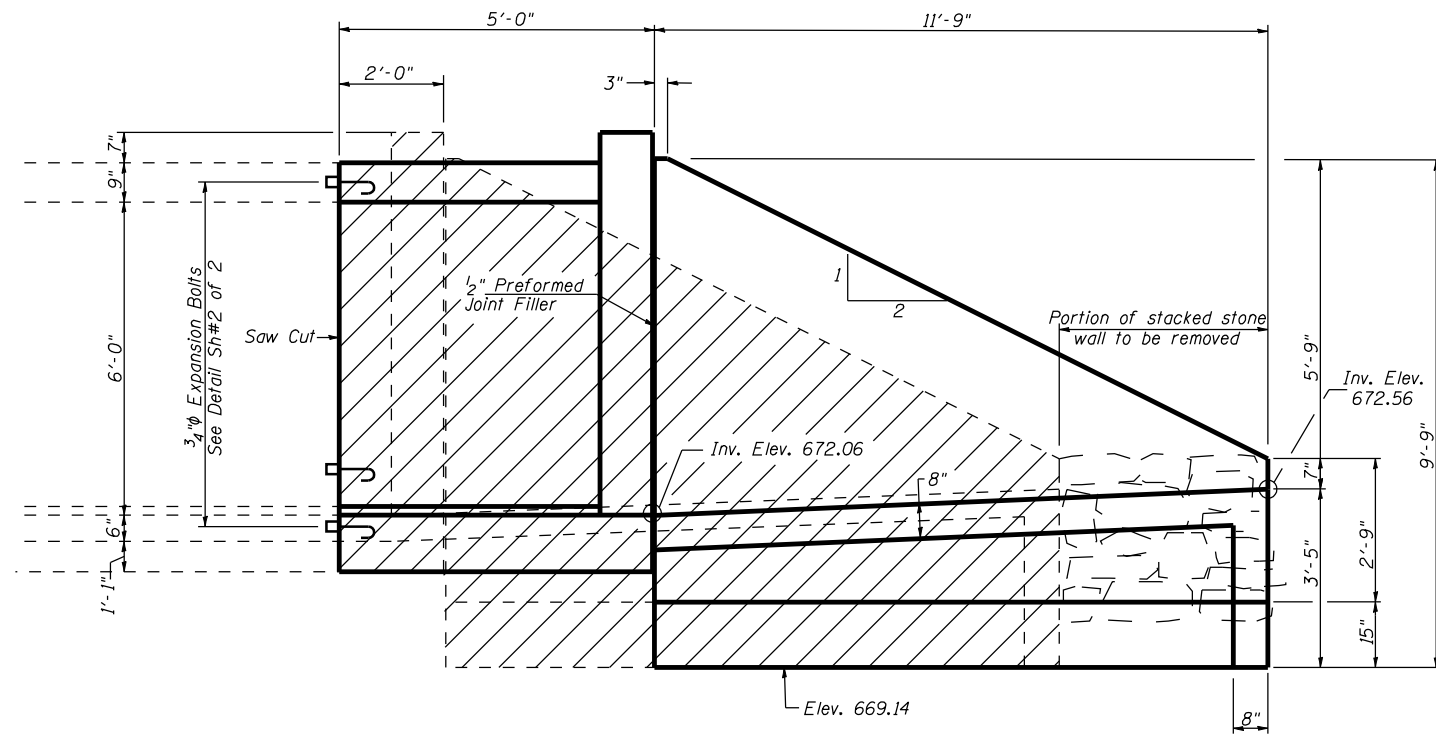


ROUTE NO.	SECTION	COUNTY	TOTAL SHEETS	SHEET NO.
F.A.U. 8239	RS,R	MONTGOMERY	302	160
FED. ROAD DIST. NO. 7	ILLINOIS	FED. AID PROJECT:		

SHEET NO. 1  
2 SHEETS

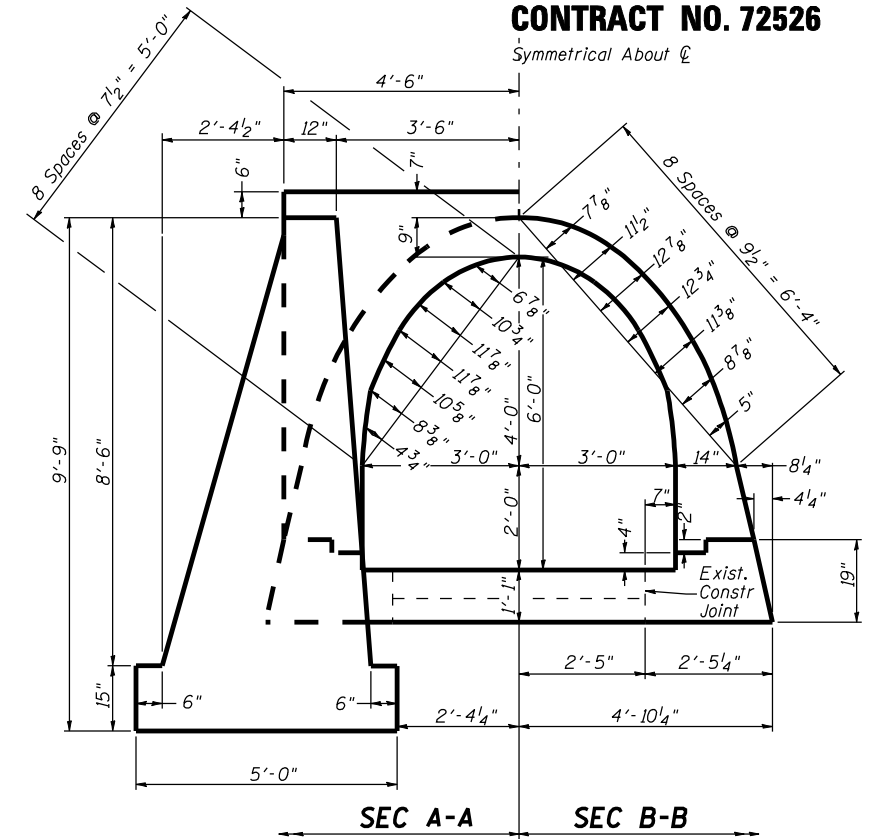
**CONTRACT NO. 72526**

Symmetrical About  $\bar{C}$

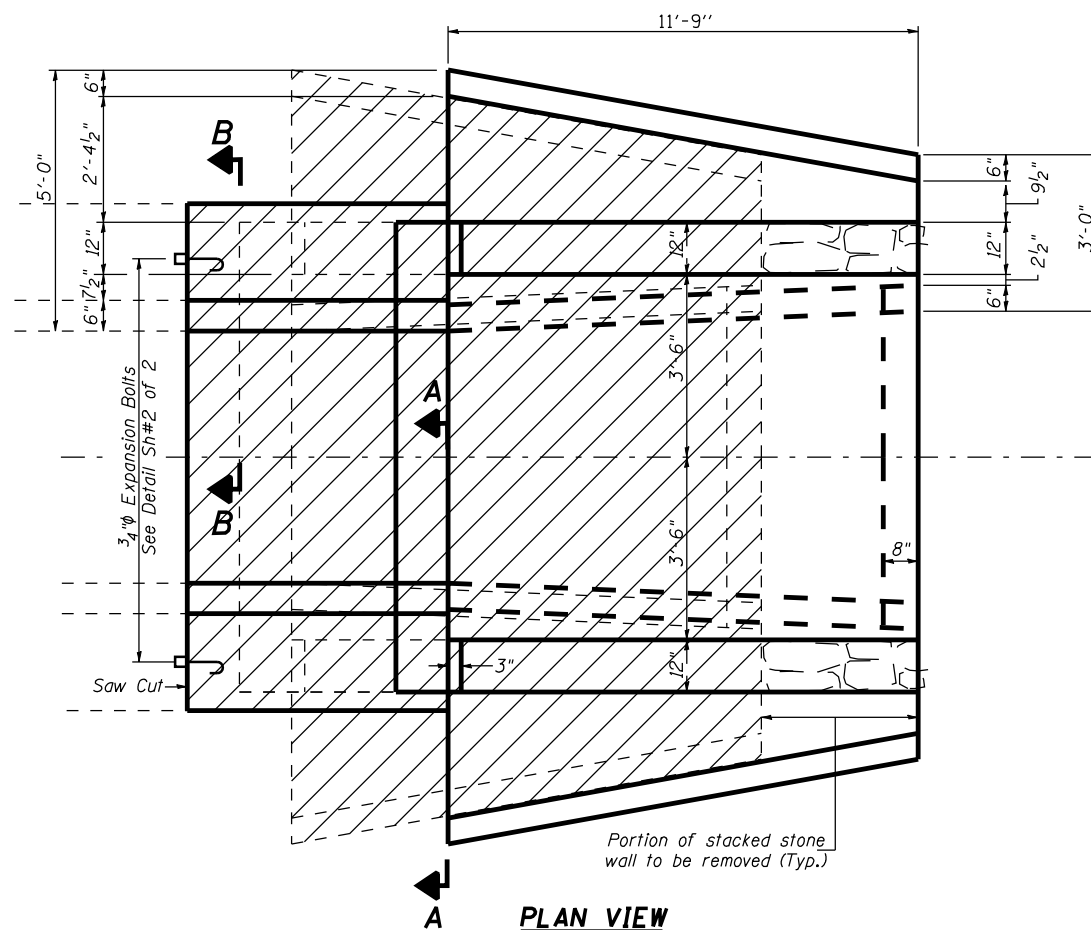


**ELEVATION VIEW**

Hatched area indicates Concrete Removal. the stacked stone retaining wall shall be included with "Headwall Removal".



**SECTION VIEW**



**PLAN VIEW**

**TOTAL BILL OF MATERIAL**

Bar	No.	Size	Length	Shape
a	8	#6	15'-0"	C
a1	8	#6	16'-1"	C
a2	12	#6	9'-2"	—
b	15	#4	6'-3"	—
h	62	#4	4'-9"	—
h1	14	#4	11'-5"	—
h2	10	#4	13'-2"	—
h3	4	#4	12'-9"	—
h4	4	#6	8'-8"	—
h5	12	#4	2'-5"	—
t	13	#4	7'-4"	—
v	16	#6	3'-2"	—
v1	24	#4	11'-8"	—
v2	8	#4	6'-7"	—
v3	10	#4	2'-3"	—
v4	6	#4	5'-9"	—
w	12	#4	11'-5"	—
ITEM		UNIT	TOTAL	
* Headwall Removal		EACH	1	
Concrete Box Culverts		CU YD	23.1	
Reinforcement Bars		POUND	1,590	
Expansion Bolts 3/4 Inch		EACH	20	

\* Approximately 20.0 Cu. Yd. and will include removal of 1'-0" beyond headwall.

**GENERAL NOTES**

- Reinforcement Bars shall conform to the requirements of AASHTO M31 or M322, Grade 60.
- Exposed edges shall have a 3/4" chamfer unless otherwise noted.
- For backfilling and embankment see Standard Specifications.
- Existing stacked stone wall shall only be removed to the end of the proposed wingwalls. Cost included with "Headwall Removal".
- In the event the Contractor damages the existing stacked stone wall beyond the end of the proposed wingwalls. The wall shall be returned to its original condition to the satisfaction of the Engineer at no additional cost to the contract.
- Plan dimensions and details relative to existing structure have been taken from existing plans and are subject to nominal construction variations. It shall be the Contractor's responsibility to verify such dimensions and details in the field and make necessary approved adjustments prior to construction or ordering of materials. Such variations shall not be cause for additional compensation for a change in the scope of the work, however, the Contractor will be paid for the quantity actually furnished at the unit price bid for the work.
- Expansion bolts shall be 3/4" diameter hooked bolts. Hooked bolts shall extend a minimum of 9" into new concrete.
- Proposed arch culvert extension and proposed headwall shall be poured monolithically.

DESIGNED	BAN
CHECKED	JOH
DRAWN	TC
CHECKED	BAN

**CULVERT DETAILS**  
**F.A.U. ROUTE 8239**  
**(OLD U.S. ROUTE 66)**  
**SECTION RS,R**  
**MONTGOMERY COUNTY**  
**STATION 765+98.45**

HUTCHISON ENGINEERING, INC.  
 JACKSONVILLE, ILLINOIS

Date: 2/8/2006