

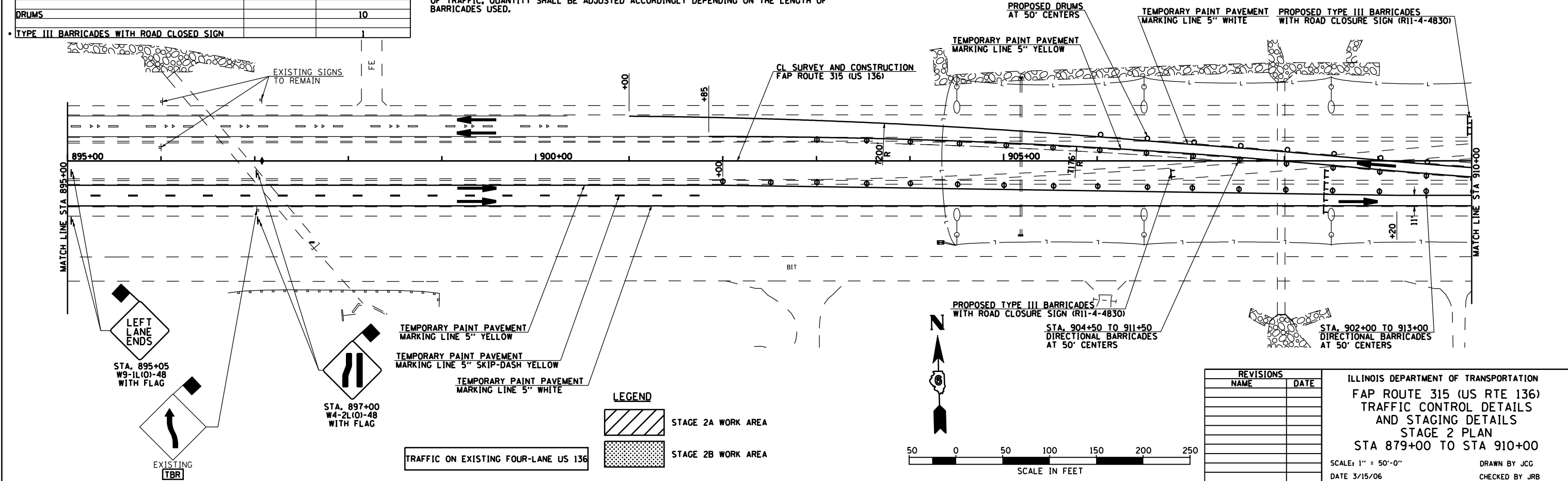
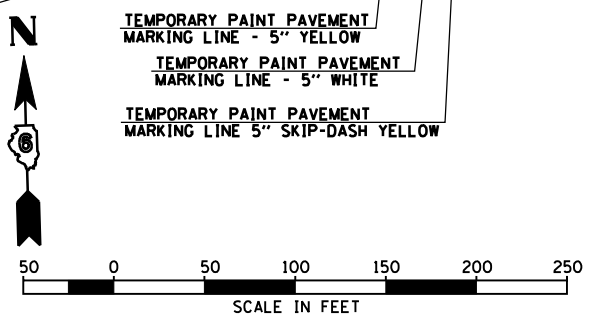
**STAGE 2 TRAFFIC CONTROL AND PROTECTION WEST END CROSSOVER - STANDARD 701416 SPECIAL APPROXIMATE BILL OF MATERIALS - FOR INFORMATION ONLY**

ITEM	SIGN NUMBER	ESTIMATED NUMBER REQUIRED
MEN WORKING	W21-1(0)-48	2
EXPRESSWAY ENDS 1000 FT	W8-1103(0)-48	2
LEFT LANE ENDS	W9-1L(0)-48	2
PAVEMENT WIDTH TRANSITION	W4-2L(0)-48	2
TWO WAY TRAFFIC	W6-3(0)-48	2
DIVIDED HIGHWAY	W6-1(0)-48	1
KEEP RIGHT	R4-7 (4860)	1
DIRECTIONAL BARRICADES		42
DRUMS		10
TYPE III BARRICADES WITH ROAD CLOSED SIGN		1

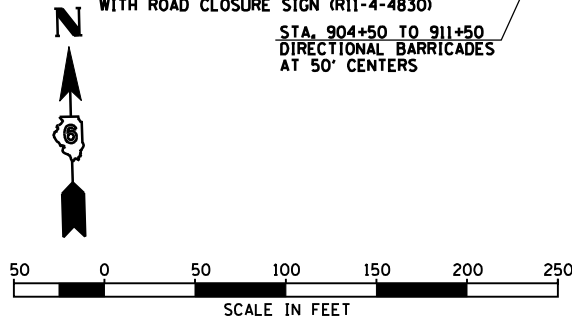
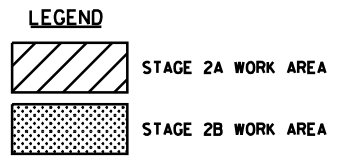
**STAGE 2 TEMPORARY SIGNS APPROXIMATE BILL OF MATERIALS - FOR INFORMATION ONLY**

ITEM	SIGN NUMBER	ESTIMATED NUMBER REQUIRED
MEN WORKING	W21-1(0)-48	1
ROAD CONSTRUCTION AHEAD	W20-1(0)-48	1
STOP	R1-1 (3636)	2
VERTICAL PANELS		31
TYPE III BARRICADES WITH ROAD CLOSED SIGNS	R11-4 (4830)	22

• TYPE III BARRICADES WERE ESTIMATED ASSUMING EACH BARRICADE WILL CLOSE ONE LANE OF TRAFFIC, QUANTITY SHALL BE ADJUSTED ACCORDINGLY DEPENDING ON THE LENGTH OF BARRICADES USED.



TEMPORARY PAINT PAVEMENT MARKING LINE 5" YELLOW  
 TEMPORARY PAINT PAVEMENT MARKING LINE 5" SKIP-DASH YELLOW  
 TEMPORARY PAINT PAVEMENT MARKING LINE 5" WHITE



REVISIONS	
NAME	DATE

ILLINOIS DEPARTMENT OF TRANSPORTATION  
 FAP ROUTE 315 (US RTE 136)  
 TRAFFIC CONTROL DETAILS  
 AND STAGING DETAILS  
 STAGE 2 PLAN  
 STA 879+00 TO STA 910+00  
 SCALE: 1" = 50'-0"  
 DATE 3/15/06  
 DRAWN BY JCG  
 CHECKED BY JRB