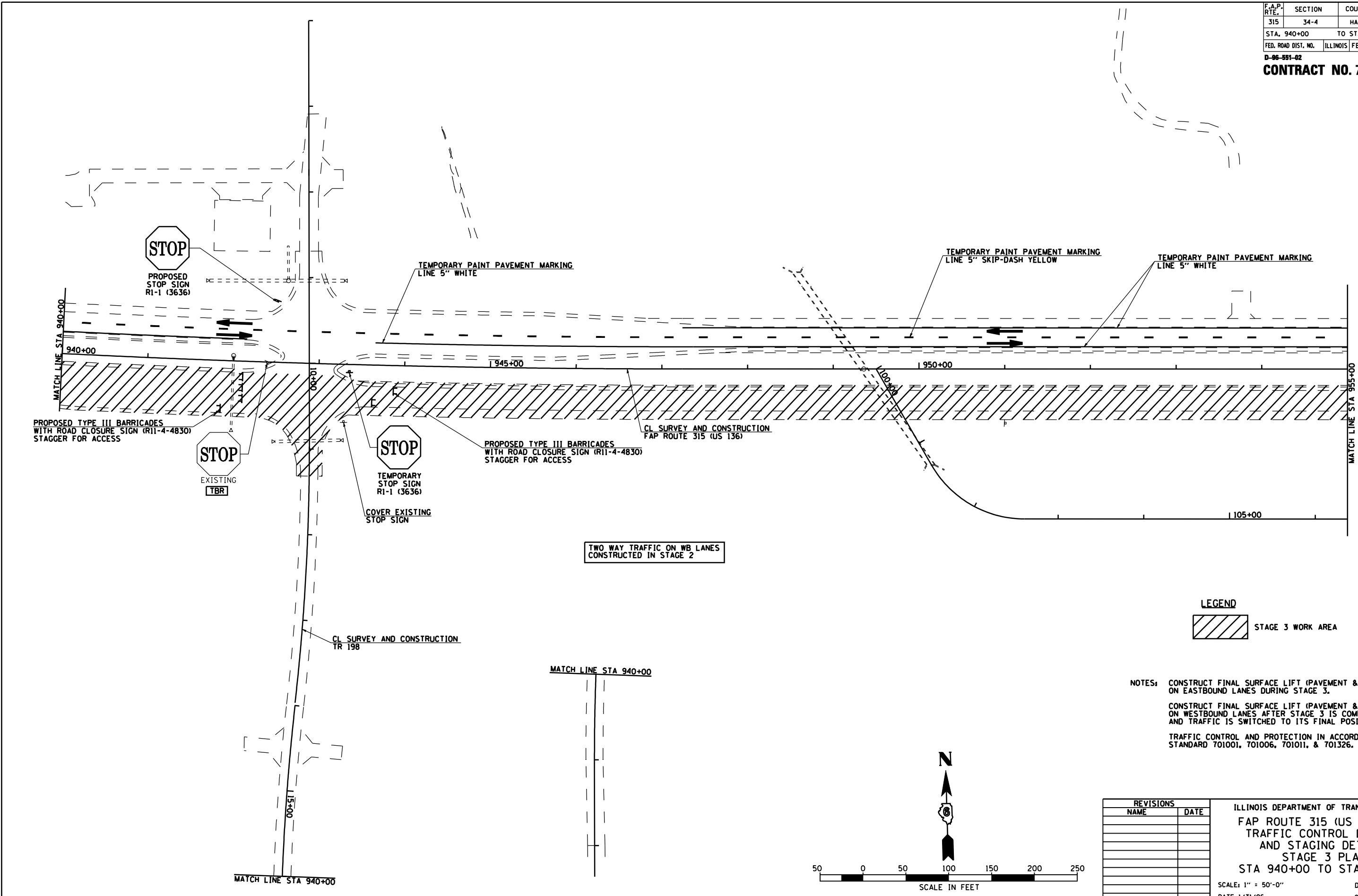
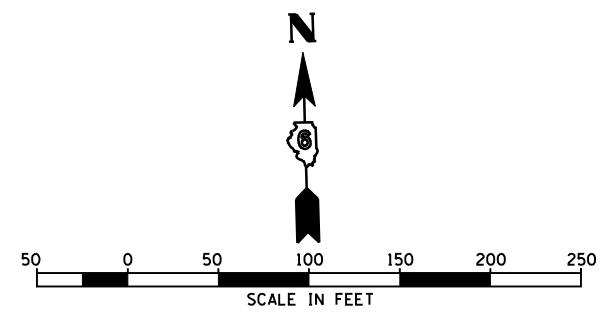


F.A.P. RTE.	SECTION	COUNTY	TOTAL SHEETS	SHEET NO.
315	34-4	HANCOCK	452	82
STA. 940+00		TO STA. 955+00		
FED. ROAD DIST. NO.	ILLINOIS	FED. AID PROJECT		
D-96-991-02				
<b>CONTRACT NO. 72680</b>				



**LEGEND**  
 STAGE 3 WORK AREA

**NOTES:** CONSTRUCT FINAL SURFACE LIFT (PAVEMENT & SHOULDERS) ON EASTBOUND LANES DURING STAGE 3.  
 CONSTRUCT FINAL SURFACE LIFT (PAVEMENT & SHOULDERS) ON WESTBOUND LANES AFTER STAGE 3 IS COMPLETED AND TRAFFIC IS SWITCHED TO ITS FINAL POSITION.  
 TRAFFIC CONTROL AND PROTECTION IN ACCORDANCE WITH STANDARD 701001, 701006, 701011, & 701326.



REVISIONS	
NAME	DATE

ILLINOIS DEPARTMENT OF TRANSPORTATION  
 FAP ROUTE 315 (US RTE 136)  
 TRAFFIC CONTROL DETAILS  
 AND STAGING DETAILS  
 STAGE 3 PLAN  
 STA 940+00 TO STA 955+00  
 SCALE: 1" = 50'-0"  
 DATE 1/31/06  
 DRAWN BY JCG  
 CHECKED BY JRB