

SEC 23, T 5 N, R 6 W, 4TH PM  
ROCK

F.A. RTE.	SECTION	COUNTY	TOTAL SHEETS	SHEET NO.
315	34-4	HANCOCK	452	122
STA. 30+00.00 TO STA. 44+00.00		ILLINOIS FED. AID PROJECT		

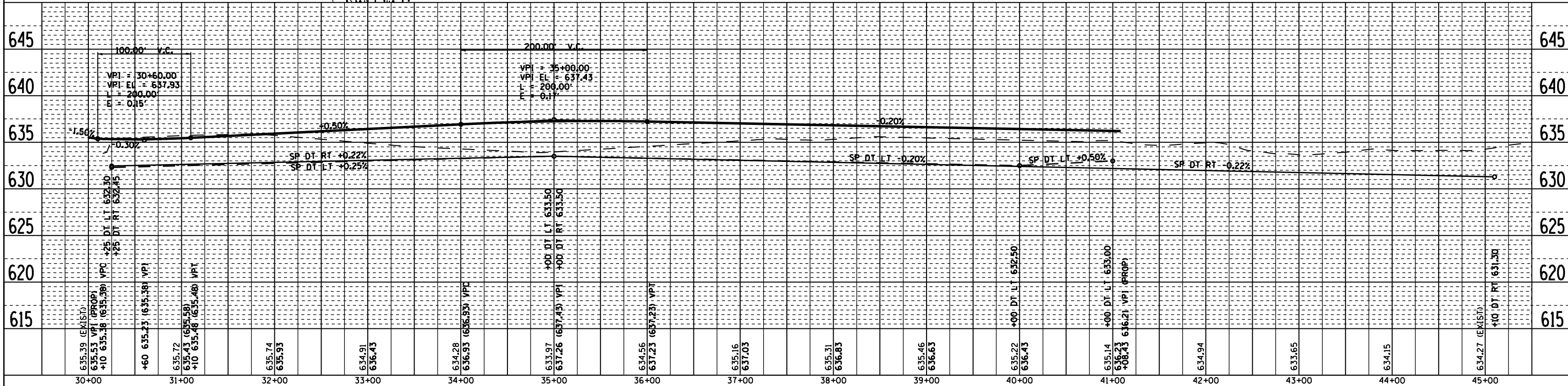
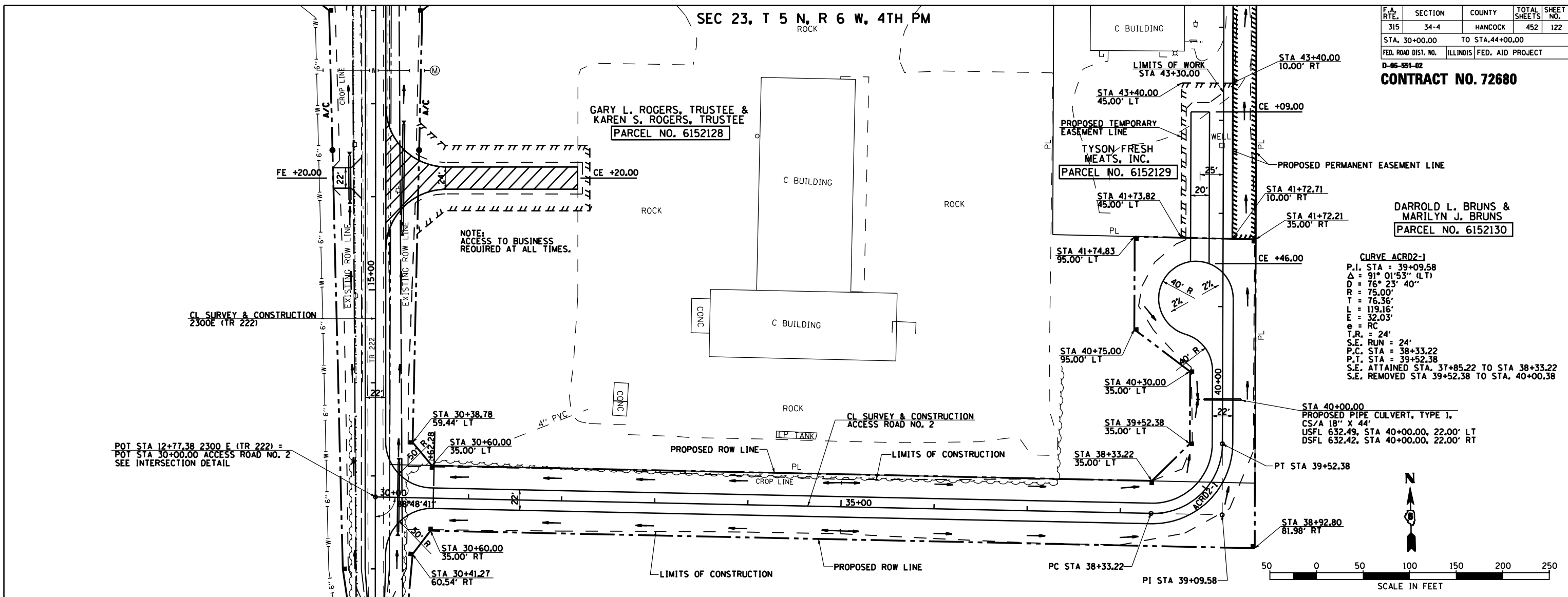
CONTRACT NO. 72680

DARROLD L. BRUNS & MARILYN J. BRUNS  
PARCEL NO. 6152130

**CURVE ACRO2-1**  
 P.I. STA = 39+09.58  
 Δ = 91° 01' 53" (LT)  
 D = 76° 23' 40"  
 R = 75.00'  
 L = 76.36'  
 T = 119.16'  
 E = 32.03'  
 e = RC  
 T.R. = 24'  
 S.E. RUN = 24'  
 P.C. STA = 38+33.22  
 P.T. STA = 39+52.38  
 S.E. ATTAINED STA. 37+85.22 TO STA 38+33.22  
 S.E. REMOVED STA 39+52.38 TO STA. 40+00.38

PLAN	DATE
SURVEYED	
PLOTTED	
CHECKED	
BY	
NO.	

PROFILE	DATE
SURVEYED	
PLOTTED	
CHECKED	
BY	
NO.	



ROADWAY PLAN & PROFILE ACCESS ROAD NO. 2, STA 30+00.00 TO STA 44+00.00