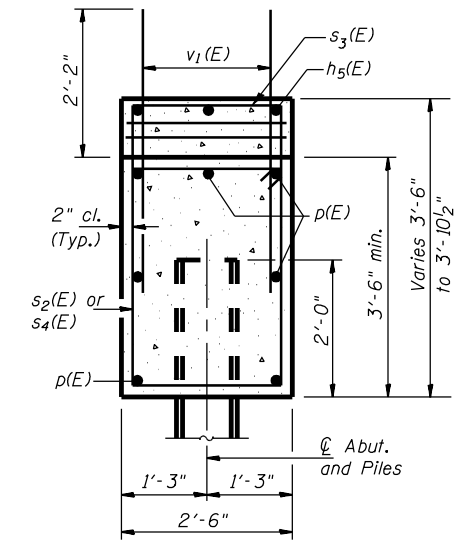
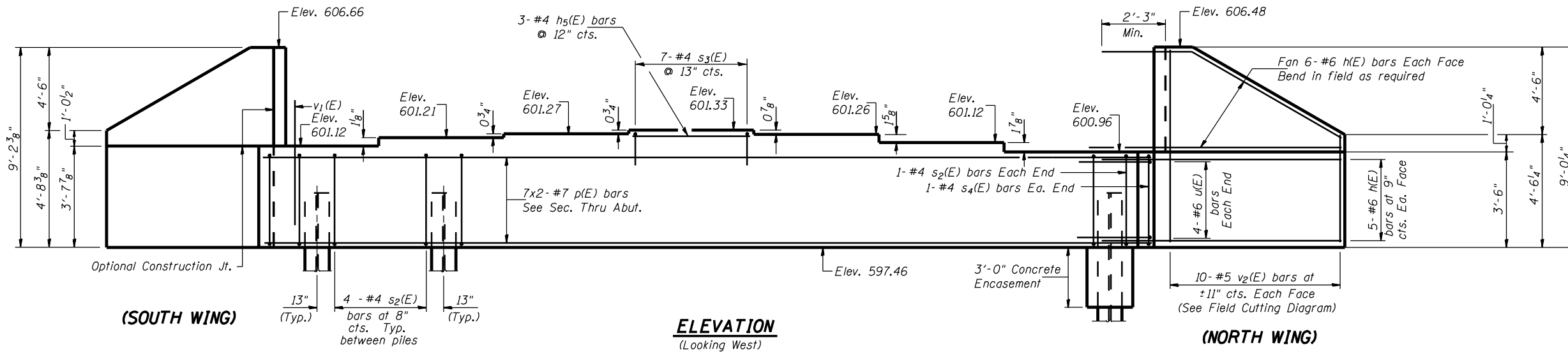


Notes:
Pour steps monolithically with cap.

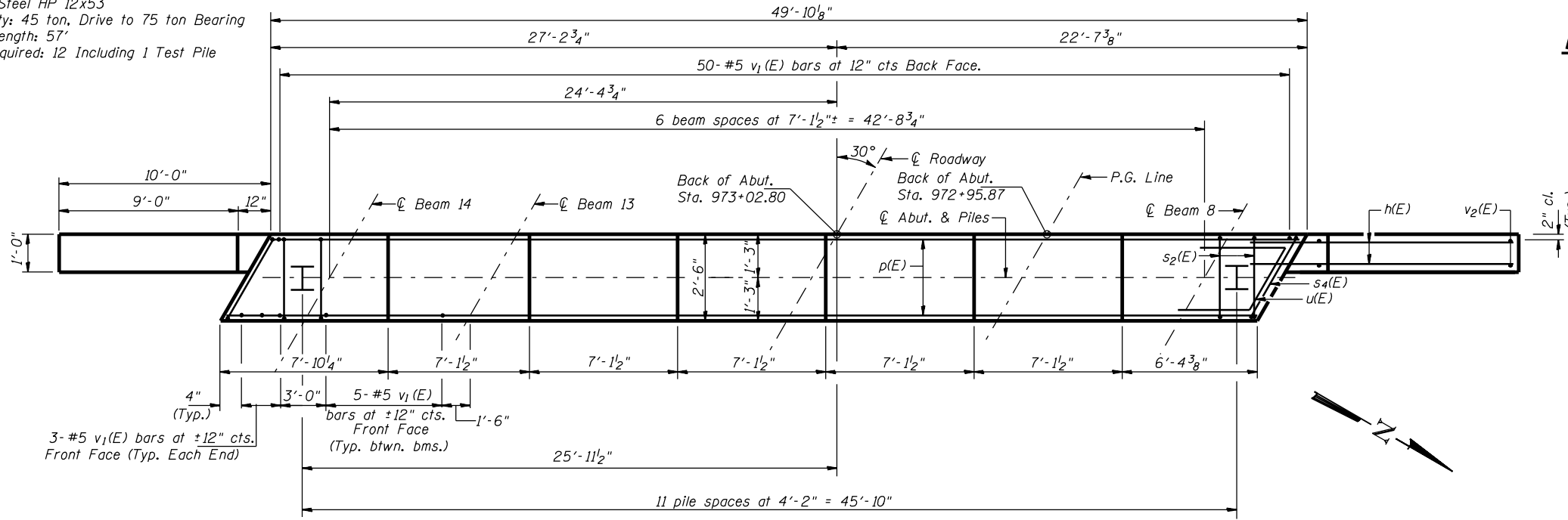
| | | | | | |
|-----------------------|----------|-------------|--------------|--------------------|---------------------------|
| ROUTE NO. | SEC. | COUNTY | TOTAL SHEETS | SHEET NO. | SHEET NO. 15 21 SHEETS |
| FAP 315 | * | HANCOCK | 452 | 192 | |
| FED. ROAD DIST. NO. 7 | ILLINOIS | PROJECT | | | |
| * 34-4B | | D-96-551-02 | | CONTRACT NO. 72680 | |



SEC. THRU ABUT.

PILE DATA

Type: Steel HP 12x53
Capacity: 45 ton, Drive to 75 ton Bearing
Est. Length: 57'
No. Required: 12 Including 1 Test Pile



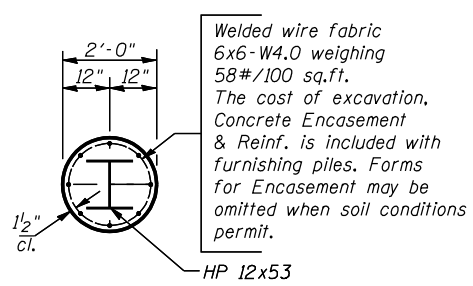
PLAN

MIN. BAR LAP
#7 bar = 3'-5"

BILL OF MATERIAL

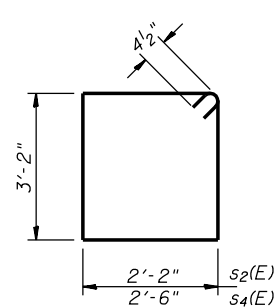
| Bar | No. | Size | Length | Shape |
|----------------------------------|-------|------|--------|-------|
| h(E) | 44 | #6 | 12'-0" | — |
| h5(E) | 3 | #4 | 6'-10" | — |
| p(E) | 14 | #7 | 26'-6" | — |
| s2(E) | 46 | #4 | 11'-5" | □ |
| s3(E) | 7 | #4 | 5'-6" | □ |
| s4(E) | 2 | #4 | 12'-1" | □ |
| u(E) | 8 | #6 | 10'-5" | ▤ |
| v1(E) | 86 | #5 | 4'-4" | — |
| v2(E) | 20 | #5 | 13'-0" | — |
| Concrete Structures | CU YD | | 22.4 | |
| Reinforcement Bars, Epoxy Coated | POUND | | 2,740 | |
| Structure Excavation | CU YD | | 140 | |
| Furnishing Steel Piles HP12x53 | FOOT | | 627 | |
| Driving Steel Piles HP12x53 | FOOT | | 627 | |
| Test Pile Steel HP12x53 | EACH | | 1 | |

Reinforcement bars designated (E) shall be epoxy coated.
Bars indicated thus 20x3-#5 etc. indicates 20 lines of bars with 3 lengths per line.

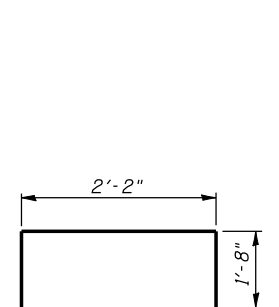


SECTION A-A

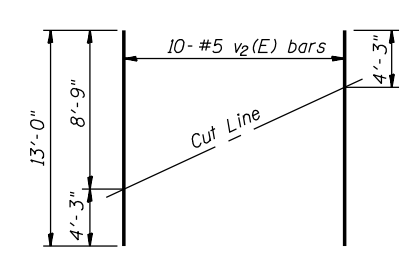
PILE ENCASEMENT DETAIL



BAR s2(E) & s4(E)



BARS s3(E)



FIELD CUTTING DIAGRAM

Order v2(E) full length. Cut as shown and use remainder of bars in opposite face.

WEST ABUTMENT (E.B.L.)
FAP ROUTE 315 OVER PRAIRIE CREEK
SECTION 34-4B
HANCOCK COUNTY
STATION 973+28.00
STR. NO. 034-0506 (WBL)
STR. NO. 034-0507 (EBL)
HUTCHISON ENGINEERING, INC.
JACKSONVILLE, ILLINOIS
 Date: January 31, 2006