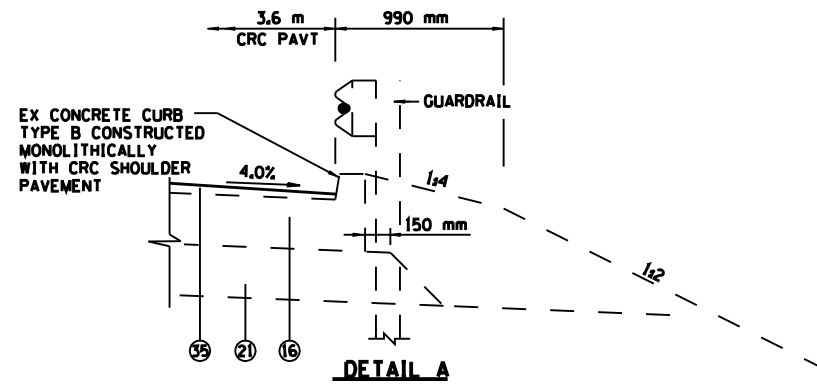


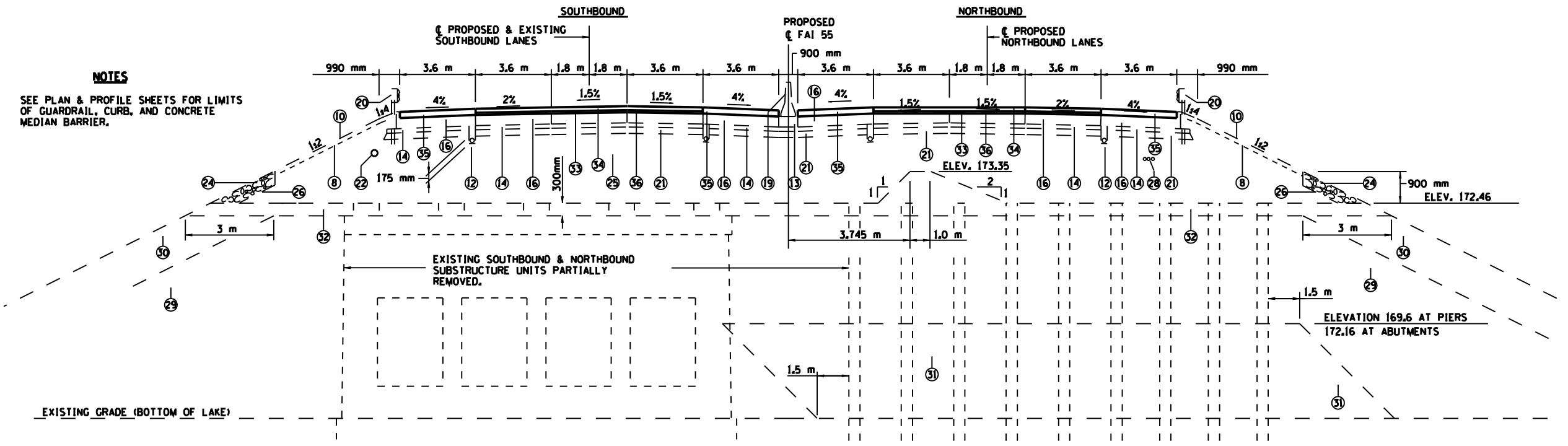
F.A.I. RTE.	SECTION	COUNTY	TOTAL SHEETS	SHEET NO.
55	(B4-4(B)-111)	SANGAMON	9	4
STA.		TO STA.		
FED. ROAD DIST. NO.	ILLINOIS	FED. AID PROJECT		

- EXISTING LEGEND**
- ① POLYMERIZED BITUMINOUS CONCRETE SURFACE COURSE, SUPERPAVE, MIXTURE D, N90 (38 mm)
 - ② POLYMERIZED LEVELING BINDER (MACHINE METHOD) SUPERPAVE N90 (VARIABLE DEPTH, MIN 44 mm)
 - ③ EXISTING PAVEMENT TO REMAIN
 - ④ EXISTING STABILIZED SHOULDER TO REMAIN
 - ⑤ BITUMINOUS SHOULDERS (VARIABLE DEPTH)
 - ⑦ BITUMINOUS CONCRETE PAVEMENT (FULL DEPTH), SUPERPAVE N70 345mm
 - ⑧ FURNISHING AND PLACING TOPSOIL, 150 mm
 - ⑨ BITUMINOUS SHOULDER 200 mm
 - ⑩ FIBER MAT
 - ⑪ NOT USED
 - ⑫ PIPE UNDERDRAINS 100 mm, SEE DETAILS
 - ⑬ PORTLAND CEMENT CONCRETE SHOULDERS - 290 mm
 - ⑭ STABILIZED SUB-BASE 100 mm
 - ⑮ GRANULAR EMBANKMENT, SPECIAL
 - ⑯ CONTINUOUSLY REINFORCED PORTLAND CEMENT CONCRETE PAVEMENT 290 mm
 - ⑰ AGGREGATE SHOULDER, TYPE B 150mm
 - ⑲ CONCRETE BARRIER
 - ⑳ STEEL PLATE BEAM GUARDRAIL
 - ㉑ SUB-BASE GRANULAR MATERIAL TYPE B 300 mm
 - ㉒ DUCTILE WATER MAIN 600 mm
 - ㉓ NOT USED
 - ㉔ STONE RIPRAP, CLASS A4
 - ㉕ EARTH EMBANKMENT
 - ㉖ FILTER FABRIC FOR USE WITH RIPRAP
 - ㉗ STRIP REFLECTIVE CRACK CONTROL TREATMENT
 - ㉘ ELECTRICAL CONDUIT
 - ㉙ ROCKFILL - CORE
 - ㉚ ROCKFILL - PERIMETER
 - ㉛ ROCKFILL - PROTECTION
 - ㉜ ROCKFILL - CAP

- PROPOSED LEGEND**
- ⑬ PROPOSED LEVELING BINDER (25 mm + VARIES)
 - ⑭ PROPOSED BITUMINOUS SURFACE COURSE (38 mm)
 - ⑮ PROPOSED BITUMINOUS SURFACE COURSE (VARIABLE DEPTH)
 - ⑯ PORTLAND CEMENT CONCRETE SURFACE REMOVAL (VARIABLE DEPTH)



NOTES
SEE PLAN & PROFILE SHEETS FOR LIMITS OF GUARDRAIL, CURB, AND CONCRETE MEDIAN BARRIER.



TYPICAL SECTION
STA. 143+367 TO STA. 143+840
BRIDGE OMISSION
STA 143+519.64 TO STA 143+739.7

REVISIONS		DATE	ILLINOIS DEPARTMENT OF TRANSPORTATION
NAME			
			TYPICAL SECTIONS

FAI 55
SECTION (B4-4(B)-111)
SANGAMON COUNTY

SCALE: VERT. _____
HORIZ. _____

DATE _____ DRAWN BY _____
CHECKED BY _____

PLOT DATE: 1/25/2006
 FILE NAME: c:\p060\proj\55\4833888\typical2.dgn
 PLOT SCALE: 1/8" = 1'-0"
 USER NAME: laughlin