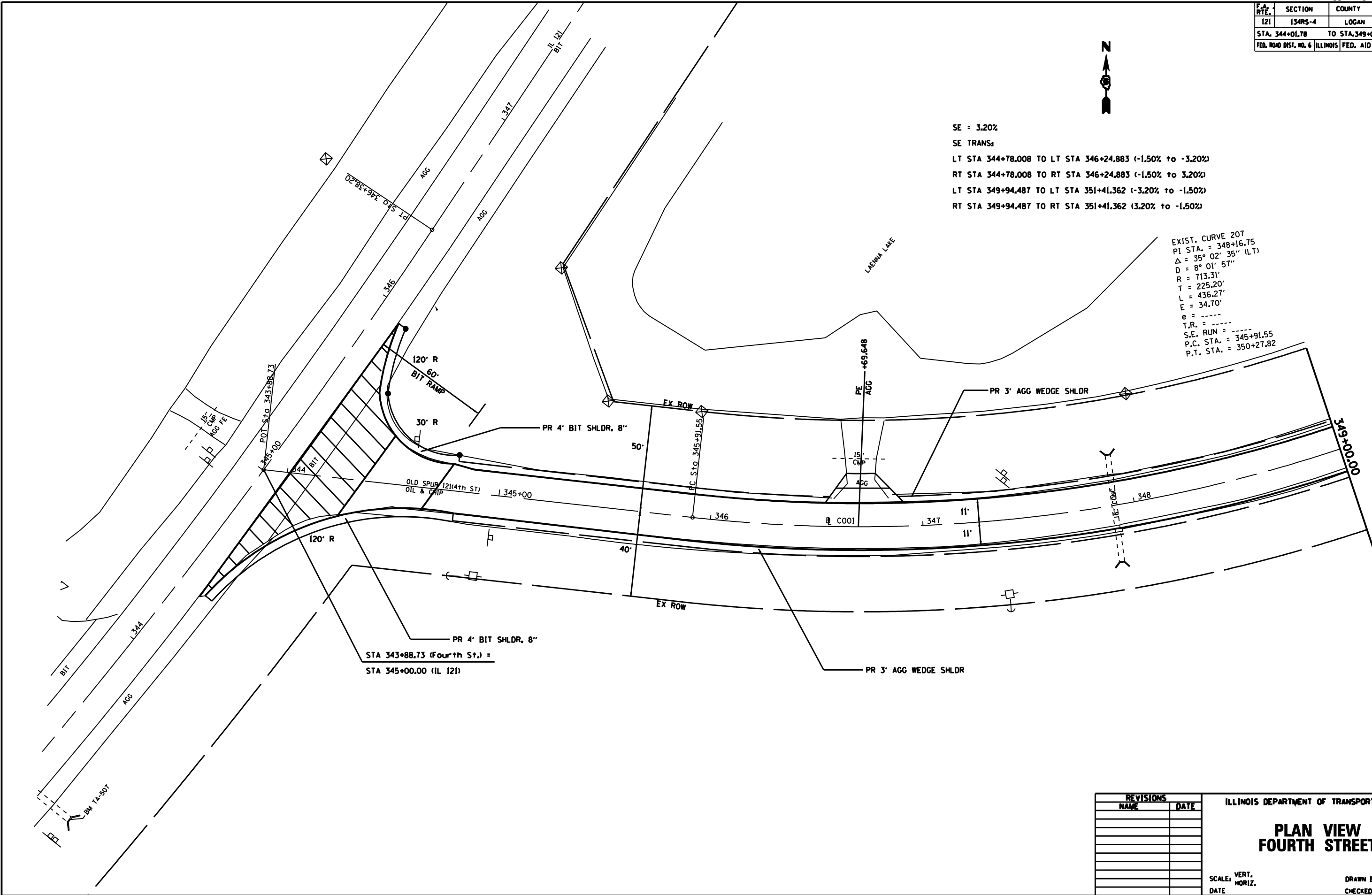


F.A. RTE.	SECTION	COUNTY	TOTAL SHEETS	SHEET NO.
121	134RS-4	LOGAN	67	11
STA. 344+01.78		TO STA. 349+00.00		
FED. ROAD DIST. NO. 6		ILLINOIS FED. AID PROJECT		



SE = 3.20%
 SE TRANS:
 LT STA 344+78.008 TO LT STA 346+24.883 (-1.50% to -3.20%)
 RT STA 344+78.008 TO RT STA 346+24.883 (-1.50% to 3.20%)
 LT STA 349+94.487 TO LT STA 351+41.362 (-3.20% to -1.50%)
 RT STA 349+94.487 TO RT STA 351+41.362 (3.20% to -1.50%)

EXIST. CURVE 207
 PI STA. = 348+16.75
 $\Delta = 35^{\circ} 02' 35''$ (LT)
 $D = 8^{\circ} 01' 57''$
 $R = 713.31'$
 $T = 225.20'$
 $L = 436.27'$
 $E = 34.70'$
 $e = \text{---}$
 $T.R. = \text{---}$
 $S.E. \text{ RUN} = \text{---}$
 $P.C. \text{ STA.} = 345+91.55$
 $P.T. \text{ STA.} = 350+27.82$



STA 343+88.73 (Fourth St.) =
 STA 345+00.00 (IL 121)

REVISIONS	
NAME	DATE

ILLINOIS DEPARTMENT OF TRANSPORTATION
**PLAN VIEW
 FOURTH STREET**
 SCALE: VERT. _____
 HORIZ. _____
 DATE _____
 DRAWN BY: BDK
 CHECKED BY: JCN

PLOT DATE: 12/16/2008
 FILE NAME: I:\projects\72a12\134rs-4\134rs-4.dwg
 PLOT SCALE: 1/4" = 1'-0"
 USER: JCN