

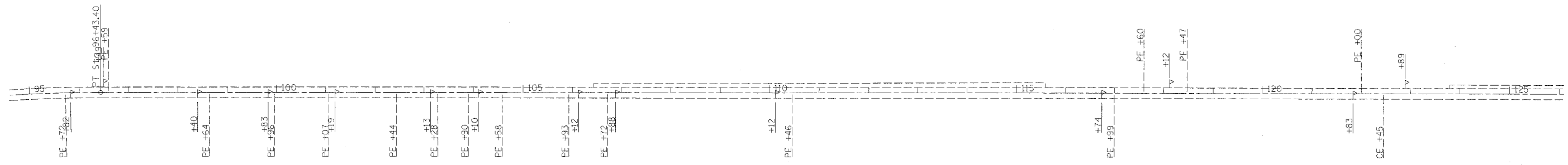
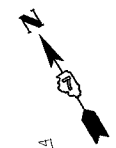
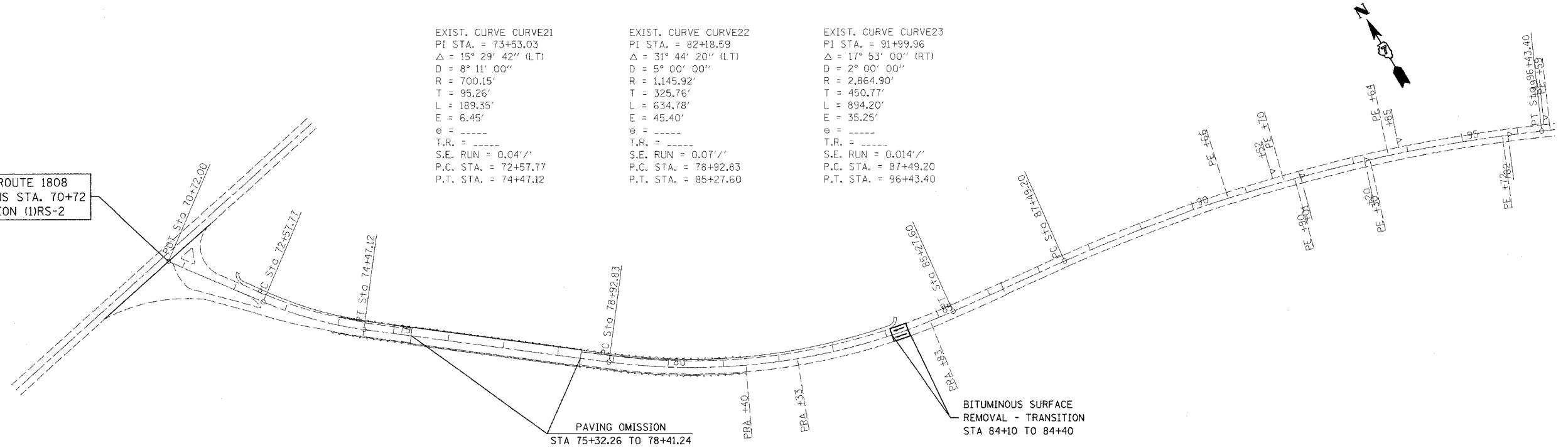
F.A.S. RTE.	SECTION	COUNTY	TOTAL SHEETS	SHEET NO.
1808	(1)RS-2	LAWRENCE	15	8
STA.		TO STA.		
FED. ROAD DIST. NO.		ILLINOIS	FED. AID PROJECT	

EXIST. CURVE CURVE21
 PI STA. = 73+53.03
 $\Delta = 15^\circ 29' 42''$ (LT)
 D = 8' 11" 00"
 R = 700.15'
 T = 95.26'
 L = 189.35'
 E = 6.45'
 $e =$ -----
 T.R. = -----
 S.E. RUN = 0.04'/'
 P.C. STA. = 72+57.77
 P.T. STA. = 74+47.12

EXIST. CURVE CURVE22
 PI STA. = 82+18.59
 $\Delta = 31^\circ 44' 20''$ (LT)
 D = 5' 00" 00"
 R = 1,145.92'
 T = 325.76'
 L = 634.78'
 E = 45.40'
 $e =$ -----
 T.R. = -----
 S.E. RUN = 0.07'/'
 P.C. STA. = 78+92.83
 P.T. STA. = 85+27.60

EXIST. CURVE CURVE23
 PI STA. = 91+99.96
 $\Delta = 17^\circ 53' 00''$ (RT)
 D = 2' 00" 00"
 R = 2,864.90'
 T = 450.77'
 L = 894.20'
 E = 35.25'
 $e =$ -----
 T.R. = -----
 S.E. RUN = 0.014'/'
 P.C. STA. = 87+49.20
 P.T. STA. = 96+43.40

FAS ROUTE 1808
 BEGINS STA. 70+72
 SECTION (1)RS-2



REVISIONS	
NAME	DATE

ILLINOIS DEPARTMENT OF TRANSPORTATION

PLAN SHEET
STA 70+72 TO
STA 125+00

SCALE: VERT. _____
 HORIZ. _____

DATE _____ DRAWN BY _____
 CHECKED BY _____

PLOT DATE = 10/15/2005
 FILE NAME = c:\projects\74058\plan\p808a.dwg
 USER NAME = bdf/bank