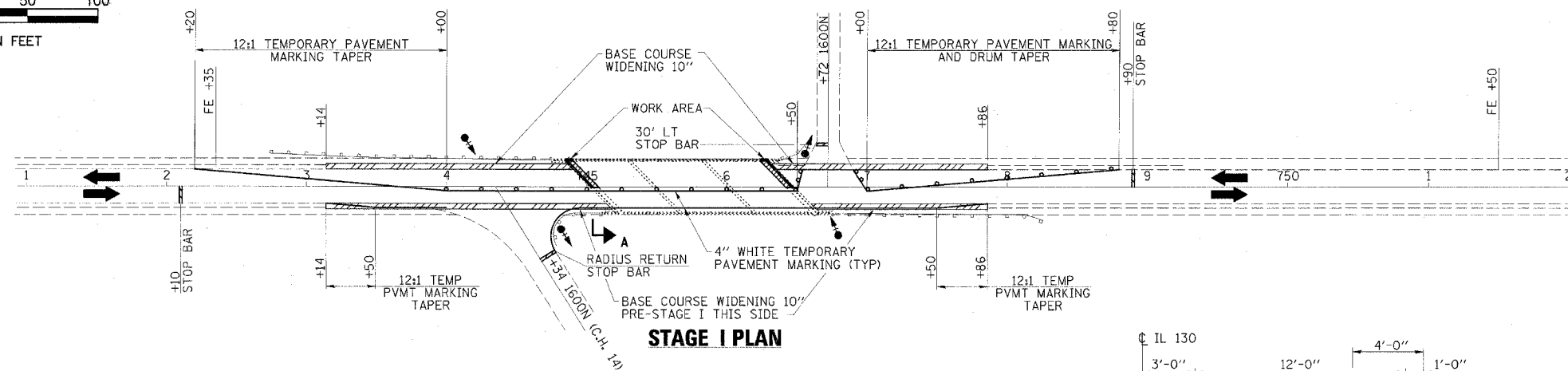
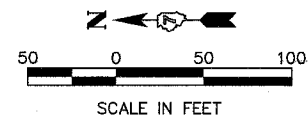
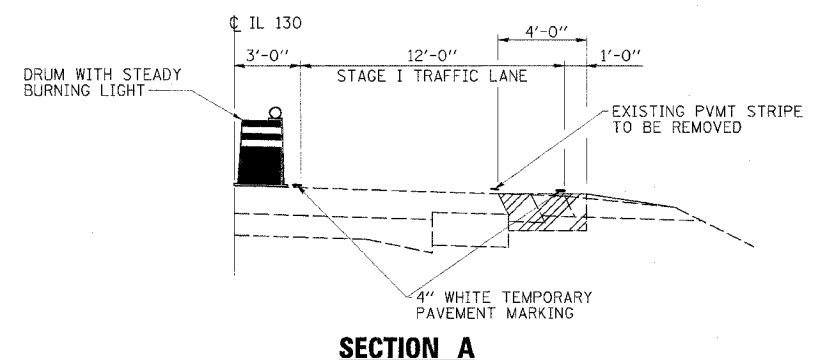


FAP RTE	SECTION	COUNTY	TOTAL SHEETS	SHEET NO.
116		RICHLAND	31	5
STA. 741+00		TO STA. 752+00		
FED. ROAD DIST. NO.		ILLINOIS FED. AID PROJECT		

D-7 JOINT REPAIRS 2006-3



STAGE I PLAN



SECTION A

**GENERAL NOTES**

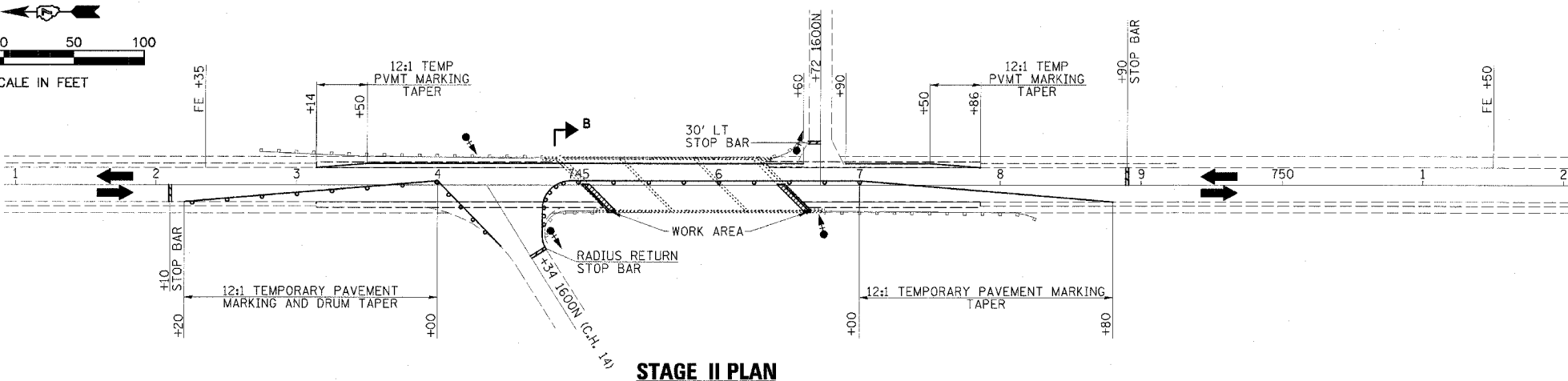
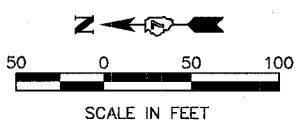
1. TRAFFIC CONTROL SHALL BE ERECTED AS SHOWN AND ACCORDING TO "TRAFFIC CONTROL AND PROTECTION, STANDARD 701316."
2. SEE SPECIAL PROVISIONS FOR ADDITIONAL TRAFFIC CONTROL REQUIREMENTS.
3. MOUNT "NO TURN ON RED" SIGN R10-115-2424 ON EACH SIDE ROAD TRAFFIC SIGNAL SUPPORT.
4. CONSTRUCT TEMPORARY RUMBLE STRIPS AT LOCATIONS SHOWN ON STANDARD 701316.
5. COVER SIDEROAD STOP SIGNS WHEN TEMPORARY SIGNALS ARE IN USE.

**SCHEDULE OF QUANTITIES**

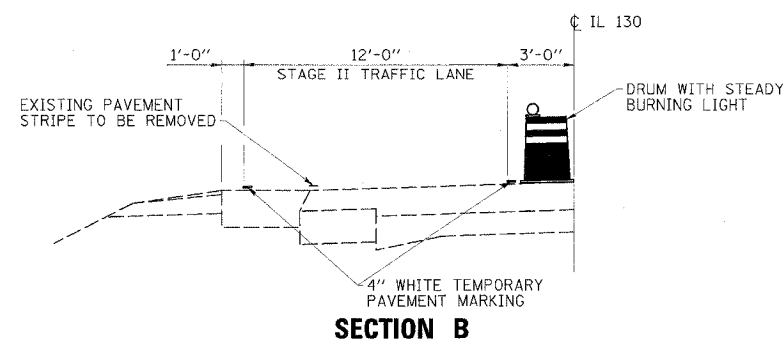
TEMPORARY BRIDGE TRAFFIC SIGNALS	- 1 EACH
TEMPORARY RUMBLE STRIPS	- 6 EACH
TRAFFIC CONTROL AND PROTECTION, STANDARD 701316	- 1 EACH

**LEGEND**

- WORK AREA
- DRUM WITH STEADY BURNING LIGHT
- TRAFFIC SIGNAL WITH BACKPLATE, SIGNAL DIRECTION INDICATED
- PAVED SHOULDER REMOVAL AND BASE COURSE WIDENING 10"



STAGE II PLAN



SECTION B

**S.N. 080-0021 STAGE CONSTRUCTION PLANS**  
**IL 130 OVER LONG BRANCH CREEK**  
**FAP RTE 116 (IL 130)**  
**D-7 JOINT REPAIRS 2006-3**  
**RICHLAND COUNTY**  
**STATION 745+75.00**

**ESCA**  
**CONSULTANTS, INC.**

DESIGNED BY:	MTD	11/05
DRAWN BY:	JDK	11/05
CHECKED BY:	MTD	11/05
APPROVED BY:	RDP	1/06