

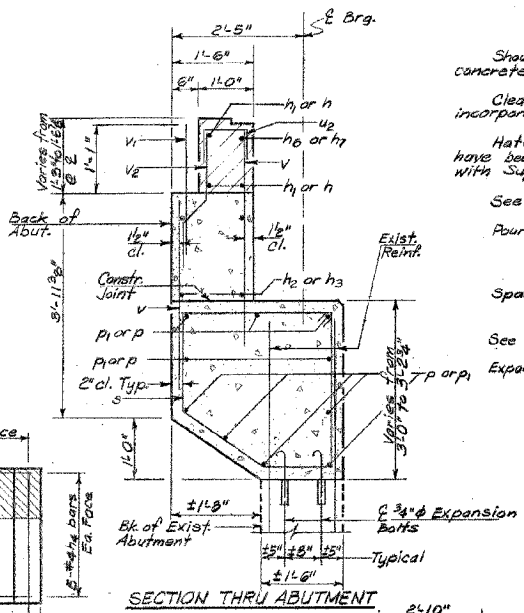
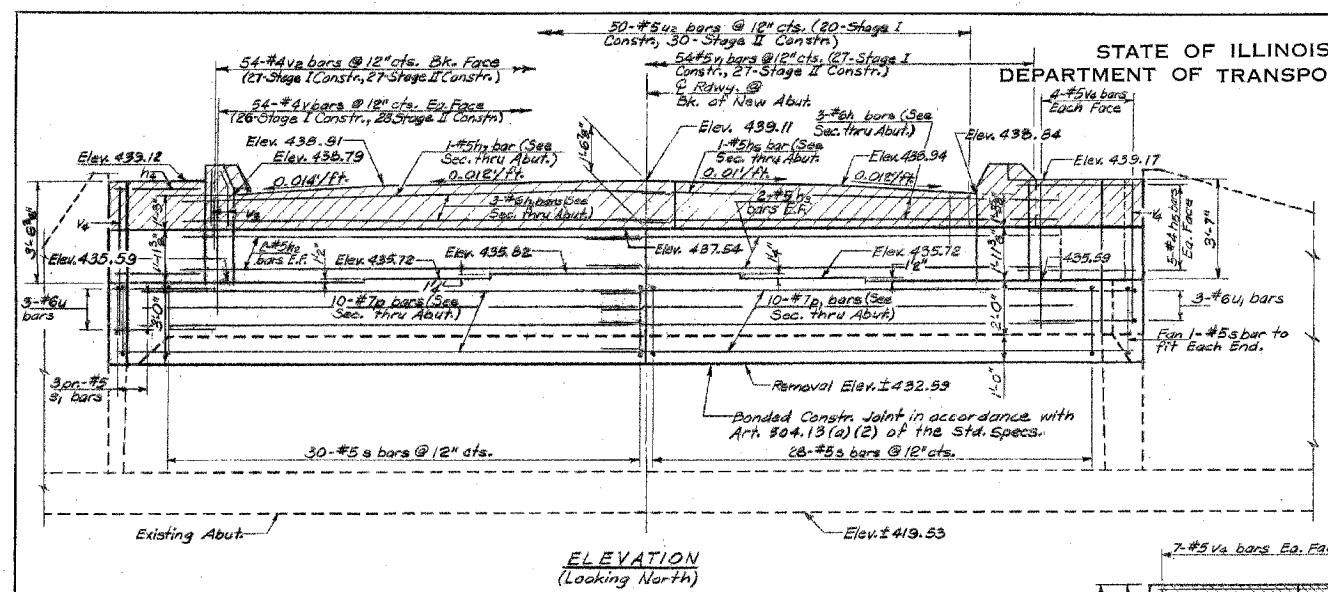
ROUTE NO.	SECTION	COUNTY	TOTAL SHEETS	SHEET NO.
FAP 116	*	RICHLAND	31	17
STA.	TO STA.			
FED. ROAD DIST. NO.	ILLINOIS	FED. AID PROJECT		

* D-7 Joint Repairs 2006-3

STATE OF ILLINOIS
DEPARTMENT OF TRANSPORTATION

ROUTE NO.	SECTION	COUNTY	TOTAL SHEETS	SHEET NO.
F.A. 116	123BR-3	RICHLAND	18	10
FED. ROAD DIST. NO.	ILLINOIS	FED. AID PROJECT		

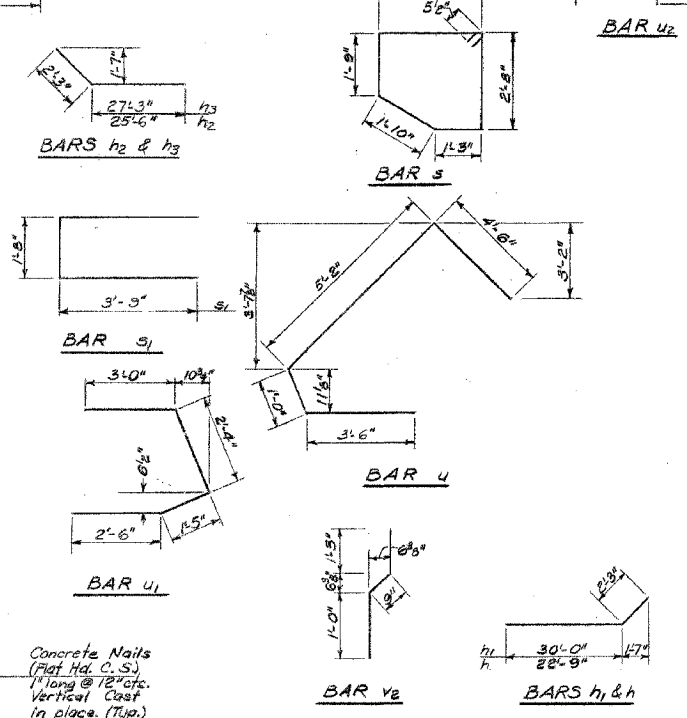
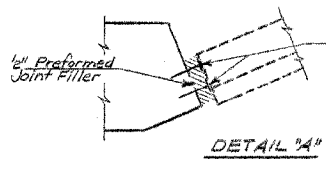
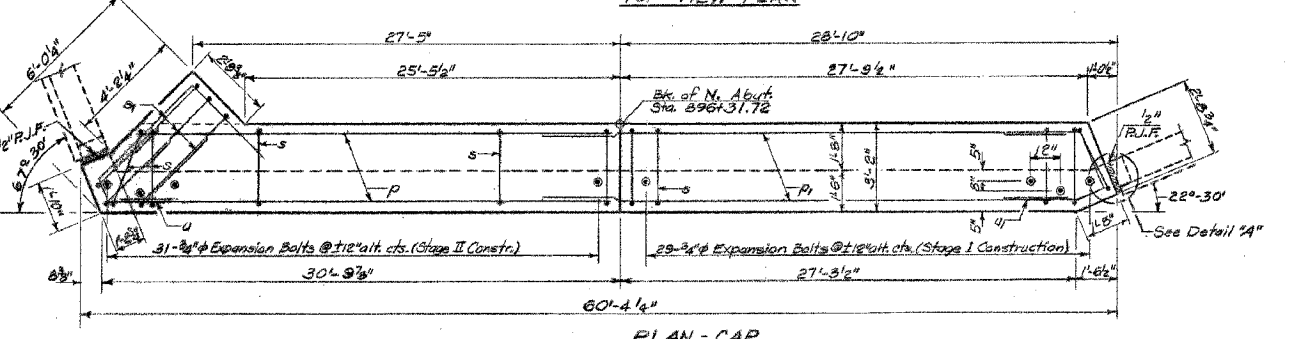
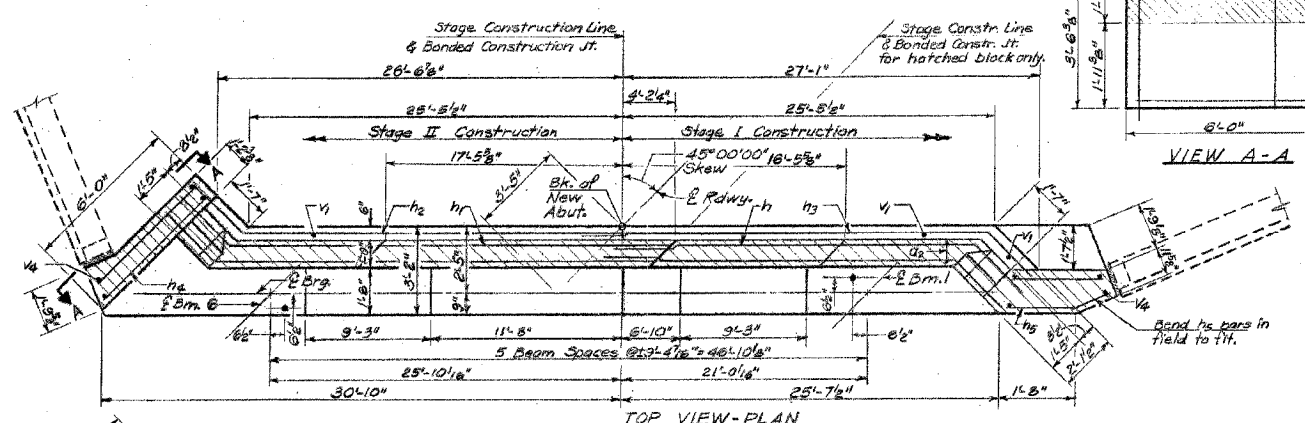
13 SHEETS



Notes:
Shoulder transition to wingwall shall be shaped with broken concrete. Cost incidental.
Clean existing reinforcement, cut to fit when necessary, and incorporate into new concrete.
Hatched area to be poured after superstructure forms have been removed. Quantity of Class X Concrete included with Superstructure.
See Sht. #12 for Concrete Removal Details.
Pour steps monolithically with cap.
Space reinforcement in cap to miss Anchor Bolts.
See sht. #6 for Curb End Details.
Expansion bolts shall be anchored into sound concrete.

MIN. BAR LAPS

#5 bar	1'-3"
#6 bar	2'-0"
#7 bar	2'-6"



**NORTH ABUTMENT
BILL OF MATERIAL**

Bar	No.	Size	Length	Shape
h1	3	#6	25'-0"	U
h2	3	#6	32'-3"	U
h3	4	#5	27'-9"	U
h4	4	#5	29'-6"	U
h5	10	#4	3'-2"	U
h6	10	#4	3'-0"	U
h7	1	#5	22'-6"	U
h7	1	#5	30'-0"	U
p	10	#7	29'-1"	U
p1	10	#7	30'-6"	U
s	60	#5	11'-5"	U
s1	6	#5	3'-2"	U
u	3	#6	14'-2"	U
u1	3	#6	9'-3"	U
u2	50	#5	1'-11"	U
v	108	#4	3'-8"	U
v1	54	#4	2'-10"	U
v2	54	#4	3'-0"	U
v3	8	#4	2'-8"	U
v4	22	#5	5'-3"	U
Class X Concrete		Cu Yds.	26.5	
Expansion Bolts (3/4")		Each	80	
Reinforcement Bars		Lbs.	3460	
Concrete Removal		Cu Yds.	11.5	

**NORTH ABUTMENT
F.A. RTE. 116 SEC. 123 BR-3
RICHLAND COUNTY
STA. 897+00.00**

DESIGNED: STEVEN K. DOERMAN
CHECKED: DARRID BARDICK
DRAWN: E. V. TAYLOR
CHECKED: SKD D.B.

EXAMINED: [Signature]
PASSED: [Signature]
APPROVED: [Signature]

JANUARY 25, 1983