

BENCHMARK: Chiseled "C" on SE Wingwall of Existing Structure, Station 745+75, Elev. 447.10

EXISTING STRUCTURE: SN 080-0021 was originally built in 1982 as Section 123 BR-2. The superstructure consists of 3 continuous spans of W24 rolled steel beams on pile bent abutments and piers. The back-to-back abutments dimension measures 145'-10 1/4" while the out-to-out width measures 39'-2". The existing expansion joints shall be removed and replaced. Traffic to be maintained utilizing stage construction.

No salvage.

STATE OF ILLINOIS
DEPARTMENT OF TRANSPORTATION

* D-7 JOINT REPAIRS 2006-3

ROUTE NO.	SECTION	COUNTY	TOTAL SHEETS	SHEET NO.
FAP 116		RICHLAND	31	19
STA.	TO STA.			
FED. ROAD DIST. NO.	ILLINOIS	FED. AID PROJECT-		

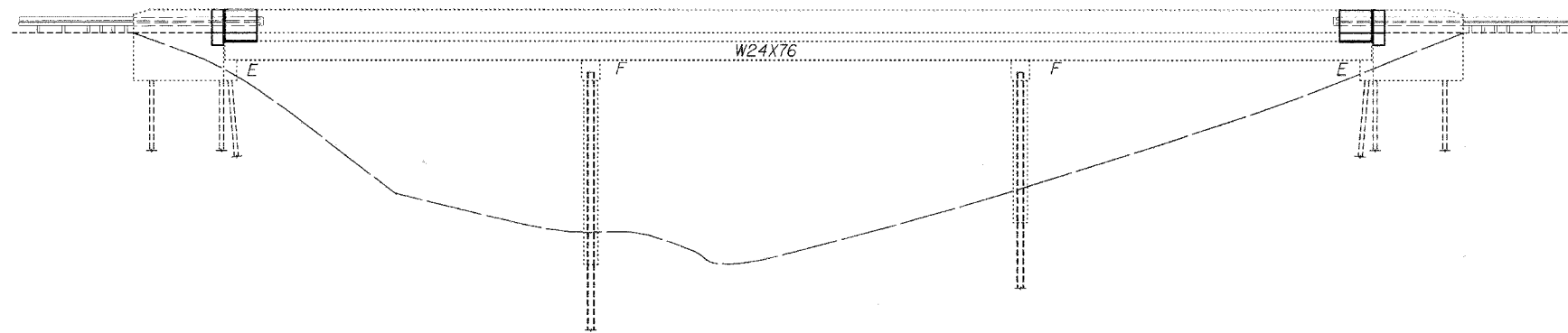
DWG. NO. 1 OF 6
CONTRACT NO. 74120

STRUCTURE INDEX OF SHEETS

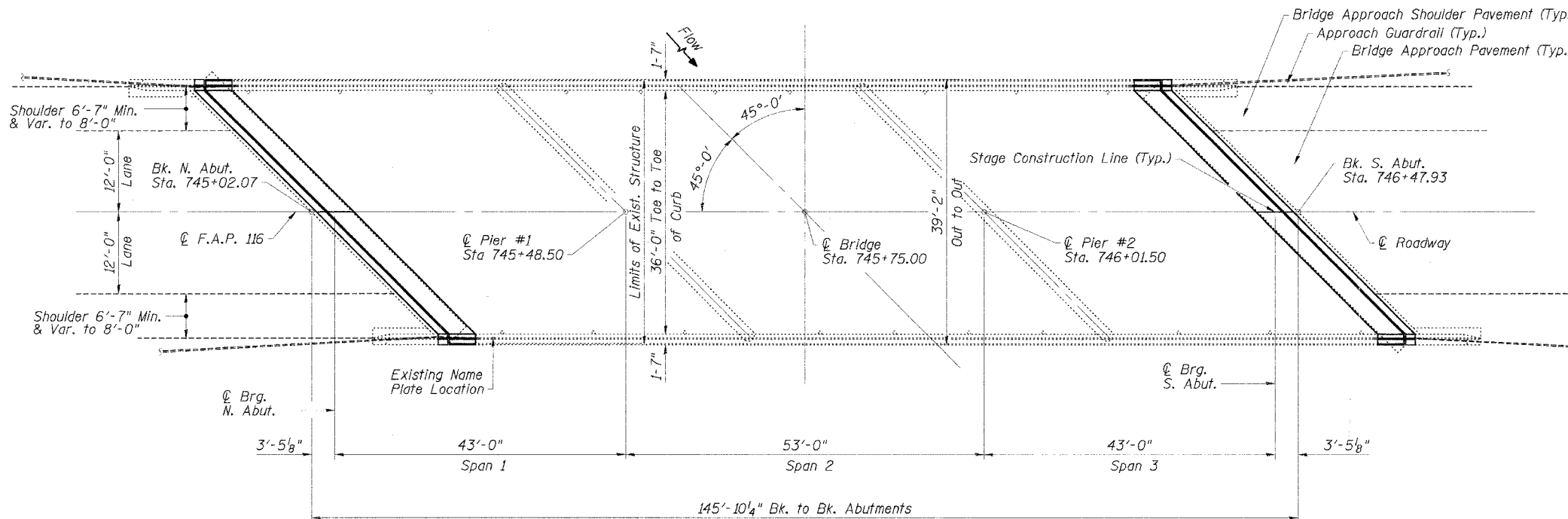
General Plan	Dwg. No. 1 of 6
Stage Construction	Dwg. No. 2 of 6
Expansion Joint Replacement Details	Dwg. No. 3 of 6
Expansion Joint Replacement Details	Dwg. No. 4 of 6
Continuous Seal Type Neoprene Expansion Joints	Dwg. No. 5 of 6
Bar Splicer Assembly Details	Dwg. No. 6 of 6

GENERAL NOTES

- Field welding of construction accessories will not be permitted to beams or girders.
- Plan dimensions and details relative to existing structure have been taken from existing plans and are subject to nominal construction variations. It shall be the Contractor's responsibility to verify such dimensions and details in the field and make necessary approved adjustments prior to construction or ordering of materials. Such variations shall not be cause for additional compensation for a change in the scope of the work, however, the Contractor will be paid for the quantity actually furnished at the unit price for the work.
- Prior to pouring the new concrete deck, all loose rust, loose mill scale, and other loose potentially detrimental foreign material shall be removed from the surfaces of the beams or girders in contact with concrete. The cost of this work will be included in the pay item covering removal of the existing concrete. All heavy rust and other tightly adhered potentially detrimental foreign matter shall also be removed from the surfaces of the beams or girders in contact with concrete. Tightly adhered paint may remain unless otherwise noted. This removal shall be accomplished by methods that will not damage the steel. The cost of this work will be paid for according to Article 109.04.
- All Construction joints shall be bonded.
- Existing reinforcement bars shall be cleaned, straightened, and incorporated into the new construction as noted. Any reinforcement bars that are damaged during concrete removal operations shall be replaced using an approved bar splicer or anchorage system (cost included in Concrete Removal).
- To facilitate the new construction, removal and installation of guardrail sections attached to the structure will be required. All existing embedded anchors that are within the concrete removal area shall be cleaned and incorporated into the new construction or new approved alternates shall be supplied and installed. Cost of this work shall be included in Concrete Superstructure.
- The existing structural steel coating contains lead. The Contractor should take appropriate precautions to deal with the presence of lead on this project.



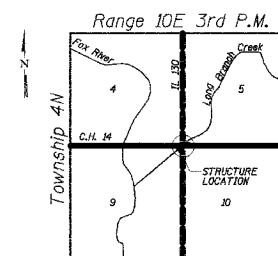
ELEVATION



PLAN

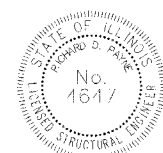
TOTAL BILL OF MATERIAL

ITEM	UNIT	SUPER	SUB	TOTAL
Concrete Removal	Cu. Yd.	11.3	6.5	17.8
Neoprene Expansion Joint 2"	Foot	106		106
Concrete Superstructure	Cu. Yd.	17.8		17.8
Protective Coat	Sq. Yd.	51		51
Reinforcement Bars, Epoxy Coated	Pound	1485	990	2475
Bar Splicers	Each	20	10	30



LOCATION SKETCH

GENERAL PLAN
IL 130 OVER LONG BRANCH CREEK
FAP RTE 116 (IL 130)
D-7 JOINT REPAIRS 2006-3
RICHLAND COUNTY
STATION 745+75.00
STRUCTURE NO. 080-0021



EXPIRES 11-30-07

Richard J. Payne
SIGNATURE
02/09/06
DATE

DESIGN SPECIFICATIONS
2002 AASHTO
DESIGN STRESSES

EXIST. CONSTRUCTION	NEW CONSTRUCTION
f'c = 3,500 psi	f'c = 3,500 psi
fy = 60,000 psi (Reinf.)	fy = 60,000 psi (Reinf.)
fy = 50,000 psi (M 222)	fy = 50,000 psi (M 270 Gr. 50)

ESCA
CONSULTANTS, INC.

DESIGNED BY:	MTD	11/05
DRAWN BY:	HAG	11/05
CHECKED BY:	MTD	11/05
APPROVED BY:	RDP	1/06